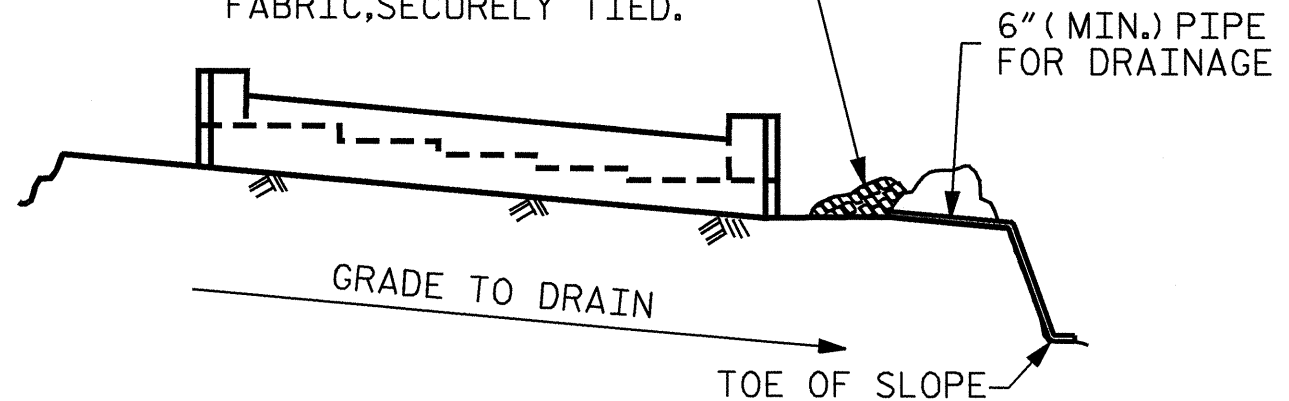


**SECTION A-A**

MINIMUM OF 3- ONE CUBIC FOOT BAGS OF #78M STONE. BAGS SHALL BE OF POROUS FABRIC, SECURELY TIED.



BAGGED STONE AND PIPE SHALL BE PLACED IMMEDIATELY AFTER COMPLETION OF END BENT EXCAVATION. PIPE MAY BE EITHER CONCRETE, CORRUGATED STEEL, CORRUGATED ALUMINUM ALLOY, OR CORRUGATED PLASTIC. PERFORATED PIPE WILL NOT BE ALLOWED.

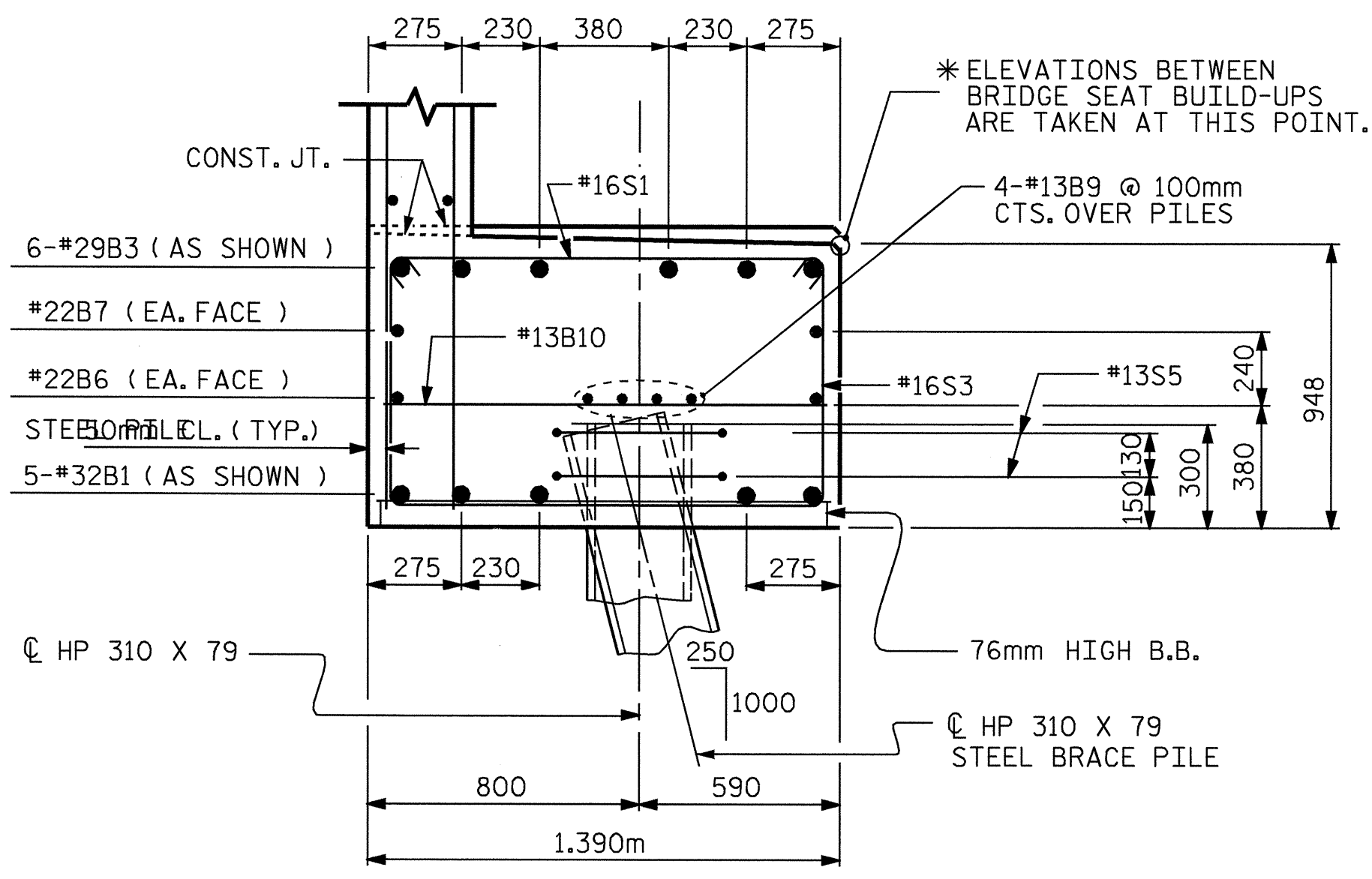
BAGGED STONE SHALL REMAIN IN PLACE UNTIL THE ENGINEER DIRECTS THAT IT BE REMOVED. THE CONTRACTOR SHALL REMOVE AND DISPOSE OF SILT ACCUMULATIONS AT BAGGED STONE WHEN SO DIRECTED BY THE ENGINEER. BAGS SHALL BE REMOVED AND REPLACED WHENEVER THE ENGINEER DETERMINES THAT THEY HAVE DETERIORATED AND LOST THEIR EFFECTIVENESS.

NO SEPARATE PAYMENT WILL BE MADE FOR THIS WORK AND THE ENTIRE COST OF THIS WORK SHALL BE INCLUDED IN THE UNIT CONTRACT PRICE BID FOR THE SEVERAL PAY ITEMS.

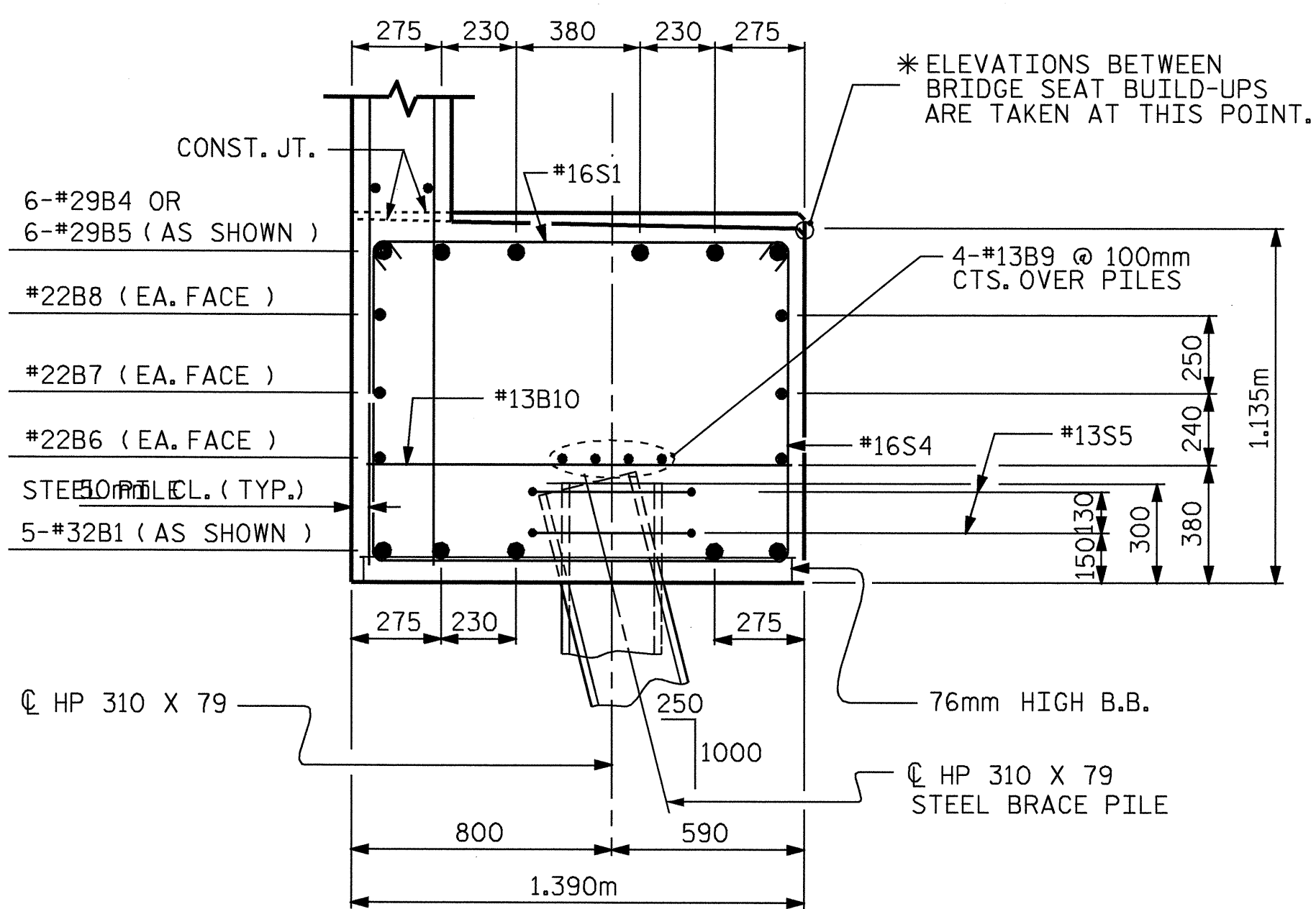
**TEMPORARY DRAINAGE AT END BENT**

DRAWN BY : E. G. ALLEN DATE : 3-14-01  
 CHECKED BY : H. A. LOCKLEAR DATE : 3-26-01

20-AUG-2004 16:10  
 W:\squad1\2206b\Final Plans\str2\2206b02eb1.dgn  
 Klayne

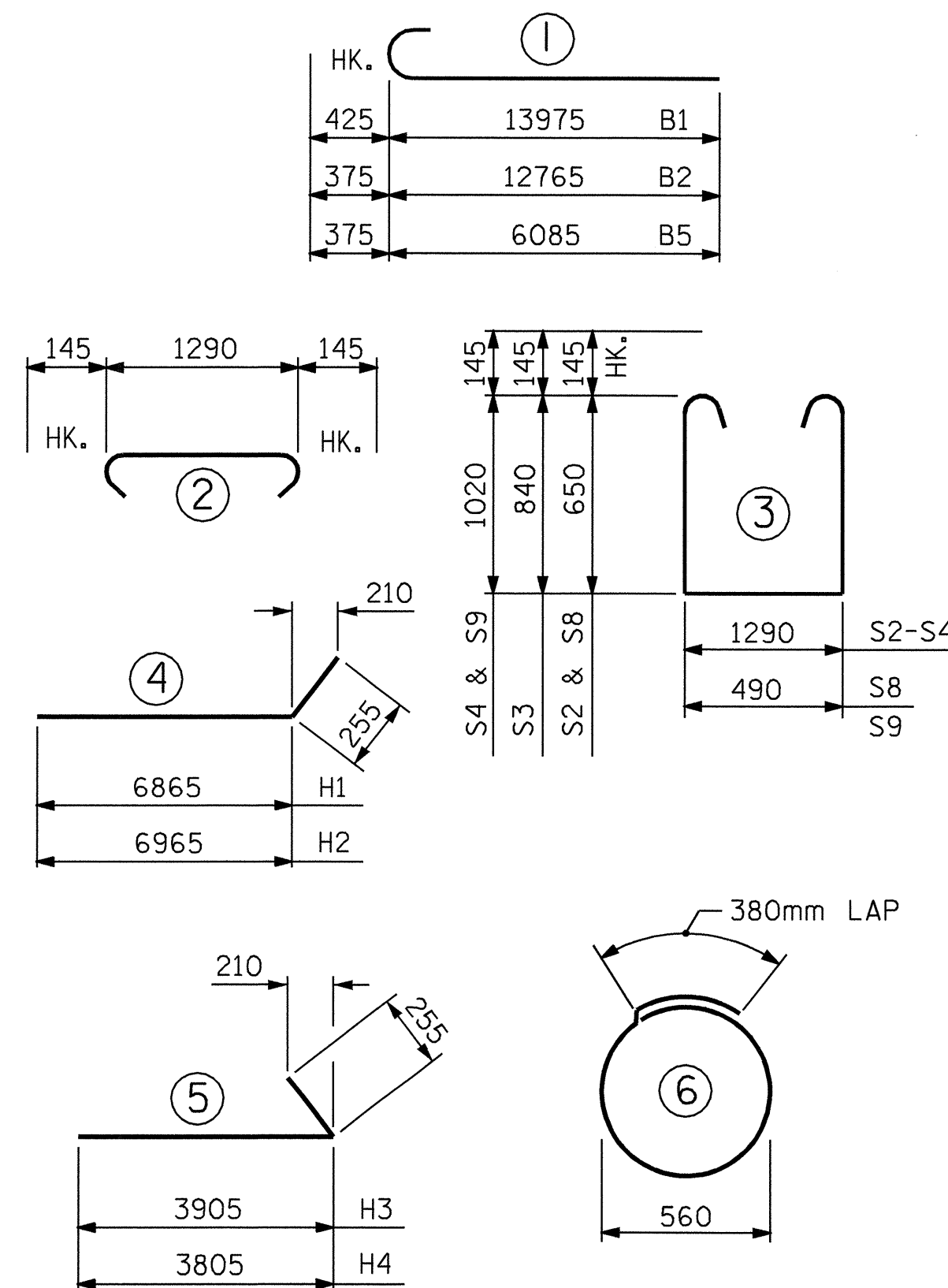


**SECTION B-B**



**SECTION C-C**

**BAR TYPES**



**BILL OF MATERIAL**

**END BENT 1**

BAR NO.	SIZE	TYPE	LENGTH	WEIGHT	
B1	10	32	1	14400	922
B2	6	29	1	13140	399
B3	6	29	STR	8700	264
B4	6	29	STR	7900	240
B5	6	29	1	6460	196
B6	4	22	STR	13580	165
B7	2	22	STR	14420	88
B8	2	22	STR	10200	62
B9	16	13	STR	6960	111
B10	20	13	STR	1280	25
B11	6	13	STR	1100	7
H1	12	16	4	7120	132
H2	12	16	4	7220	134
H3	11	16	5	4160	71
H4	11	16	5	4060	69
H5	2	16	STR	6340	20
K1	56	13	STR	6960	387
K2	4	13	STR	960	4
S1	120	16	2	1580	294
S2	43	16	3	2880	192
S3	30	16	3	3260	152
S4	47	16	3	3620	264
S5	18	13	6	2140	38
S6	6	19	7	1180	16
S7	2	19	8	2760	12
S8	3	16	3	2080	10
S9	3	16	3	2820	13
U1	69	13	9	2120	145
U2	4	13	9	2220	9
V1	146	16	STR	2580	585
V2	26	16	STR	3580	144
V3	14	16	STR	3640	79
V4	14	16	STR	3680	80
V5	32	16	STR	2920	145
REINFORCING STEEL				kg	5474

**CLASS A CONCRETE BREAKDOWN:**

POUR #1 (CAP & PART WINGS) = 38.9 CU. METERS  
 POUR #2 (BACKWALL & PART WINGS) = 25.0 CU. METERS  
 CLASS A CONCRETE TOTAL = 63.9 CU. METERS

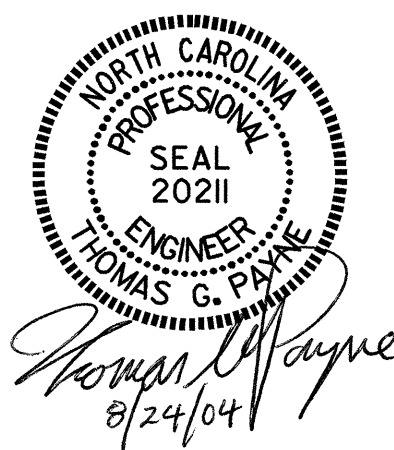
HP 310 X 79 STEEL PILES  
 NO. = 11 LIN. METERS = 39.0  
 STEEL PILE POINTS EACH 11  
 PILE EXCAVATION IN SOIL  
 LIN. METERS = 22.1  
 PILE EXCAVATION NOT IN SOIL  
 LIN. METERS = 11.0

PROJECT NO. R-2206B  
LINCOLN COUNTY  
 STATION: 123+38.105 -L-

SHEET 3 OF 3

STATE OF NORTH CAROLINA  
 DEPARTMENT OF TRANSPORTATION  
 RALEIGH

**SUBSTRUCTURE  
 END BENT 1  
 (RIGHT LANE)**



REVISIONS						SHEET NO.
NO.	BY:	DATE:	NO.	BY:	DATE:	S-72
1			3			TOTAL SHEETS 86
2			4			

STR. #2