

NOTES

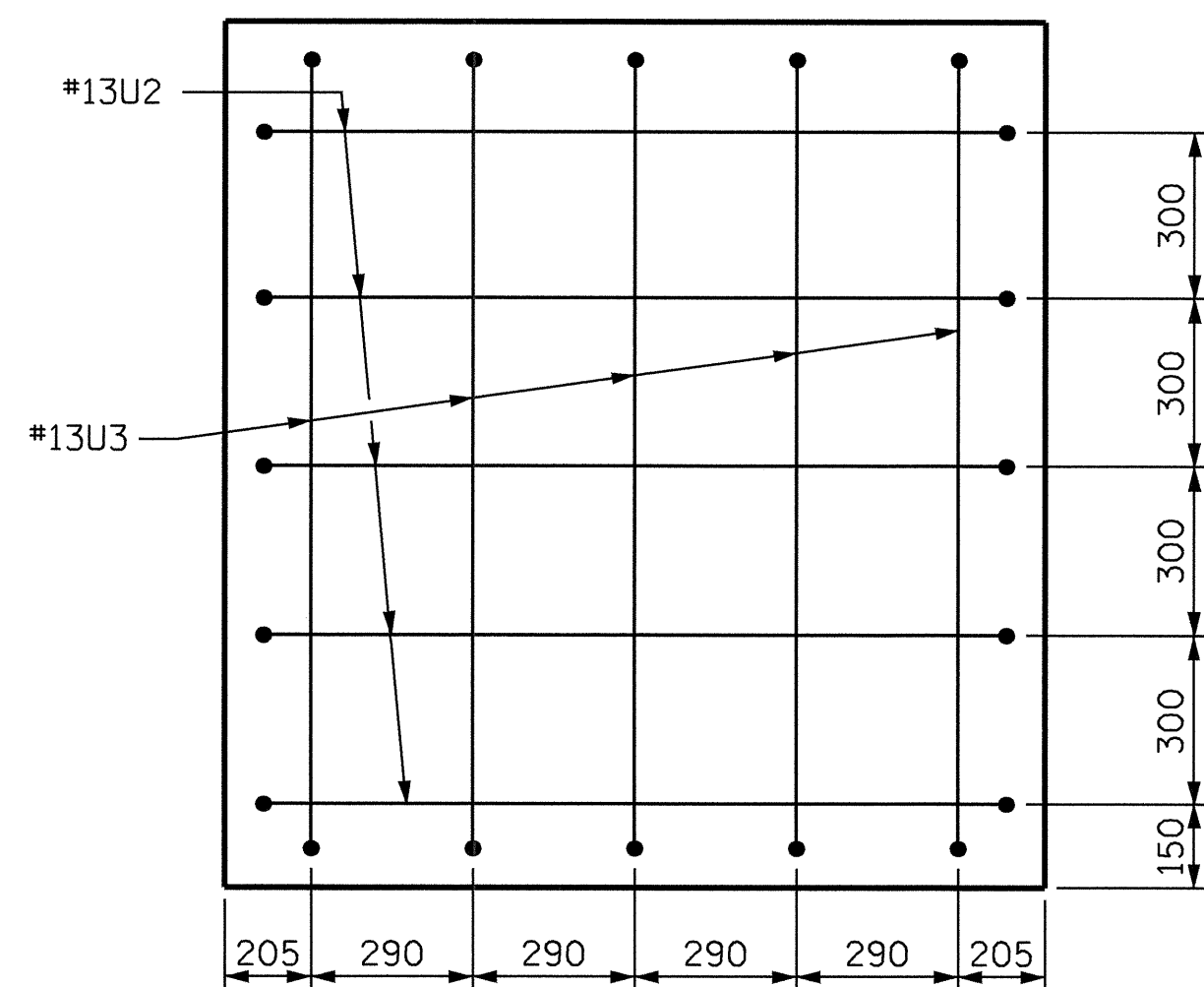
STIRRUPS IN CAP MAY BE SHIFTED AS NECESSARY TO CLEAR ANCHOR BOLTS.

HOOKS ON "V" BARS MAY BE TURNED AS NECESSARY FOR PLACING REINFORCING STEEL.

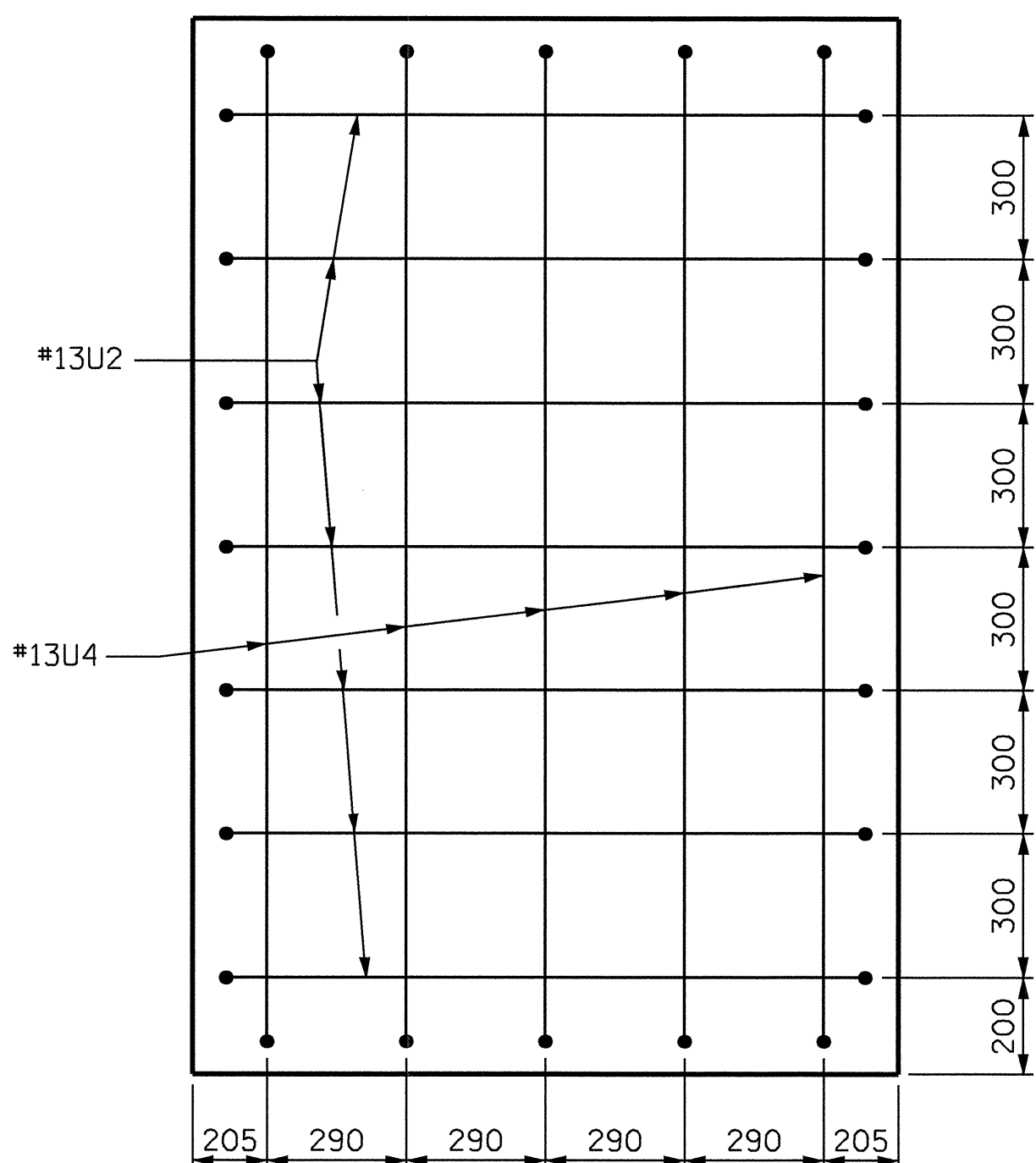
ALL STEEL IN THE DRILLED PIERS IS INCLUDED IN THE PAY ITEMS FOR REINFORCING STEEL AND SPIRAL COLUMN REINFORCING STEEL.

THE CONTRACTOR'S ATTENTION IS CALLED TO THE FACT THAT THE LONGITUDINAL REINFORCEMENT FOR DRILLED PIERS IS DETAILED WITH ONE METER OF EXTRA LENGTH.

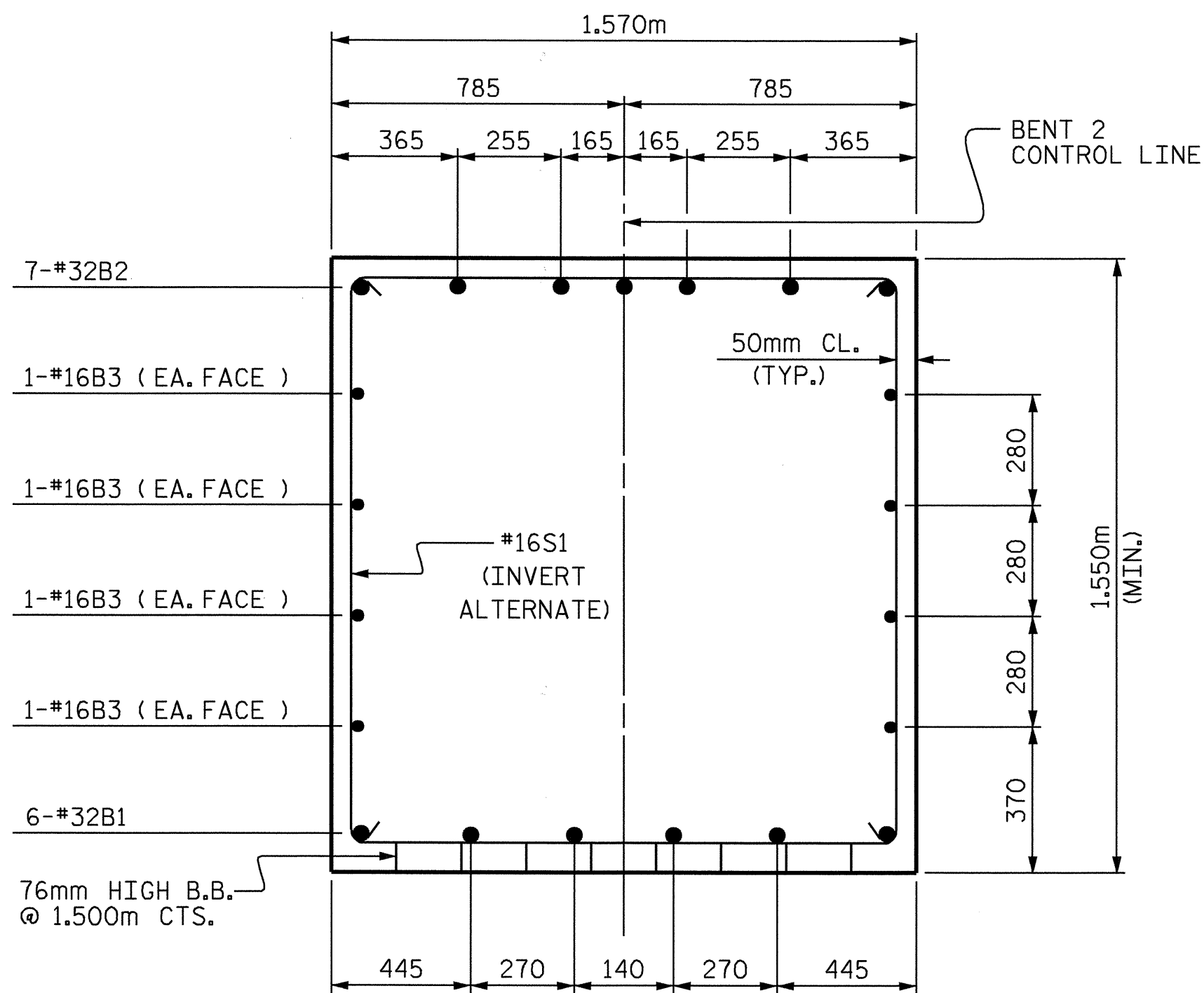
THE LOCATION OF THE CONSTRUCTION JOINT IN THE DRILLED PIER IS BASED ON AN APPROXIMATE GROUND LINE ELEVATION. IF THE CONSTRUCTION JOINT IS ABOVE THE ACTUAL GROUND LINE ELEVATION, THE CONTRACTOR SHALL PLACE THE CONSTRUCTION JOINT 300mm BELOW THE GROUND LINE.



SECTION X-X



SECTION Y-Y



SECTION THRU CAP

BAR TYPES

BILL OF MATERIAL

BENT 2					
BAR	NO.	SIZE	TYPE	LENGTH	WEIGHT
B1	12	#32	STR	10720	824
B2	7	#32	1	17300	776
B3	7	#32	1	7420	337
B4	24	#16	STR	6960	259
B5	2	#16	STR	3060	9
B6	2	#16	STR	7820	24
B7	6	#13	STR	6000	36
B8	7	#13	STR	1020	7
M1	104	#36	STR	11720	9638
S1	33	#16	2	4640	238
S2	20	#16	2	5480	170
U1	38	#13	3	2480	94
U2	12	#13	3	2040	24
U3	5	#13	3	2000	10
U4	5	#13	3	2620	13
V1	104	#36	1	11920	9802
REINFORCING STEEL					kg 22261

SPIRAL COLUMN REINFORCING STEEL					
SP	NO.	SIZE	TYPE	LENGTH	WEIGHT
SP1	4	**	4	274720	1705
SP2	4	***	5	579700	2305
SPIRAL COLUMN REINFORCING STEEL					kg 4010

DRILLED PIER CONCRETE BREAKDOWN		
POUR #	CU. METERS	WEIGHT
POUR #1	62.8	
DRILLED PIERS		

CLASS A CONCRETE BREAKDOWN		
POUR #	CU. METERS	WEIGHT
POUR #2	63.9	
COLUMNS		
POUR #3	53.5	
CAP		
CLASS A CONCRETE TOTAL	117.4	

1524mm Ø DRILLED PIERS IN SOIL		
POUR #	CU. METERS	WEIGHT
POUR #1	20.4	
DRILLED PIERS		
POUR #2	14.0	
DRILLED PIERS NOT IN SOIL		

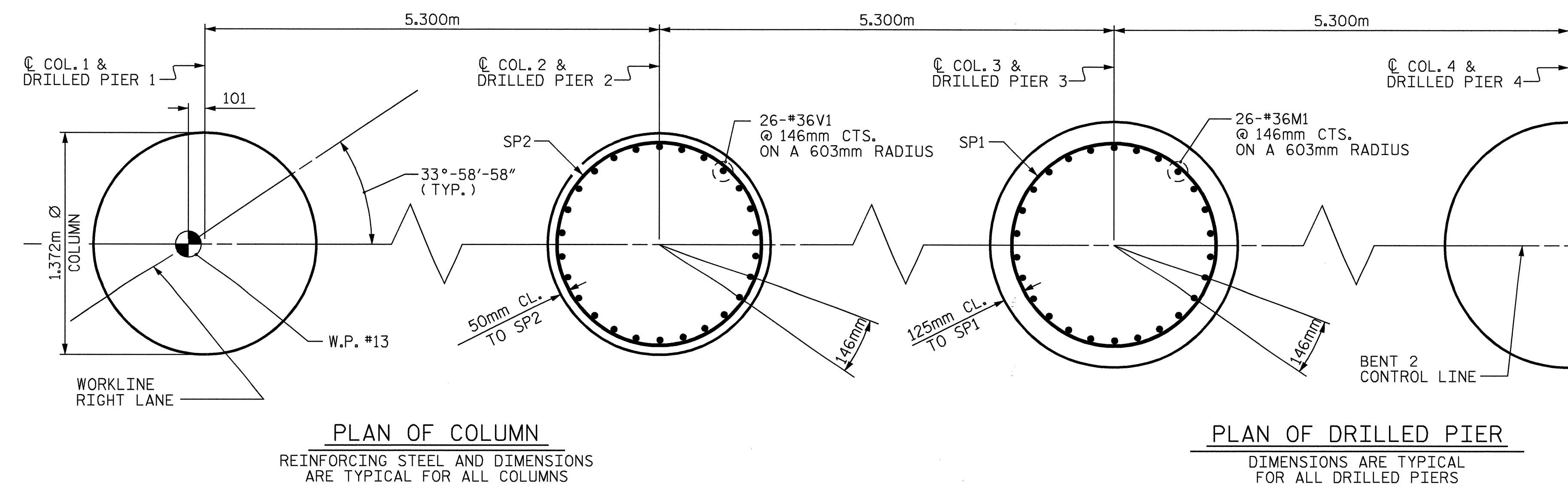
CSL TUBES		
POUR #	METERS	WEIGHT
POUR #1	151.20	
DRILLED PIERS		

CROSSHOLE SONIC LOGGING		
NO.	EA.	WEIGHT
POUR #1	1 EA.	
DRILLED PIERS		

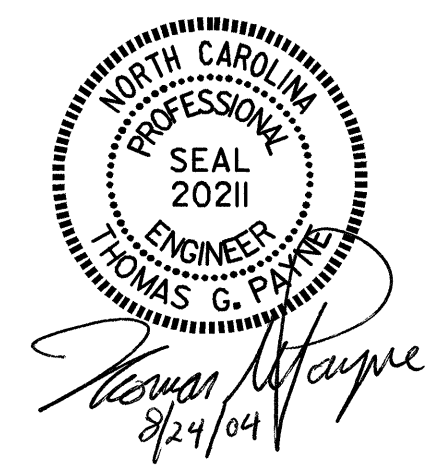
ALL BAR DIMENSIONS ARE OUT TO OUT.

** THE SP1 SPIRAL REINFORCING STEEL SHALL BE W31 OR D-31 COLD DRAWN WIRE OR #16 PLAIN OR DEFORMED BAR.

*** THE SP2 SPIRAL REINFORCING STEEL SHALL BE W20 OR D-20 COLD DRAWN WIRE OR #13 PLAIN OR DEFORMED BAR.



PLAN OF COLUMNS AND DRILLED PIERS



PROJECT NO. R-2206B
LINCOLN COUNTY
 STATION: 123+38.105 -L-

SHEET 2 OF 2

STATE OF NORTH CAROLINA
 DEPARTMENT OF TRANSPORTATION
 RALEIGH

SUBSTRUCTURE
 BENT 2
 (RIGHT LANE)

REVISIONS					SHEET NO.
NO.	BY:	DATE:	NO.	DATE:	S-76
1			3		TOTAL SHEETS
2			4		86

DRAWN BY : H.A. LOCKLEAR DATE : 3/30/01
 CHECKED BY : M.J. OSTRISHKO DATE : 4/20/01