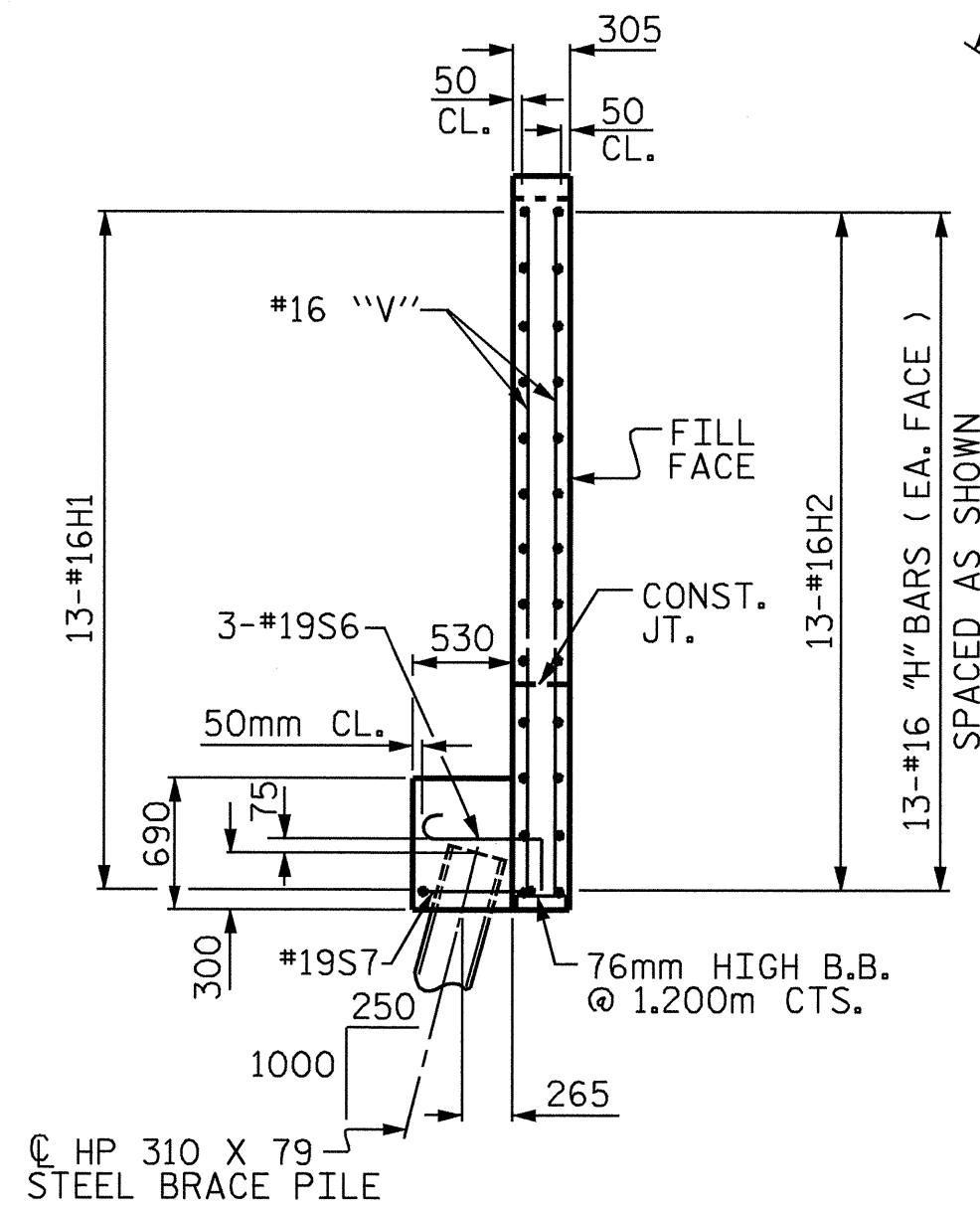
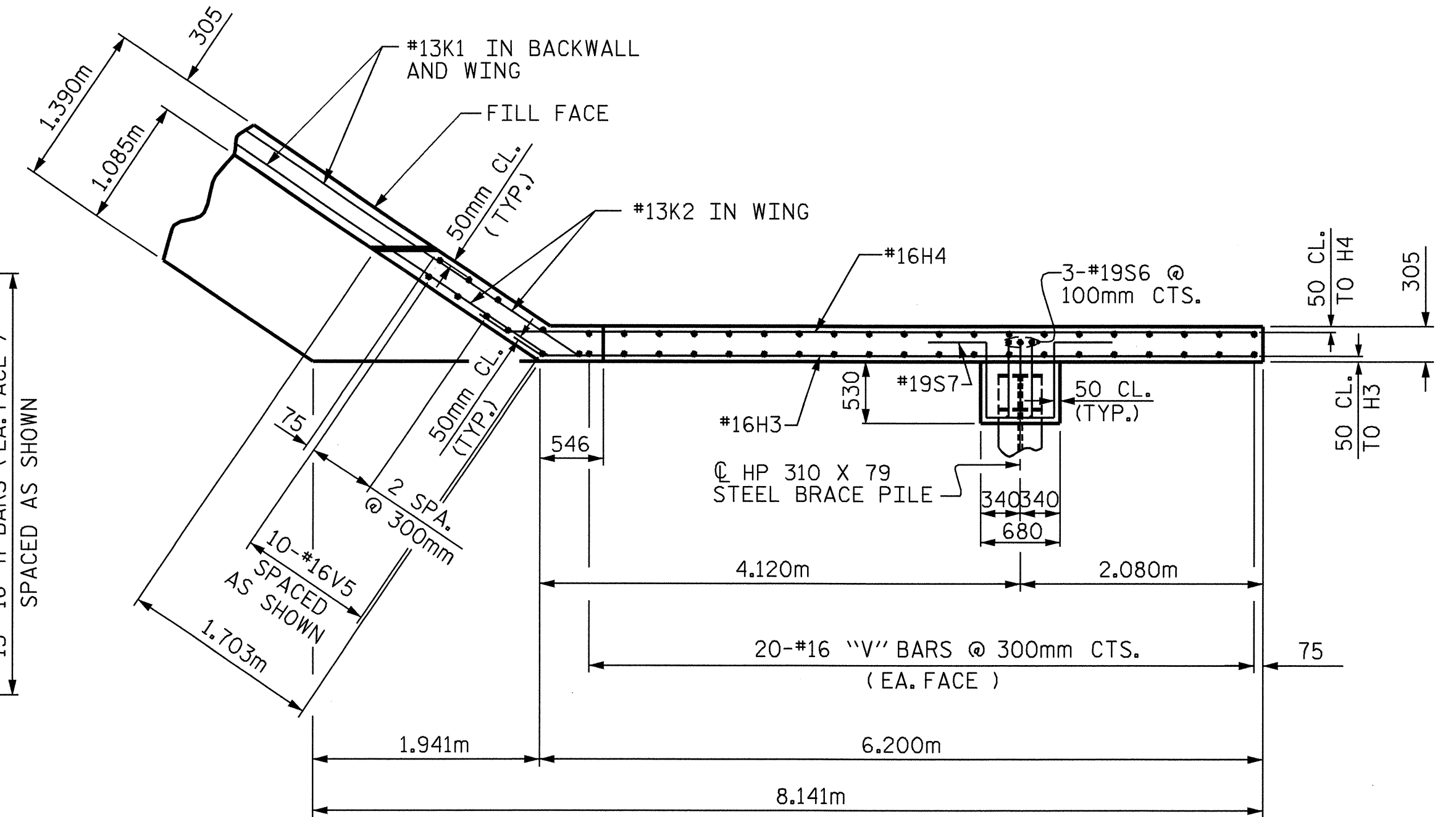


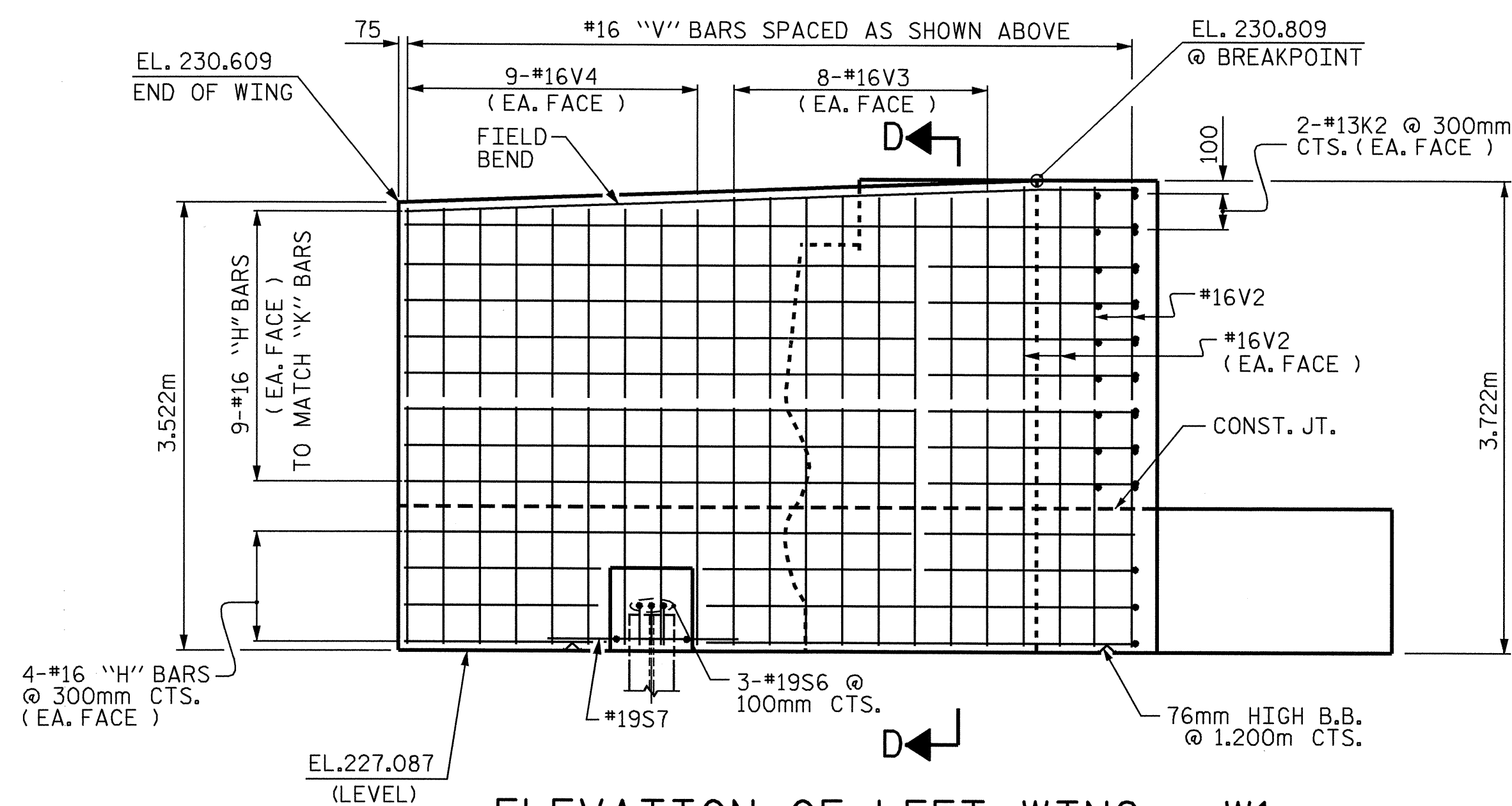
PLAN OF LEFT WING - W1



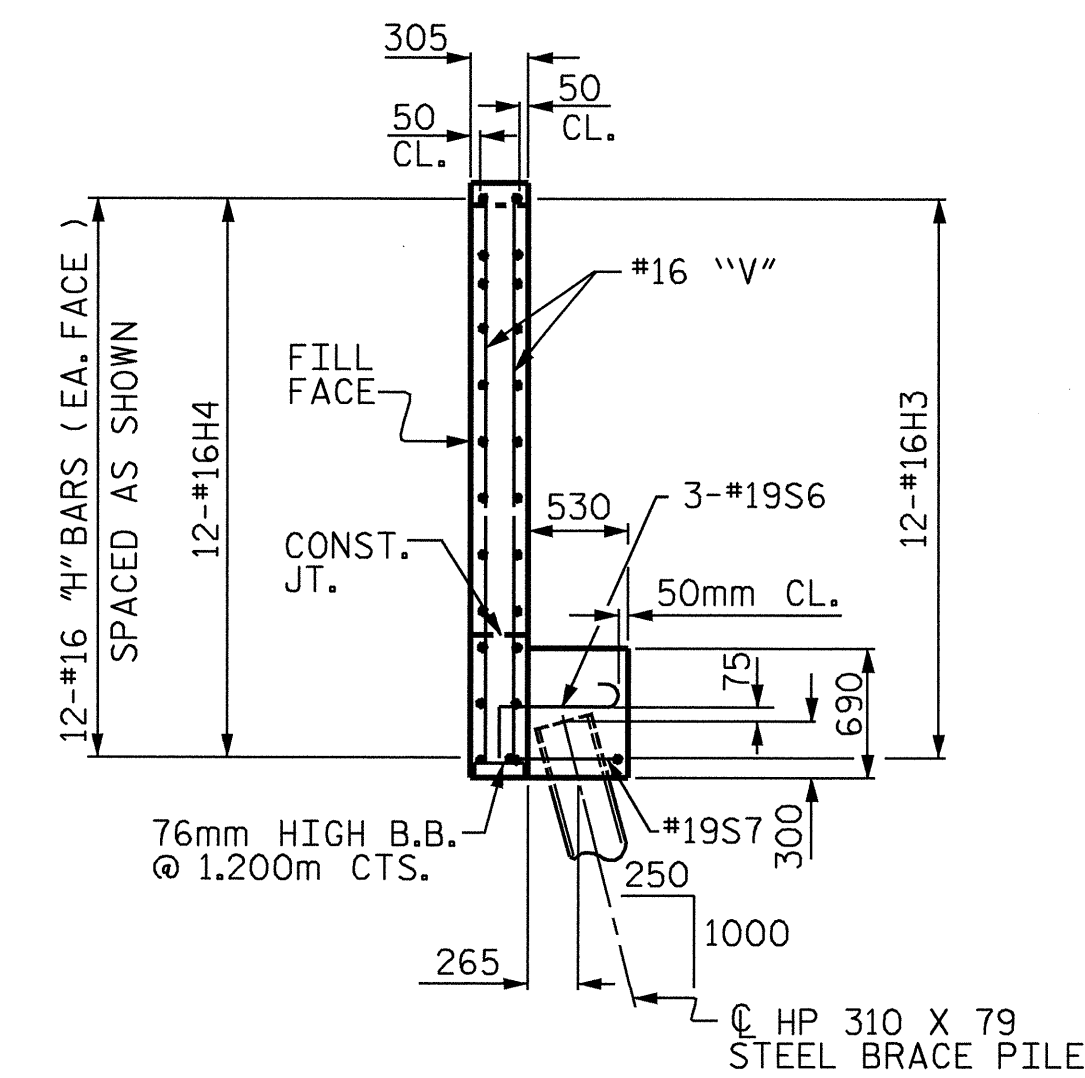
SECTION D-D



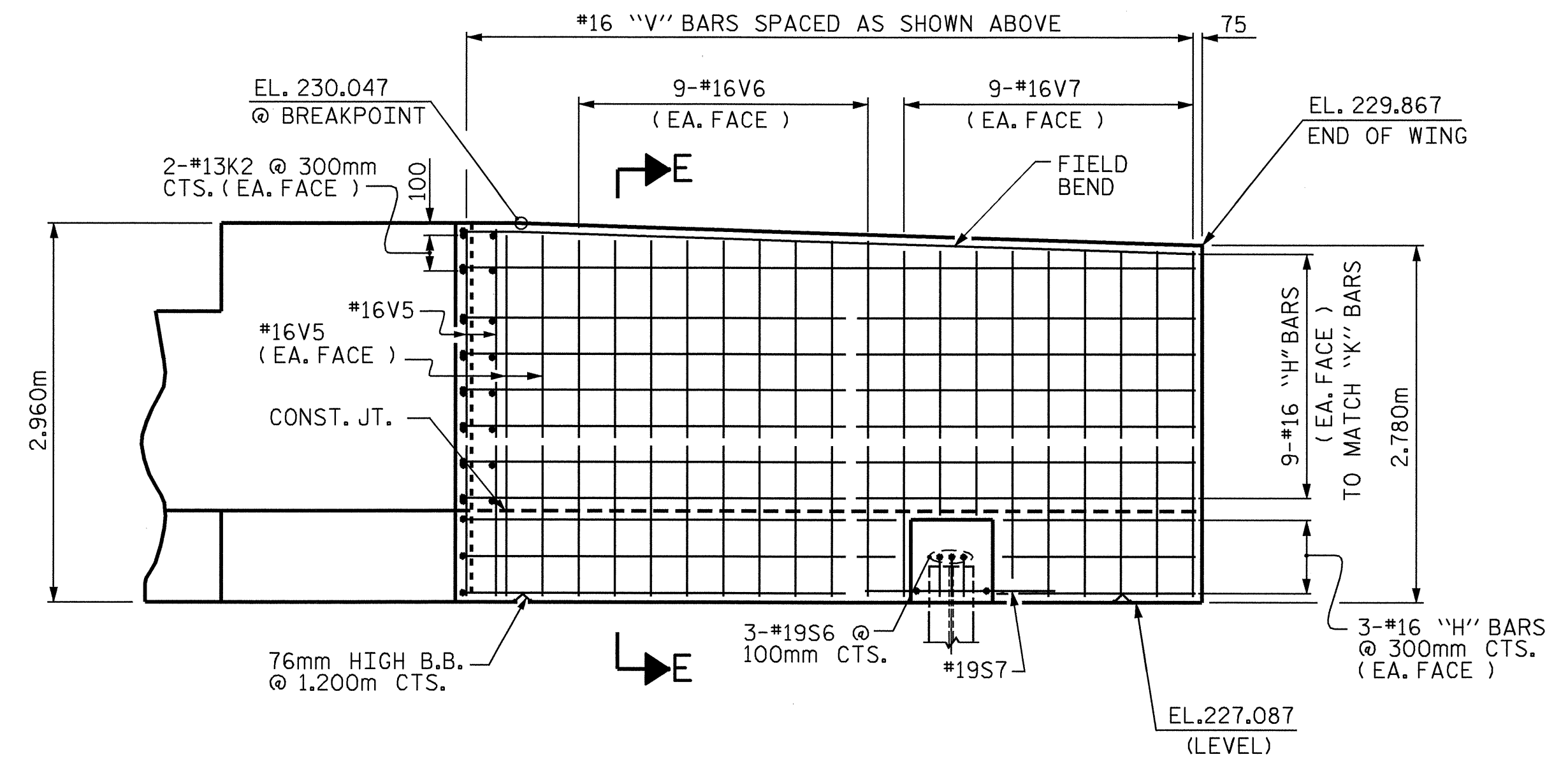
PLAN OF RIGHT WING - W2



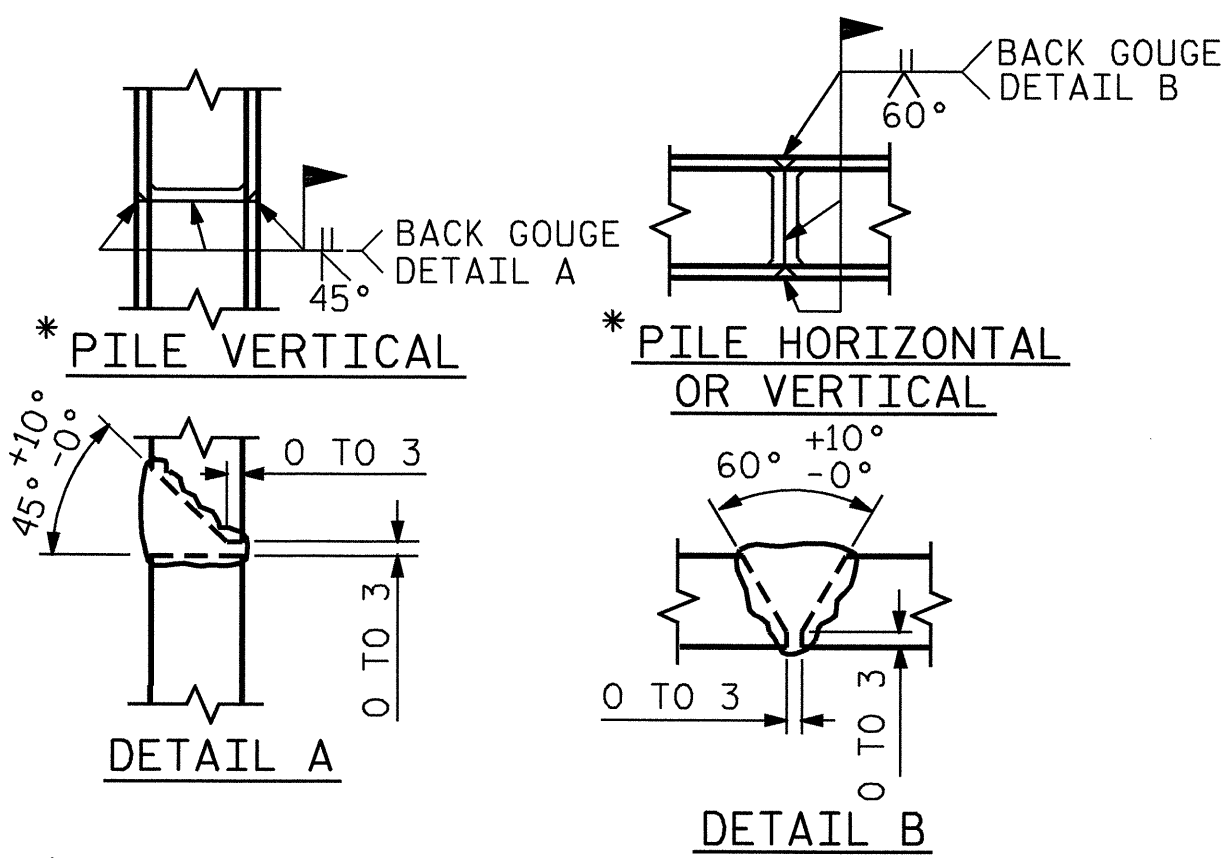
ELEVATION OF LEFT WING - W1



SECTION E-E



ELEVATION OF RIGHT WING - W2



* POSITION OF PILE DURING WELDING.

PILE SPLICE DETAILS

NOTES

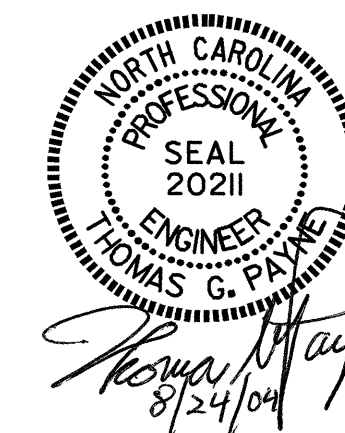
- STIRRUPS IN CAP MAY BE SHIFTED AS NECESSARY TO CLEAR ANCHOR BOLTS.
- FOR EPOXY PROTECTIVE COATING, SEE SPECIAL PROVISIONS.
- BACKWALL SHALL BE PLACED BEFORE APPLYING THE EPOXY PROTECTIVE COATING.
- THE TOP SURFACE AREAS OF THE END BENT CAPS SHALL BE CURED IN ACCORDANCE WITH THE STANDARD SPECIFICATIONS EXCEPT THAT THE MEMBRANE CURING COMPOUND METHOD SHALL NOT BE USED.
- THE TOP SURFACE OF THE CAP EXCEPT THE BRIDGE SEAT BUILDUPS SHALL BE SLOPED TRANSVERSELY FROM THE FILL FACE TO THE BACK FACE AT THE RATE OF 2%.
- EPOXY COAT THE END BENT CAP AFTER ADJUSTMENTS ARE MADE TO BEARINGS AND ANCHOR BOLTS ARE GROUTED.

PROJECT NO. R-2206B
LINCOLN COUNTY
STATION: 123+38.105 -L-

SHEET 2 OF 3

STATE OF NORTH CAROLINA
DEPARTMENT OF TRANSPORTATION
RALEIGH

SUBSTRUCTURE
END BENT 2
(RIGHT LANE)



REVISIONS						SHEET NO.	
NO.	BY	DATE	NO.	BY	DATE	S-80	
1			3			TOTAL SHEETS	
2			4			86	

DRAWN BY: E. G. ALLEN DATE: 3-21-01
CHECKED BY: H. L. LOCKLEAR DATE: 3-26-01

20-AUG-2004 16:10
W:\squad1\2206b\Final Plans\str2\2206b02eb2.dgn
klayne

STR: #2