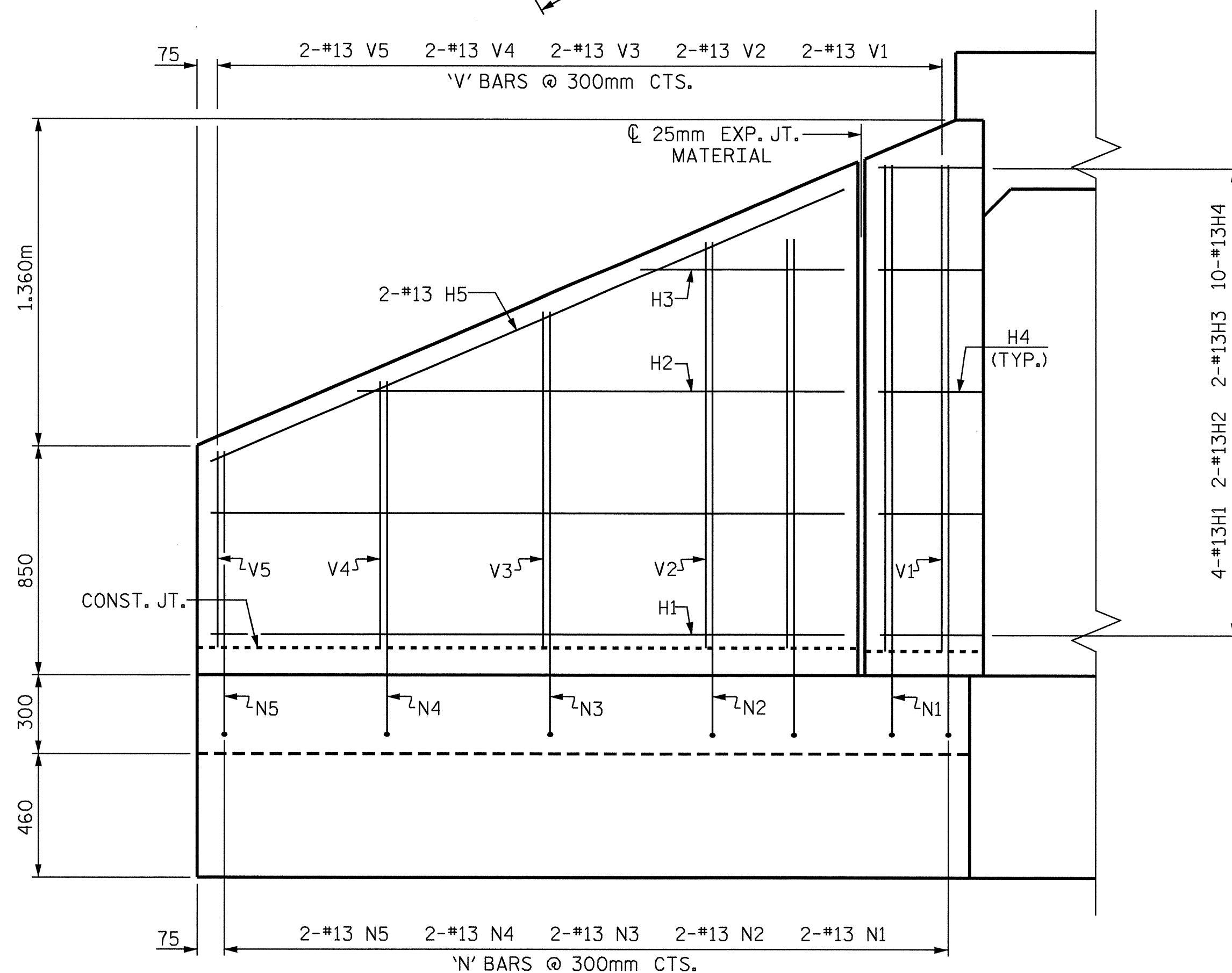
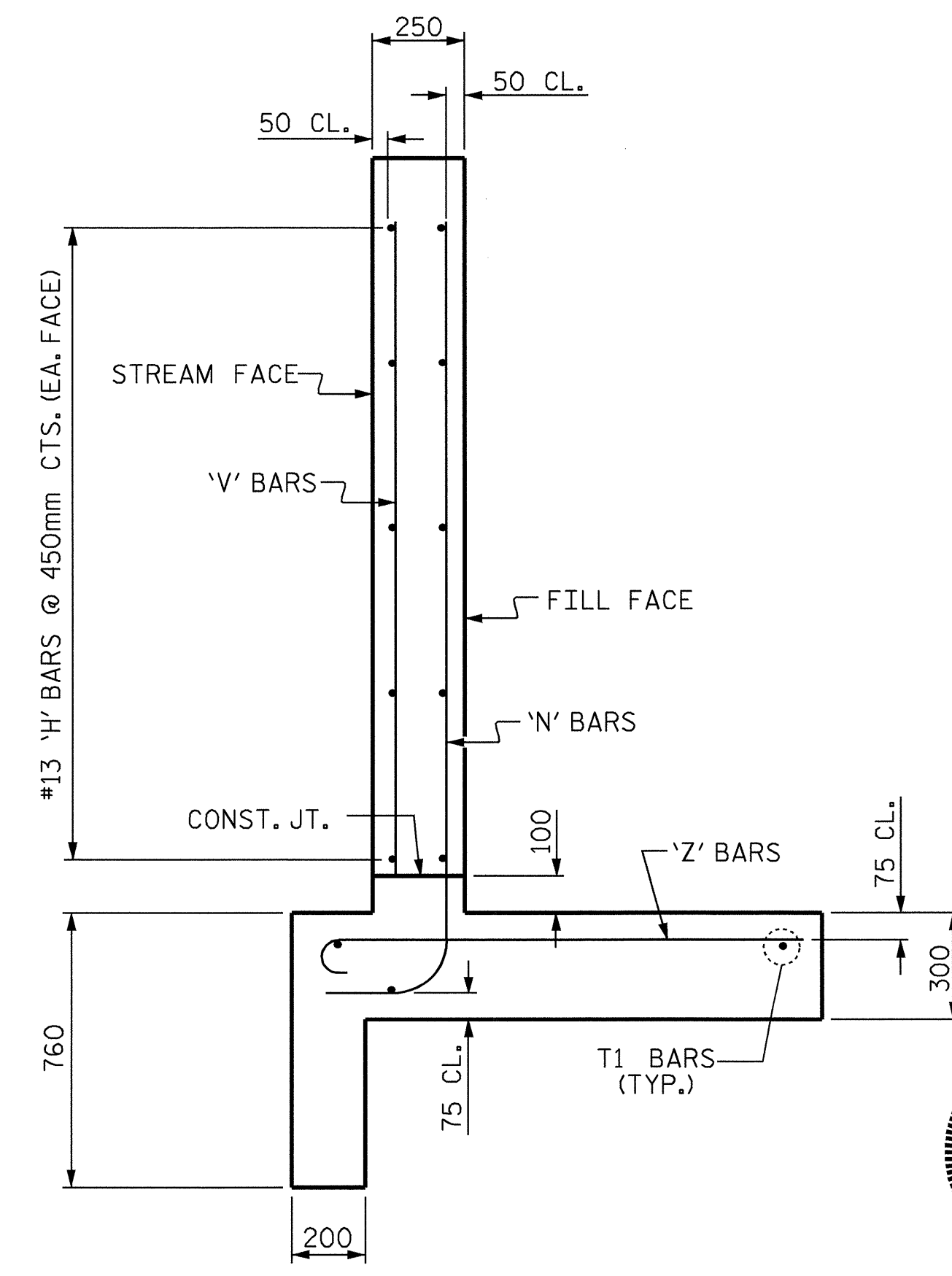


PLAN



ELEVATION

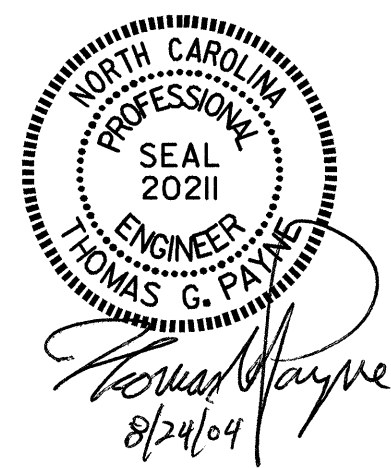
BAR TYPES		BILL OF MATERIAL					
ALL BAR DIMENSIONS ARE OUT TO OUT.		BAR NO.	SIZE	TYPE	LENGTH	WEIGHT	
①		H1	8	13	STR	2340	19
		H2	4	13	STR	1800	7
		H3	4	13	STR	800	3
		H4	20	13	1	980	19
		H5	4	13	STR	2540	10
		N1	4	13	2	2420	10
		N2	4	13	2	2140	9
		N3	4	13	2	1880	7
		N4	4	13	2	1620	6
		N5	4	13	2	1340	5
		T1	6	16	STR	2900	27
		V1	4	13	STR	1800	7
		V2	4	13	STR	1520	6
		V3	4	13	STR	1260	5
		V4	4	13	STR	1000	4
		V5	4	13	STR	720	3
		Z1	4	13	3	1420	6
		Z2	6	13	3	1280	8
		Z3	4	13	3	1160	5
		Z4	4	13	3	1020	4
		Z5	4	13	3	900	4
REINFORCING STEEL IN 2 WINGS					174	kg	
CLASS A CONCRETE							
2 WINGS					4.8	m <sup>3</sup>	
1 HEADWALL					0.5	m <sup>3</sup>	
1 END CURTAIN WALL					.6	m <sup>3</sup>	
TOTAL					5.9	m <sup>3</sup>	



TYPICAL WING SECTION

PROJECT NO. R-2206B  
LINCOLN COUNTY  
 STATION: 158+95.000 -L-

SHEET 6 OF 6  
 STATE OF NORTH CAROLINA  
 DEPARTMENT OF TRANSPORTATION  
 RALEIGH  
**STANDARD WINGS FOR CONCRETE BOX CULVERT**  
 H = 1.800m SLOPE = 2 : 1  
 90° SKEW



ASSEMBLED BY : D.B. MOORE DATE : 3/22/01  
 CHECKED BY : M.J. OSTRISHKO DATE : 4/03/01  
 DRAWN BY : KJA 06/97  
 CHECKED BY : VAP 06/97

REVISIONS				SHEET NO.
NO.	BY:	DATE:	NO.	DATE:
1			3	
2			4	

TOTAL SHEETS: 15