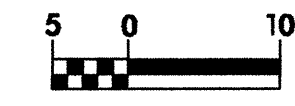
	PROJECT REFERENCE NO.	SHEET NO.
	R-2206B	EC-36/CONST. 7
	R/W SHEET NO.	ROADWAY DESIGN ENGINEER
		HYDRAULICS ENGINEER
CONST. REV.		
R/W REV.		

- NOTES**
- FOR PROFILE OF: SEE SHEET NO: 34, 35
 - FOR CROSS SECTIONS OF: SEE SHEET NO: X-16 THRU X-22

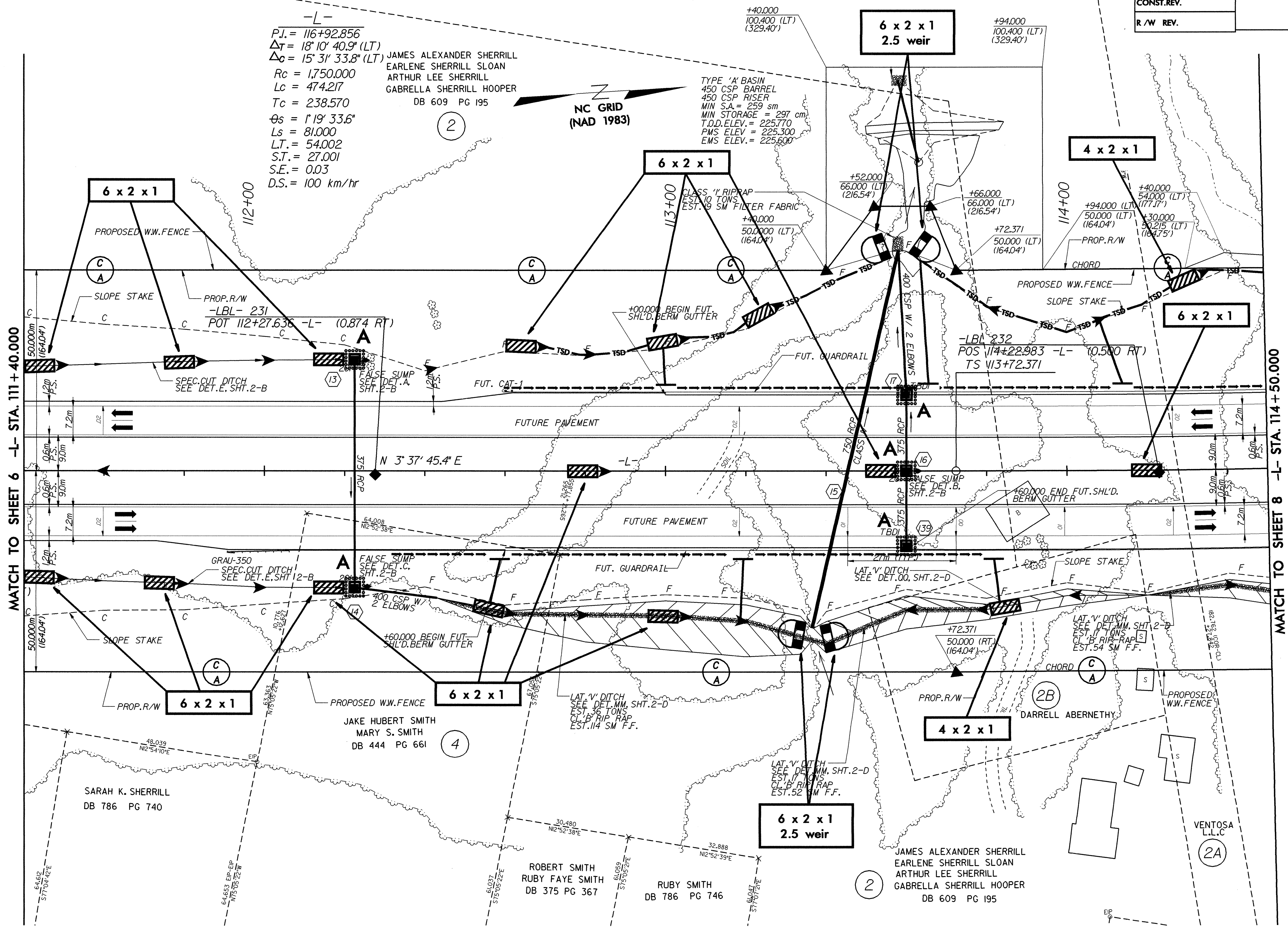
(2A)
VENTOSA L.L.C

-L-
 $P.I. = 116+92.856$
 $\Delta T = 18' 10" 40.9" (LT)$
 $\Delta C = 15' 31" 33.8" (LT)$
 $R_c = 1,750,000$
 $L_c = 474.217$
 $T_c = 238.570$
 $\theta_s = 1' 19" 33.6"$
 $L_s = 81,000$
 $L.T. = 54,002$
 $S.T. = 27,001$
 $S.E. = 0.03$
 $D.S. = 100 \text{ km/hr}$

JAMES ALEXANDER SHERRILL
 EARLENE SHERRILL SLOAN
 ARTHUR LEE SHERRILL
 GABRELLA SHERRILL HOOPER
 DB 609 PG 195

NC GRID
(NAD 1983)

TYPE 'A' BASIN
 450 CSP BARREL
 450 CSP RISER
 MIN S.A. = 259 sm
 MIN STORAGE = 297 cm
 T.O.D. ELEV. = 225.770
 PMS ELEV. = 225.300
 EMS ELEV. = 225.600



MATCH TO SHEET 6 -L- STA. 111 + 40.000

MATCH TO SHEET 8 -L- STA. 114 + 50.000

SARAH K. SHERRILL
DB 786 PG 740

JAKE HUBERT SMITH
MARY S. SMITH
DB 444 PG 661

ROBERT SMITH
RUBY FAYE SMITH
DB 375 PG 367

RUBY SMITH
DB 786 PG 746

JAMES ALEXANDER SHERRILL
EARLENE SHERRILL SLOAN
ARTHUR LEE SHERRILL
GABRELLA SHERRILL HOOPER
DB 609 PG 195

VENTOSA L.L.C
(2A)