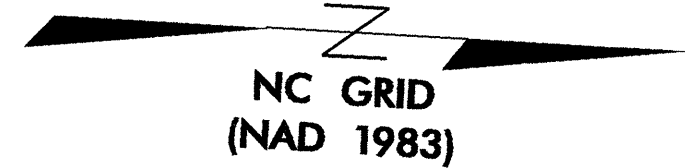
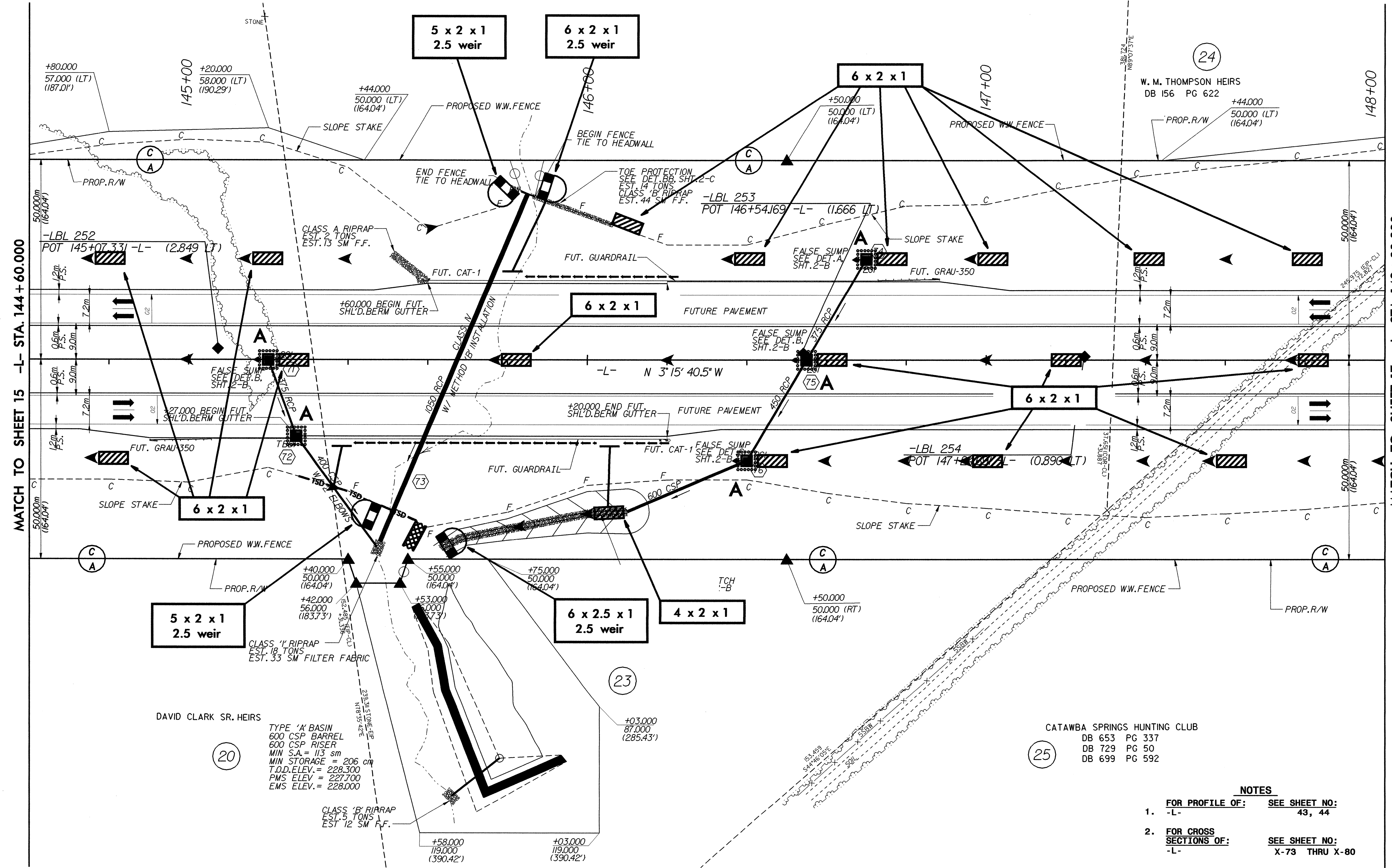
	PROJECT REFERENCE NO.	SHEET NO.
	R-22068	EC-45/CONST. 16
ROADWAY DESIGN ENGINEER		HYDRAULICS ENGINEER
CONST. REV.		R/W REV.

(23)
 HAYWOOD W. THOMPSON
 ROSA C. THOMPSON
 DB 344 PG 331



(24)
 W. M. THOMPSON HEIRS
 DB 156 PG 622



MATCH TO SHEET 15 -L- STA. 144 + 60.000

MATCH TO SHEET 17 -L- STA. 148 + 00.000

DAVID CLARK SR. HEIRS
 TYPE 'A' BASIN
 600 CSP BARREL
 600 CSP RISER
 MIN S.A. = 113 sm
 MIN STORAGE = 206 cfm
 T.O.D. ELEV. = 228.300
 PMS ELEV. = 227.700
 EMS ELEV. = 228.000

CATAWBA SPRINGS HUNTING CLUB
 DB 653 PG 337
 DB 729 PG 50
 DB 699 PG 592

- NOTES**
- FOR PROFILE OF: SEE SHEET NO:
 -L- 43, 44
 - FOR CROSS SECTIONS OF: SEE SHEET NO:
 -L- X-73 THRU X-80