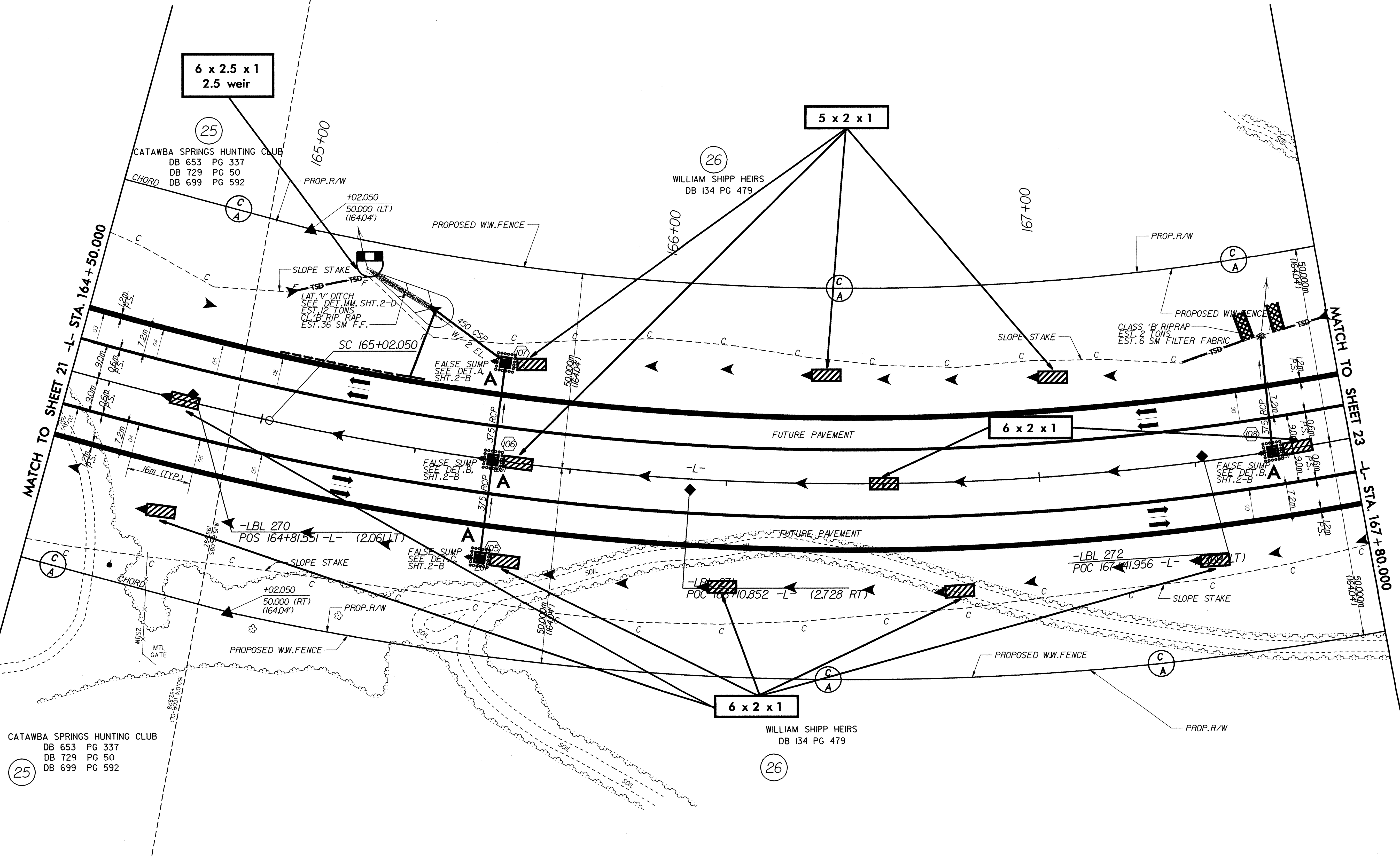
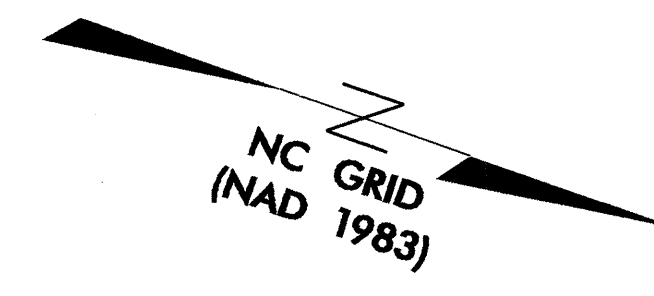


METRIC

CONST. REV.
R/W REV.

PROJECT REFERENCE NO. R-2206B	SHEET NO. EC-51/CONST.22
R/W SHEET NO.	
ROADWAY DESIGN ENGINEER	HYDRAULICS ENGINEER



CATAWBA SPRINGS HUNTING CLUB
DB 653 PG 337
DB 729 PG 50
DB 699 PG 592

WILLIAM SHIPP HEIRS
DB 134 PG 479