

METRIC

5 0 10

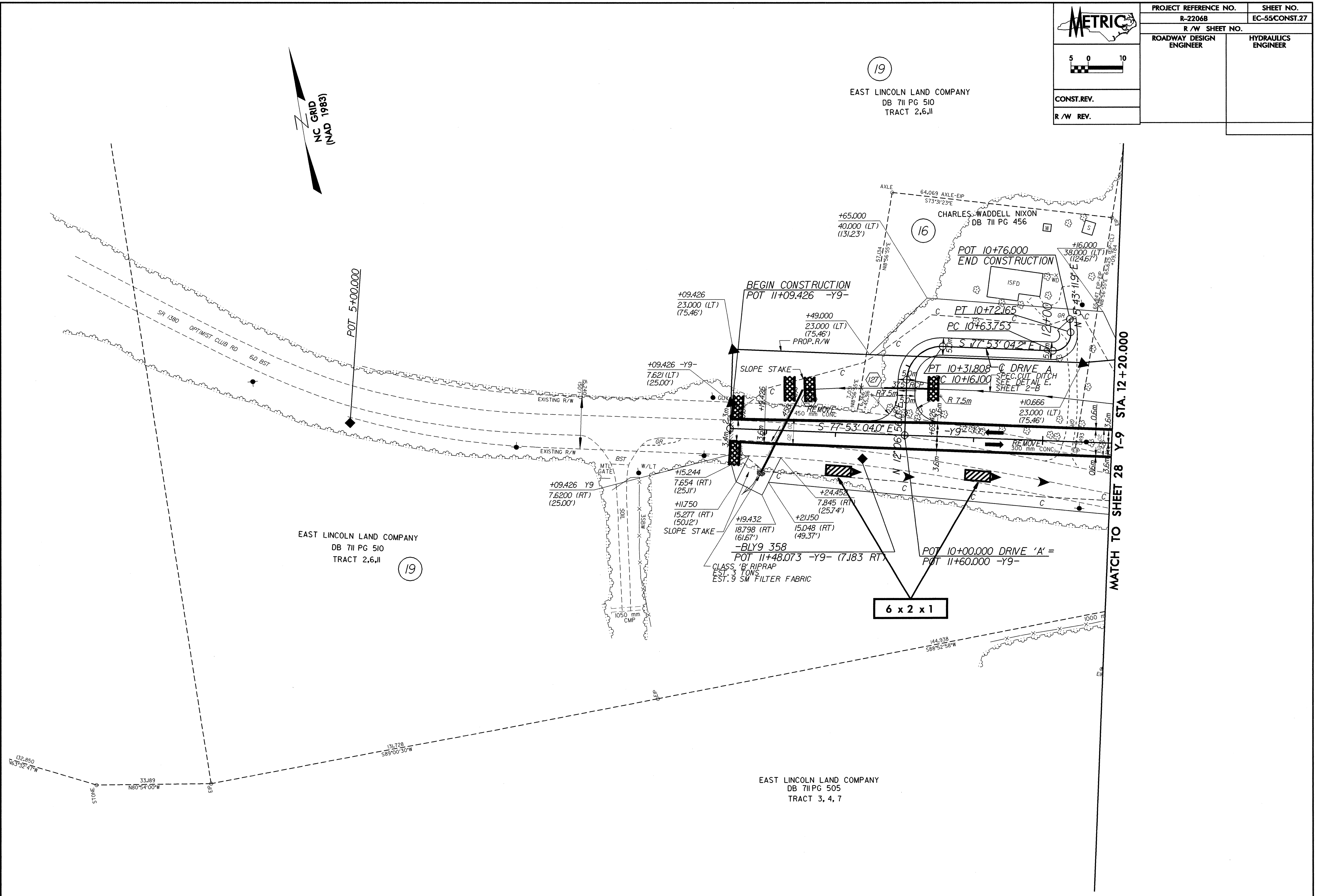
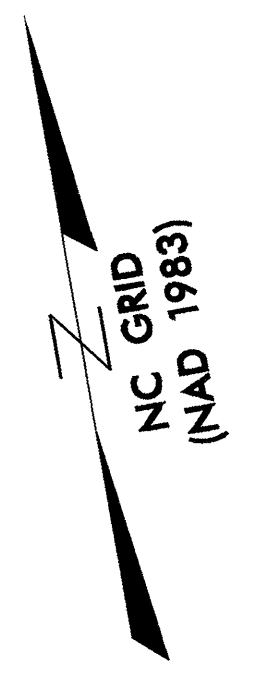
CONST. REV.

R/W REV.

PROJECT REFERENCE NO. R-2206B	SHEET NO. EC-55/CONST.27
R/W SHEET NO.	
ROADWAY DESIGN ENGINEER	HYDRAULICS ENGINEER

19

EAST LINCOLN LAND COMPANY
DB 711 PG 510
TRACT 2,6,11



EAST LINCOLN LAND COMPANY
DB 711 PG 510
TRACT 2,6,11

19

EAST LINCOLN LAND COMPANY
DB 711 PG 505
TRACT 3, 4, 7

MATCH TO SHEET 28 Y-9 STA. 12 + 20.000

6 x 2 x 1

132.850
N63°32'47"W

STONE

33.189
N80°54'00"W

EIP

131.728
S89°00'30"W

AXLE 64.069 AXLE-EIP
S73°31'23"E

CHARLES WADDELL NIXON
DB 711 PG 456

POT 10+76.000
END CONSTRUCTION

PT 10+72.165
PC 10+63.755

S 77°53'04.2" E 124.00'

PT 10+31.808 - C DRIVE A
PC 10+16.100 SPEC. CUT DITCH
SEE DETAIL E.
SHEET 2-B

+10.666
23.000 (LT)
(75.46')

REMOVE
300 mm CONC.

POT 10+00.000 DRIVE 'A' =
POT 11+60.000 -Y9-

POT 11+48.073 -Y9- (7.183 RT.)
CLASS 'B' RIPRAP
EST. 3 TONS
EST. 9 SM FILTER FABRIC

+19.432
18.798 (RT)
(61.67')

+21.150
15.048 (RT)
(49.37')

+24.452
7.845 (RT)
(25.74')

+15.244
7.654 (RT)
(25.11')

+11.750
15.277 (RT)
(50.12')

+09.426 Y9
7.620 (RT)
(25.00')

+09.426 -Y9-
7.621 (LT)
(25.00')

+49.000
23.000 (LT)
(75.46')
PROP. R/W

+09.426
23.000 (LT)
(75.46')

+65.000
40.000 (LT)
(131.23')

1050 mm CMP

1000 mm

144.938
S88°52'58"W