

PHASE II

AREA II



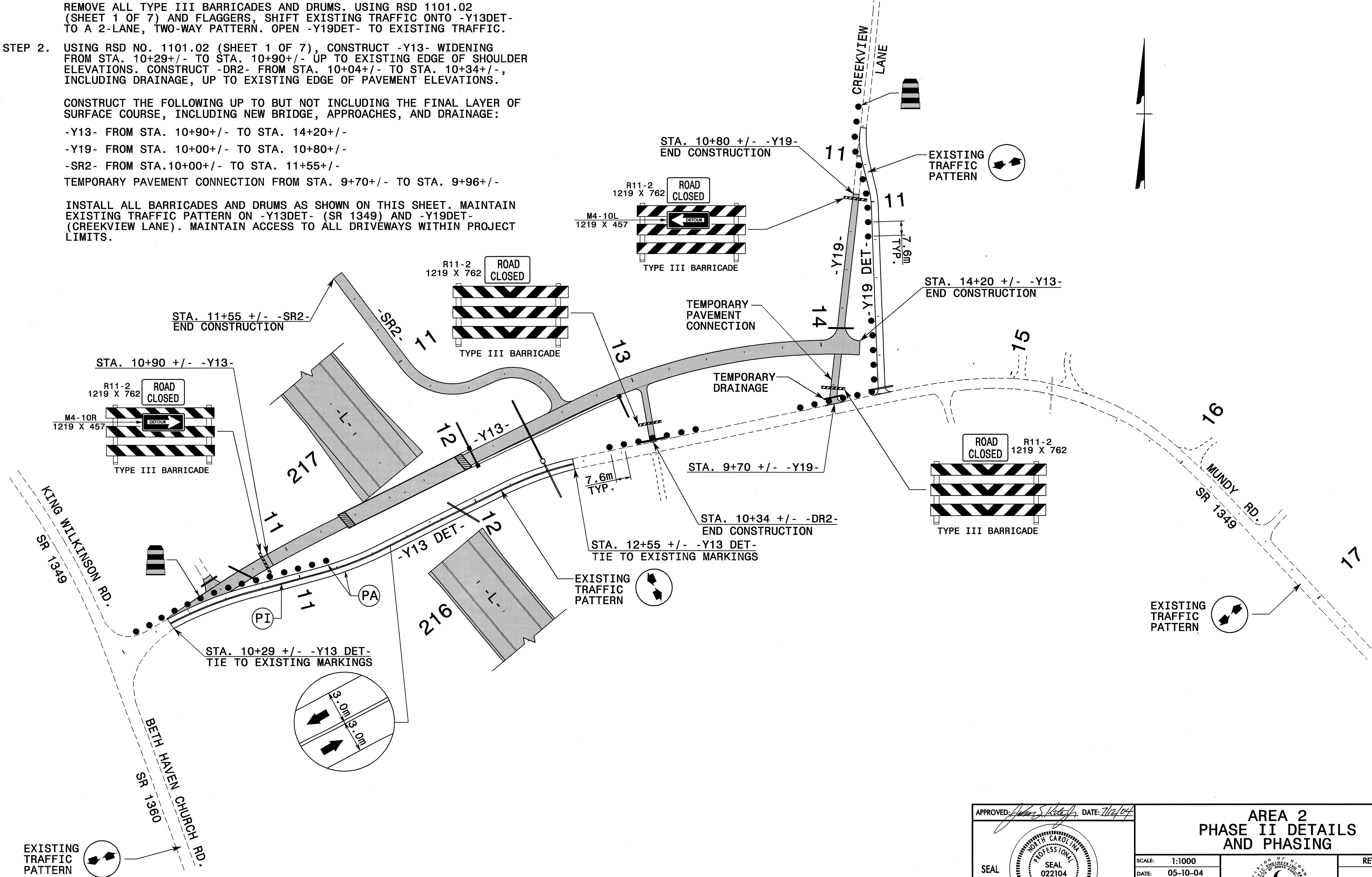
PROJ. REFERENCE NO.	SHEET NO.
R-2206C	TCP-9

- STEP 1. USING RSD 1101.02 (SHEET 1 OF 7), PLACE FINAL LAYER OF SURFACE COURSE AND TEMPORARY PAVEMENT MARKINGS ON -Y13DET- FROM STA. 10+29+/- TO STA. 12+55+/- . REFER TO RSD NOS. 1205.01 AND 1205.02 WHEN PLACING TEMPORARY PAVEMENT MARKINGS, SEE TCP-1 FOR TEMPORARY PAVEMENT MARKING SCHEDULE. PLACE FINAL LAYER SURFACE COURSE ON -Y19DET- FROM STA. 10+00+/- TO STA. 11+40+/- .
- REMOVE ALL TYPE III BARRICADES AND DRUMS. USING RSD 1101.02 (SHEET 1 OF 7) AND FLAGGERS, SHIFT EXISTING TRAFFIC ONTO -Y13DET- TO A 2-LANE, TWO-WAY PATTERN. OPEN -Y19DET- TO EXISTING TRAFFIC.
- STEP 2. USING RSD NO. 1101.02 (SHEET 1 OF 7), CONSTRUCT -Y13- WIDENING FROM STA. 10+29+/- TO STA. 10+90+/- UP TO EXISTING EDGE OF SHOULDER ELEVATIONS. CONSTRUCT -DR2- FROM STA. 10+04+/- TO STA. 10+34+/- , INCLUDING DRAINAGE, UP TO EXISTING EDGE OF PAVEMENT ELEVATIONS.

CONSTRUCT THE FOLLOWING UP TO BUT NOT INCLUDING THE FINAL LAYER OF SURFACE COURSE, INCLUDING NEW BRIDGE, APPROACHES, AND DRAINAGE:

- Y13- FROM STA. 10+90+/- TO STA. 14+20+/-
- Y19- FROM STA. 10+00+/- TO STA. 10+80+/-
- SR2- FROM STA. 10+00+/- TO STA. 11+55+/-
- TEMPORARY PAVEMENT CONNECTION FROM STA. 9+70+/- TO STA. 9+96+/-

INSTALL ALL BARRICADES AND DRUMS AS SHOWN ON THIS SHEET. MAINTAIN EXISTING TRAFFIC PATTERN ON -Y13DET- (SR 1349) AND -Y19DET- (CREEKVIEW LANE). MAINTAIN ACCESS TO ALL DRIVEWAYS WITHIN PROJECT LIMITS.



09-JUL-2004 14:25
 J:\TCP\AREA2\2206C.TG\AREA2_tcp09.dgn
 SCOOTIS AT 1E1206428

APPROVED: <i>[Signature]</i> DATE: 7/12/04 	AREA 2 PHASE II DETAILS AND PHASING							
	SCALE: 1:1000 DATE: 05-10-04 DWG. BY: SBC DESIGN BY: SBC REVIEWED BY: CLM	REVISIONS <table border="1"> <tr><td> </td><td> </td></tr> <tr><td> </td><td> </td></tr> <tr><td> </td><td> </td></tr> </table>						