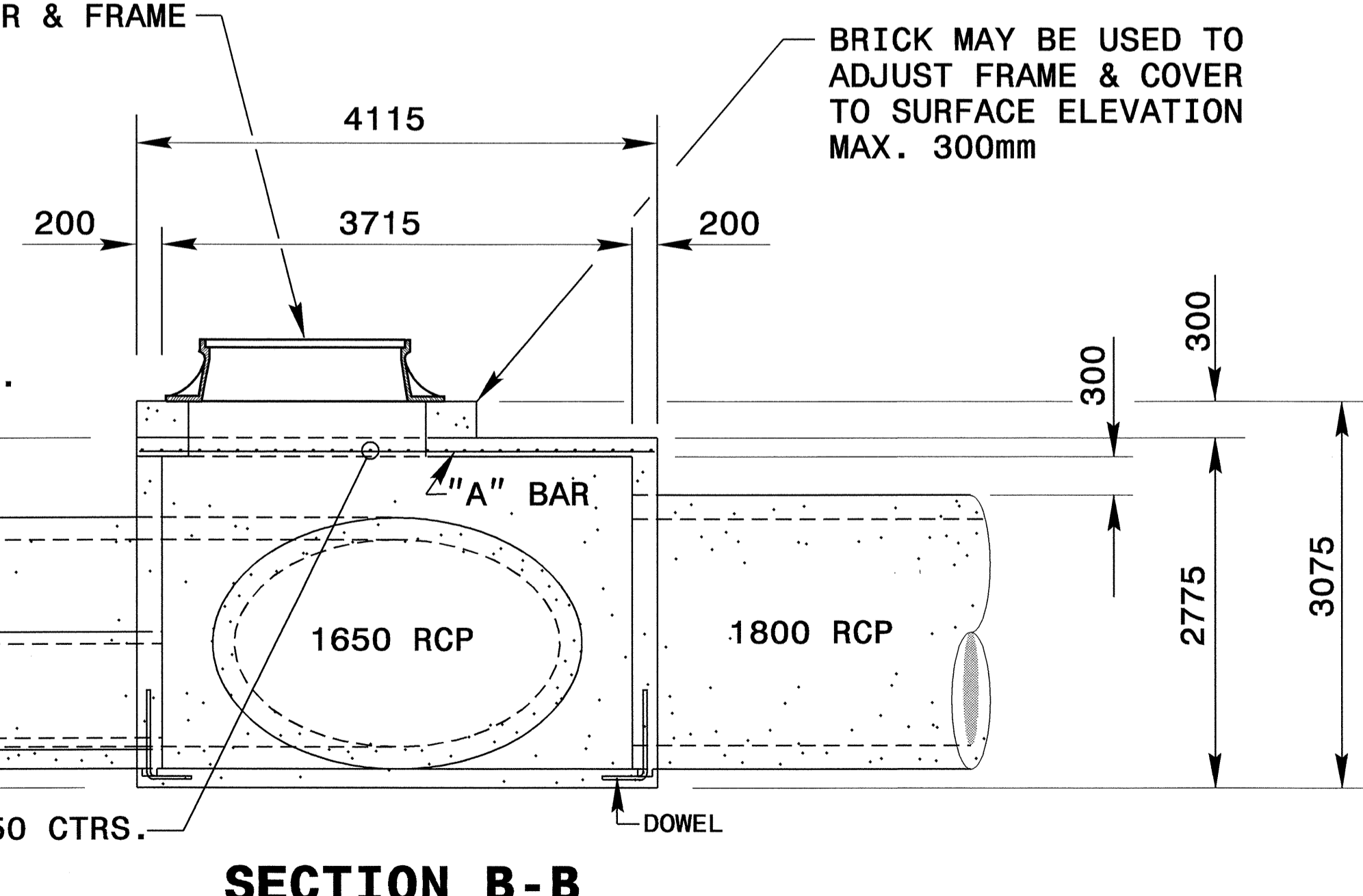
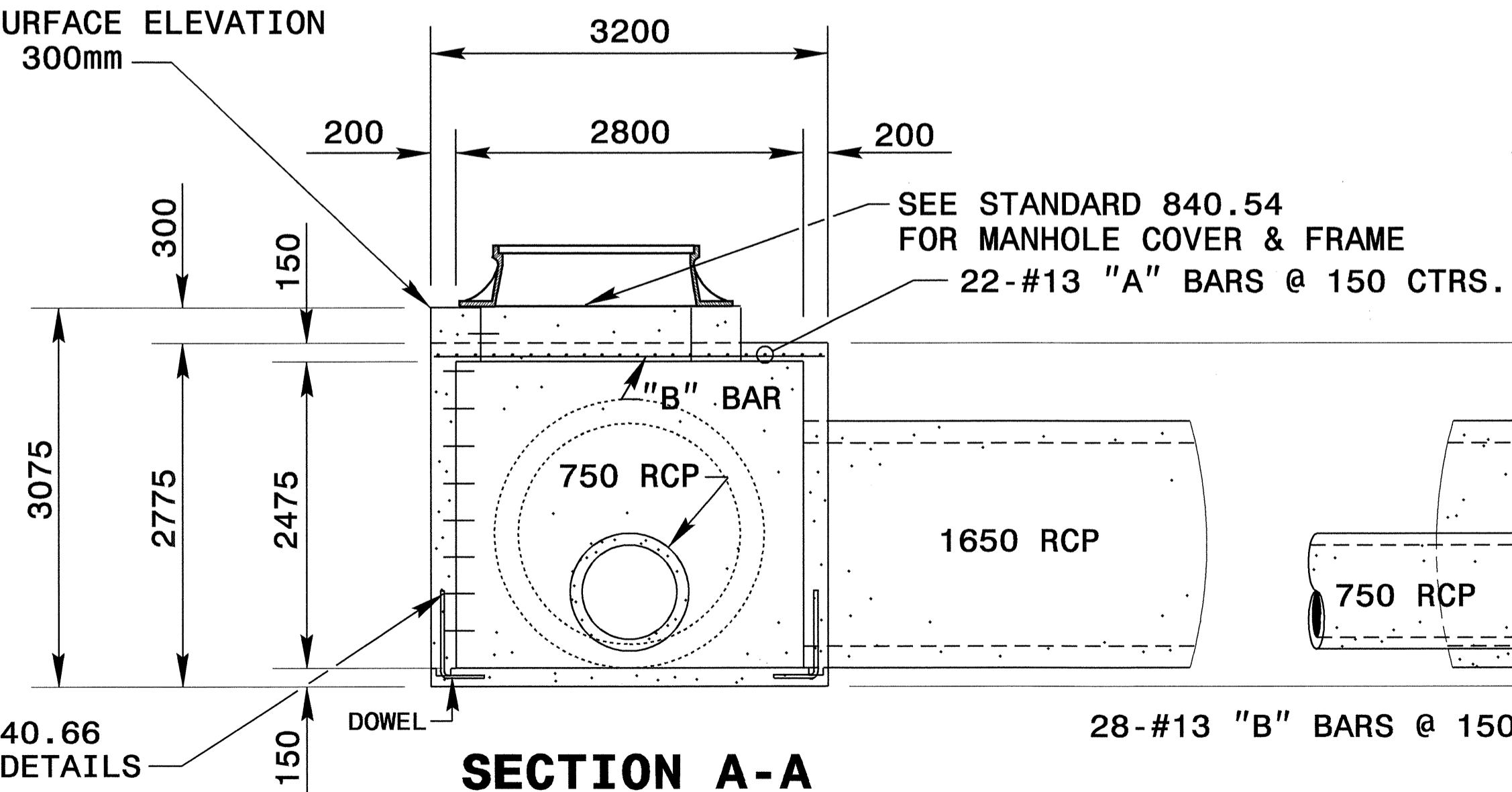


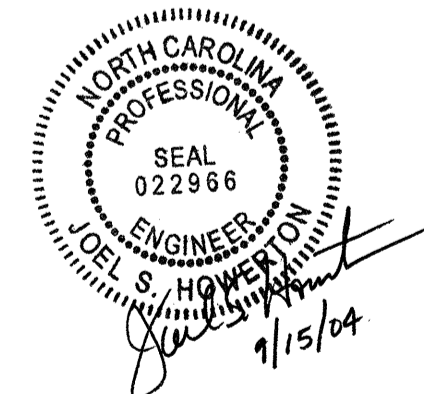
- GENERAL NOTES:**
- * CHAMFER ALL EXPOSED CORNERS 25mm.
 - * USE CLASS "B" CONCRETE THROUGHOUT.
 - * OPTIONAL CONSTRUCTION - MONOLITHIC POUR, 50mm KEYWAY, OR #13 BAR DOWELS AT 300mm CENTERS AS DIRECTED BY THE ENGINEER.
 - * USE FORMS TO CONSTRUCT THE BASE SLAB.
 - * IF REINFORCED CONCRETE PIPE IS SET IN BASE SLAB OF BOX, ADD TO BASE AS SHOWN ON STD. DWG. 840.00.
 - * PROVIDE ALL JUNCTION BOXES OVER 1.0m IN DEPTH WITH STEPS 300mm ON CENTERS IN ACCORDANCE WITH STD. DWG. 840.66.
 - * ADJUST THE STEEL, CONCRETE AND BRICK MASONRY QUANTITIES TO INCLUDE THE ADDITION OF THE MANHOLE (I.E. DIAGONAL BARS SHORTENED AROUND OPENING IN TOP SLAB, ADDITIONAL VARIABLE HEIGHT BRICK MASONRY, OPENING IN TOP SLAB.)
 - * MAX. DEPTH OF THIS STRUCTURE FROM TOP OF BOTTOM SLAB TO TOP ELEVATION IS 3.6 METERS.
 - * ALL DIMENSIONS ARE SHOWN IN MILLIMETERS UNLESS OTHERWISE NOTED.

DIMENSIONS AND QUANTITIES FOR CONCRETE JUNCTION BOXES								
DIMENSIONS OF BOX AND PIPE				BAR SIZE TYPE	LENGTH	STEEL REINF.	CLASS "B" CONC. m ³ .	PIPE DEDUCTIONS m. ³
PIPE	LENGTH	WIDTH	HEIGHT					
				#5- A	90m	kg.	m ³ .	R.C.
				#5- B	89m		MIN. "H"	
750								-0.14
1650								-0.92
1800								-0.75
BOX	4115	3200	2775		179m	294kg	10.8cu.m	9 cu.m

BRICK MAY BE USED TO ADJUST FRAME & COVER TO SURFACE ELEVATION MAX. 300mm



SEE STD.840.66 FOR STEP DETAILS



DESIGN SERVICES UNIT
STANDARDS AND SPECIAL DESIGN
Office 919-250-4128 FAX 919-250-4119

JUNCTION BOX DETAIL

ORIGINAL BY: _____ DATE: _____
 MODIFIED BY: rnbritt DATE: 09-07-04
 CHECKED BY: _____ DATE: 7/7/04
 FILE SPEC.: details/nbritt/metric/mrural/r2206cjb.dgn

07-SEP-2004 08:23 V:\Special Details\rbritt\metric\mural\2206c junction box.dgn RNBritt AT DS203039