

PROJECT REFERENCE NO. R-2206C		SHEET NO. 9	
ROADWAY DESIGN ENGINEER		HYDRAULICS ENGINEER	
CONST. REV.		R/W REV.	

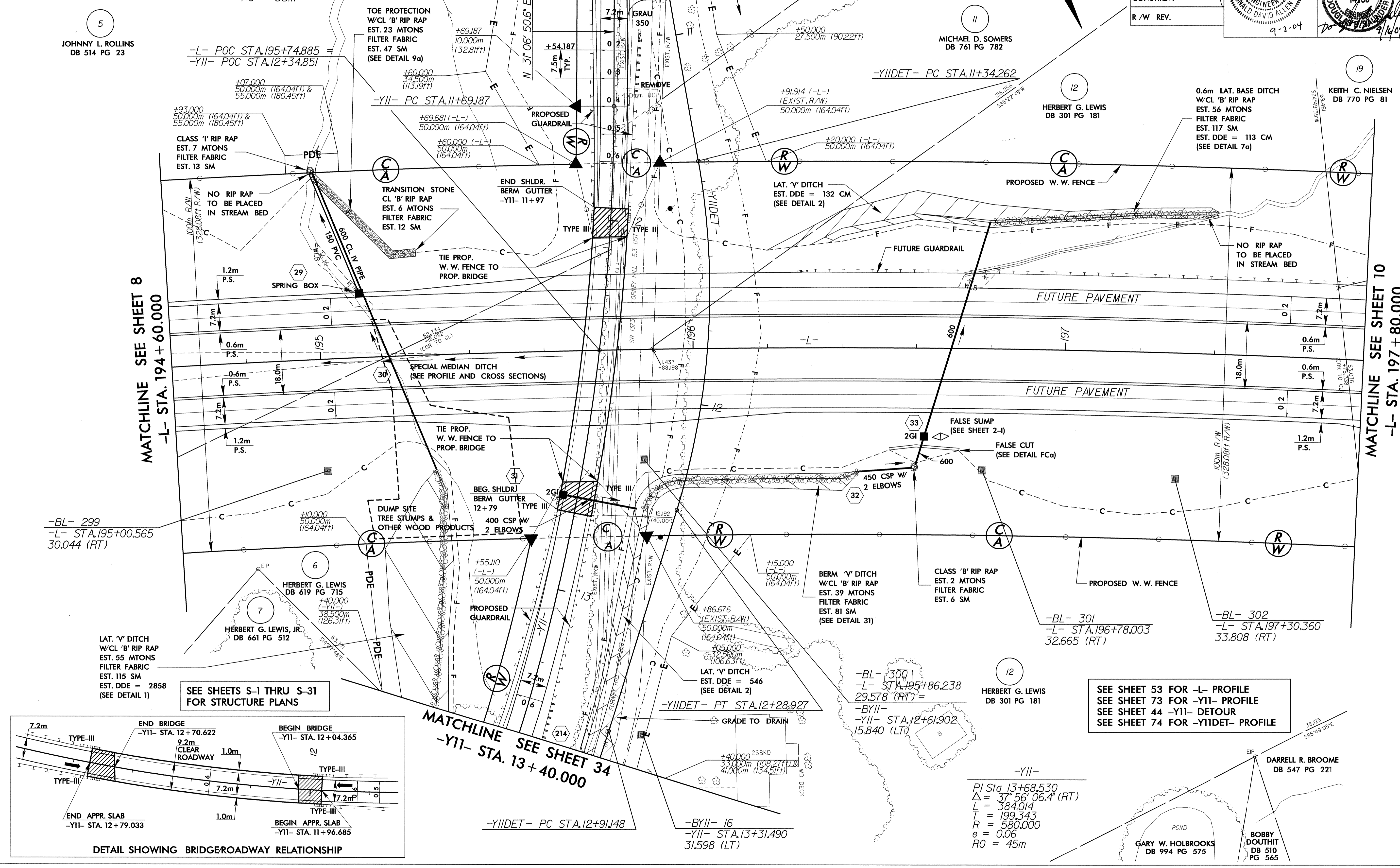
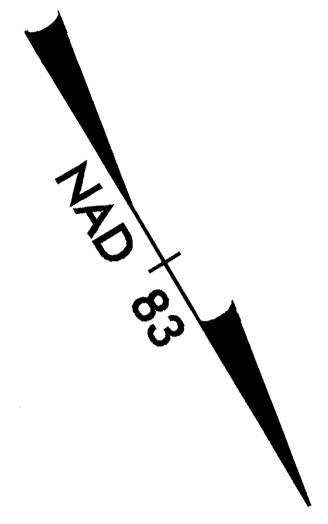
8.07.99

5
JOHNNY L. ROLLINS
DB 514 PG 23

-L-
PI Sta 199+75.908
 $\Delta = 25^\circ 54' 22.0" (RT)$
 $L = 1,356.441$
 $T = 690.016$
 $R = 3,000.000$
 $e = 0.02$
 $RO = 35m$

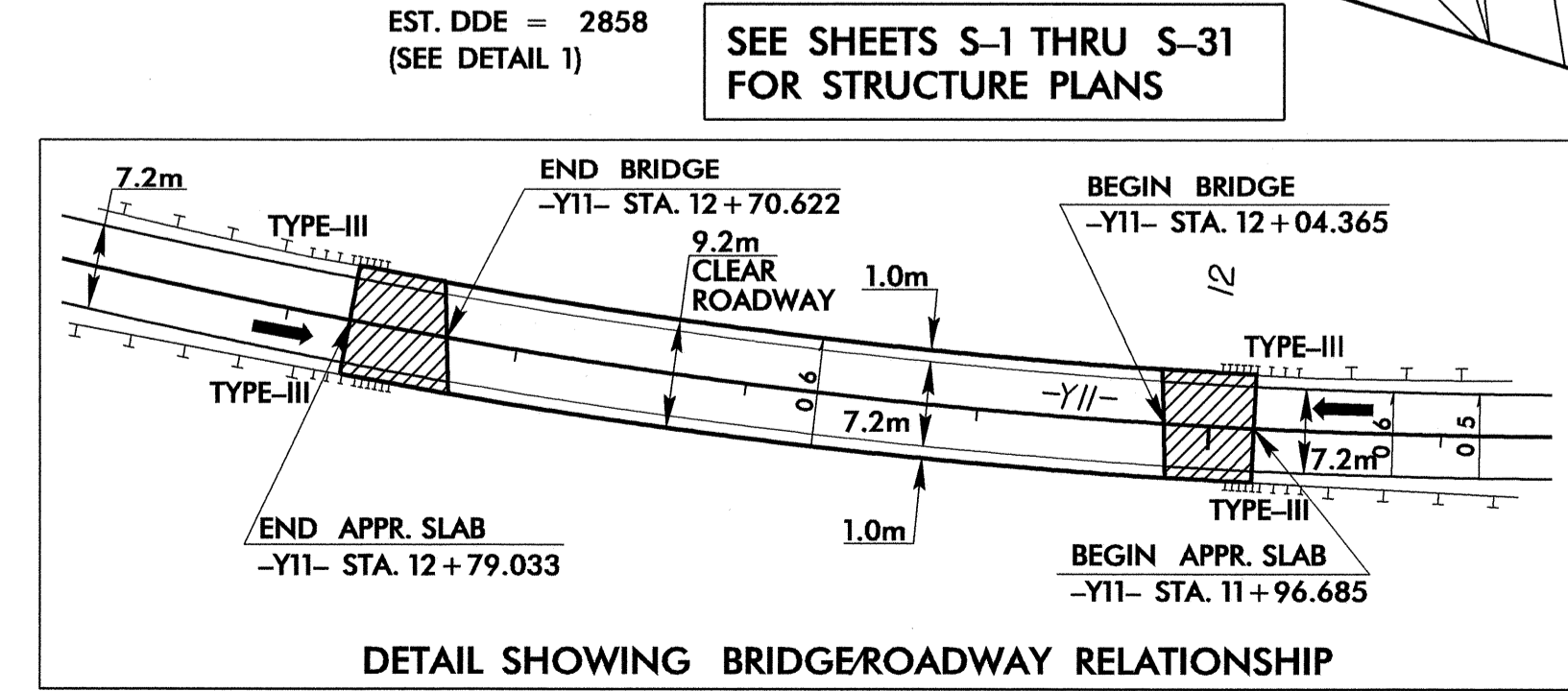
MATCHLINE SEE SHEET 33
-Y11- STA. 11+40.000

--- -L- & -Y11- SLOPE STAKES
--- -Y11DET- SLOPE STAKES



MATCHLINE SEE SHEET 8
-L- STA. 194+60.000

MATCHLINE SEE SHEET 10
-L- STA. 197+80.000



SEE SHEETS S-1 THRU S-31
FOR STRUCTURE PLANS

SEE SHEET 53 FOR -L- PROFILE
SEE SHEET 73 FOR -Y11- PROFILE
SEE SHEET 44 -Y11- DETOUR
SEE SHEET 74 FOR -Y11DET- PROFILE

01-SEP-2004 12:43
R:\psh9\195154\195154.dwg