

SEE SHEETS S-32 THRU S-101 FOR STRUCTURE PLANS

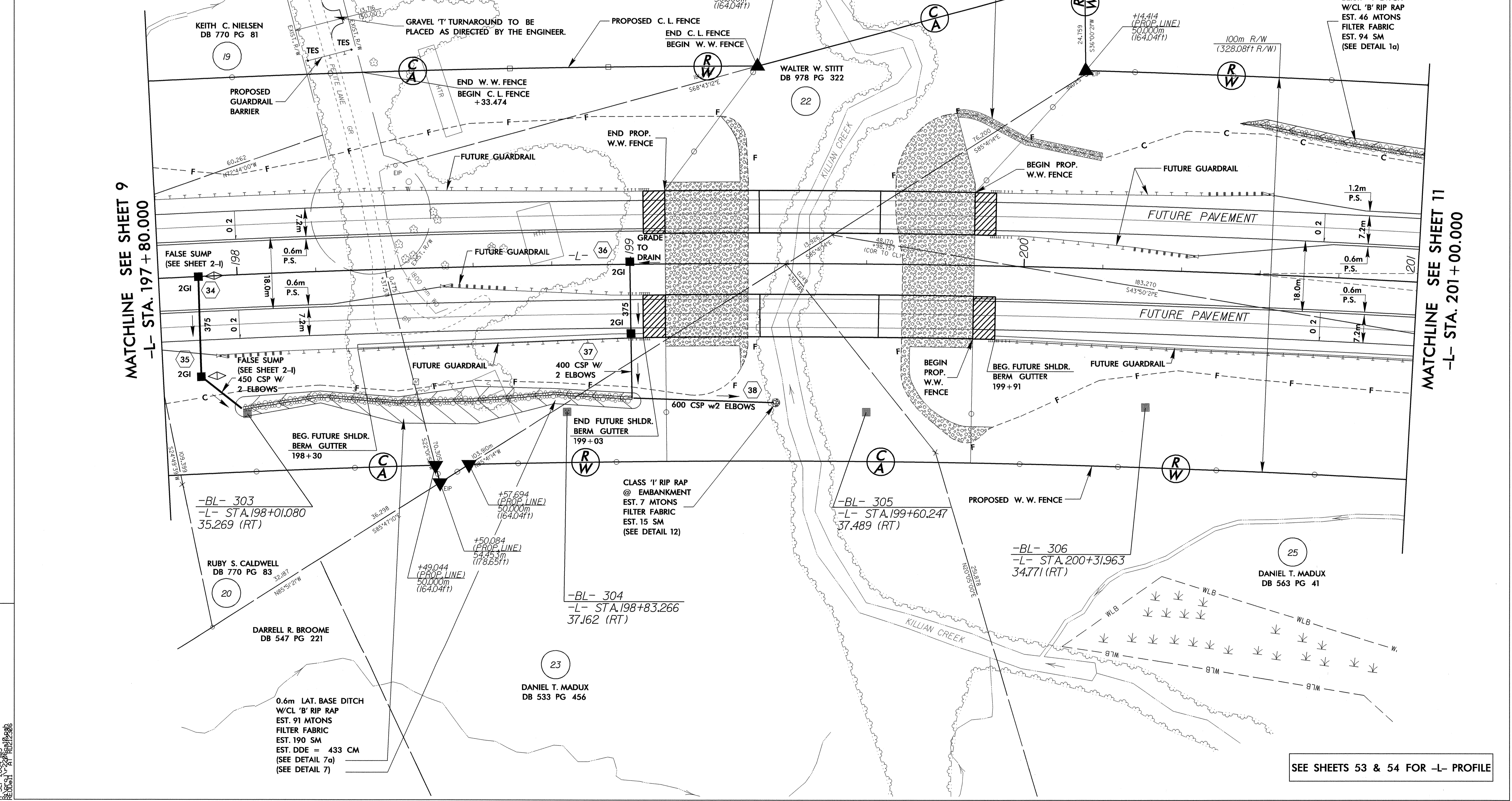
-L-
 PI Sta 199+75.908
 $\Delta = 25^\circ 54' 22.0''$ (RT)
 $L = 1,356.441$
 $T = 690.016$
 $R = 3,000.000$
 $e = 0.02$
 $RO = 35m$

PROJECT REFERENCE NO. R-2206C		SHEET NO. 10	
R/W SHEET NO.			
ROADWAY DESIGN ENGINEER KEITH C. NIELSEN DB 770 PG 81		HYDRAULICS ENGINEER KENNETH F. CARPENTER DB 896 PG 355	
CONST. REV.		R/W REV.	

Scale: 5 0 10
 METRIC
 NAD 83
 Professional Engineer Seal: Keith C. Nielsen, No. 15356, Exp. 9-2-04
 Professional Engineer Seal: Kenneth F. Carpenter, No. 19180, Exp. 9/30/04

MATCHLINE SEE SHEET 9
 -L- STA. 197 + 80.000

MATCHLINE SEE SHEET 11
 -L- STA. 201 + 00.000



SEE SHEETS 53 & 54 FOR -L- PROFILE

REVISIONS

17-SEP-2004 JMS
 REODell RD212306