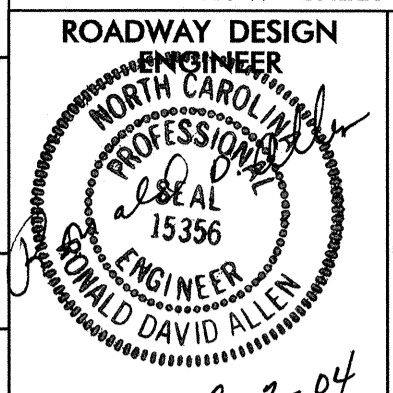
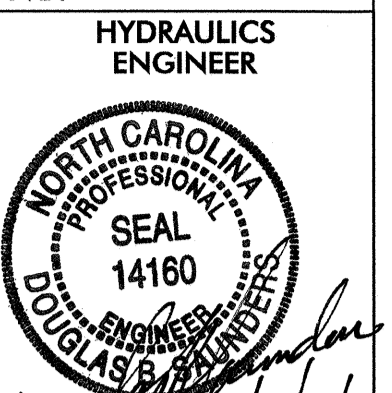
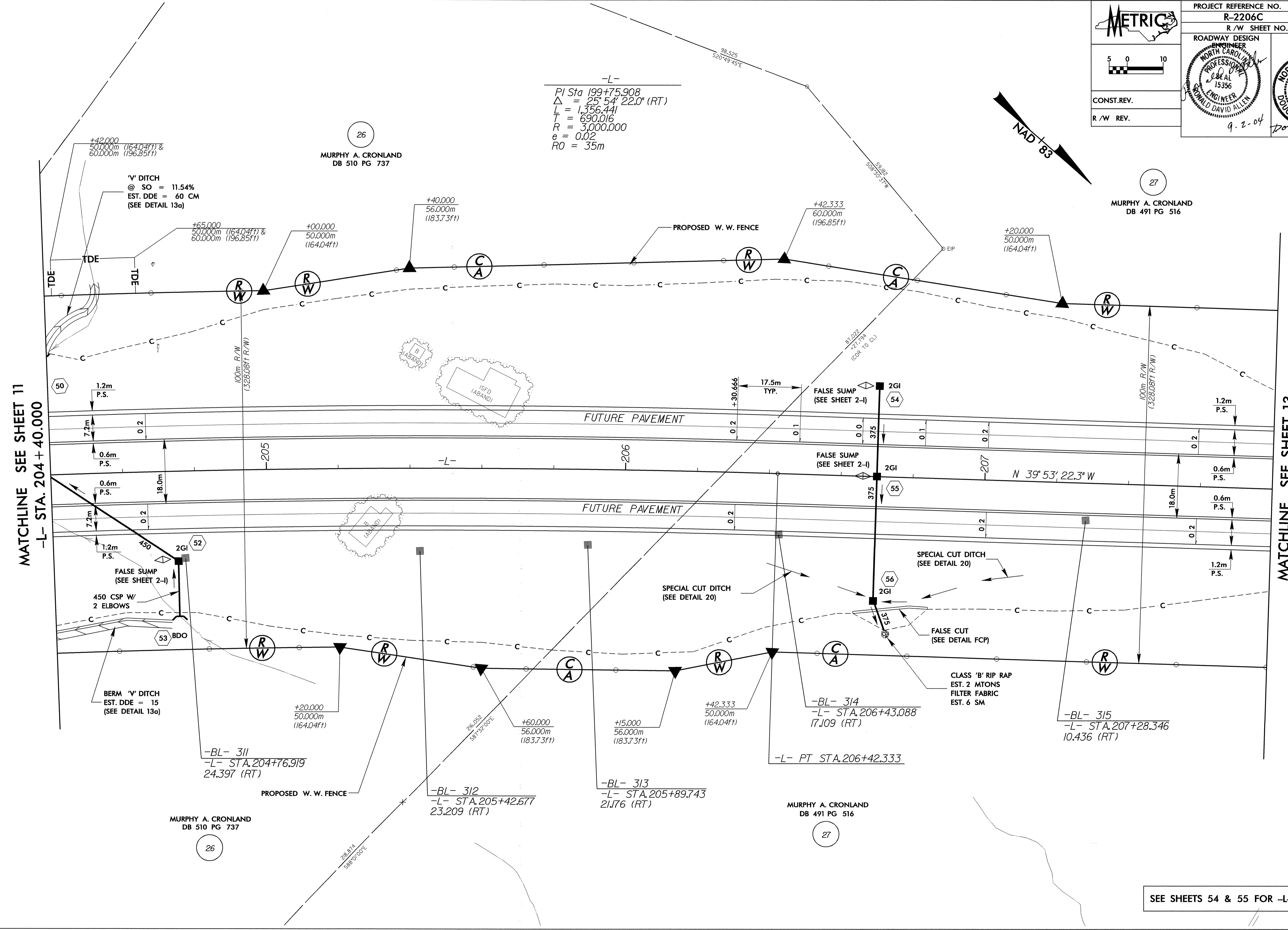
 5 0 10	PROJECT REFERENCE NO.	SHEET NO.
	R-2206C	12
CONST. REV. R/W REV.	R/W SHEET NO.	HYDRAULICS ENGINEER
		 DONALD DAVID ALLEN 15356 9.2.04
		 DOUGLAS R. ALLEN 14160 9/16/04

-L-  
 PI Sta 199+75.908  
 $\Delta = 25^{\circ} 54' 22.0''$  (RT)  
 $L = 1,356.441$   
 $T = 690.016$   
 $R = 3,000.000$   
 $e = 0.02$   
 $RO = 35m$



MATCHLINE SEE SHEET 11  
 -L- STA. 204 + 40.000

MATCHLINE SEE SHEET 13  
 -L- STA. 207 + 80.000

MURPHY A. CRONLAND  
 DB 510 PG 737

MURPHY A. CRONLAND  
 DB 491 PG 516

SEE SHEETS 54 & 55 FOR -L- PROFILE

03-AUG-2004 12:37  
 8/17/04  
 268814  
 588' 10' 00"E