

METRIC

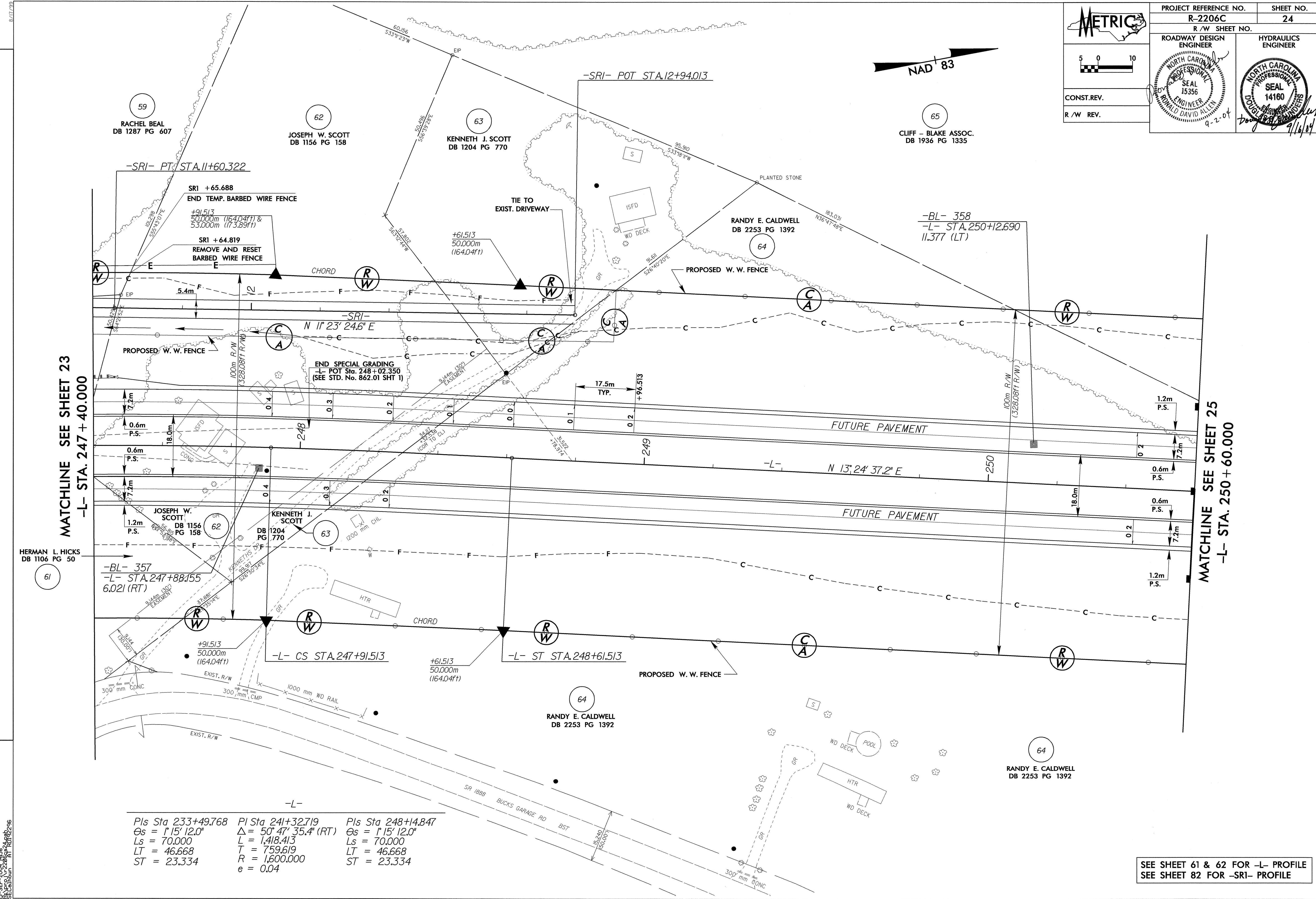
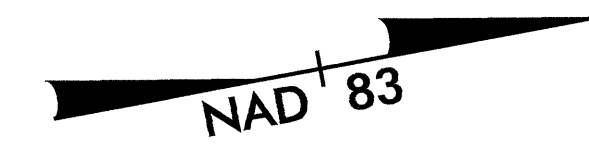
PROJECT REFERENCE NO. R-2206C SHEET NO. 24

R/W SHEET NO.

ROADWAY DESIGN ENGINEER SEAL 15356
 HYDRAULICS ENGINEER SEAL 14160

CONST. REV. R/W REV.

9-2-04



MATCHLINE SEE SHEET 23
 -L- STA. 247 + 40.000

MATCHLINE SEE SHEET 25
 -L- STA. 250 + 60.000

Pls Sta 233+49.768	Pls Sta 241+32.719	Pls Sta 248+14.847
$\Delta s = 1' 15'' 12.0''$	$\Delta = 50' 47'' 35.4''$ (RT)	$\Delta s = 1' 15'' 12.0''$
$Ls = 70.000$	$L = 1,418.413$	$Ls = 70.000$
$LT = 46.668$	$T = 759.619$	$LT = 46.668$
$ST = 23.334$	$R = 1,600.000$	$ST = 23.334$
	$e = 0.04$	

SEE SHEET 61 & 62 FOR -L- PROFILE
 SEE SHEET 82 FOR -SRI- PROFILE

REVISIONS

15-SEP-2004 14:35
 SECALHOUN AT RD192296