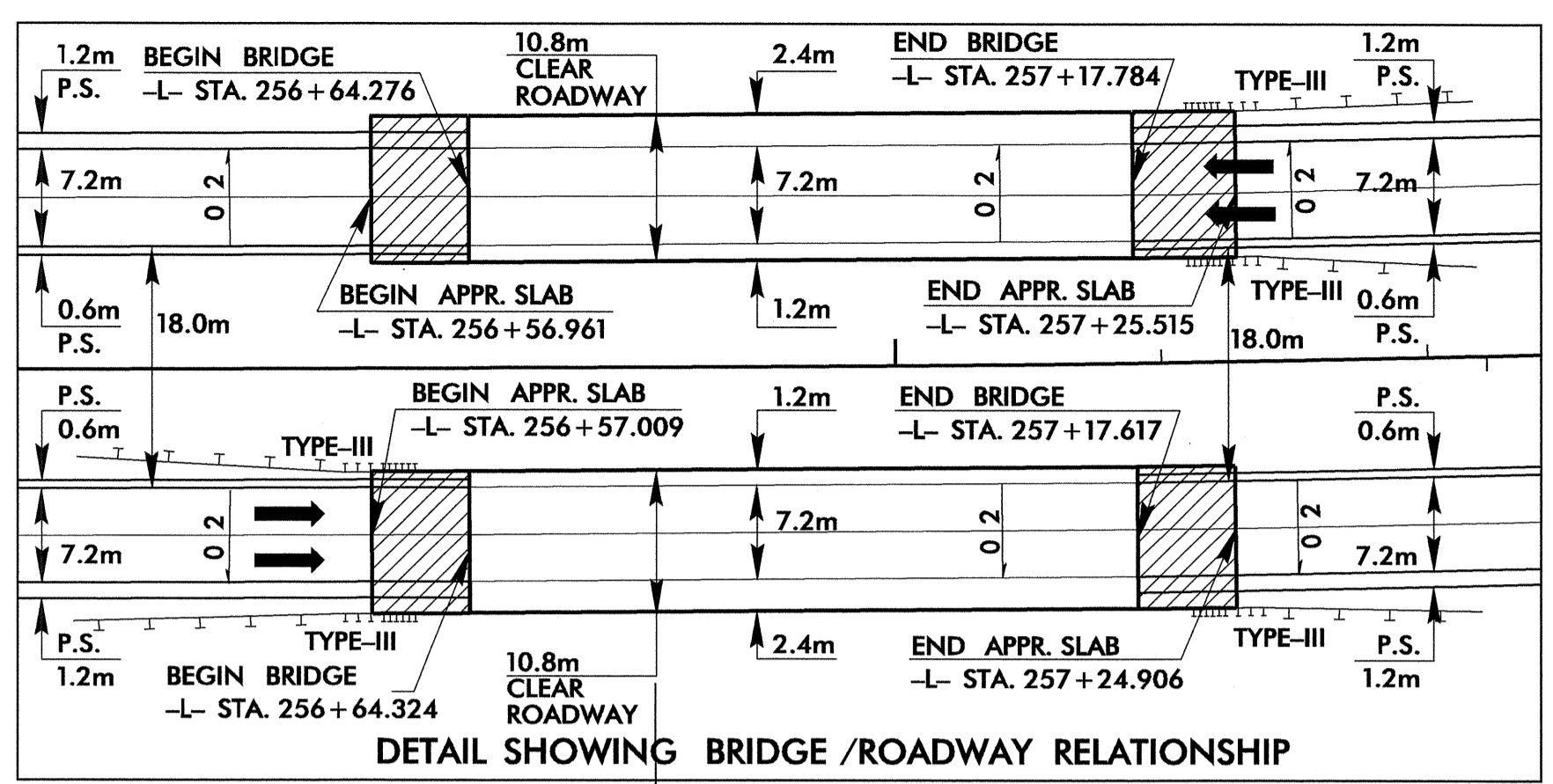
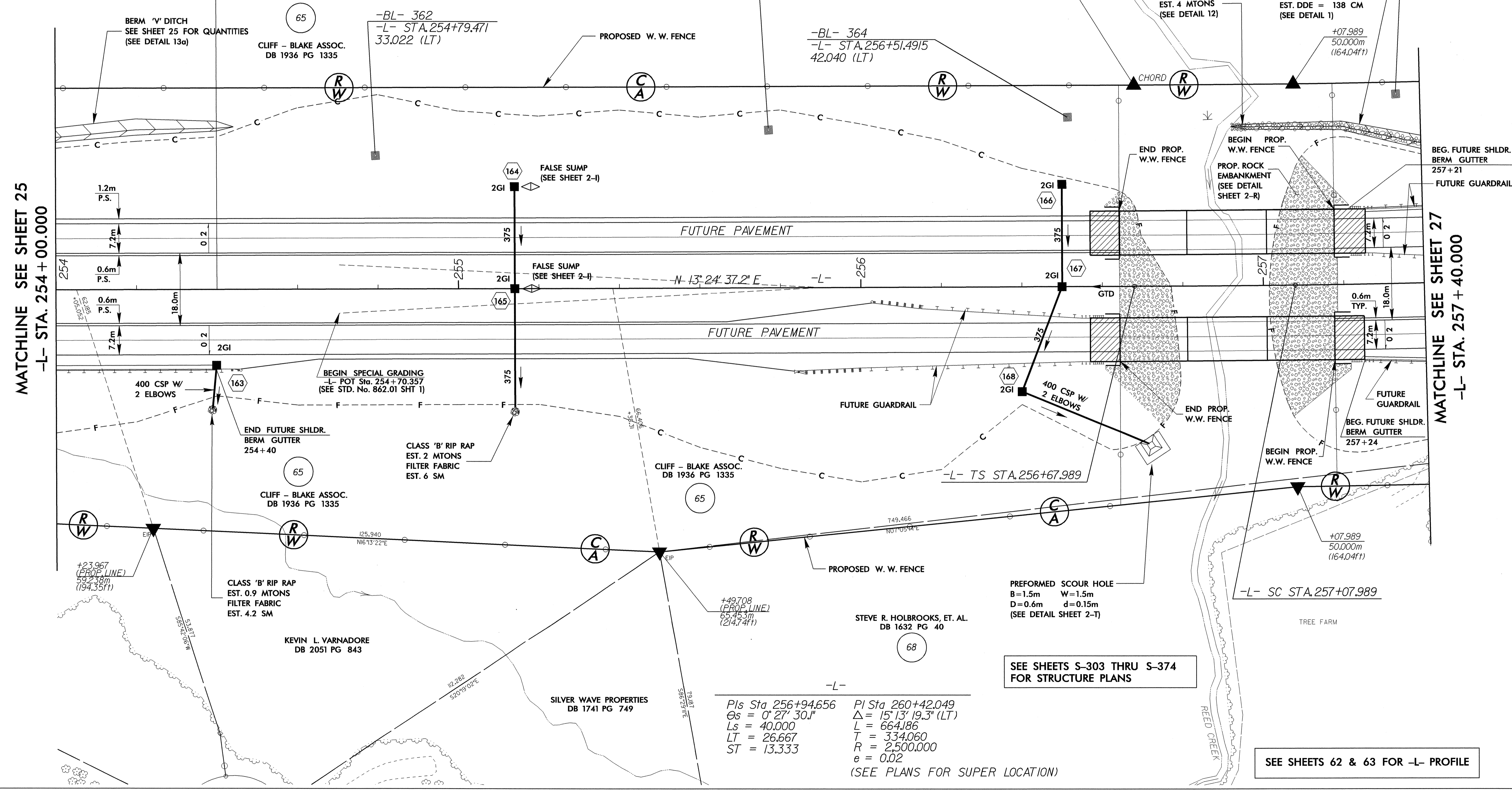


9/17/04  
 17-SEP-2004 10:2  
 RD212306



PROJECT REFERENCE NO. R-2206C		SHEET NO. 26	
R/W SHEET NO.			
ROADWAY DESIGN ENGINEER NORTH CAROLINA PROFESSIONAL SEAL 15356 RONALD DAVID ALLEN		HYDRAULICS ENGINEER NORTH CAROLINA PROFESSIONAL SEAL 14160 DOUGLAS B. HENDERSON	
CONST. REV.		R/W REV.	



MATCHLINE SEE SHEET 25  
 -L- STA. 254 + 00.000

MATCHLINE SEE SHEET 27  
 -L- STA. 257 + 40.000

SEE SHEETS S-303 THRU S-374 FOR STRUCTURE PLANS

SEE SHEETS 62 & 63 FOR -L- PROFILE

Pls Sta 256+94.656    Pl Sta 260+42.049  
 $\Delta s = 0' 27' 30.1''$      $\Delta = 15' 13' 19.3''$  (LT)  
 $L_s = 40.000$              $L = 664.186$   
 $LT = 26.667$              $T = 334.060$   
 $ST = 13.333$              $R = 2,500.000$   
                                   $e = 0.02$   
 (SEE PLANS FOR SUPER LOCATION)

REVISIONS