

METRIC

PROJECT REFERENCE NO. R-2206C SHEET NO. 28

R/W SHEET NO.

ROADWAY DESIGN ENGINEER: NORTH CAROLINA PROFESSIONAL SEAL 15356 RONALD DAVID ALLEN

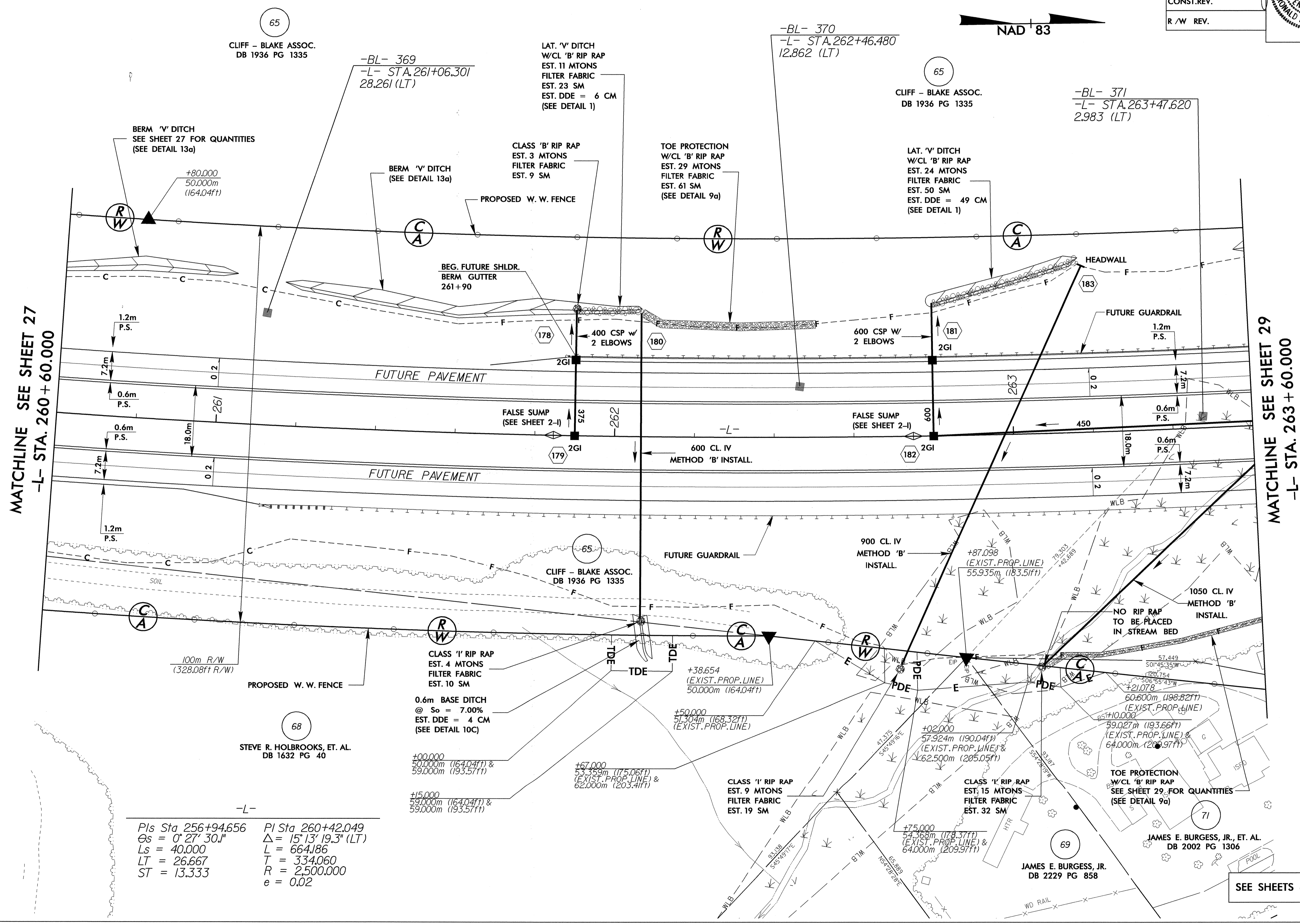
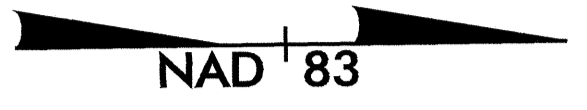
HYDRAULICS ENGINEER: NORTH CAROLINA PROFESSIONAL SEAL 14180 DOUGLAS B. BURTON

CONST. REV.

R/W REV.

9-2-04

7/16/04



MATCHLINE SEE SHEET 27
-L- STA. 260+60.000

MATCHLINE SEE SHEET 29
-L- STA. 263+60.000

-L-
Pls Sta 256+94.656 PI Sta 260+42.049
Os = 0° 27' 30.1" Δ = 15° 13' 19.3" (LT)
Ls = 40.000 L = 664.186
LT = 26.667 T = 334.060
R = 2500.000 ST = 13.333
e = 0.02

SEE SHEETS 63 & 64 FOR -L- PROFILE

REVISIONS

03-AUG-2004 12:30
SE/CLH/MS