

|   |  |   |  |
|---|--|---|--|
| PROJECT REFERENCE NO.<br>R-2206C  |  | SHEET NO.<br>30   |  |
| R/W SHEET NO.   |  |   |  |
| ROADWAY DESIGN ENGINEER<br>SEAL 15356<br>NORTH CAROLINA PROFESSIONAL ENGINEER<br>RONALD DAVID ALLEN<br>a-2-04 |  | HYDRAULICS ENGINEER<br>SEAL 14160<br>NORTH CAROLINA PROFESSIONAL ENGINEER<br>DOUGLAS B. BLUNDERS<br>9/30/04 |  |
| CONST. REV.   |  | R/W REV.  |  |

-L-  
 Pls Sta 264+18.607 PI Sta 265+95.400  
 $\Delta = 0^\circ 54' 59.9''$   $\Delta = 18^\circ 35' 31.4''$  (LT)  
 $\Theta s = 2^\circ 37' 09.5''$   $L = 283.931$   
 $Ls = 80.000$   $T = 143.224$   
 $R = 46.432$   $R = 875.000$   
 $ST = 33.592$   $e = 0.06$

-Y16-  
 PI Sta 11+48.636 PI Sta 13+63.234  
 $\Delta = 52^\circ 54' 12.1''$  (RT)  $\Delta = 55^\circ 11' 49.2''$  (LT)  
 $L = 161.584$   $L = 48.168$   
 $T = 87.068$   $T = 26.138$   
 $R = 175.000$   $R = 50.000$   
 $e = 0.08$   $e = 0.02$   
 $RO = 55m$

-SBL-  
 Pls Sta 267+69.450  
 $\Theta s = 3^\circ 19' 18.8''$   
 $Ls = 100.000$   
 $LT = 66.678$   
 $ST = 33.344$

-NBL-  
 PI Sta 10+71.600  
 $\Delta = 9^\circ 13' 25.5''$  (LT)  
 $L = 142.890$   
 $T = 71.600$   
 $R = 887.600$   
 $e = 0.06$

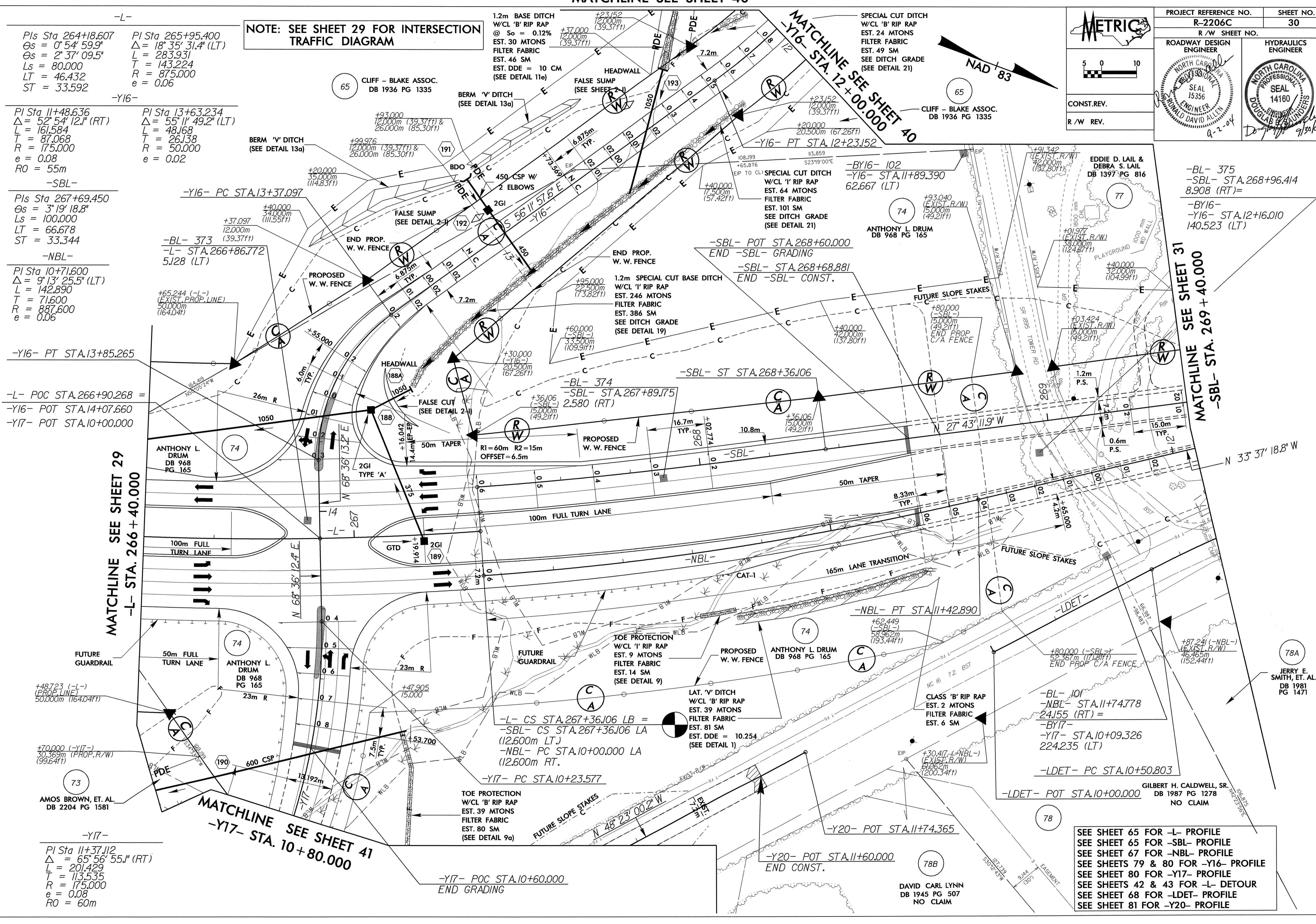
-Y16- PT STA.13+85.265  
 -L- POC STA.266+90.268 =  
 -Y16- POT STA.14+07.660  
 -Y17- POT STA.10+00.000

MATCHLINE SEE SHEET 29  
 -L- STA. 266 + 40.000

MATCHLINE SEE SHEET 41  
 -Y17- STA. 10 + 80.000

-Y17-  
 PI Sta 11+37.112  
 $\Delta = 65^\circ 56' 55.1''$  (RT)  
 $L = 201.429$   
 $T = 113.535$   
 $R = 175.000$   
 $e = 0.08$   
 $RO = 60m$

NOTE: SEE SHEET 29 FOR INTERSECTION TRAFFIC DIAGRAM



SEE SHEET 65 FOR -L- PROFILE  
 SEE SHEET 65 FOR -SBL- PROFILE  
 SEE SHEET 67 FOR -NBL- PROFILE  
 SEE SHEETS 79 & 80 FOR -Y16- PROFILE  
 SEE SHEET 80 FOR -Y17- PROFILE  
 SEE SHEETS 42 & 43 FOR -L- DETOUR  
 SEE SHEET 68 FOR -LDET- PROFILE  
 SEE SHEET 81 FOR -Y20- PROFILE

REVISIONS

9/17/04  
 17-SEP-2004 JACB  
 REVISION AT RD212306