

METRIC

PROJECT REFERENCE NO. **R-2206C** SHEET NO. **37**

R/W SHEET NO.

ROADWAY DESIGN ENGINEER: **KIM BEAL DB 1496 PG 592**

HYDRAULICS ENGINEER: **DARRELL V. BEAL DB 724 PG 844**

PROFESSIONAL SEAL 15356

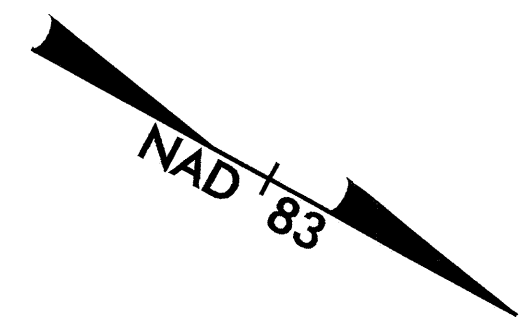
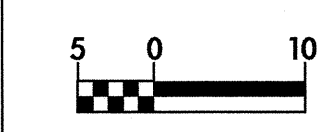
PROFESSIONAL SEAL 14180

CONST.REV.

R/W REV.

9-2-04

9/2/04



-Y14DET-

PI Sta 10+87.298	PI Sta 12+10.850
$\Delta = 8^{\circ}19'18.2''$ (RT)	$\Delta = 12^{\circ}50'12.5''$ (LT)
L = 174.290	L = 72.814
T = 87.298	T = 36.560
R = 1,200.000	R = 325.000

-Y14-

PI Sta 15+40.904
$\Delta = 10^{\circ}07'29.0''$ (LT)
L = 989.574
T = 496.078
R = 5,600.000
e = NC

-SR3-	-SR3A-
PI Sta 10+24.888	PI Sta 10+24.969
$\Delta = 89^{\circ}47'43.8''$ (RT)	$\Delta = 26^{\circ}58'49.9''$ (RT)
L = 31.345	L = 14.127
T = 19.929	T = 7.197
R = 20.000	R = 30.000
SE = RC	SE = RC

MAINTAIN ALL DRIVEWAY CONNECTIONS DURING CONSTRUCTION

--- -Y14- SLOPE STAKES

--- -Y14DET- SLOPE STAKES

SEE SHEET 76 FOR -Y14- PROFILE

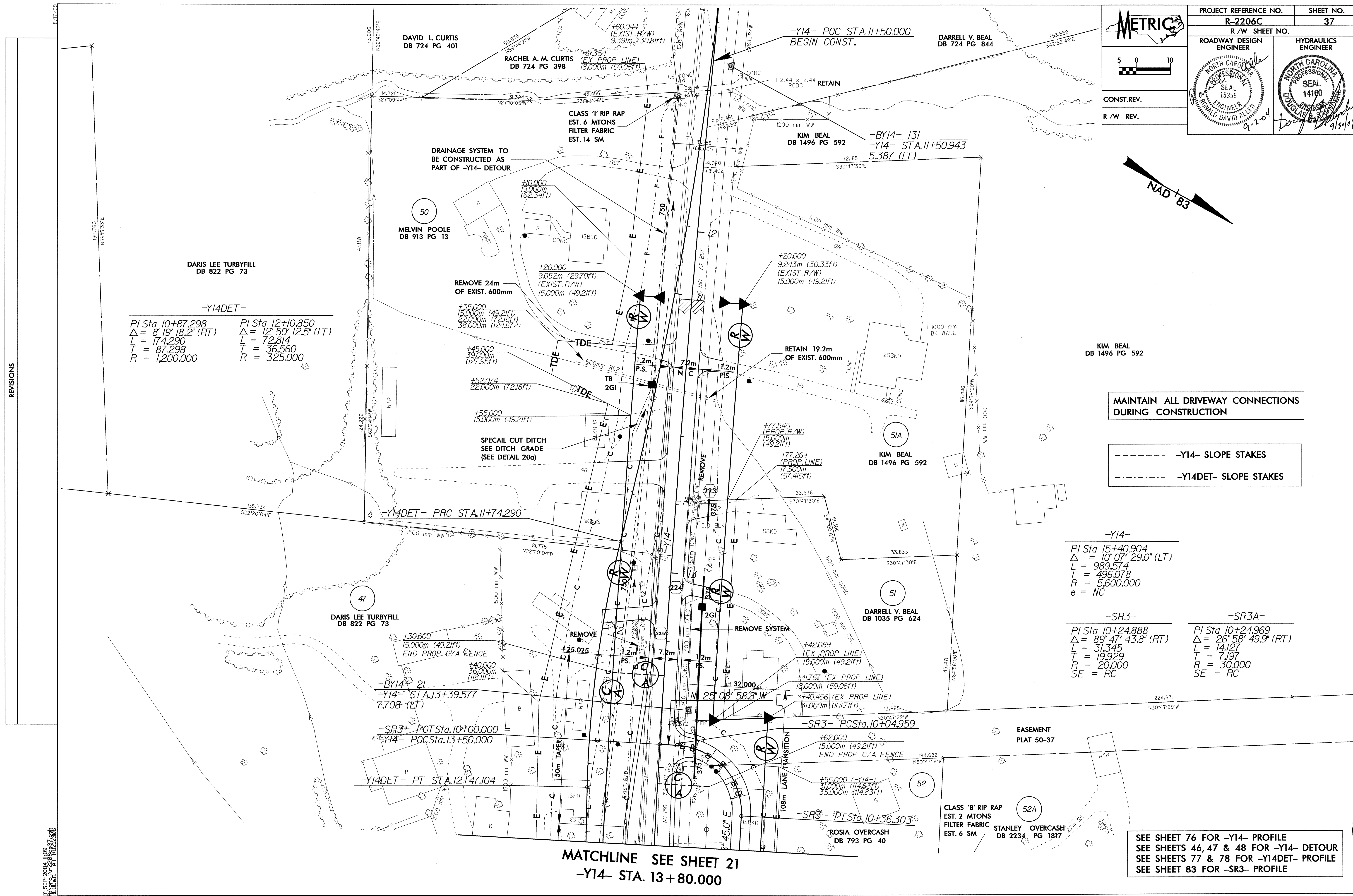
SEE SHEETS 46, 47 & 48 FOR -Y14- DETOUR

SEE SHEETS 77 & 78 FOR -Y14DET- PROFILE

SEE SHEET 83 FOR -SR3- PROFILE

MATCHLINE SEE SHEET 21

-Y14- STA. 13+80.000



REVISIONS

17-SEP-2004 MOP
REDDEN AT RD212306