

METRIC

PROJECT REFERENCE NO. R-2206C SHEET NO. 45
 R/W SHEET NO.

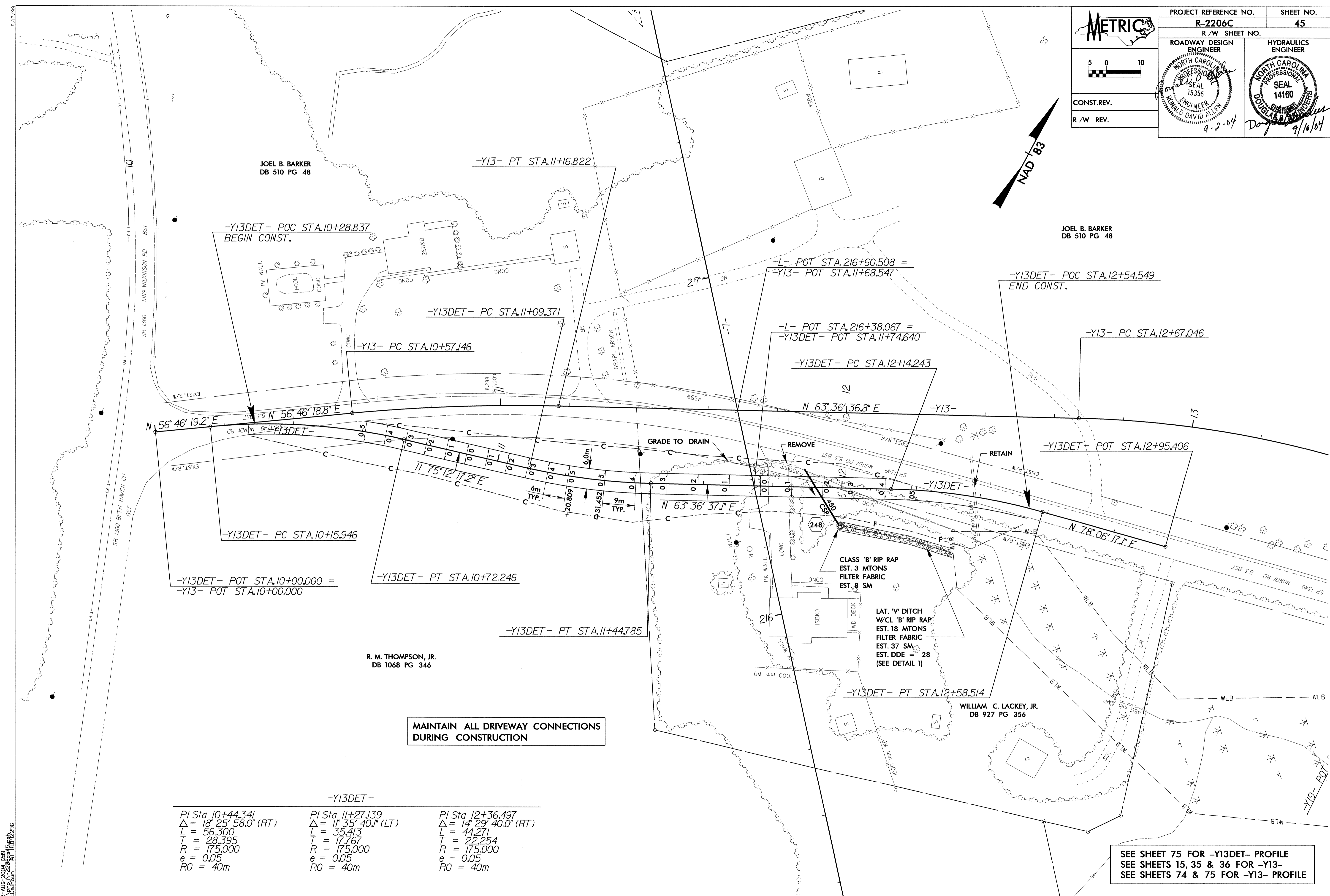
ROADWAY DESIGN ENGINEER
 NORTH CAROLINA PROFESSIONAL SEAL 15356
 RONALD DAVID ALLEN
 9-2-04

HYDRAULICS ENGINEER
 NORTH CAROLINA PROFESSIONAL SEAL 14160
 DOUGLAS B. HANDELS
 9/16/04

CONST. REV.
 R/W REV.

5 0 10

NAD 83



JOEL B. BARKER
DB 510 PG 48

JOEL B. BARKER
DB 510 PG 48

R. M. THOMPSON, JR.
DB 1068 PG 346

WILLIAM C. LACKEY, JR.
DB 927 PG 356

**MAINTAIN ALL DRIVEWAY CONNECTIONS
DURING CONSTRUCTION**

-Y13DET-		
PI Sta 10+44.341	PI Sta 11+27.139	PI Sta 12+36.497
$\Delta = 18^{\circ} 25' 58.0''$ (RT)	$\Delta = 11^{\circ} 35' 40.1''$ (LT)	$\Delta = 14^{\circ} 29' 40.0''$ (RT)
L = 56.300	L = 35.413	L = 44.271
T = 28.395	T = 17.767	T = 22.254
R = 175.000	R = 175.000	R = 175.000
e = 0.05	e = 0.05	e = 0.05
RO = 40m	RO = 40m	RO = 40m

SEE SHEET 75 FOR -Y13DET- PROFILE
 SEE SHEETS 15, 35 & 36 FOR -Y13-
 SEE SHEETS 74 & 75 FOR -Y13- PROFILE

03-AUG-2004 12:49
 SEC:calhoun rd-09oc34