

METRIC

PROJECT REFERENCE NO. R-2206C SHEET NO. 49

R/W SHEET NO.

ROADWAY DESIGN ENGINEER: RONALD DAVID ALLEN, 15356

HYDRAULICS ENGINEER: DOUGLAS B. BARKER, 14180

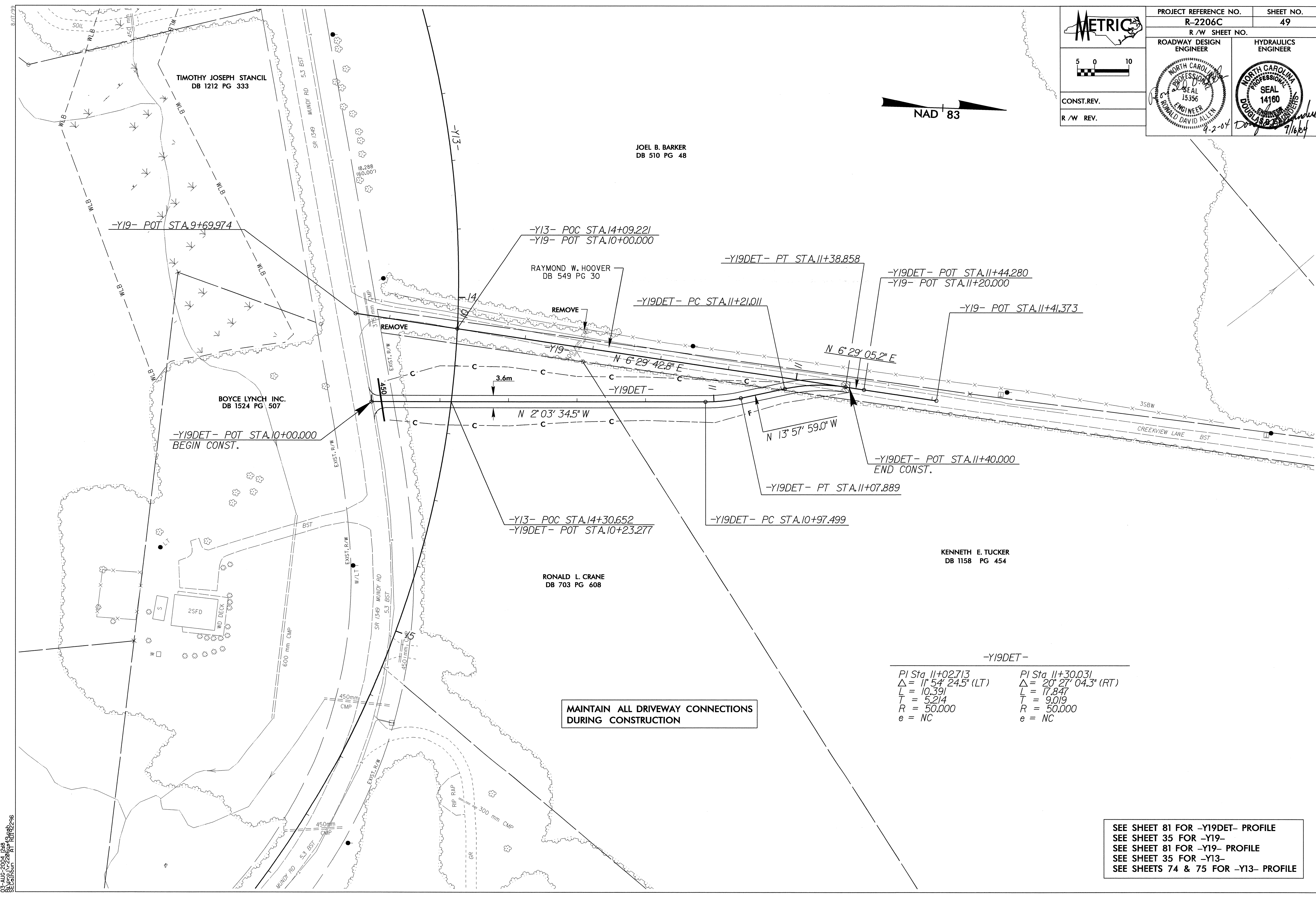
CONST. REV.

R/W REV.

Scale: 5 0 10

NAD 83

Professional Engineer Seals for Ronald David Allen and Douglas B. Barker.



MAINTAIN ALL DRIVEWAY CONNECTIONS DURING CONSTRUCTION

-Y19DET-

PI Sta. 11+02.713	PI Sta. 11+30.031
$\Delta = 11^{\circ} 54' 24.5''$ (LT)	$\Delta = 20^{\circ} 27' 04.3''$ (RT)
L = 10.391	L = 17.847
T = 5.214	T = 9.019
R = 50,000	R = 50,000
e = NC	e = NC

SEE SHEET 81 FOR -Y19DET- PROFILE
 SEE SHEET 35 FOR -Y19- PROFILE
 SEE SHEET 81 FOR -Y13- PROFILE
 SEE SHEET 35 FOR -Y13- PROFILE
 SEE SHEETS 74 & 75 FOR -Y13- PROFILE

03-AUG-2004 12:48
 SEC:calhoun rd-09oce34