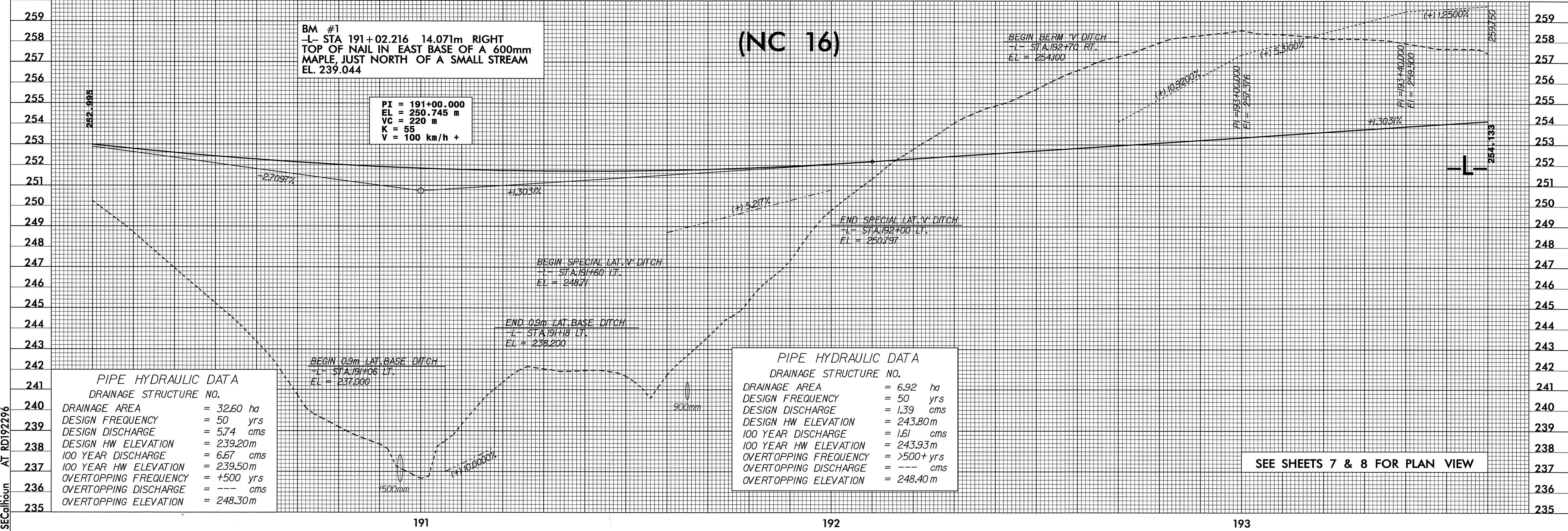
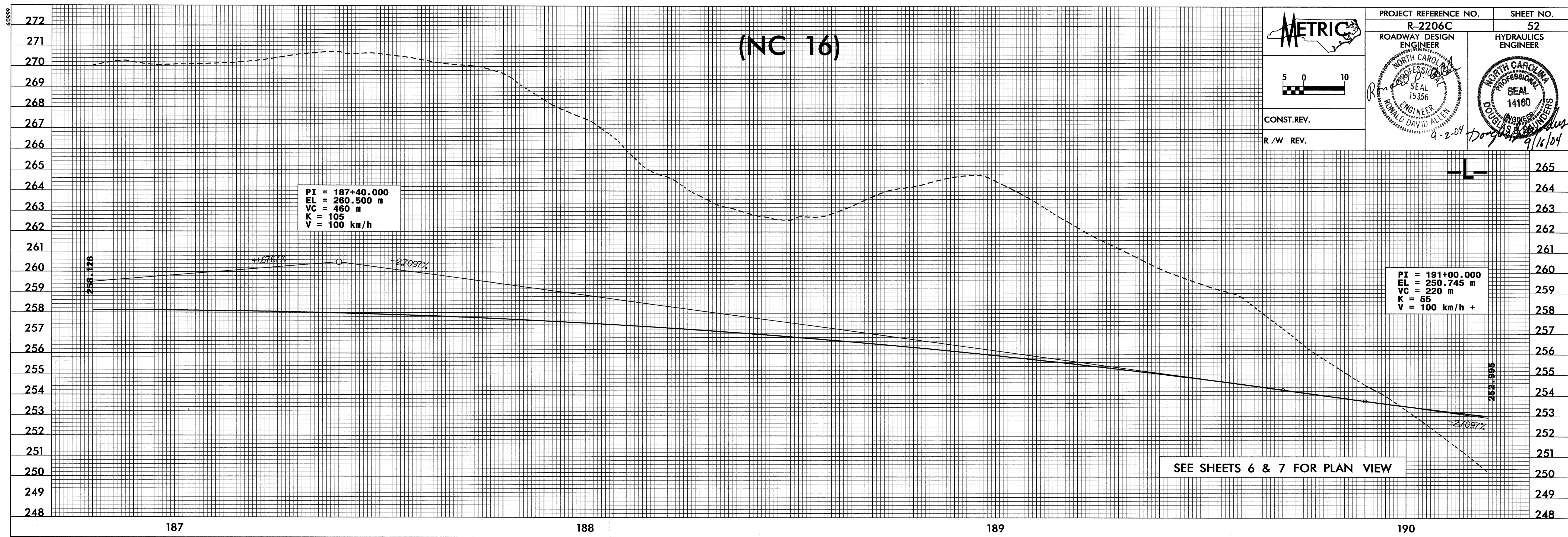


PROJECT REFERENCE NO. R-2206C	SHEET NO. 52
ROADWAY DESIGN ENGINEER	HYDRAULICS ENGINEER
<i>(Signature)</i> NORTH CAROLINA PROFESSIONAL SEAL 15356 RONALD DAVID ALLEN 9-2-04	<i>(Signature)</i> NORTH CAROLINA PROFESSIONAL SEAL 14160 DOUGLAS 9/16/04
CONST. REV.	
R/W REV.	



PIPE HYDRAULIC DATA
DRAINAGE STRUCTURE NO.

DRAINAGE AREA	= 32.60 ha
DESIGN FREQUENCY	= 50 yrs
DESIGN DISCHARGE	= 5.74 cms
DESIGN HW ELEVATION	= 239.20m
100 YEAR DISCHARGE	= 6.67 cms
100 YEAR HW ELEVATION	= 239.50m
OVERTOPPING FREQUENCY	= +500 yrs
OVERTOPPING DISCHARGE	= --- cms
OVERTOPPING ELEVATION	= 248.30m

PIPE HYDRAULIC DATA
DRAINAGE STRUCTURE NO.

DRAINAGE AREA	= 6.92 ha
DESIGN FREQUENCY	= 50 yrs
DESIGN DISCHARGE	= 1.39 cms
DESIGN HW ELEVATION	= 243.80m
100 YEAR DISCHARGE	= 1.61 cms
100 YEAR HW ELEVATION	= 243.93m
OVERTOPPING FREQUENCY	= >500+ yrs
OVERTOPPING DISCHARGE	= --- cms
OVERTOPPING ELEVATION	= 248.40m

15-JUL-2004 15:51
R:\proj\2206c\pfi
SECalhoun AT RD192296