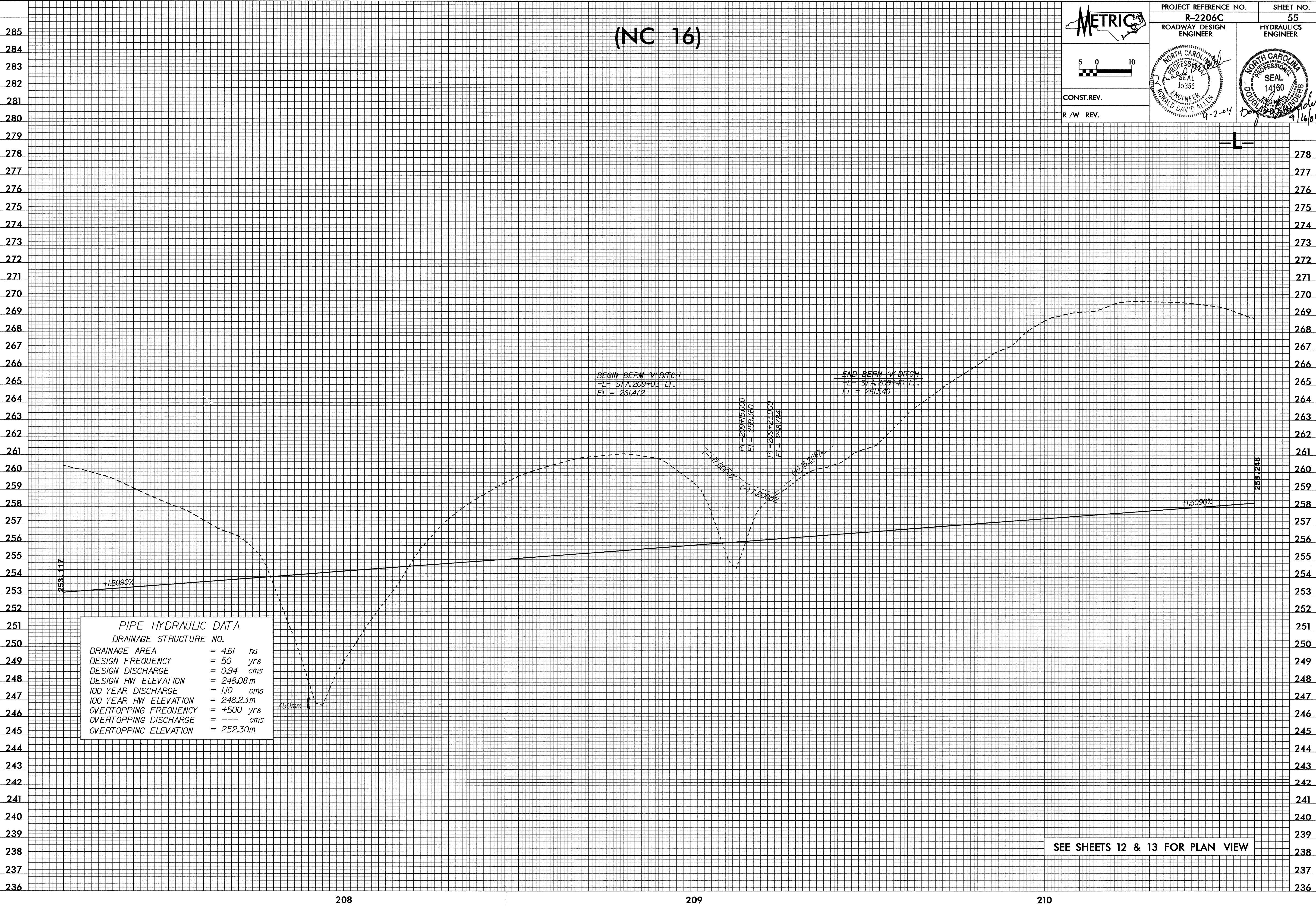


15-JUL-2004 15:50
SECalhoun AT RD192296 R2206c.plt



PROJECT REFERENCE NO. R-2206C SHEET NO. 55

ROADWAY DESIGN ENGINEER HYDRAULICS ENGINEER

CONST. REV. R/W REV.

METRIC

5 0 10

NORTH CAROLINA PROFESSIONAL SEAL 15356 ROYAL D. ALLEN 9-2-04

NORTH CAROLINA PROFESSIONAL SEAL 14180 DOUGLAS R. ADAMS 9-16-04