

METRIX

5 0 10'

CONST. REV.

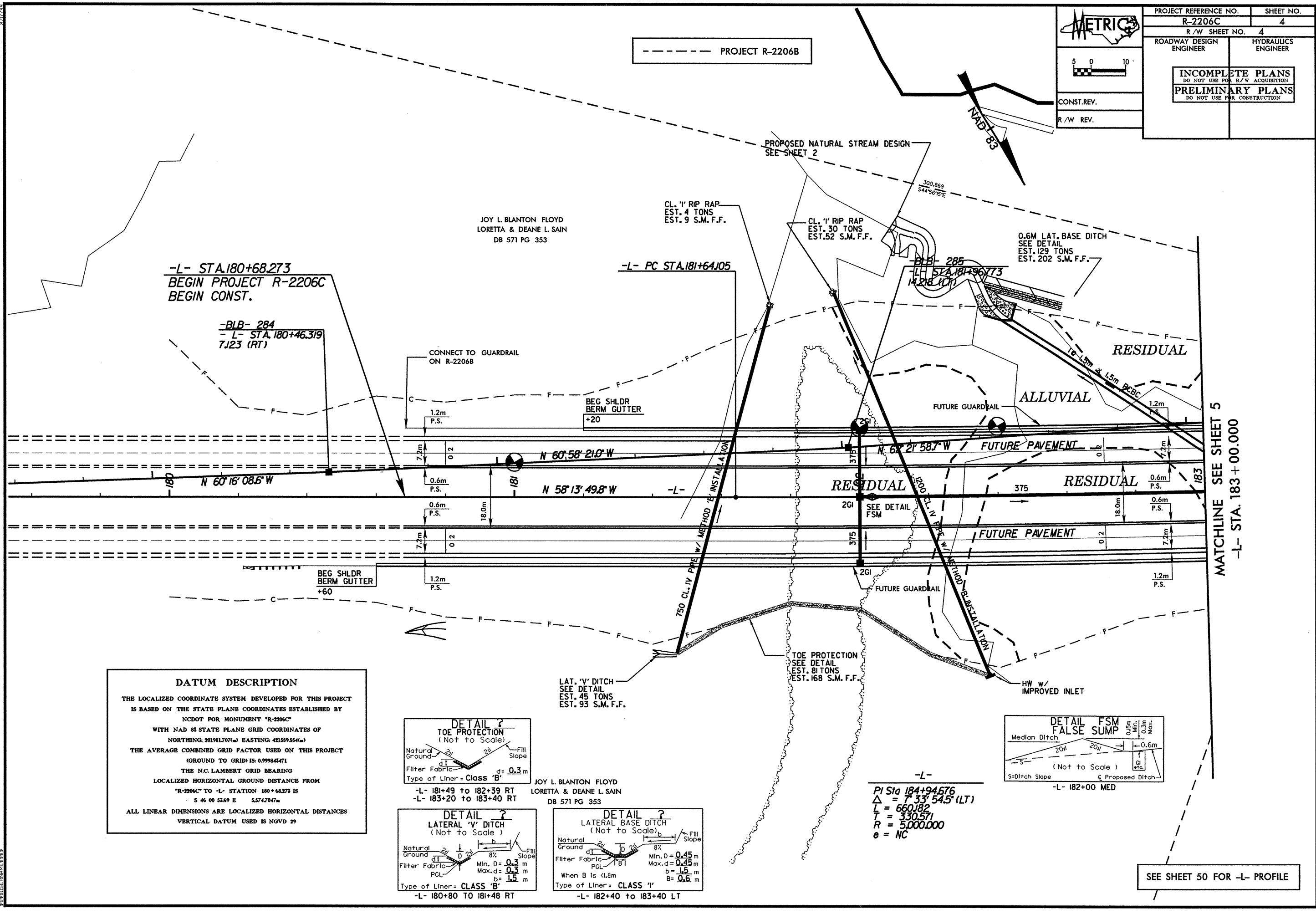
R/W REV.

PROJECT REFERENCE NO. R-2206C	SHEET NO. 4
R/W SHEET NO. 4	
ROADWAY DESIGN ENGINEER	HYDRAULICS ENGINEER

INCOMPLETE PLANS
DO NOT USE FOR R/W ACQUISITION

PRELIMINARY PLANS
DO NOT USE FOR CONSTRUCTION

PROJECT R-2206B



-L- STA. 180+68.273
BEGIN PROJECT R-2206C
BEGIN CONST.

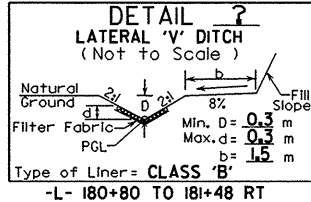
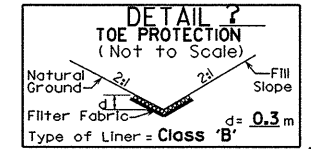
-BLB- 284
-L- STA. 180+46.319
7123 (RT)

-L- PC STA. 181+64.105

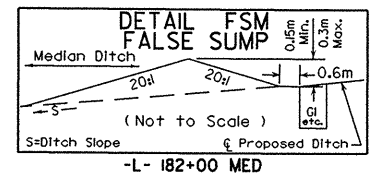
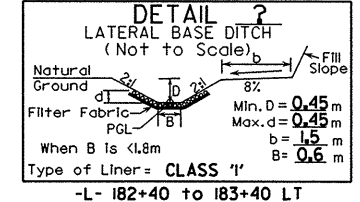
MATCHLINE SEE SHEET 5
-L- STA. 183+00.000

DATUM DESCRIPTION

THE LOCALIZED COORDINATE SYSTEM DEVELOPED FOR THIS PROJECT IS BASED ON THE STATE PLANE COORDINATES ESTABLISHED BY NCDOT FOR MONUMENT "R-2206C" WITH NAD 83 STATE PLANE GRID COORDINATES OF NORTHING: 201911707(±) EASTING: 421559454(±) THE AVERAGE COMBINED GRID FACTOR USED ON THIS PROJECT (GROUND TO GRID) IS: 0.999845471 THE N.C. LAMBERT GRID BEARING LOCALIZED HORIZONTAL GROUND DISTANCE FROM "R-2206C" TO -L- STATION 180+68.273 IS S 46 00 53.69 E 65747047m ALL LINEAR DIMENSIONS ARE LOCALIZED HORIZONTAL DISTANCES VERTICAL DATUM USED IS NGVD 29



JOY L. BLANTON FLOYD
LORETTA & DEANE L. SAIN
DB 571 PG 353



-L-

PI Sta 184+94.676
Δ = 7 33' 54.5" (LT)
L = 660.182
T = 330.571
R = 5,000.000
e = NC

SEE SHEET 50 FOR -L- PROFILE