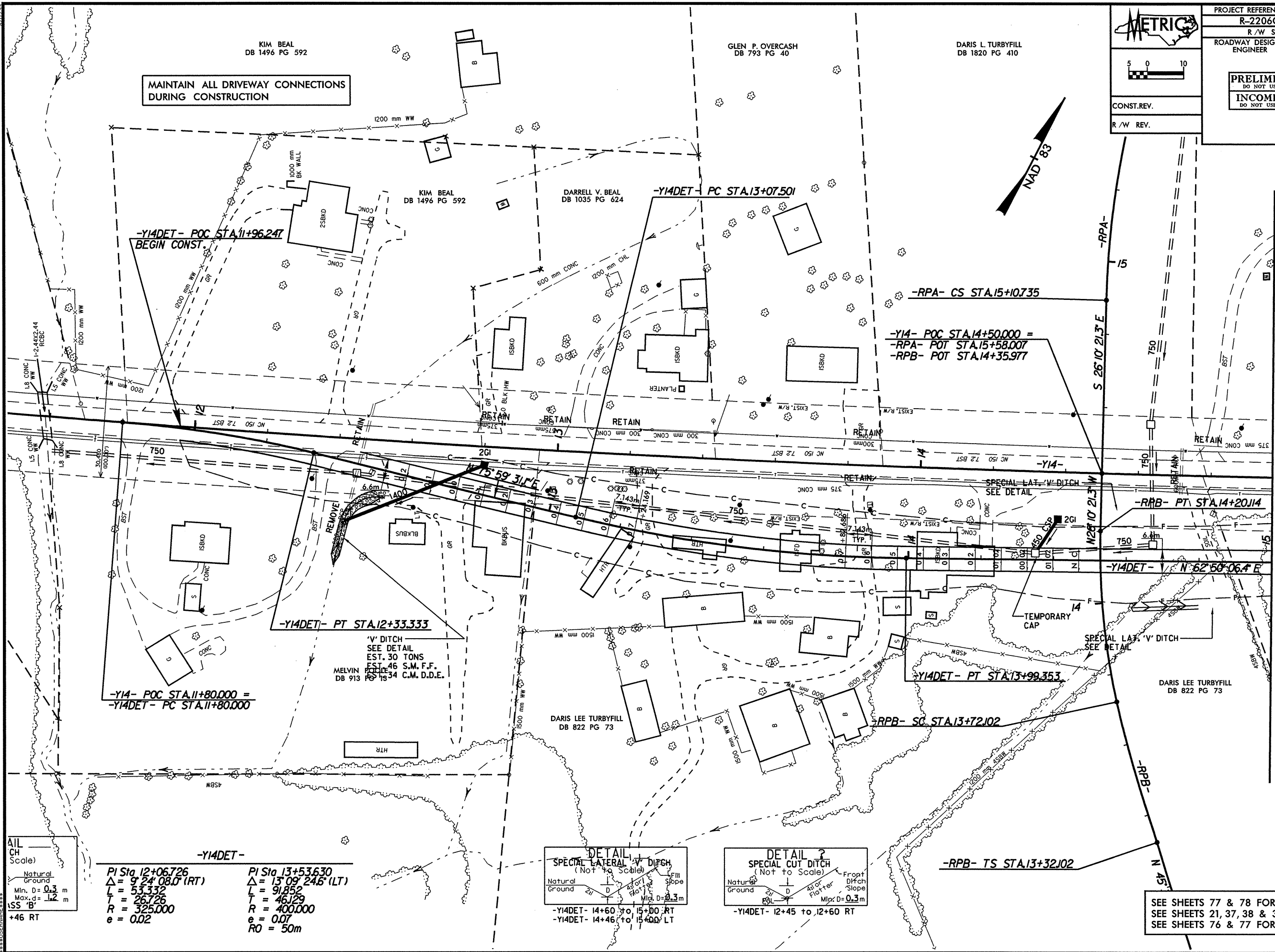


5 0 10

CONST. REV.

R/W REV.

| | |
|--|---------------------|
| PROJECT REFERENCE NO. R-2206C | SHEET NO. 46 |
| R/W SHEET NO. | |
| ROADWAY DESIGN ENGINEER | HYDRAULICS ENGINEER |
| PRELIMINARY PLANS DO NOT USE FOR CONSTRUCTION INCOMPLETE PLANS DO NOT USE FOR R/W ACQUISITION | |



MAINTAIN ALL DRIVEWAY CONNECTIONS DURING CONSTRUCTION

KIM BEAL
DB 1496 PG 592

GLEN P. OVERCASH
DB 793 PG 40

DARIS L. TURBYFILL
DB 1820 PG 410

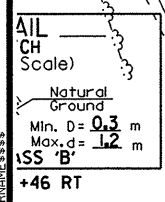
KIM BEAL
DB 1496 PG 592

DARRELL V. BEAL
DB 1035 PG 624

MELVIN F. BEAL
DB 913 PG 134 C.M. D.D.E.

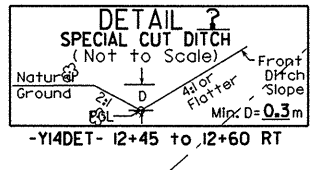
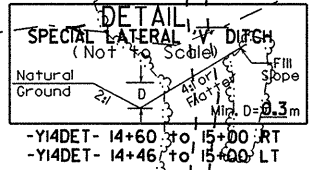
DARIS LEE TURBYFILL
DB 822 PG 73

DARIS LEE TURBYFILL
DB 822 PG 73



-Y14DET-

| | |
|--|---|
| PI Sta. 12+06.726 $\Delta = 9' 24'' 08.0''$ (RT) $L = 53.332$ $T = 26.726$ $R = 325.000$ $e = 0.02$ | PI Sta. 13+53.630 $\Delta = 13' 09'' 24.6''$ (LT) $L = 91.852$ $T = 46.129$ $R = 400.000$ $e = 0.07$ $RO = 50m$ |
|--|---|



SEE SHEETS 77 & 78 FOR -Y14DET- PROFILE
SEE SHEETS 21, 37, 38 & 39 FOR -Y14-
SEE SHEETS 76 & 77 FOR -Y14- PROFILE

MATCHLINE SEE SHEET 47
-Y14DET- STA. 15+00.000