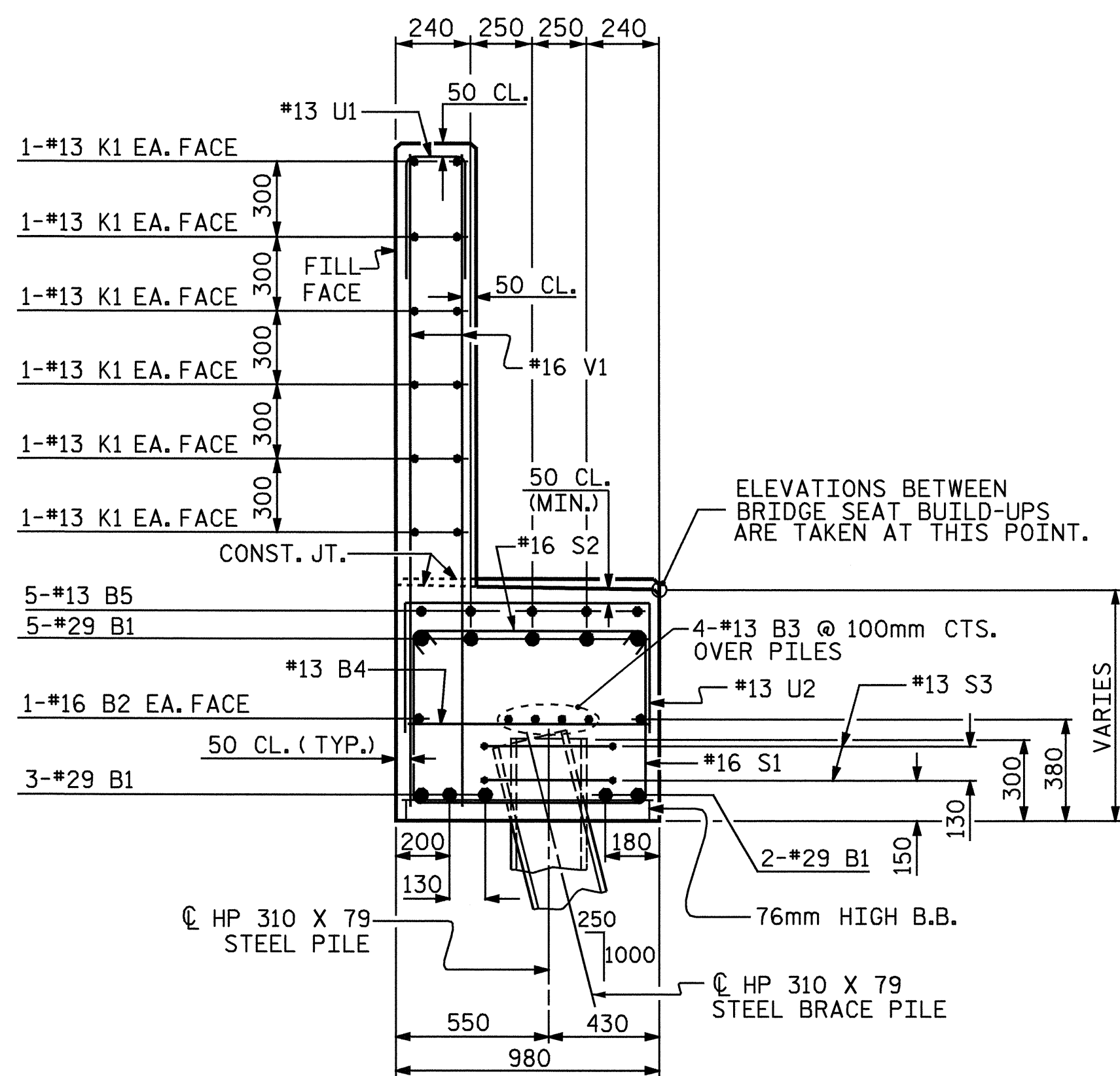
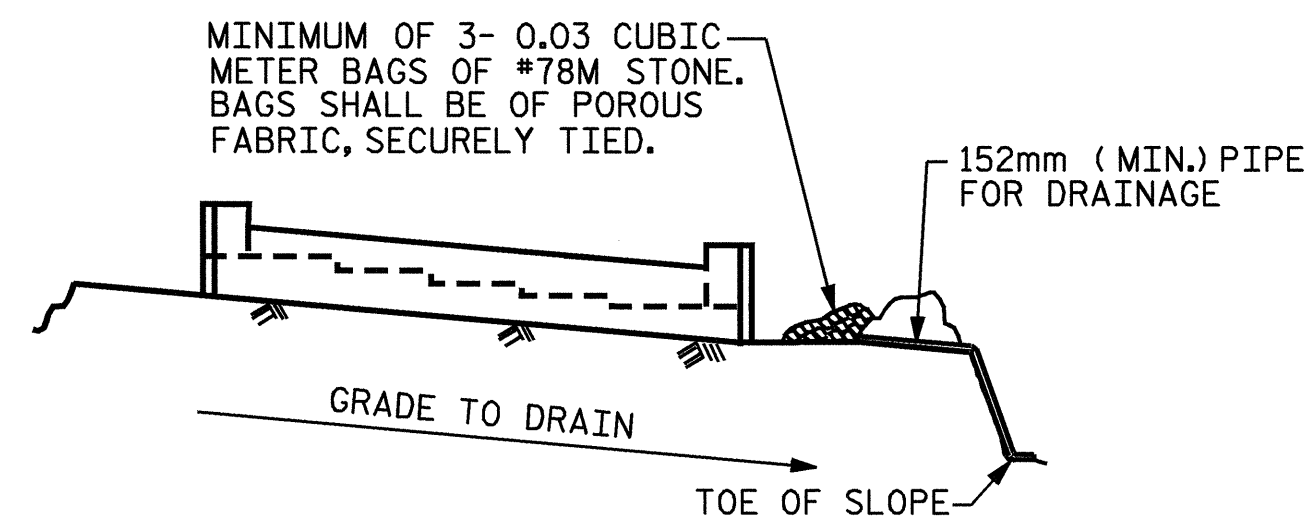


SECTION A-A



SECTION B-B



BAGGED STONE AND PIPE SHALL BE PLACED IMMEDIATELY AFTER COMPLETION OF END BENT EXCAVATION. PIPE MAY BE EITHER CONCRETE, CORRUGATED STEEL, CORRUGATED ALUMINUM ALLOY, OR CORRUGATED PLASTIC. PERFORATED PIPE WILL NOT BE ALLOWED.

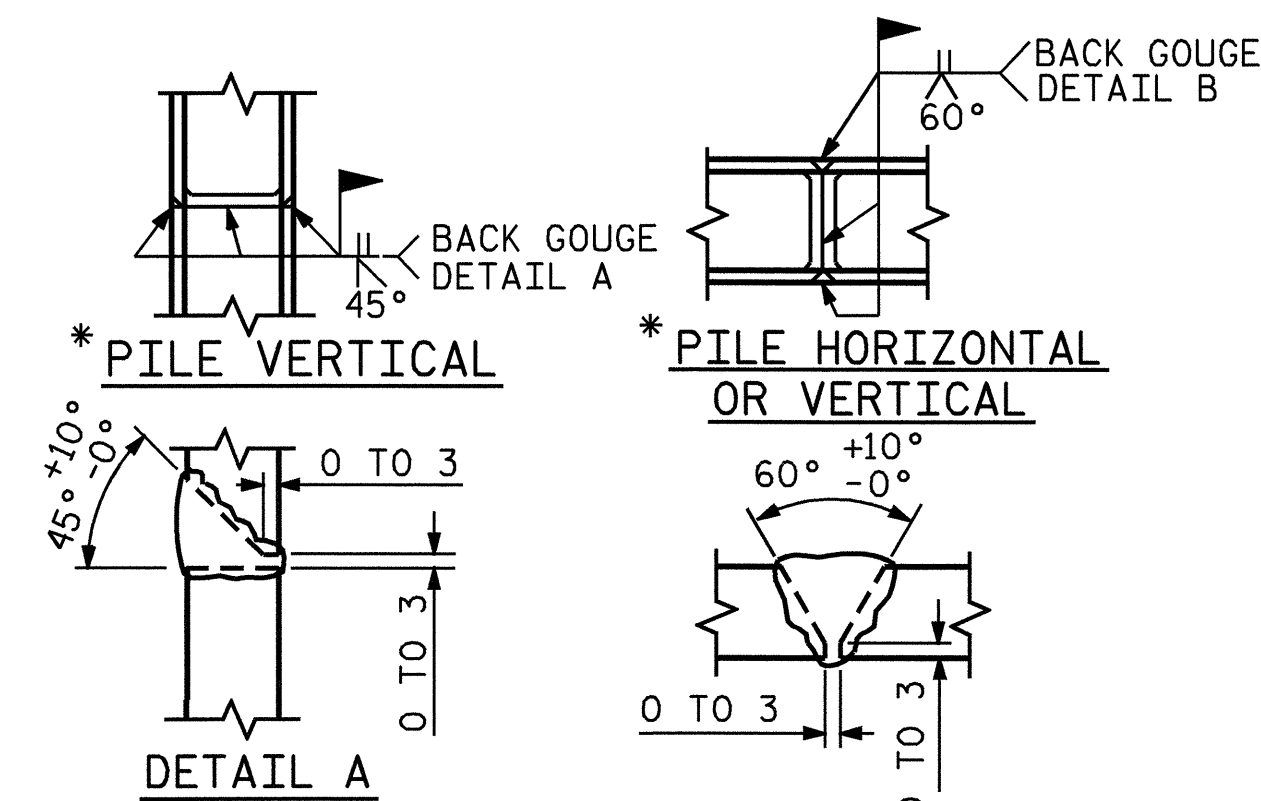
BAGGED STONE SHALL REMAIN IN PLACE UNTIL THE ENGINEER DIRECTS THAT IT BE REMOVED. THE CONTRACTOR SHALL REMOVE AND DISPOSE OF SILT ACCUMULATIONS AT BAGGED STONE WHEN SO DIRECTED BY THE ENGINEER. BAGS SHALL BE REMOVED AND REPLACED WHENEVER THE ENGINEER DETERMINES THAT THEY HAVE DETERIORATED AND LOST THEIR EFFECTIVENESS.

NO SEPARATE PAYMENT WILL BE MADE FOR THIS WORK AND THE ENTIRE COST OF THIS WORK SHALL BE INCLUDED IN THE UNIT CONTRACT PRICE BID FOR THE SEVERAL PAY ITEMS.

TEMPORARY DRAINAGE AT END BENT

BAR TYPES		BILL OF MATERIAL				
		END BENT #2				
BAR	NUM	SZ	TYP	LENGTH	WEIGHT	
B1	10	29	1	14400	729	
B2	2	16	STR	13700	43	
B3	8	13	STR	7220	57	
B4	12	13	STR	880	10	
B5	15	13	STR	1460	22	
B6	5	13	STR	3080	15	
H1	24	16	4	2100	78	
H2	22	16	5	2780	95	
K1	24	13	STR	7220	172	
K2	8	16	STR	860	11	
S1	57	16	2	2460	218	
S2	57	16	3	1160	103	
S3	20	13	6	1980	39	
U1	40	13	7	1120	45	
U2	19	13	7	1800	34	
V1	80	16	STR	2560	318	
V2	22	16	STR	3020	103	
V3	26	16	STR	2880	116	
REINFORCING STEEL				KG.	2,208	
CLASS A CONCRETE BREAKDOWN						
POUR #1 (CAP & LOWER WINGS)				12.7	m ³	
POUR #2 (BACKWALL & UPPER WINGS)				10.7	m ³	
TOTAL				23.4	m ³	
HP 310 X 79 STEEL PILES						
NO. 10				METERS	160.0	

ALL BAR DIMENSIONS ARE OUT TO OUT.



PILE SPLICE DETAILS

* POSITION OF PILE DURING WELDING.

PROJECT NO. R-2206C
 LINCOLN-CATAWBA COUNTY
 STATION: 237+97.199 -L-

SHEET 3 OF 3

STATE OF NORTH CAROLINA
 DEPARTMENT OF TRANSPORTATION
 RALEIGH

SUBSTRUCTURE
 END BENT #2
 RIGHT LANE

REVISIONS

NO.	BY:	DATE:	NO.	BY:	DATE:
1			3		
2			4		

SHEET NO.
 S-247
 TOTAL SHEETS
 374



DRAWN BY: T.L. AVERETTE DATE: 10-03
 CHECKED BY: W.D. CRUTCHER DATE: 02-03