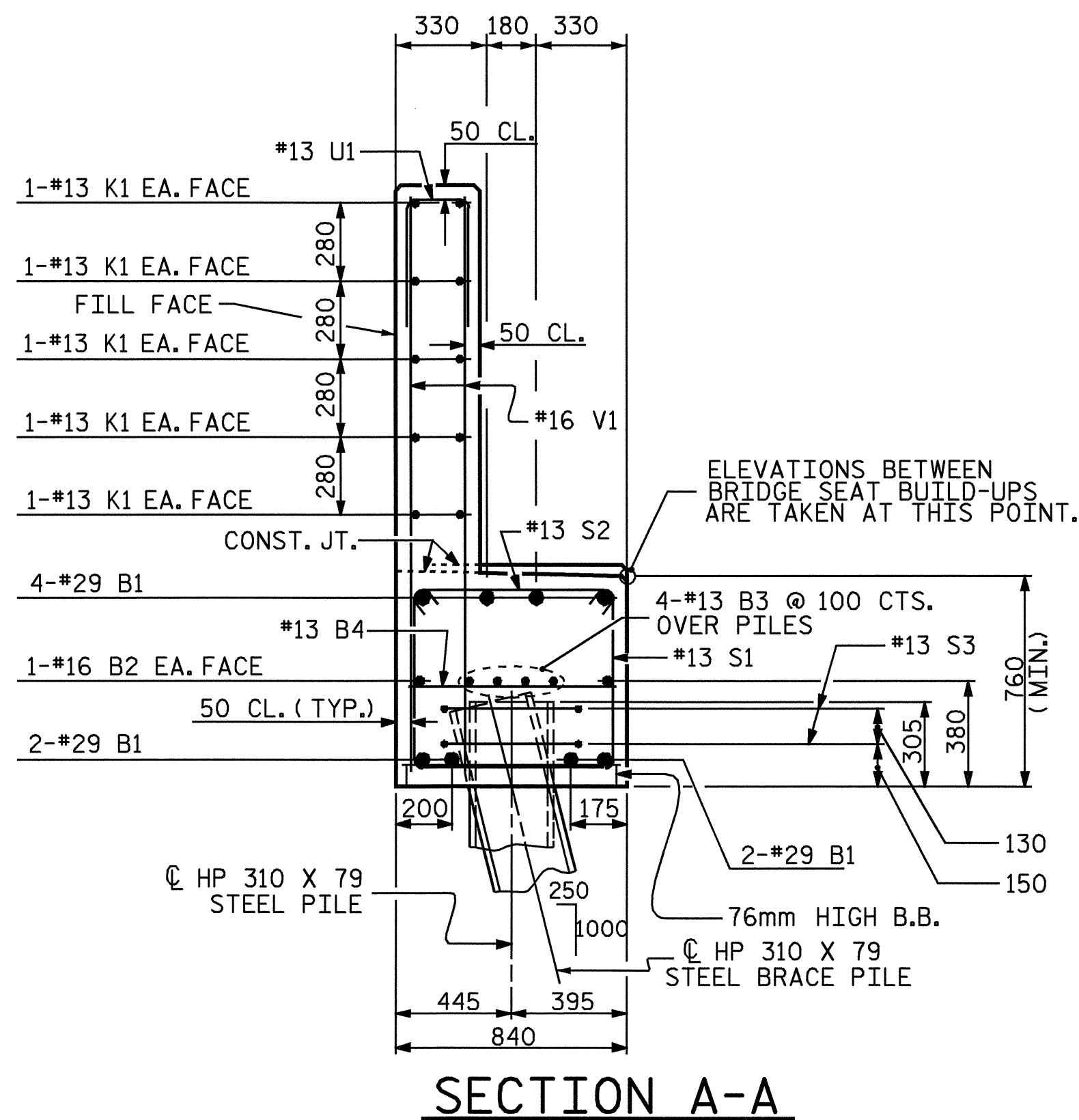


BAGGED STONE AND PIPE SHALL BE PLACED IMMEDIATELY AFTER COMPLETION OF END BENT EXCAVATION. PIPE MAY BE EITHER CONCRETE, CORRUGATED STEEL, CORRUGATED ALUMINUM ALLOY, OR CORRUGATED PLASTIC. PERFORATED PIPE WILL NOT BE ALLOWED.

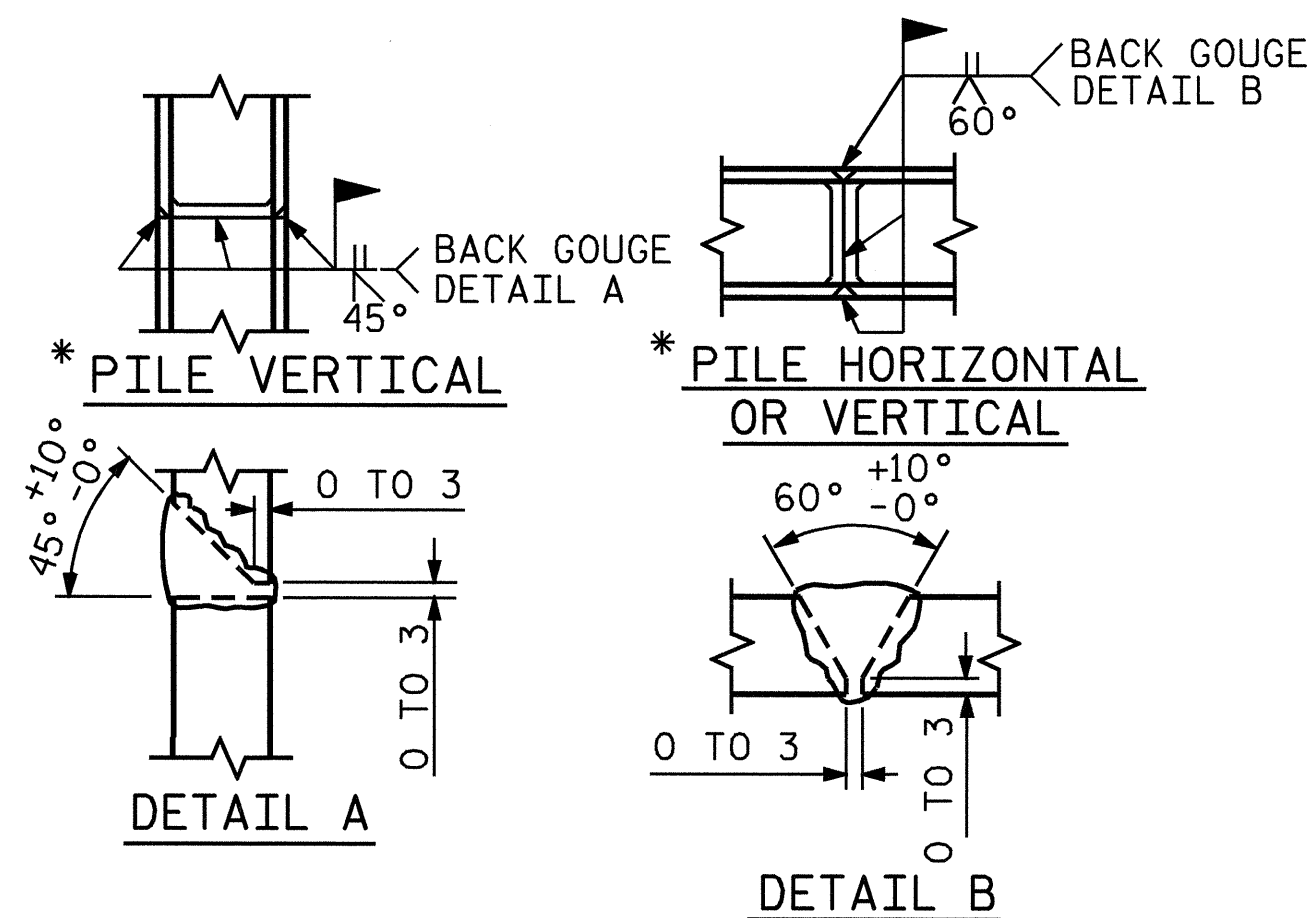
BAGGED STONE SHALL REMAIN IN PLACE UNTIL THE ENGINEER DIRECTS THAT IT BE REMOVED. THE CONTRACTOR SHALL REMOVE AND DISPOSE OF SILT ACCUMULATIONS AT BAGGED STONE WHEN SO DIRECTED BY THE ENGINEER. BAGS SHALL BE REMOVED AND REPLACED WHENEVER THE ENGINEER DETERMINES THAT THEY HAVE DETERIORATED AND LOST THEIR EFFECTIVENESS.

NO SEPARATE PAYMENT WILL BE MADE FOR THIS WORK AND THE ENTIRE COST OF THIS WORK SHALL BE INCLUDED IN THE UNIT CONTRACT PRICE BID FOR THE SEVERAL PAY ITEMS.

TEMPORARY DRAINAGE AT END BENT

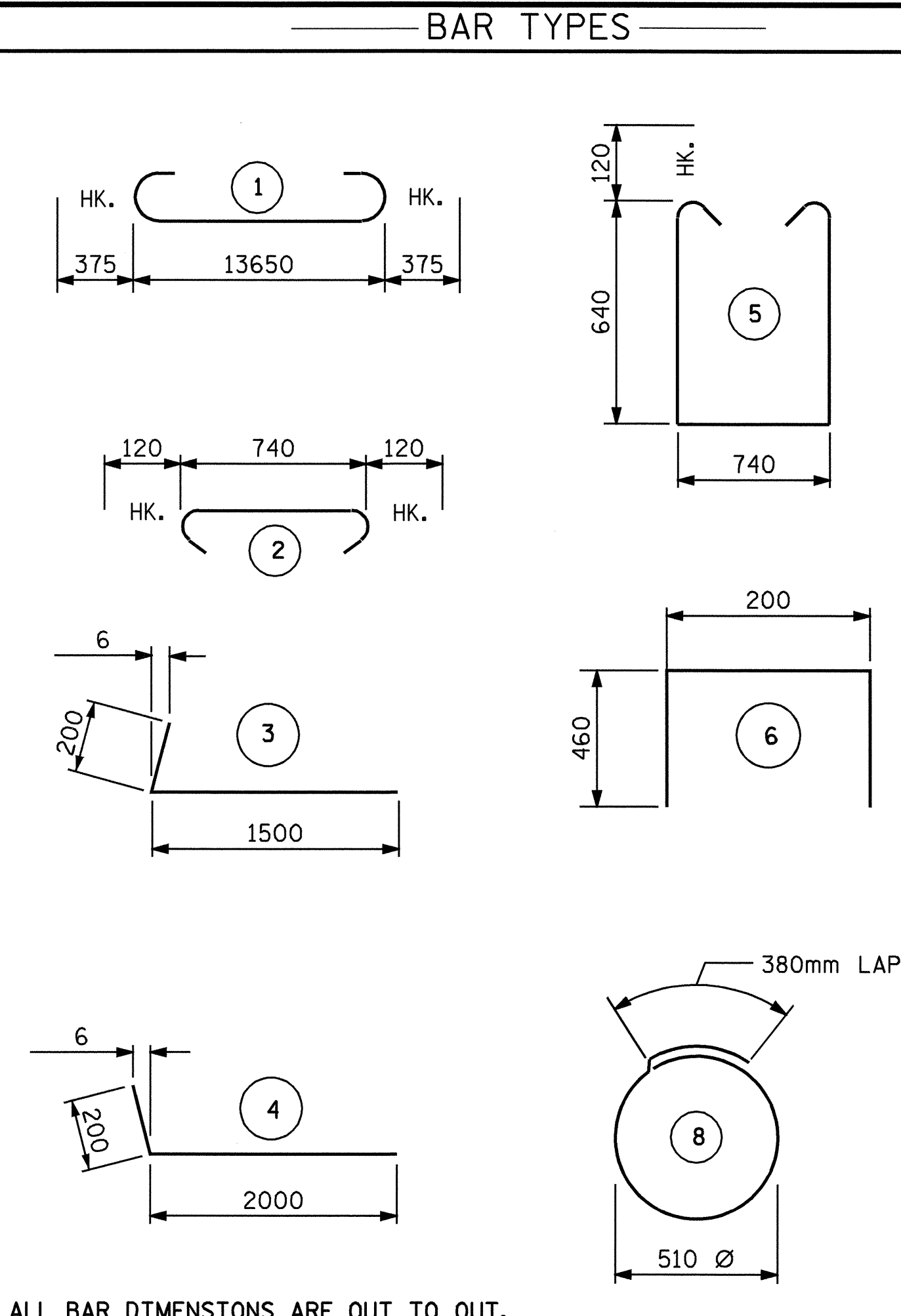


SECTION A-A



* POSITION OF PILE DURING WELDING.

PILE SPLICE DETAILS



ALL BAR DIMENSIONS ARE OUT TO OUT.

BILL OF MATERIAL

END BENT #1					
BAR	NO.	SIZE	TYPE	LENGTH	WEIGHT
B1	8	#29	1	14400	583
B2	2	#16	STR	13700	43
B3	8	#13	STR	7220	57
B4	12	#13	STR	740	9
H1	20	#16	4	2200	68
H2	20	#16	3	1700	53
K1	20	#13	STR	7220	144
K2	8	#13	STR	860	7
S1	42	#13	5	2260	94
S2	42	#13	2	980	41
S3	18	#13	8	1980	35
U1	40	#13	6	1120	45
V1	80	#16	STR	1960	243
V2	22	#16	STR	2220	76
V3	20	#16	STR	2320	72
REINFORCING STEEL				=	1570 KG.
CLASS A CONCRETE BREAKDOWN					
POUR #1 (CAP, LOWER PART OF WINGS)				9.8	CU. M.
POUR #2 (BACKWALL AND UPPER PART OF WING)				7.3	CU. M.
TOTAL				17.1	CU. M.
HP 310 X 79 STEEL PILES					
NO. 9					METERS 108.0

PROJECT NO. R-2206C
 LINCOLN- CATAWBA COUNTY
 STATION: 245+91.502 -L-

SHEET 3 OF 3

STATE OF NORTH CAROLINA
 DEPARTMENT OF TRANSPORTATION
 RALEIGH
 SUBSTRUCTURE
 END BENT #1
 LEFT LANE



EMM
 9/10/09

REVISIONS						SHEET NO.
NO.	BY:	DATE:	NO.	BY:	DATE:	TOTAL SHEETS
1			3			374
2			4			

DRAWN BY : ZION J. RORIE DATE : 6/22/04
 CHECKED BY : M. RORIE DATE : 7/6/04