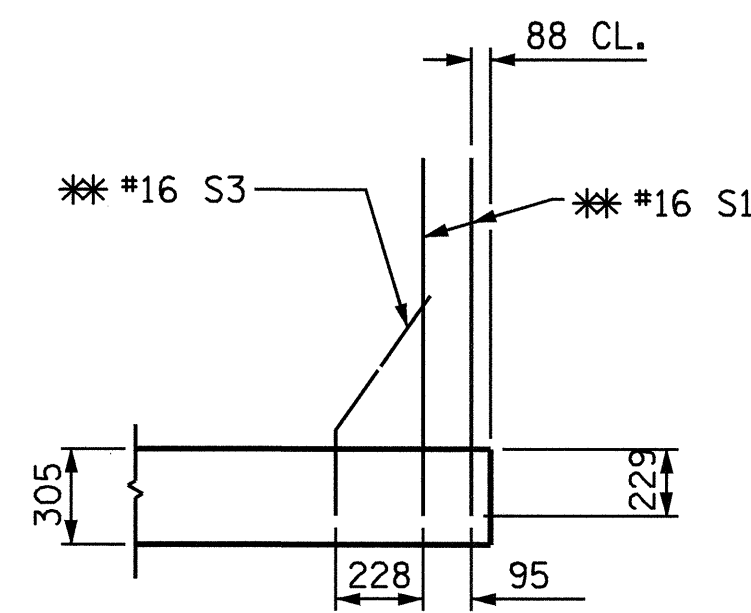
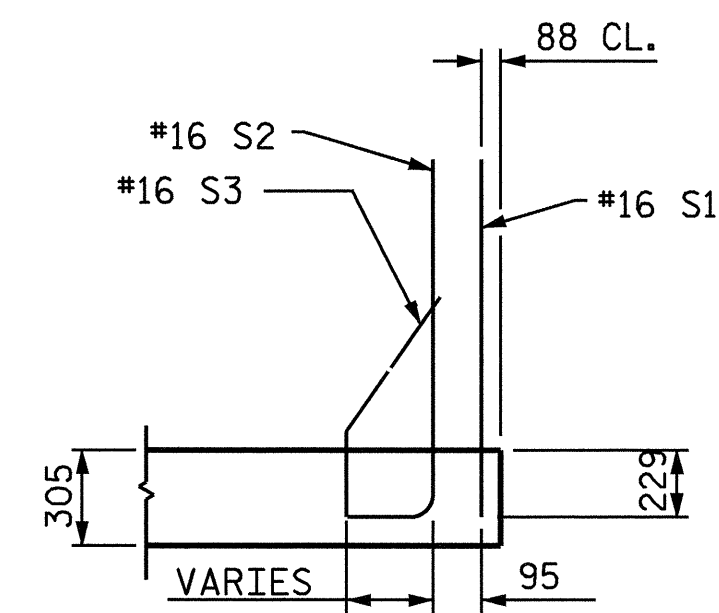


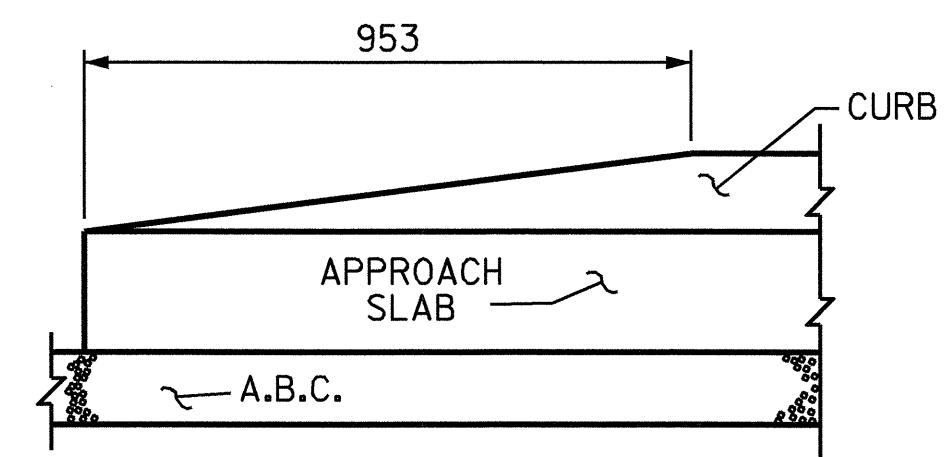
SECTION N-N



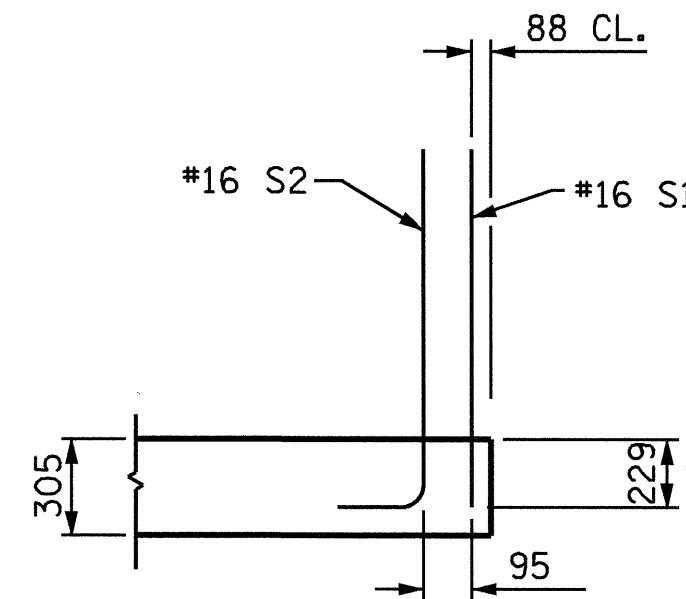
SECTION K-K
** ADHESIVELY ANCHORED



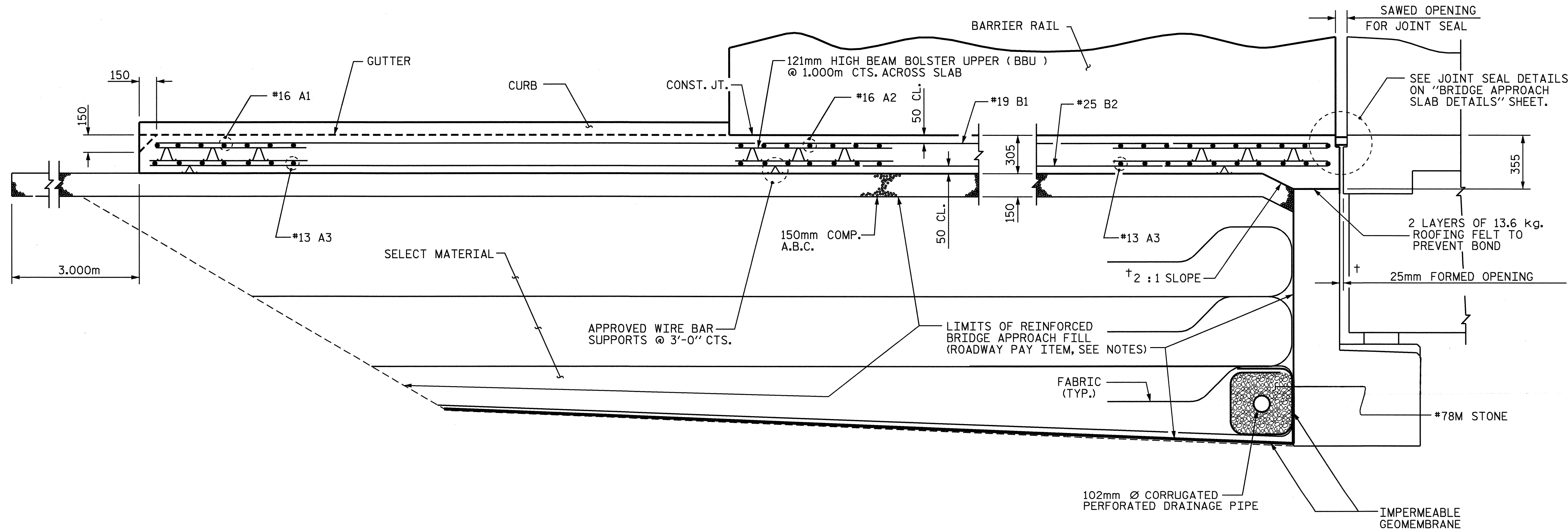
SECTION L-L



END OF CURB WITHOUT
SHOULDER BERM GUTTER
CURB DETAILS



SECTION M-M



SECTION THRU SLAB

†NORMAL TO END BENT

NOTES

THE COST OF THE BARRIER RAIL ON THE APPROACH SLAB SHALL BE INCLUDED IN THE LUMP SUM CONTRACT PRICE BID FOR BRIDGE APPROACH SLABS.

APPROACH SLAB SHALL NOT BE CONSTRUCTED PRIOR TO COMPLETION OF THE BRIDGE DECK.

FOR REINFORCED BRIDGE APPROACH FILL INCLUDING FABRIC, IMPERMEABLE GEOMEMBRANE, 102mm Ø DRAINAGE PIPE, #78M STONE, AND SELECT MATERIAL, SEE ROADWAY PLANS.

TEMPORARY DRAINAGE AND TEMPORARY BERM AND SLOPE DRAINS WILL BE PAID FOR UNDER THE LUMP SUM PRICE FOR BRIDGE APPROACH SLAB.

AREA BETWEEN THE WINGWALL AND APPROACH SLAB SHALL BE GRADED TO DRAIN THE WATER AWAY FROM THE FILL FACE OF THE BRIDGE.

THE 150mm COMP. A.B.C. SHALL EXTEND 3m BEYOND THE END OF THE APPROACH SLAB AND 300mm OUTSIDE OF EACH EDGE OF THE SLAB.

THE CONTRACTOR MAY USE 100mm TYPE B-25.0B ASPHALT CONCRETE COURSE IN LIEU OF 150mm COMP. A.B.C. IF THIS OPTION IS USED, THE BASE COURSE SHALL EXTEND 300mm BEYOND THE END OF THE APPROACH SLAB AND THE WIDTH SHALL BE THE SAME AS THAT OF THE APPROACH SLAB.

THE CONTRACTOR MAY USE 125mm CLASS "A" CONCRETE BASE IN LIEU OF 150mm COMP. A.B.C. IF THIS OPTION IS USED, THE CONCRETE BASE SHALL EXTEND 300mm BEYOND THE END OF THE APPROACH SLAB AND THE WIDTH SHALL BE THE SAME AS THAT OF THE APPROACH SLAB. THE CONCRETE SHALL BE FINISHED TO A SMOOTH SURFACE AND A LAYER OF 13.6 kg. ROOFING FELT SHALL BE PLACED BETWEEN THE CONCRETE BASE AND THE APPROACH SLAB TO PREVENT BOND. THE APPROACH SLAB SHALL NOT BE CAST UNTIL THE CONCRETE BASE HAS REACHED AN AGE OF THREE CURING DAYS.

THE JOINT SHALL BE SAWED PRIOR TO THE CASTING OF THE BARRIER RAIL.

WITH EVAZOTE JOINT SEAL

FOR EVAZOTE JOINT SEALS, SEE SPECIAL PROVISIONS.

THE NOMINAL UNCOMPRESSED SEAL WIDTH OF THE EVAZOTE JOINT SEAL SHALL BE 64mm.

FOR ELASTOMERIC CONCRETE, SEE SPECIAL PROVISIONS.

**BILL OF MATERIAL
FOR ONE APPROACH SLAB
(2 REQ'D)**

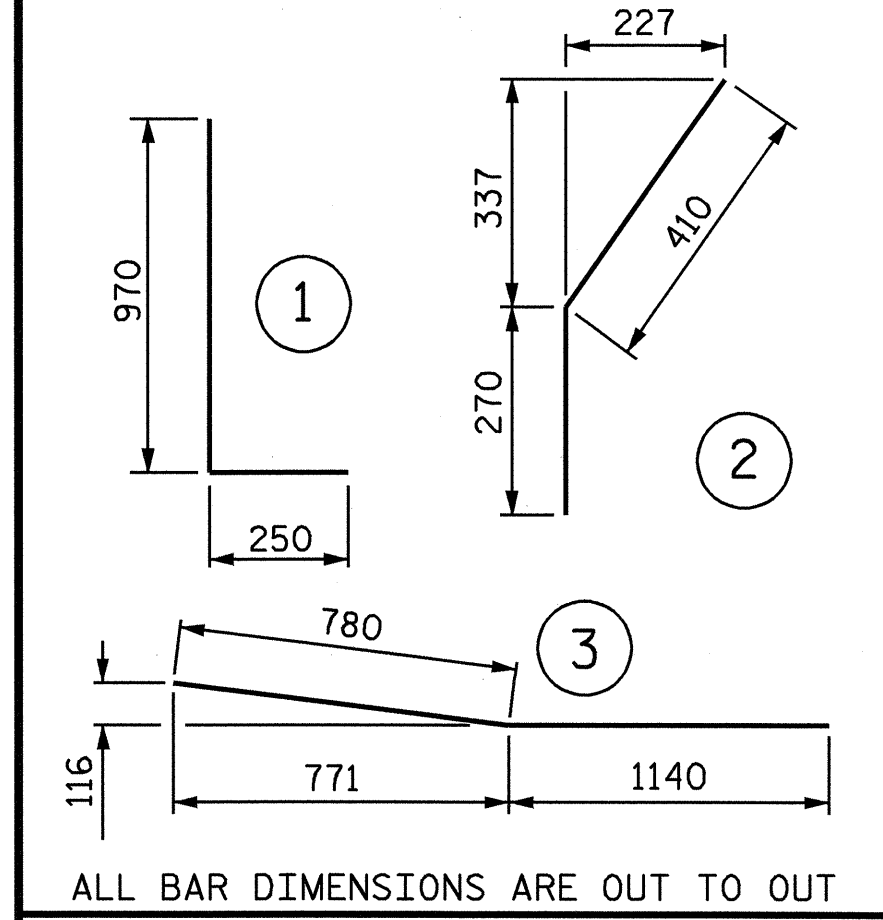
BAR	NO.	SIZE	TYPE	LENGTH	WEIGHT
*A1	26	#16	STR	11540	466
*A2	24	#16	STR	11680	435
A3	100	#13	STR	6120	608
*B1	78	#19	STR	7380	1287
B2	78	#25	STR	7520	2330
*B3	14	#16	STR	3560	77
*B4	2	#16	3	1920	6
*S1	58	#16	STR	980	88
*S2	42	#16	1	1220	80
*S3	20	#16	2	680	21

REINFORCING STEEL	kg.	2938
*EPOXY COATED REINFORCING STEEL	kg.	2460

CLASS AA CONCRETE BREAKDOWN

POUR 1 SLAB & CURB	C. M.	27.6
POUR 2 RAIL	C. M.	1.6
CLASS AA CONCRETE	C. M.	29.2

BAR TYPES



SPLICE CHART

BAR	LENGTH
#13 A3	540

PROJECT NO. R-2206C
 LINCOLN-CATAWBA COUNTY
 STATION: 245+91.502 -L-

SHEET 2 OF 4

STATE OF NORTH CAROLINA
 DEPARTMENT OF TRANSPORTATION
 RALEIGH
 STANDARD
 BRIDGE APPROACH SLAB
 FOR RIGID PAVEMENT
 WITH BARRIER RAIL
 LEFT LANE

REVISIONS						TOTAL SHEETS
NO.	BY:	DATE:	NO.	BY:	DATE:	
1			3			374
2			4			374

SEAL 022516
 ENGINEER
 EMILY E. MURPHY
 9/10/04

ASSEMBLED BY : ZION J. RORIE	DATE : 7/27/04
CHECKED BY : W. D. CRUTCHER	DATE : 7/29/04
DRAWN BY : RWW	8/01
CHECKED BY : LES	8/01
ADDED	12/01
REV.	5/7/03
RWW/JTE	