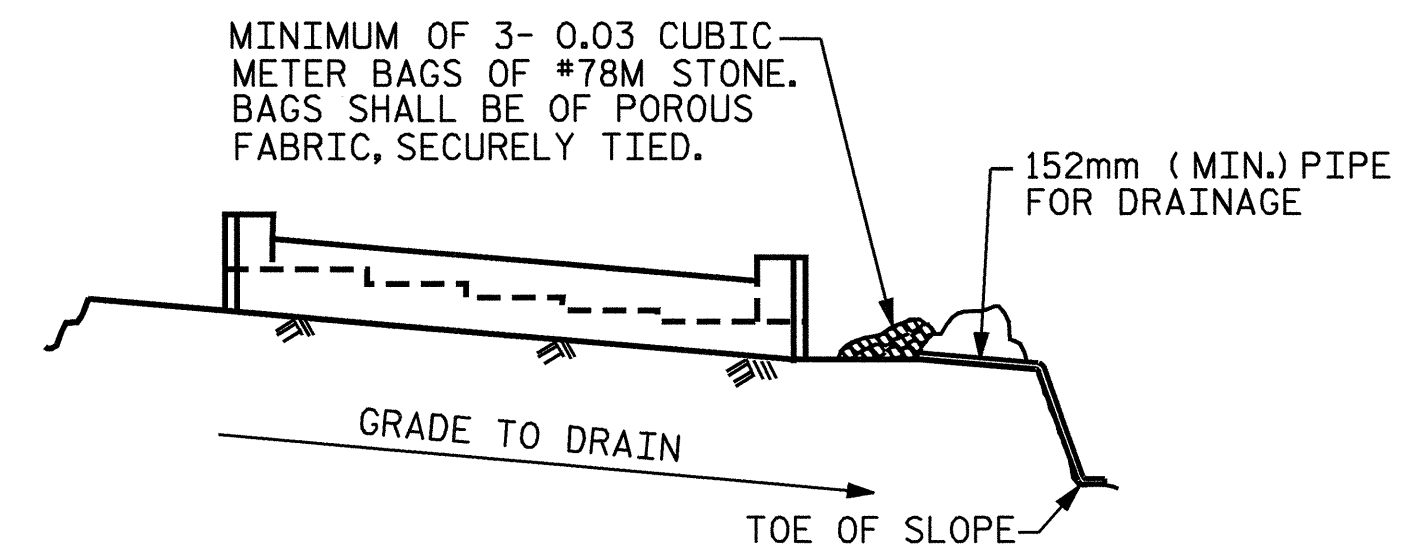


SECTION A-A

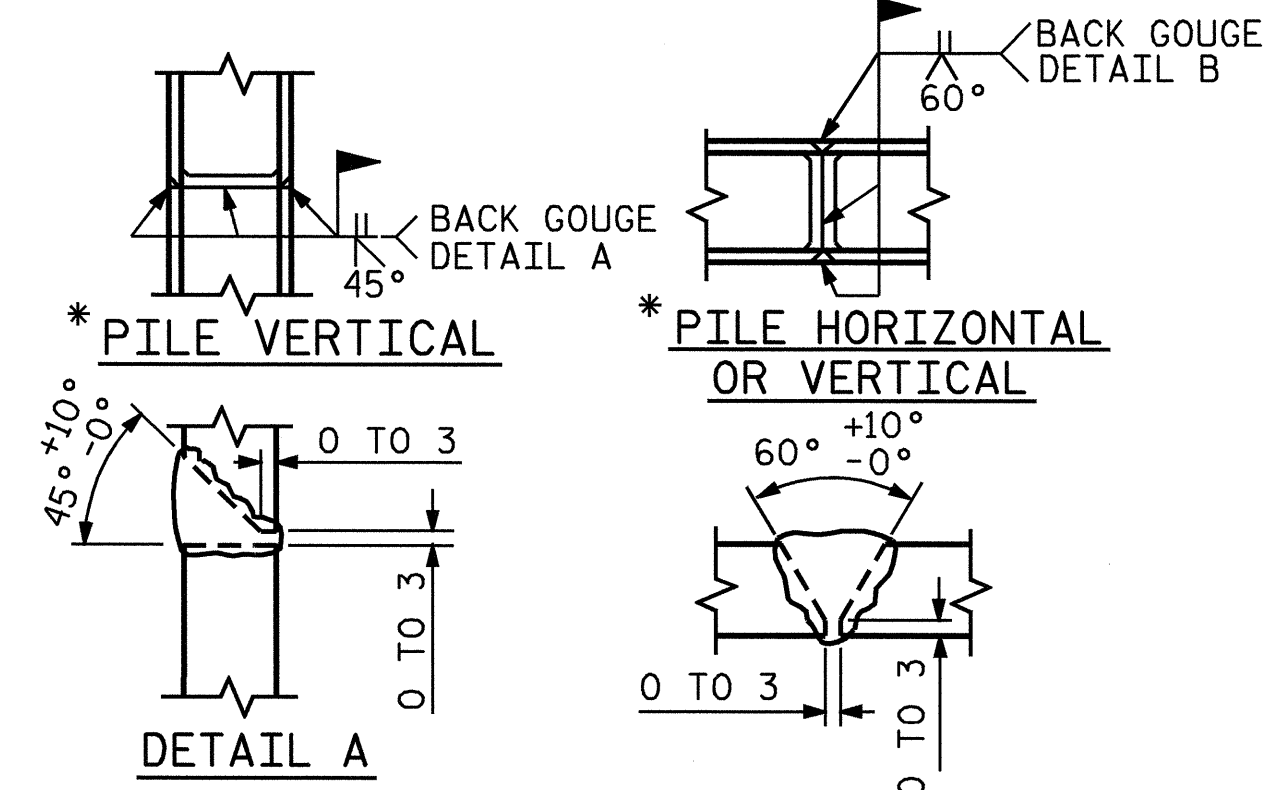


BAGGED STONE AND PIPE SHALL BE PLACED IMMEDIATELY AFTER COMPLETION OF END BENT EXCAVATION. PIPE MAY BE EITHER CONCRETE, CORRUGATED STEEL, CORRUGATED ALUMINUM ALLOY, OR CORRUGATED PLASTIC. PERFORATED PIPE WILL NOT BE ALLOWED.

BAGGED STONE SHALL REMAIN IN PLACE UNTIL THE ENGINEER DIRECTS THAT IT BE REMOVED. THE CONTRACTOR SHALL REMOVE AND DISPOSE OF SILT ACCUMULATIONS AT BAGGED STONE WHEN SO DIRECTED BY THE ENGINEER. BAGS SHALL BE REMOVED AND REPLACED WHENEVER THE ENGINEER DETERMINES THAT THEY HAVE DETERIORATED AND LOST THEIR EFFECTIVENESS.

NO SEPARATE PAYMENT WILL BE MADE FOR THIS WORK AND THE ENTIRE COST OF THIS WORK SHALL BE INCLUDED IN THE UNIT CONTRACT PRICE BID FOR THE SEVERAL PAY ITEMS.

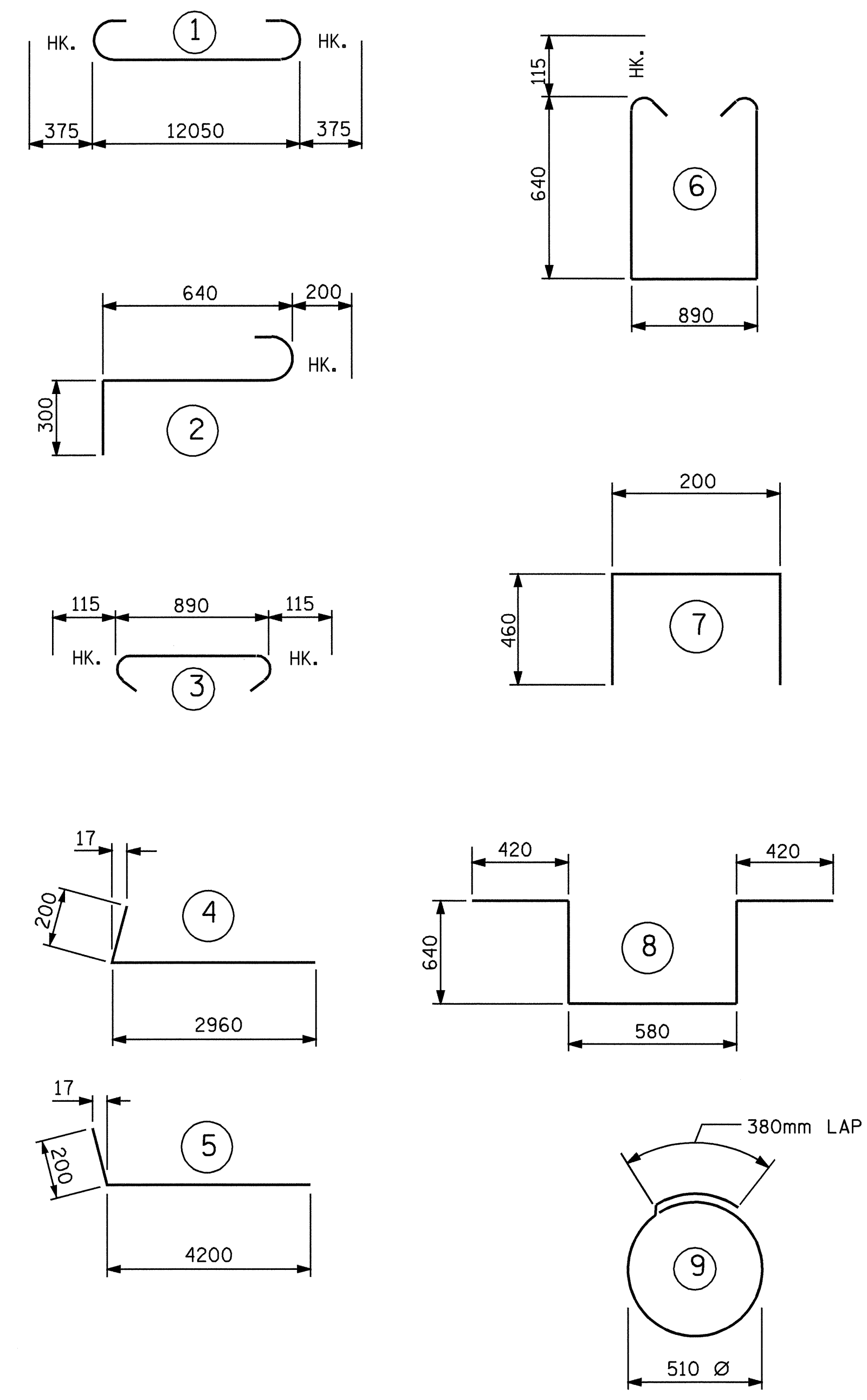
TEMPORARY DRAINAGE AT END BENT



PILE SPLICE DETAILS

* POSITION OF PILE DURING WELDING.

BAR TYPES



ALL BAR DIMENSIONS ARE OUT TO OUT.

BILL OF MATERIAL

END BENT NO. 1

BAR	NO.	SIZE	TYPE	LENGTH	WEIGHT
B1	10	29	1	12800	648
B2	2	16	STR	12080	37
B3	8	13	STR	6420	51
B4	10	13	STR	880	9
H1	22	16	5	4400	150
H2	24	16	4	3160	118
K1	28	13	STR	6420	179
K2	6	16	STR	840	8
S1	45	13	6	2400	107
S2	45	13	3	1120	50
S3	16	13	9	1980	31
S4	3	19	2	1140	8
S5	1	19	8	2700	6
U1	34	13	7	1120	38
V1	68	16	STR	2680	283
V2	18	16	STR	2940	82
V3	10	16	STR	2900	45
V4	10	16	STR	2860	44
V5	20	16	STR	3060	95
V6	10	16	STR	3040	47

REINFORCING STEEL 2036 kg

CLASS "A" CONCRETE BREAKDOWN

POUR #1 (CAP, WING BRACE PILE FTG. & LOWER WINGS)	11.2 CU. METER
POUR #2 (UPPER WINGS & BACKWALL)	12.5 CU. METER
CLASS "A" CONCRETE TOTAL	23.7 CU. METER

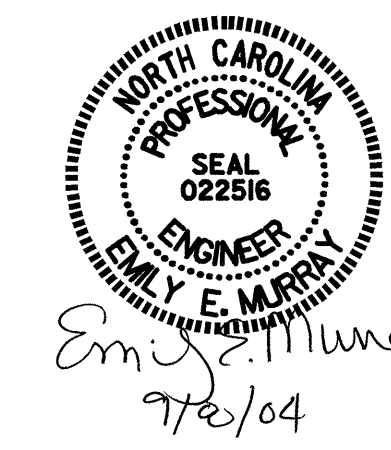
HP 310 X 79 STEEL PILES
NO. 9 90.0 METERS

PROJECT NO. R-2206C
LINCOLN-CATAWBA COUNTY
STATION: 195+74.885 -L-

SHEET 3 OF 3

STATE OF NORTH CAROLINA
DEPARTMENT OF TRANSPORTATION
RALEIGH

**SUBSTRUCTURE
END BENT #1**



REVISIONS					SHEET NO.
NO.	BY:	DATE:	NO.	BY:	DATE:
1			3		8-20
2			4		TOTAL SHEETS 374

DRAWN BY: PEGGY ADKINS DATE: 11-03
CHECKED BY: T. AVERETTE DATE: 1-04