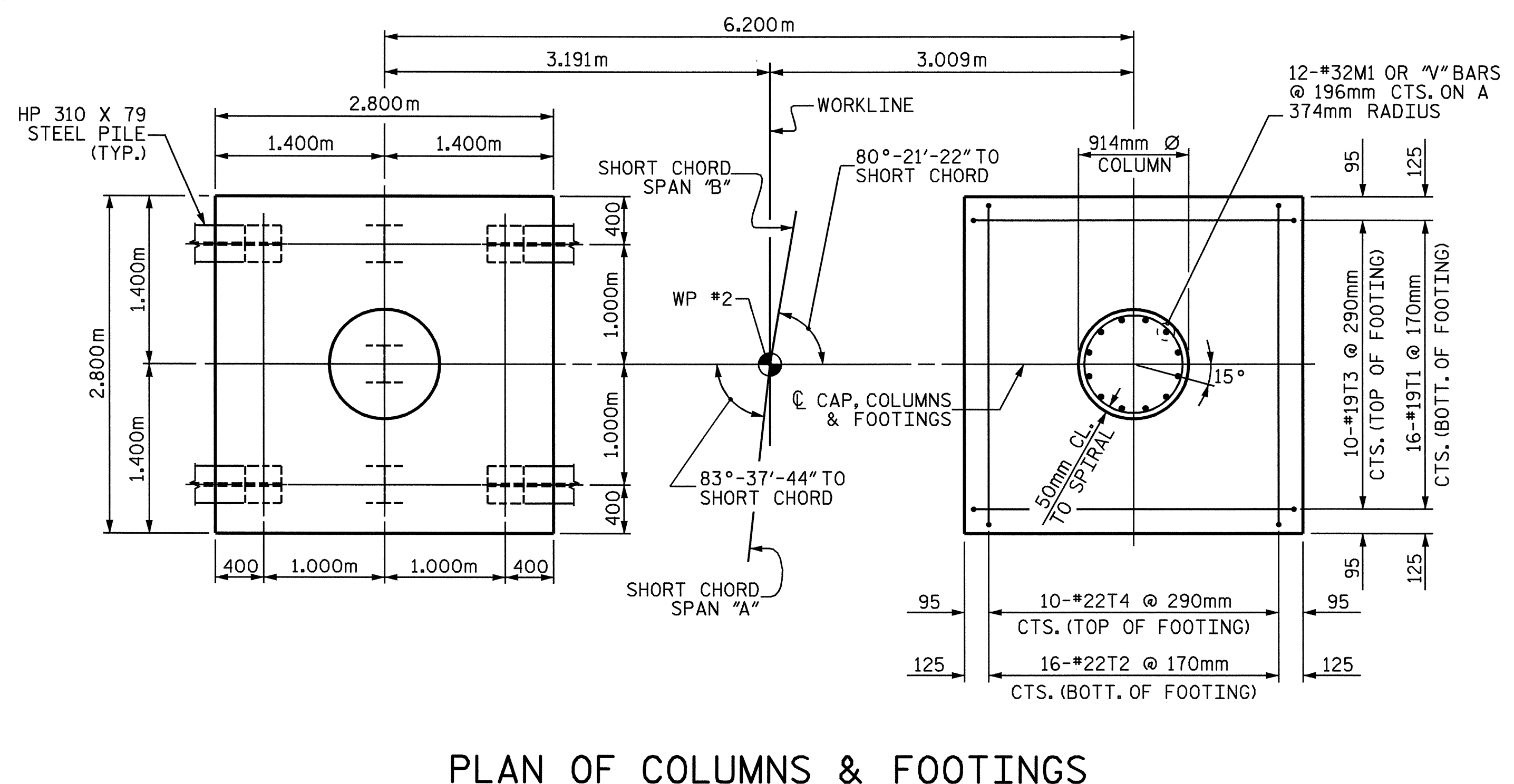
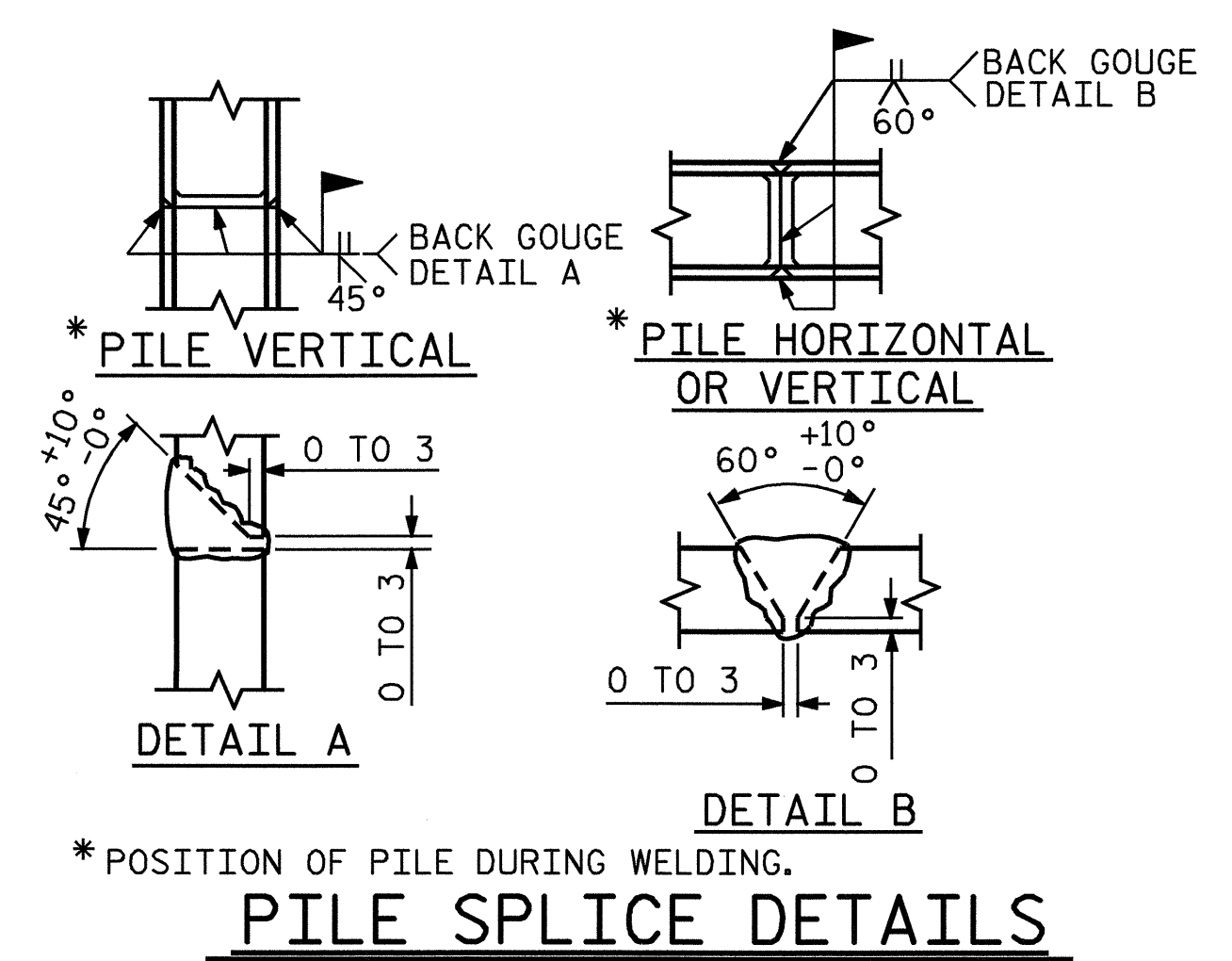


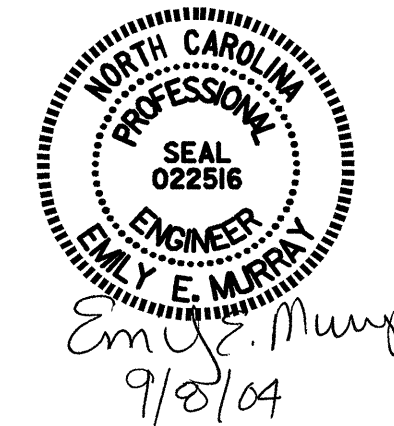
BILL OF MATERIAL					
BENT #1					
BAR	NO.	SIZE	TYPE	LENGTH	WEIGHT
B1	7	29	STR	9400	333
B2	7	29	1	10100	358
B3	8	16	STR	9400	117
B4	21	13	STR	2700	56
B5	7	13	STR	1140	8
M1	24	32	3	2860	440
S1	48	16	2	3840	286
T1	16	19	1	3100	111
T2	16	22	1	3200	156
T3	10	19	STR	2700	60
T4	10	22	STR	2700	82
U1	52	13	4	1920	99
U2	3	13	4	2180	7
U3	3	13	4	2240	7
V1	12	32	3	7280	559
V2	12	32	3	6940	533
REINFORCING STEEL				KG	3212
SP-1	1	**	5	211480	210
SP-2	1	**	5	198900	198
SPIRAL COLUMN REINF. STEEL				KG	408
CLASS "A" CONCRETE BREAKDOWN					
POUR #1 FOOTINGS				m <sup>3</sup>	14.4
POUR #2 COLUMNS				m <sup>3</sup>	7.6
POUR #3 CAP				m <sup>3</sup>	15.8
CLASS "A" CONCRETE TOTAL				m <sup>3</sup>	37.8
FOUNDATION EXCAVATION				LUMP SUM	
HP 310 X 79 STEEL PILES				LIN. M.	91.7
NO. 14					
* THE SPIRAL REINFORCING STEEL SHALL BE W20 OR D-20 COLD DRAWN WIRE OR #13 PLAIN OR DEFORMED BAR.					



PROJECT NO. R-2206C  
 LINCOLN-CATAWBA COUNTY  
 STATION: 195+74.885 -L-  
 SHEET 2 OF 2

STATE OF NORTH CAROLINA DEPARTMENT OF TRANSPORTATION RALEIGH					
SUBSTRUCTURE BENT #1					
REVISIONS					
NO.	BY:	DATE:	NO.	BY:	DATE:
1			3		
2			4		

SHEET NO. 8-22  
TOTAL SHEETS 3-74



DRAWN BY: W.D. CRUTCHER DATE: 01-04  
 CHECKED BY: M.D. PISO DATE: 02-04