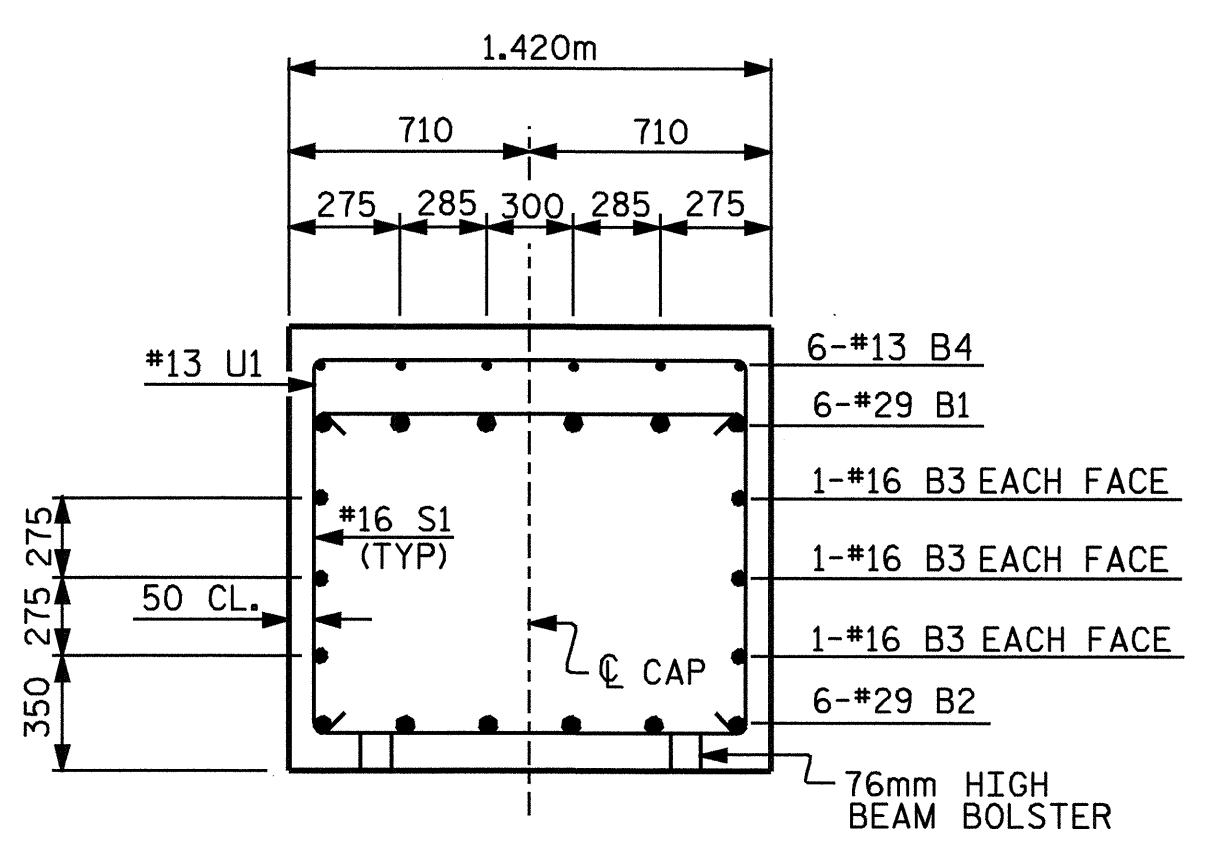
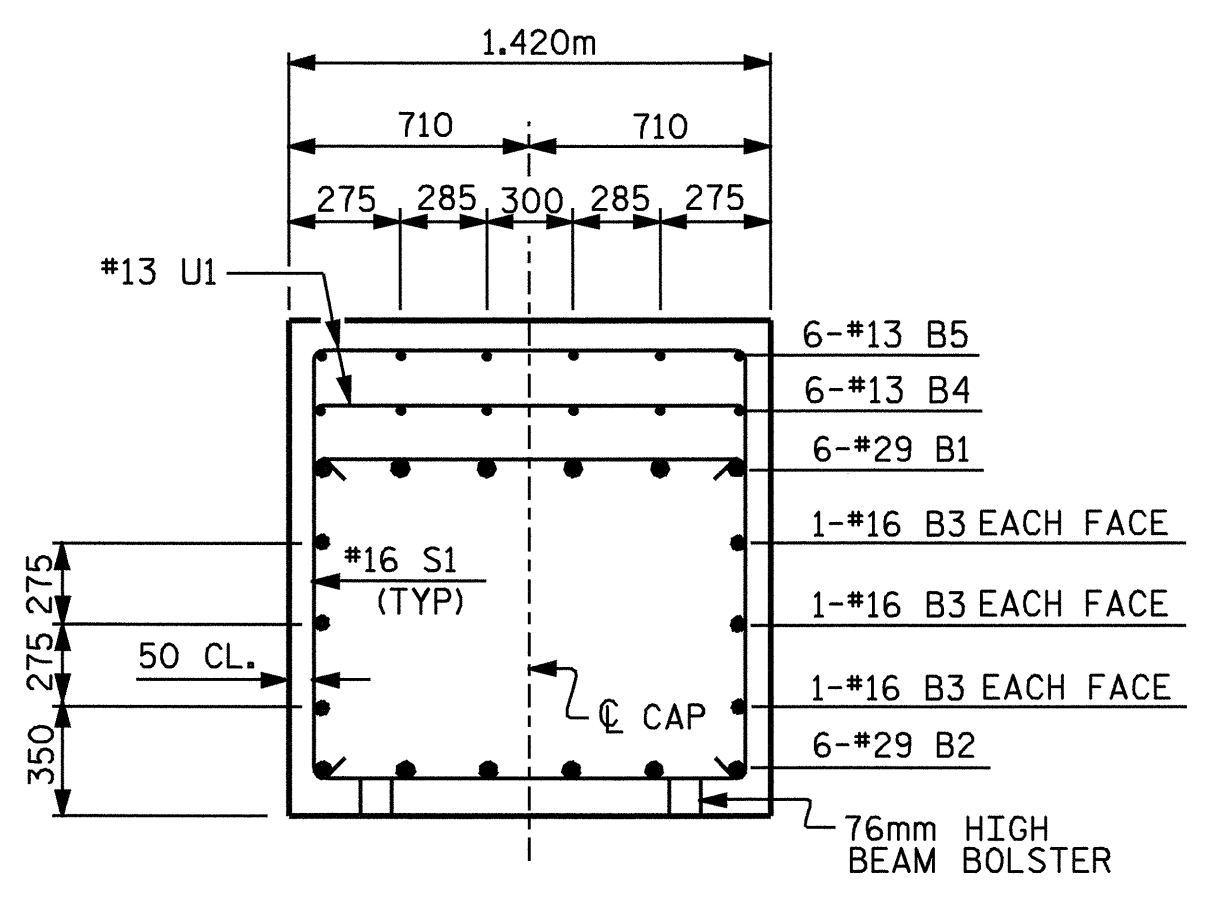


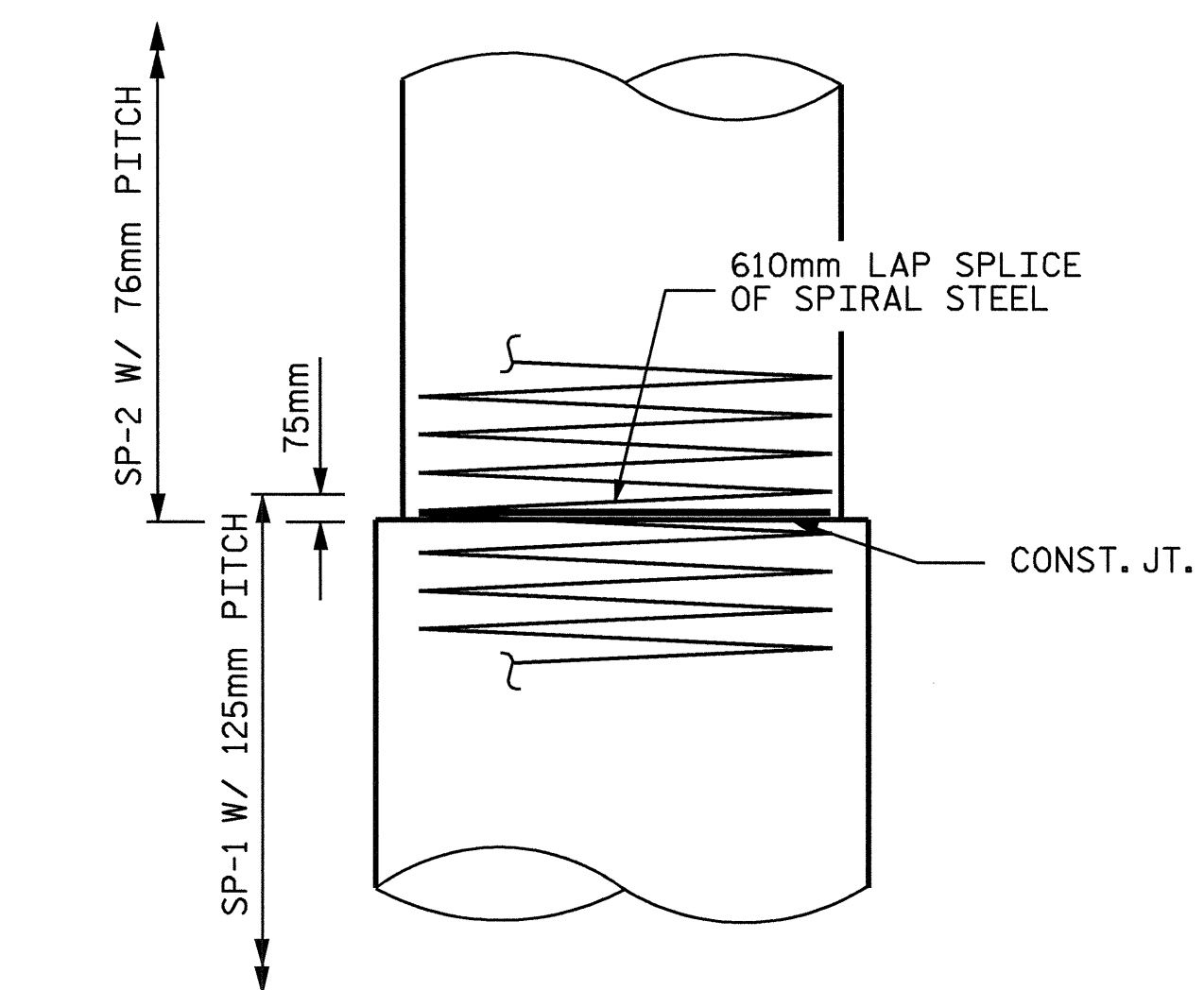
SECTION A-A



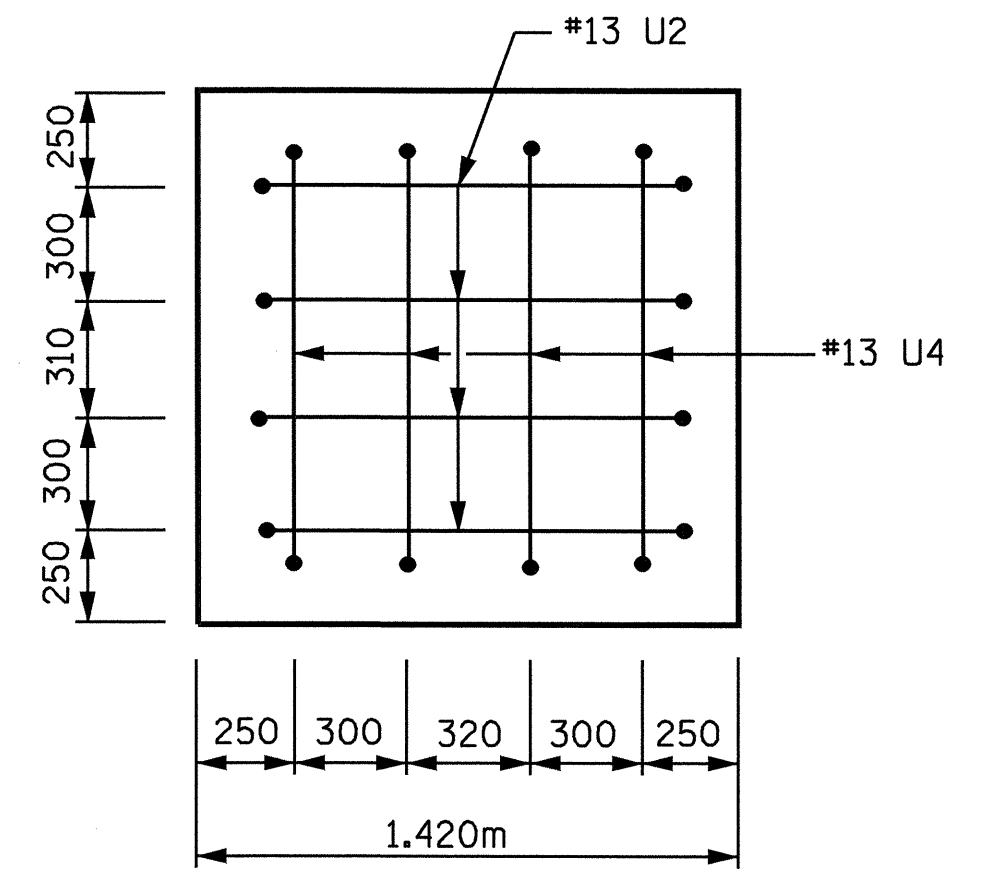
SECTION B-B



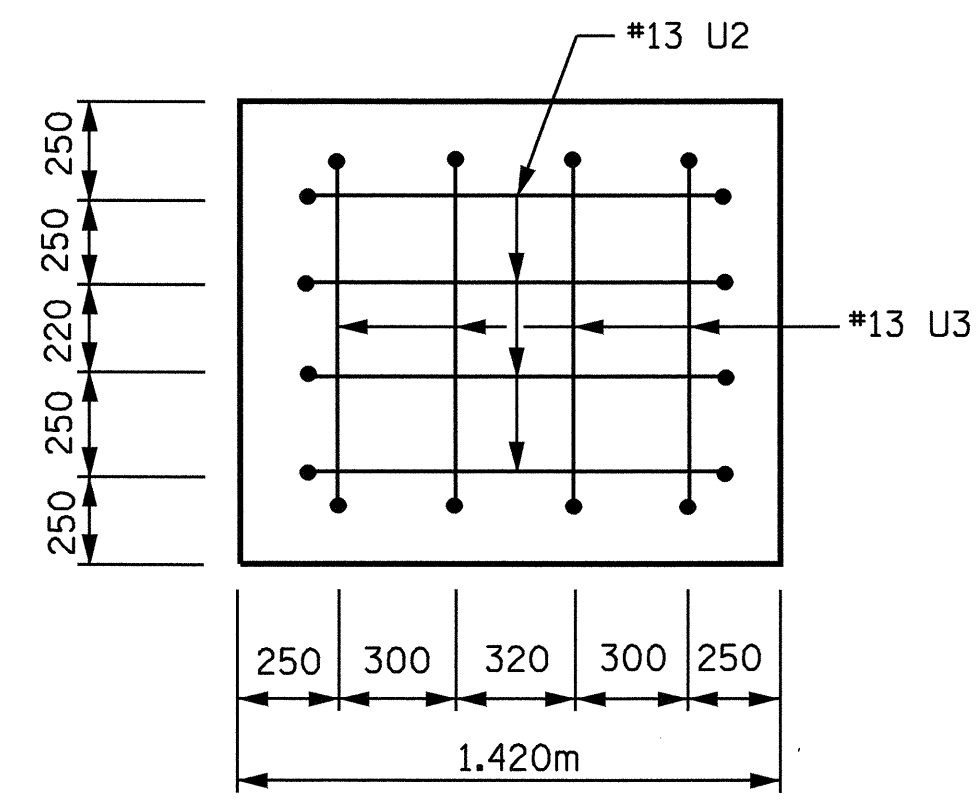
SECTION C-C



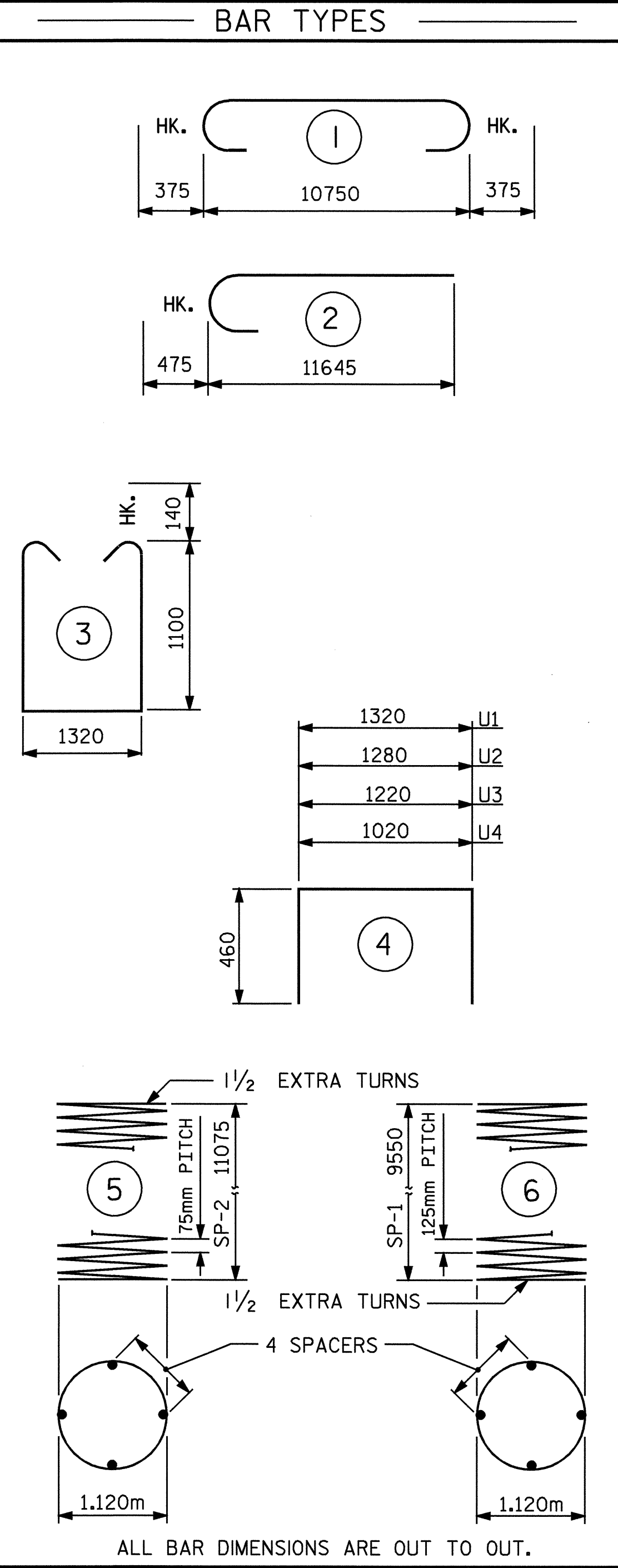
CONST. JT. DETAIL



LEFT END VIEW



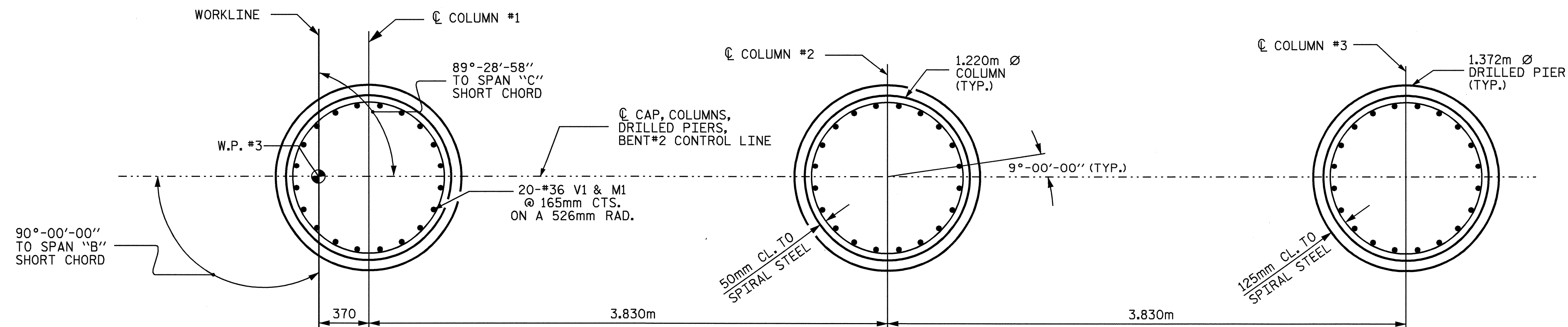
RIGHT END VIEW



ALL BAR DIMENSIONS ARE OUT TO OUT.

BILL OF MATERIAL							
BENT #2							
BAR NO.	SIZE	TYPE	LENGTH	WEIGHT			
B1	6 29	1	11500	350			
B2	6 29	STR	10800	328			
B3	6 16	STR	10800	101			
B4	6 13	STR	5900	35			
B5	6 13	STR	1100	7			
S1	36 16	3	3800	212			
U1	49 13	4	2240	109			
U2	8 13	4	2200	17			
U3	4 13	4	2140	9			
U4	4 13	4	1940	8			
V1	60 36	2	12120	5750			
M1	60 36	STR	12820	6082			
REINFORCING STEEL			KG	13008			
SP-1	3 *	6	270620	1260			
SP-2	3 **	5	519000	1548			
SPIRAL COL. REINF. STEEL			KG	2808			
CLASS "A" CONCRETE							
POUR #2 COLUMNS			m ³	38.6			
POUR #3 CAP			m ³	20.2			
TOTAL CLASS "A" CONCRETE			m ³	58.8			
DRILLED PIER CONCRETE							
POUR #1 DRILLED PIERS			m ³	43.0			
1372mm Ø DRILLED PIERS NOT IN SOIL				METERS	10.1		
1372mm Ø DRILLED PIERS IN SOIL				METERS	19.0		
CSL TUBES			METERS	126.6			

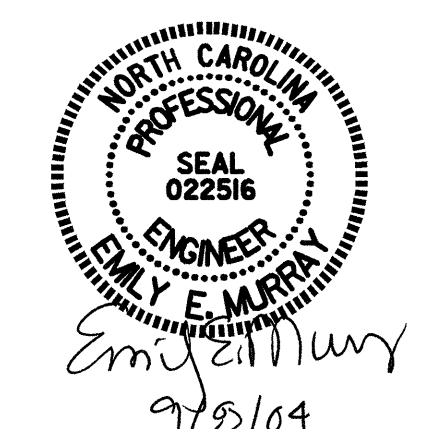
** THE SP-2 SPIRAL REINFORCING STEEL SHALL BE W20 OR D-20 COLD DRAWN WIRE OR #13 PLAIN OR DEFORMED BAR.
 * THE SP-1 SPIRAL REINFORCING STEEL SHALL BE W31 OR D-31 COLD DRAWN WIRE OR #16 PLAIN OR DEFORMED BAR.



PLAN OF COLUMNS & DRILLED PIERS

PROJECT NO. R-2206C
 LINCOLN-CATAWBA COUNTY
 STATION: 199+48.00 -L-

SHEET 2 OF 2



STATE OF NORTH CAROLINA
 DEPARTMENT OF TRANSPORTATION
 RALEIGH
 SUBSTRUCTURE
 BENT #2
 RIGHT LANE

REVISIONS						SHEET NO.
NO.	BY:	DATE:	NO.	BY:	DATE:	390
1			3			TOTAL SHEETS 374
2			4			

DRAWN BY : C.MILLER DATE : 04-04
 CHECKED BY : W.D.CRUTCHER DATE : 04-04