
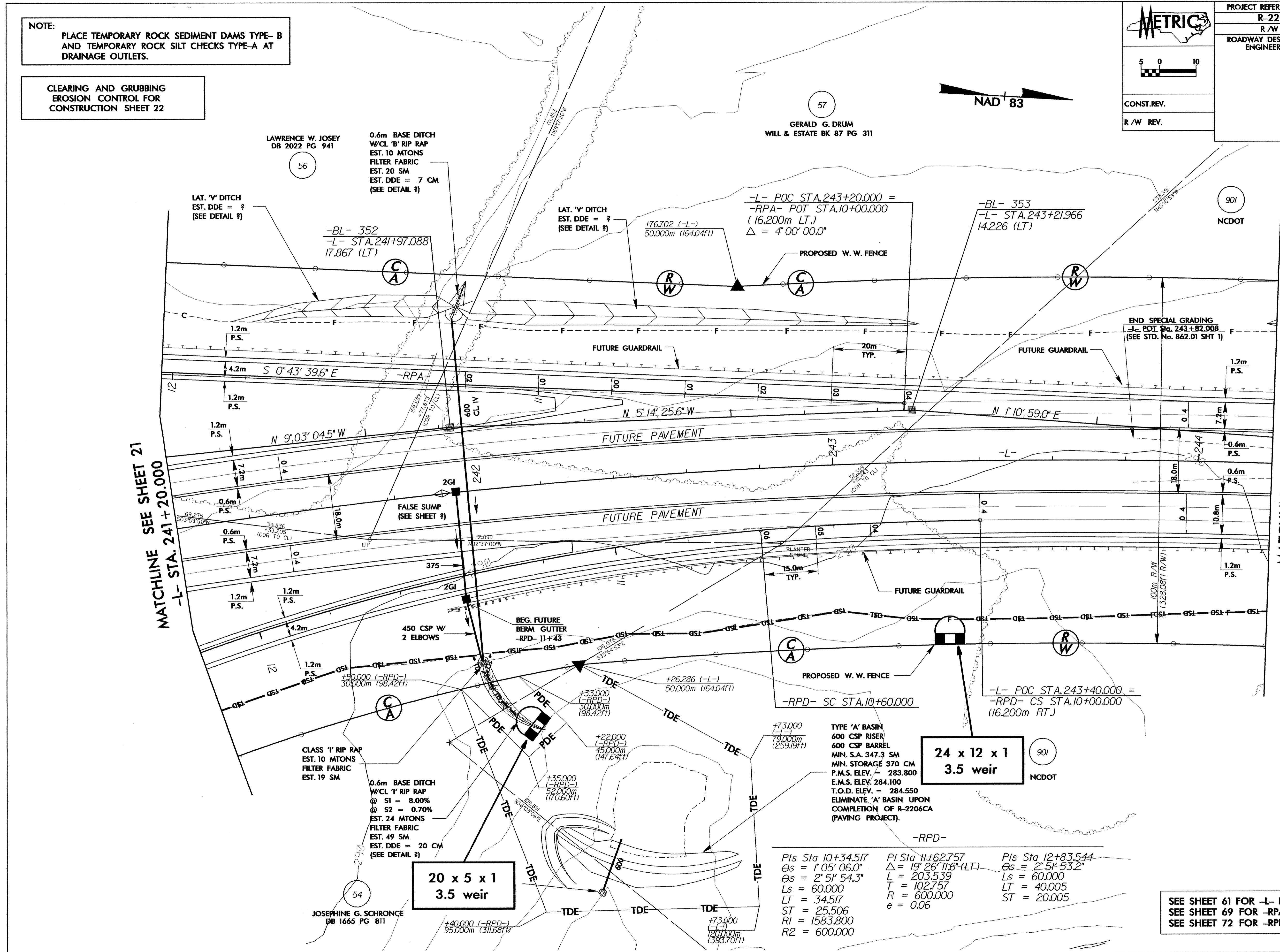


NOTE:  
PLACE TEMPORARY ROCK SEDIMENT DAMS TYPE-B  
AND TEMPORARY ROCK SILT CHECKS TYPE-A AT  
DRAINAGE OUTLETS.

CLEARING AND GRUBBING  
EROSION CONTROL FOR  
CONSTRUCTION SHEET 22

 5 0 10 CONST. REV. R/W REV.	PROJECT REFERENCE NO. R-2206C	SHEET NO. EC-22/CONST.22
	ROADWAY DESIGN ENGINEER	HYDRAULICS ENGINEER



MATCHLINE SEE SHEET 21  
-L- STA. 241+20.000

MATCHLINE SEE SHEET 23  
-L- STA. 244+20.00

LAWRENCE W. JOSEY  
DB 2022 PG 941

0.6m BASE DITCH  
W/CL 'B' RIP RAP  
EST. 10 MTONS  
FILTER FABRIC  
EST. 20 SM  
EST. DDE = 7 CM  
(SEE DETAIL ?)

GERALD G. DRUM  
WILL & ESTATE BK 87 PG 311

LAT. 'V' DITCH  
EST. DDE = ?  
(SEE DETAIL ?)

LAT. 'V' DITCH  
EST. DDE = ?  
(SEE DETAIL ?)

-L- POC STA. 243+20.000 =  
-RPA- POT STA. 10+00.000  
(16.200m LT.)  
 $\Delta = 4' 00'' 00.0''$

-BL- 353  
-L- STA. 243+21.966  
14.226 (LT)

END SPECIAL GRADING  
-L- POT STA. 243+82.008  
(SEE STD. No. 862.01 SHT 1)

-BL- 352  
-L- STA. 241+97.088  
17.867 (LT)

1.2m P.S.  
4.2m  
1.2m P.S.  
1.2m P.S.  
1.2m P.S.

1.2m P.S.  
7.2m  
0.6m P.S.  
0.6m P.S.  
1.2m P.S.

0.6m P.S.  
0.6m P.S.  
1.2m P.S.  
1.2m P.S.

450 CSP W/  
2 ELBOWS

BEG. FUTURE  
BERM GUTTER  
-RPD- 11+43

PROPOSED W.W. FENCE

-L- POC STA. 243+40.000 =  
-RPD- CS STA. 10+00.000  
(16.200m RT.)

CLASS 'I' RIP RAP  
EST. 10 MTONS  
FILTER FABRIC  
EST. 19 SM

0.6m BASE DITCH  
W/CL 'I' RIP RAP  
@ S1 = 8.00%  
@ S2 = 0.70%  
EST. 24 MTONS  
FILTER FABRIC  
EST. 49 SM  
EST. DDE = 20 CM  
(SEE DETAIL ?)

TYPE 'A' BASIN  
600 CSP RISER  
600 CSP BARREL  
MIN. S.A. 347.3 SM  
MIN. STORAGE 370 CM  
P.M.S. ELEV. = 283.800  
E.M.S. ELEV. 284.100  
T.O.D. ELEV. = 284.550  
ELIMINATE 'A' BASIN UPON  
COMPLETION OF R-2206CA  
(PAYING PROJECT).

24 x 12 x 1  
3.5 weir

20 x 5 x 1  
3.5 weir

PIs Sta 10+34.517  
 $\theta_s = 1' 05'' 06.0''$   
 $\theta_s = 2' 51'' 54.3''$   
Ls = 60.000  
LT = 34.517  
ST = 25.506  
RI = 1583.800  
R2 = 600.000

PI Sta 11+62.757  
 $\Delta = 19' 26'' 11.6'' (LT)$   
L = 203.539  
T = 102.757  
R = 600.000  
e = 0.06

PIs Sta 12+83.544  
 $\theta_s = 2' 51'' 53.2''$   
Ls = 60.000  
LT = 40.005  
ST = 20.005

SEE SHEET 61 FOR -L- PROFILE  
SEE SHEET 69 FOR -RPA- PROFILE  
SEE SHEET 72 FOR -RPD- PROFILE