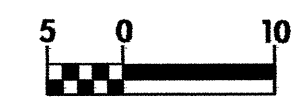
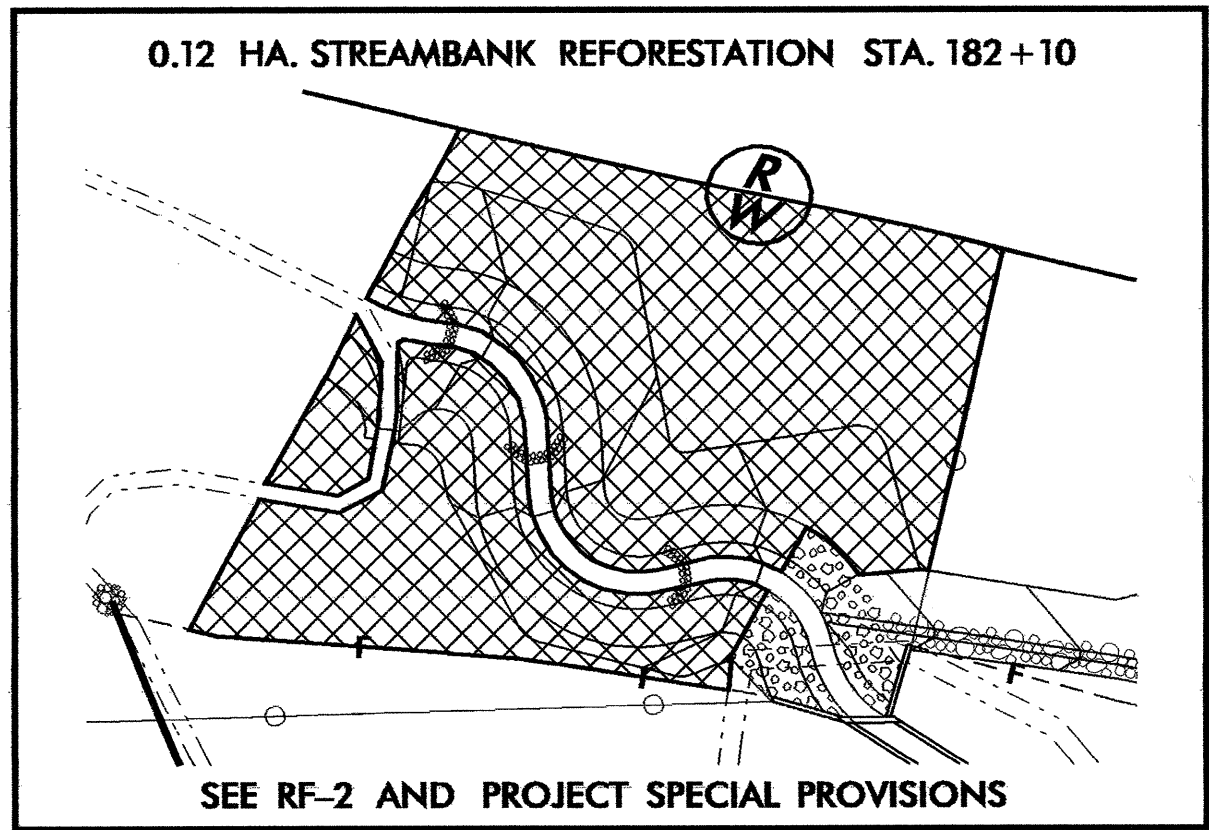
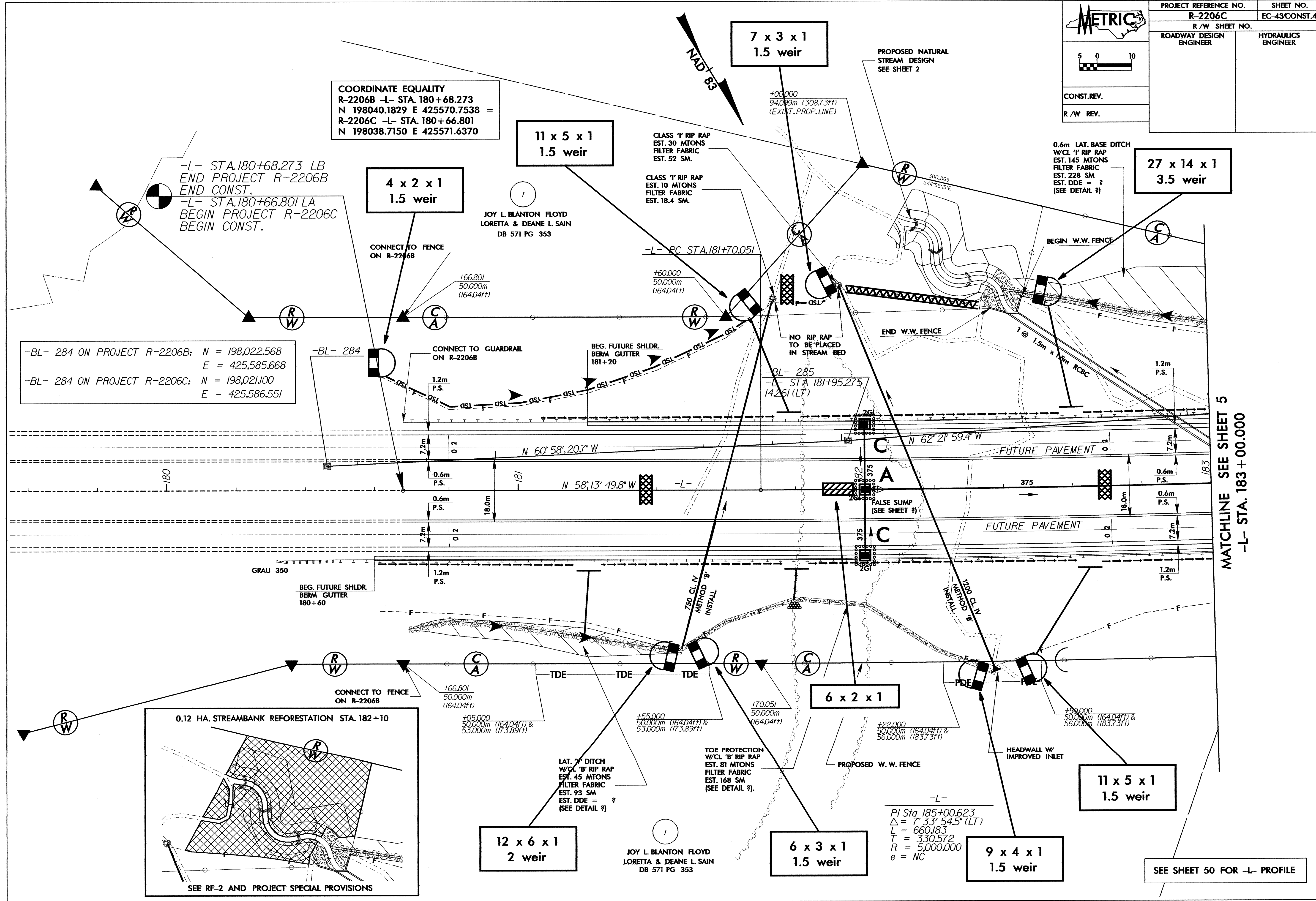
	PROJECT REFERENCE NO.	SHEET NO.
	R-2206C	EC-43/CONST.4
	R/W SHEET NO.	
ROADWAY DESIGN ENGINEER	HYDRAULICS ENGINEER	
		
CONST. REV.		
R/W REV.		

COORDINATE EQUALITY  
R-2206B -L- STA. 180+68.273  
N 198040.1829 E 425570.7538 =  
R-2206C -L- STA. 180+66.801  
N 198038.7150 E 425571.6370

-L- STA. 180+68.273 LB  
END PROJECT R-2206B  
END CONST.  
-L- STA. 180+66.801 LA  
BEGIN PROJECT R-2206C  
BEGIN CONST.

-BL- 284 ON PROJECT R-2206B: N = 198,022.568  
E = 425,585.668  
-BL- 284 ON PROJECT R-2206C: N = 198,021.100  
E = 425,586.551



MATCHLINE SEE SHEET 5  
-L- STA. 183+00.000

SEE SHEET 50 FOR -L- PROFILE

JOY L. BLANTON FLOYD  
LORETTA & DEANE L. SAIN  
DB 571 PG 353

-L-  
PI Sta. 185+00.623  
Δ = 7° 33' 54.5" (LT)  
L = 660.183  
T = 330.572  
R = 5,000.000  
e = NC