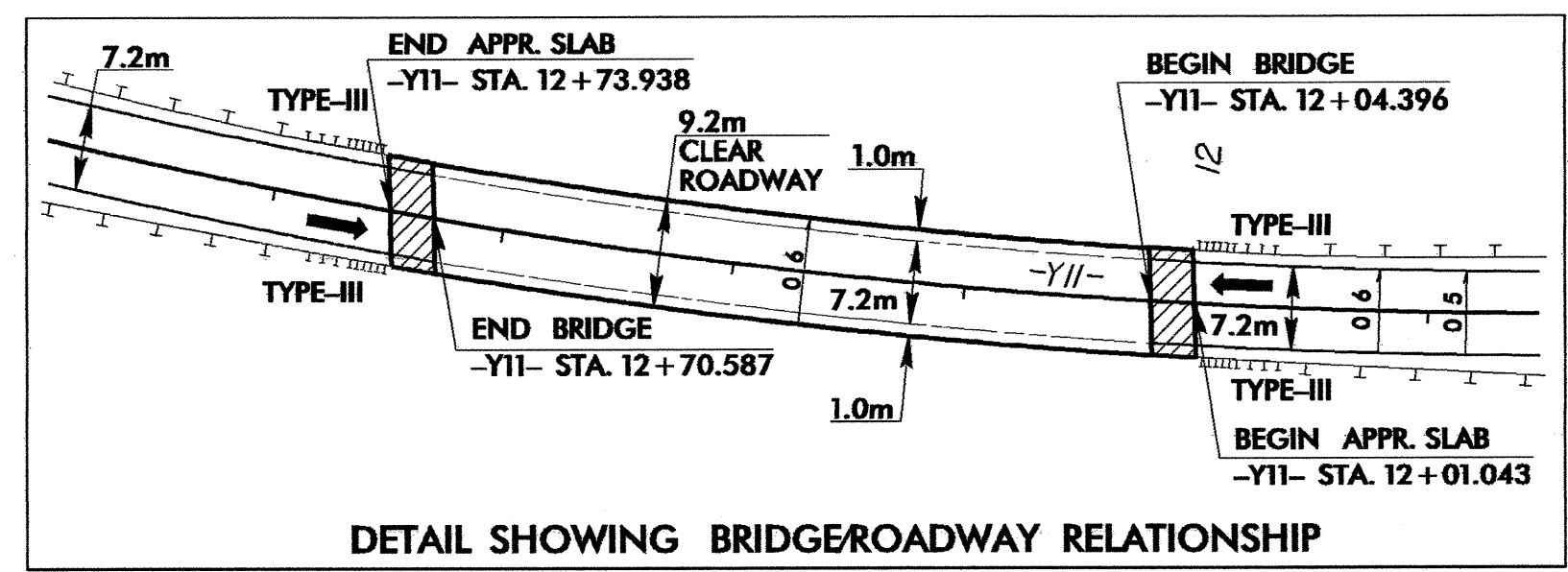
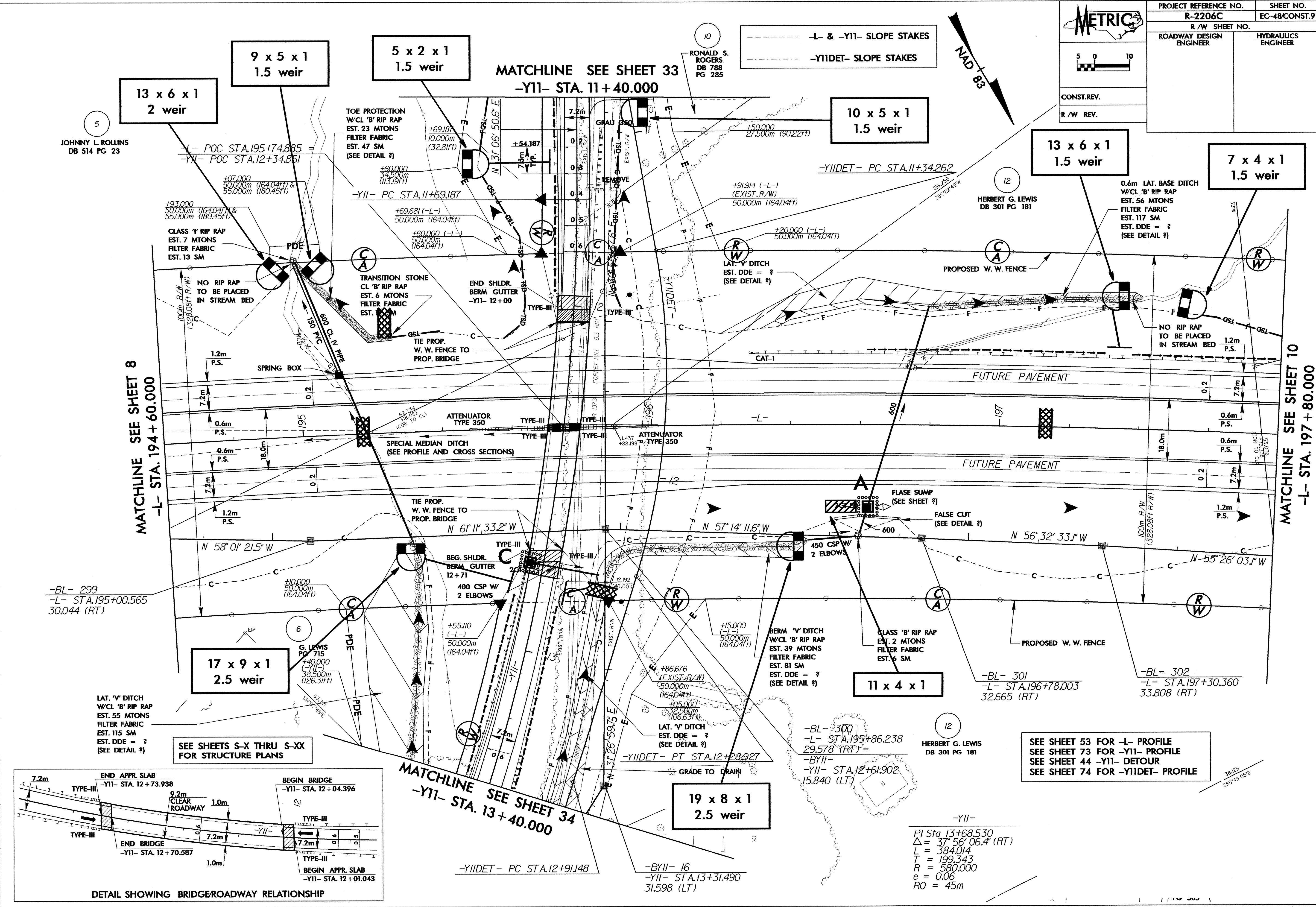
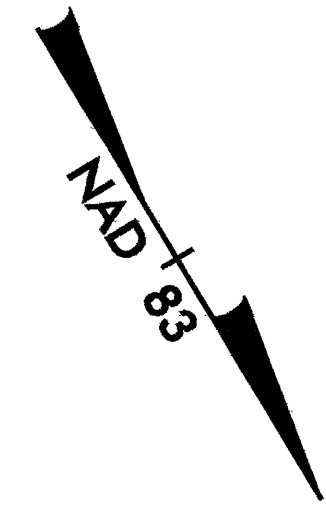
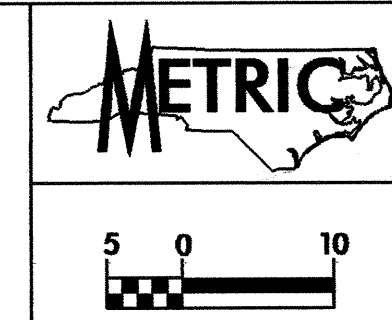


PROJECT REFERENCE NO.		SHEET NO.
R-2206C		EC-48/CONST.9
R/W SHEET NO.		
ROADWAY DESIGN ENGINEER		HYDRAULICS ENGINEER
JOHNNY L. ROLLINS DB 514 PG 23		HERBERT G. LEWIS DB 301 PG 181
CONST. REV.		
R/W REV.		



SEE SHEET 53 FOR -L- PROFILE
 SEE SHEET 73 FOR -Y11- PROFILE
 SEE SHEET 44 -Y11- DETOUR
 SEE SHEET 74 FOR -Y11DET- PROFILE

-Y11-
 PI Sta 13+68.530
 $\Delta = 37^\circ 56' 06.4''$ (RT)
 $L = 384.014$
 $T = 199.343$
 $R = 580.000$
 $e = 0.06$
 $RO = 45m$

SEE SHEETS S-X THRU S-XX
 FOR STRUCTURE PLANS

LAT. 'V' DITCH
 W/CL 'B' RIP RAP
 EST. 55 MTONS
 FILTER FABRIC
 EST. 115 SM
 EST. DDE = ?
 (SEE DETAIL ?)

-BL- 299
 -L- STA. 195+00.565
 30.044 (RT)

-BL- 301
 -L- STA. 196+78.003
 32.665 (RT)

-BL- 302
 -L- STA. 197+30.360
 33.808 (RT)

-BL- 300
 -L- STA. 195+86.238
 29.578 (RT) =
 -Y11- STA. 12+61.902
 15.840 (LT)

-BY11- 16
 -Y11- STA. 13+31.490
 31.598 (LT)

-Y11DET- PC STA. 12+91.148