

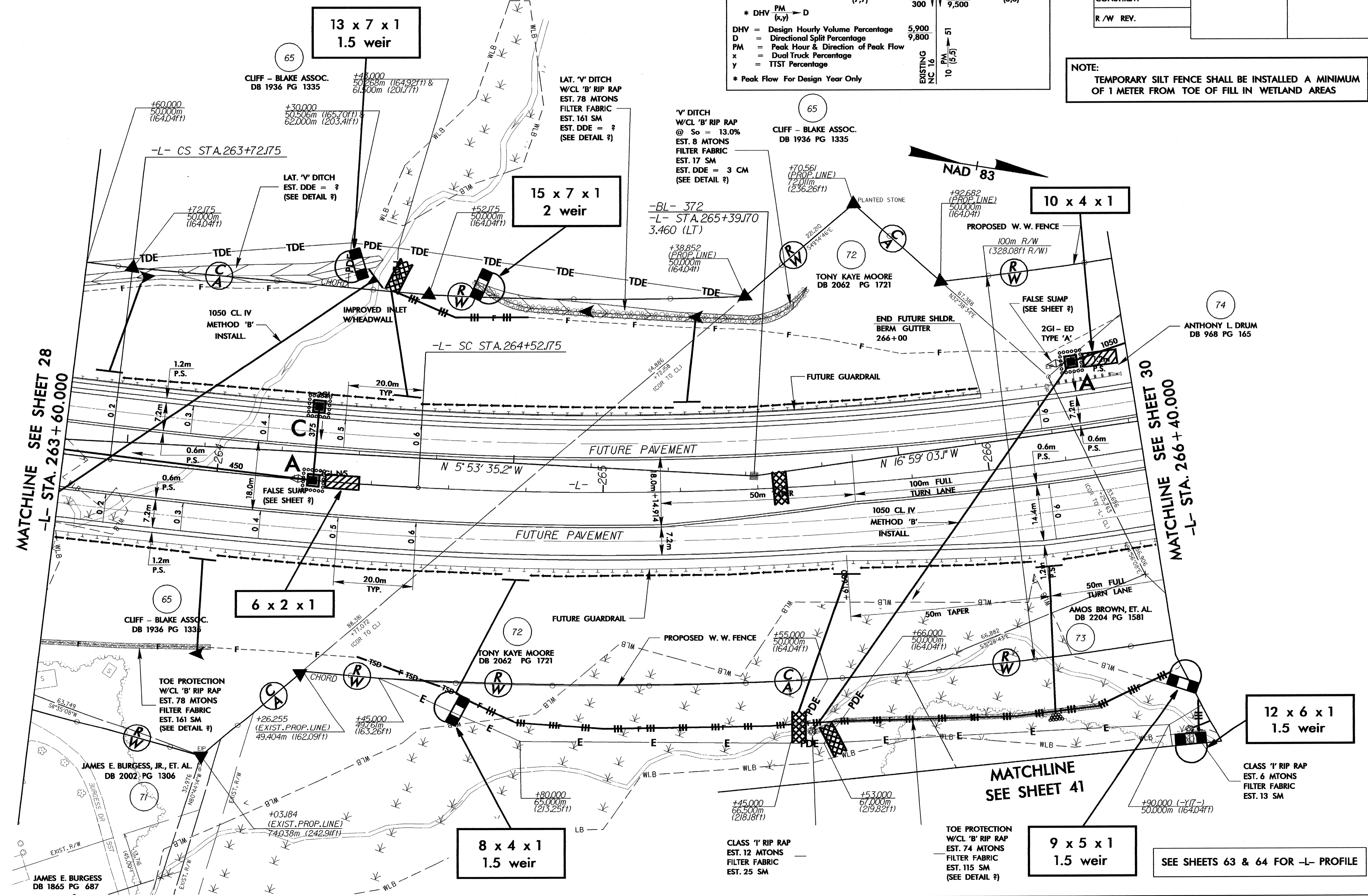
NOTE:
 TEMPORARY SILT FENCE SHALL BE INSTALLED A MINIMUM OF 1 METER FROM TOE OF FILL IN WETLAND AREAS

INTERSECTION WITH EXISTING NC 16

AVERAGE DAILY TRAFFIC 2003		2025	
PROPOSED NC 16	5,700	11,400	19,300
10 PM (7,7)	53	100	170
	300	5,800	9,500
		10 PM (6,6)	52
			10 (5,5)

* DHV PM (k,y) = D
 DHV = Design Hourly Volume Percentage 5,900
 D = Directional Split Percentage 9,800
 PM = Peak Hour & Direction of Peak Flow
 x = Dual Truck Percentage
 y = TTST Percentage
 * Peak Flow For Design Year Only

PI Sta 260+42.049 Δ = 15° 13' 19.3" (LT) L = 664.186 T = 334.060 R = 2,500.000 e = 0.02
 PIs Sta 264+18.607 Θs = 0° 54' 59.9" Os = 2° 37' 09.5" Ls = 80.000 LT = 46.432 ST = 33.592
 PI Sta 265+95.400 Δ = 18° 35' 31.4" (LT) L = 283.931 T = 143.224 R = 875.000 e = 0.06



MATCHLINE SEE SHEET 28
 -L- STA. 263 + 60.000

MATCHLINE SEE SHEET 30
 -L- STA. 266 + 40.000

MATCHLINE SEE SHEET 41

SEE SHEETS 63 & 64 FOR -L- PROFILE

JAMES E. BURGESS, JR., ET. AL.
 DB 2002 PG 1306

JAMES E. BURGESS
 DB 1865 PG 687

8 x 4 x 1
 1.5 weir

9 x 5 x 1
 1.5 weir

12 x 6 x 1
 1.5 weir

6 x 2 x 1

72

72

74

10 x 4 x 1

15 x 7 x 1
 2 weir

13 x 7 x 1
 1.5 weir

CLASS '1' RIP RAP
 EST. 12 MTONS
 FILTER FABRIC
 EST. 25 SM

TOE PROTECTION
 W/CL 'B' RIP RAP
 EST. 74 MTONS
 FILTER FABRIC
 EST. 115 SM
 (SEE DETAIL ?)

CLASS '1' RIP RAP
 EST. 6 MTONS
 FILTER FABRIC
 EST. 13 SM

TOE PROTECTION
 W/CL 'B' RIP RAP
 EST. 78 MTONS
 FILTER FABRIC
 EST. 161 SM
 (SEE DETAIL ?)

TONY KAYE MOORE
 DB 2062 PG 1721

CLIFF - BLAKE ASSOC.
 DB 1936 PG 1335

AMOS BROWN, ET. AL.
 DB 2204 PG 1581

TONY KAYE MOORE
 DB 2062 PG 1721

72

72

73

10 x 4 x 1

15 x 7 x 1
 2 weir

13 x 7 x 1
 1.5 weir

'V' DITCH
 W/CL 'B' RIP RAP
 @ So = 13.0%
 EST. 8 MTONS
 FILTER FABRIC
 EST. 17 SM
 EST. DDE = 3 CM
 (SEE DETAIL ?)

'V' DITCH
 W/CL 'B' RIP RAP
 EST. 78 MTONS
 FILTER FABRIC
 EST. 161 SM
 EST. DDE = ?
 (SEE DETAIL ?)

CLIFF - BLAKE ASSOC.
 DB 1936 PG 1335

CLIFF - BLAKE ASSOC.
 DB 1936 PG 1335

TONY KAYE MOORE
 DB 2062 PG 1721

ANTHONY L. DRUM
 DB 968 PG 165

END FUTURE SHLDR.
 BERM GUTTER
 266+00

FALSE SUMP
 (SEE SHEET ?)

PROPOSED W.W. FENCE
 100m R/W
 (328.08ft R/W)

-BL- 372
 -L- STA. 265+39.170
 3.460 (LT)

-L- SC STA. 264+52.175

-L- CS STA. 263+72.175

FALSE SUMP
 (SEE SHEET ?)

FUTURE PAVEMENT

FUTURE PAVEMENT

FUTURE GUARDRAIL

FUTURE GUARDRAIL

100m FULL TURN LANE

1050 CL IV METHOD 'B' INSTALL

50m FULL TURN LANE

AMOS BROWN, ET. AL.
 DB 2204 PG 1581

JAMES E. BURGESS, JR., ET. AL.
 DB 2002 PG 1306

JAMES E. BURGESS
 DB 1865 PG 687

8 x 4 x 1
 1.5 weir

9 x 5 x 1
 1.5 weir

12 x 6 x 1
 1.5 weir

6 x 2 x 1

72

72

74

10 x 4 x 1

15 x 7 x 1
 2 weir

13 x 7 x 1
 1.5 weir

CLASS '1' RIP RAP
 EST. 12 MTONS
 FILTER FABRIC
 EST. 25 SM

TOE PROTECTION
 W/CL 'B' RIP RAP
 EST. 74 MTONS
 FILTER FABRIC
 EST. 115 SM
 (SEE DETAIL ?)

CLASS '1' RIP RAP
 EST. 6 MTONS
 FILTER FABRIC
 EST. 13 SM

TOE PROTECTION
 W/CL 'B' RIP RAP
 EST. 78 MTONS
 FILTER FABRIC
 EST. 161 SM
 (SEE DETAIL ?)

TONY KAYE MOORE
 DB 2062 PG 1721

CLIFF - BLAKE ASSOC.
 DB 1936 PG 1335

AMOS BROWN, ET. AL.
 DB 2204 PG 1581

TONY KAYE MOORE
 DB 2062 PG 1721

72

72

73

10 x 4 x 1

15 x 7 x 1
 2 weir

13 x 7 x 1
 1.5 weir

'V' DITCH
 W/CL 'B' RIP RAP
 @ So = 13.0%
 EST. 8 MTONS
 FILTER FABRIC
 EST. 17 SM
 EST. DDE = 3 CM
 (SEE DETAIL ?)

'V' DITCH
 W/CL 'B' RIP RAP
 EST. 78 MTONS
 FILTER FABRIC
 EST. 161 SM
 EST. DDE = ?
 (SEE DETAIL ?)

CLIFF - BLAKE ASSOC.
 DB 1936 PG 1335

CLIFF - BLAKE ASSOC.
 DB 1936 PG 1335

TONY KAYE MOORE
 DB 2062 PG 1721

ANTHONY L. DRUM
 DB 968 PG 165

END FUTURE SHLDR.
 BERM GUTTER
 266+00

FALSE SUMP
 (SEE SHEET ?)

PROPOSED W.W. FENCE
 100m R/W
 (328.08ft R/W)

-BL- 372
 -L- STA. 265+39.170
 3.460 (LT)

-L- SC STA. 264+52.175

-L- CS STA. 263+72.175

FALSE SUMP
 (SEE SHEET ?)

FUTURE PAVEMENT

FUTURE PAVEMENT

FUTURE GUARDRAIL

FUTURE GUARDRAIL

100m FULL TURN LANE

1050 CL IV METHOD 'B' INSTALL

50m FULL TURN LANE

AMOS BROWN, ET. AL.
 DB 2204 PG 1581

JAMES E. BURGESS, JR., ET. AL.
 DB 2002 PG 1306

JAMES E. BURGESS
 DB 1865 PG 687

8 x 4 x 1
 1.5 weir

9 x 5 x 1
 1.5 weir

12 x 6 x 1
 1.5 weir

6 x 2 x 1

72

72

74

10 x 4 x 1

15 x 7 x 1
 2 weir

13 x 7 x 1
 1.5 weir

CLASS '1' RIP RAP
 EST. 12 MTONS
 FILTER FABRIC
 EST. 25 SM

TOE PROTECTION
 W/CL 'B' RIP RAP
 EST. 74 MTONS
 FILTER FABRIC
 EST. 115 SM
 (SEE DETAIL ?)

CLASS '1' RIP RAP
 EST. 6 MTONS
 FILTER FABRIC
 EST. 13 SM

TOE PROTECTION
 W/CL 'B' RIP RAP
 EST. 78 MTONS
 FILTER FABRIC
 EST. 161 SM
 (SEE DETAIL ?)

TONY KAYE MOORE
 DB 2062 PG 1721

CLIFF - BLAKE ASSOC.
 DB 1936 PG 1335

AMOS BROWN, ET. AL.
 DB 2204 PG 1581

TONY KAYE MOORE
 DB 2062 PG 1721

72

72

73

10 x 4 x 1

15 x 7 x 1
 2 weir

13 x 7 x 1
 1.5 weir

'V' DITCH
 W/CL 'B' RIP RAP
 @ So = 13.0%
 EST. 8 MTONS
 FILTER FABRIC
 EST. 17 SM
 EST. DDE = 3 CM
 (SEE DETAIL ?)

'V' DITCH
 W/CL 'B' RIP RAP
 EST. 78 MTONS
 FILTER FABRIC
 EST. 161 SM
 EST. DDE = ?
 (SEE DETAIL ?)

CLIFF - BLAKE ASSOC.
 DB 1936 PG 1335

CLIFF - BLAKE ASSOC.
 DB 1936 PG 1335

TONY KAYE MOORE
 DB 2062 PG 1721

ANTHONY L. DRUM
 DB 968 PG 165

END FUTURE SHLDR.
 BERM GUTTER
 266+00

FALSE SUMP
 (SEE SHEET ?)

PROPOSED W.W. FENCE
 100m R/W
 (328.08ft R/W)

-BL- 372
 -L- STA. 265+39.170
 3.460 (LT)

-L- SC STA. 264+52.175

-L- CS STA. 263+72.175

FALSE SUMP
 (SEE SHEET ?)

FUTURE PAVEMENT

FUTURE PAVEMENT

FUTURE GUARDRAIL

FUTURE GUARDRAIL

100m FULL TURN LANE

1050 CL IV METHOD 'B' INSTALL

50m FULL TURN LANE

AMOS BROWN, ET. AL.
 DB 2204 PG 1581

JAMES E. BURGESS, JR., ET. AL.
 DB 2002 PG 1306

JAMES E. BURGESS
 DB 1865 PG 687

8 x 4 x 1
 1.5 weir

9 x 5 x 1
 1.5 weir

12 x 6 x 1
 1.5 weir

6 x 2 x 1

72

72

74

10 x 4 x 1

15 x 7 x 1
 2 weir

13 x 7 x 1
 1.5 weir

CLASS '1' RIP RAP
 EST. 12 MTONS
 FILTER FABRIC
 EST. 25 SM

TOE PROTECTION
 W/CL 'B' RIP RAP
 EST. 74 MTONS
 FILTER FABRIC
 EST. 115 SM
 (SEE DETAIL ?)

CLASS '1' RIP RAP
 EST. 6 MTONS
 FILTER FABRIC
 EST. 13 SM

TOE PROTECTION
 W/CL 'B' RIP RAP
 EST. 78 MTONS
 FILTER FABRIC
 EST. 161 SM
 (SEE DETAIL ?)

TONY KAYE MOORE
 DB 2062 PG 1721

CLIFF - BLAKE ASSOC.
 DB 1936 PG 1335

AMOS BROWN, ET. AL.
 DB 2204 PG 1581

TONY KAYE MOORE
 DB 2062 PG 1721

72

72

73

10 x 4 x 1

15 x 7 x 1
 2 weir

13 x 7 x 1
 1.5 weir

'V' DITCH
 W/CL 'B' RIP RAP
 @ So = 13.0%
 EST. 8 MTONS
 FILTER FABRIC
 EST. 17 SM
 EST. DDE = 3 CM
 (SEE DETAIL ?)

'V' DITCH
 W/CL 'B' RIP RAP
 EST. 78 MTONS
 FILTER FABRIC
 EST. 161 SM
 EST. DDE = ?
 (SEE DETAIL ?)

CLIFF - BLAKE ASSOC.
 DB 1936 PG 1335

CLIFF - BLAKE ASSOC.
 DB 1936 PG 1335

TONY KAYE MOORE
 DB 2062 PG 1721

ANTHONY L. DRUM
 DB 968 PG 165

END FUTURE SHLDR.
 BERM GUTTER
 266+00

FALSE SUMP
 (SEE SHEET ?)

PROPOSED W.W. FENCE
 100m R/W
 (328.08ft R/W)

-BL- 372
 -L- STA. 265+39.170
 3.460 (LT)

-L- SC STA. 264+52.175

-L- CS STA. 263+72.175

FALSE SUMP
 (SEE SHEET ?)

FUTURE PAVEMENT

FUTURE PAVEMENT

FUTURE GUARDRAIL

FUTURE GUARDRAIL

100m FULL TURN LANE

1050 CL IV METHOD 'B' INSTALL

50m FULL TURN LANE

AMOS BROWN, ET. AL.
 DB 2204 PG 1581

JAMES E. BURGESS, JR., ET. AL.
 DB 2002 PG 1306

JAMES E. BURGESS
 DB 1865 PG 687

8 x 4 x 1
 1.5 weir

9 x 5 x 1
 1.5 weir

12 x 6 x 1
 1.5 weir

6 x 2 x 1

72

72