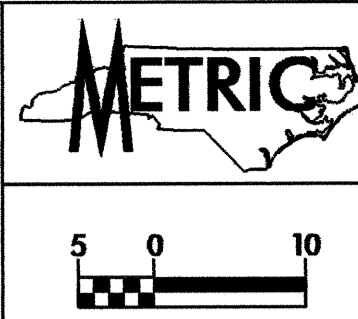
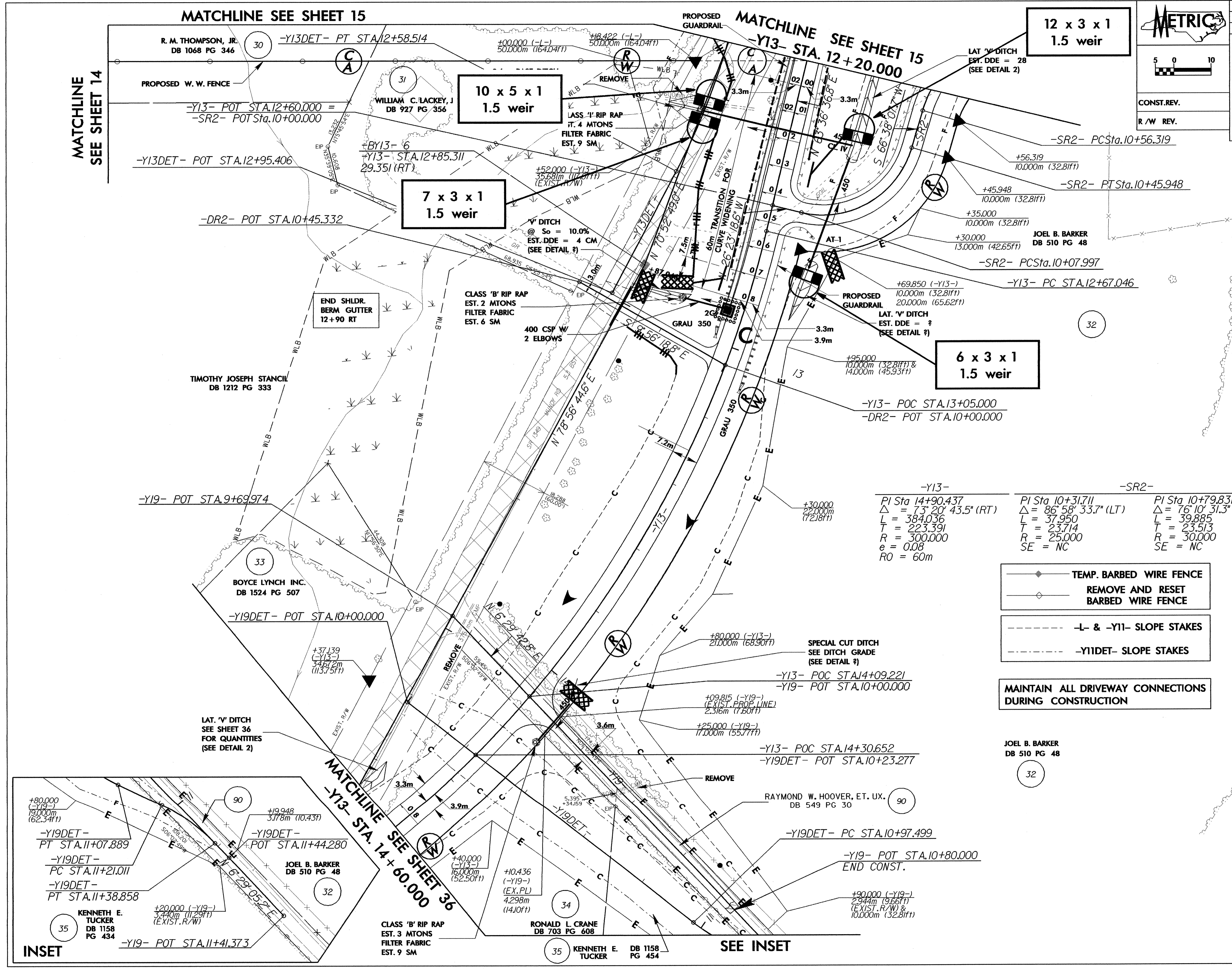


PROJECT REFERENCE NO.	SHEET NO.
R-2206C	EC-74/CONST.35
R/W SHEET NO.	
ROADWAY DESIGN ENGINEER	HYDRAULICS ENGINEER



CONST. REV.  
R/W REV.

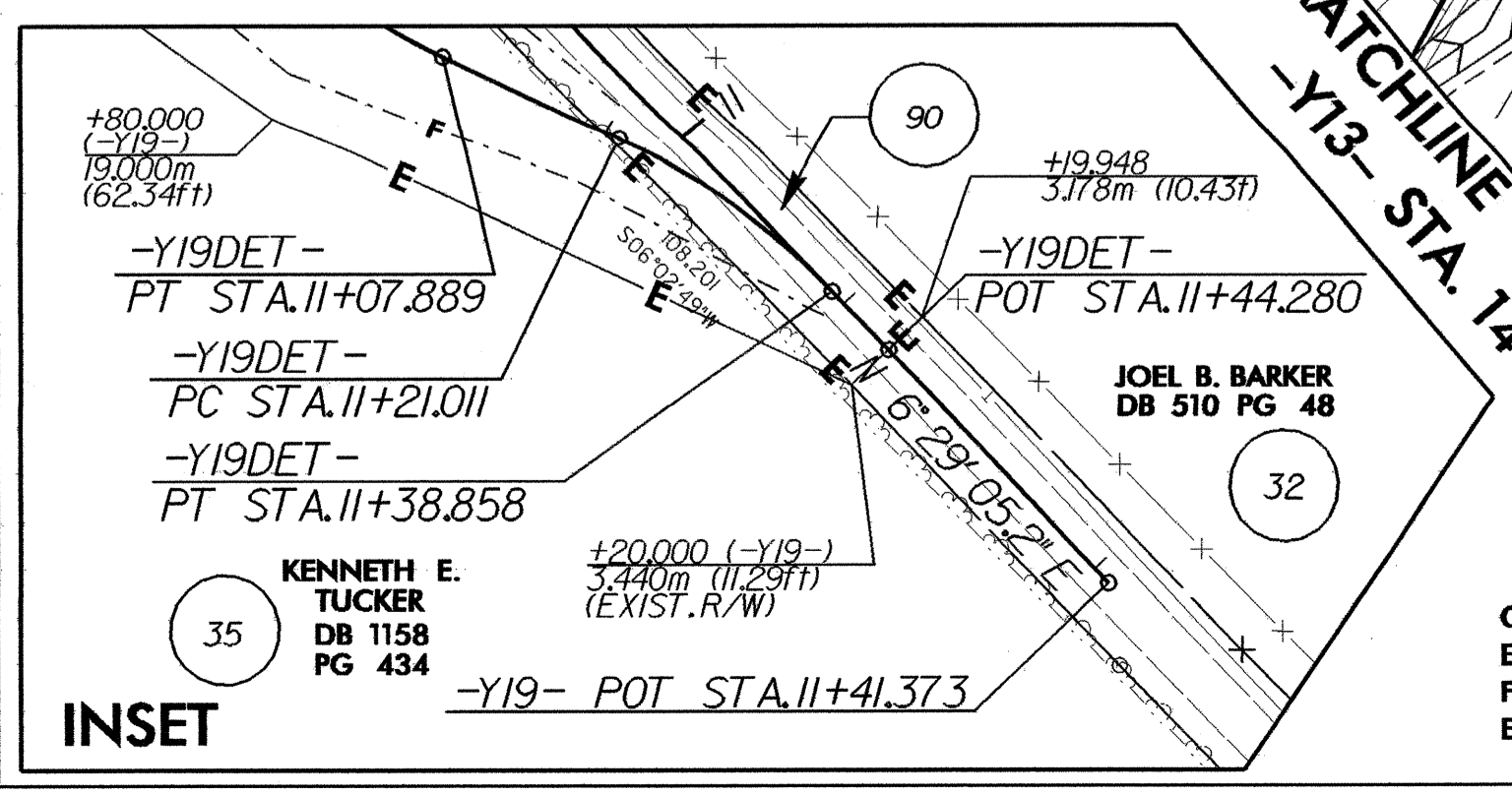


-Y13-	-SR2-	-SR2-
PI Sta 14+90.437	PI Sta 10+31.711	PI Sta 10+79.831
$\Delta = 73^{\circ} 20' 43.5''$ (RT)	$\Delta = 86^{\circ} 58' 33.7''$ (LT)	$\Delta = 76^{\circ} 10' 31.3''$ (RT)
L = 384.036	L = 37.950	L = 39.885
T = 223.391	T = 23.714	T = 23.513
R = 300.000	R = 25.000	R = 30.000
e = 0.08	SE = NC	SE = NC
RO = 60m		

- ◆ TEMP. BARBED WIRE FENCE
- ◇ REMOVE AND RESET BARBED WIRE FENCE
- L- & -Y11- SLOPE STAKES
- -Y11DET- SLOPE STAKES

**MAINTAIN ALL DRIVEWAY CONNECTIONS DURING CONSTRUCTION**

JOEL B. BARKER  
DB 510 PG 48



**INSET**

CLASS 'B' RIP RAP  
EST. 3 MTONS  
FILTER FABRIC  
EST. 9 SM

**SEE INSET**

