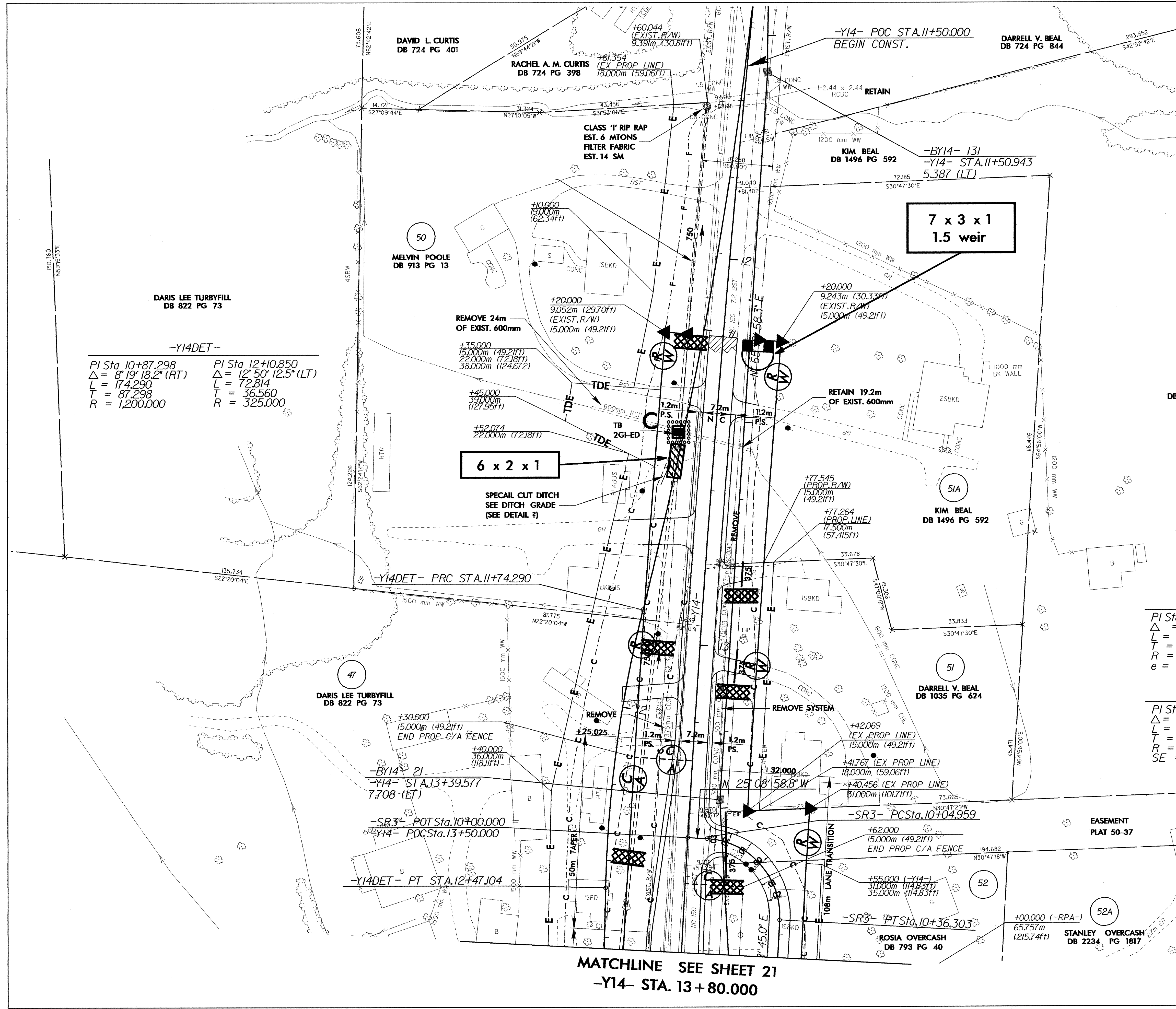


METRIC

CONST. REV.
R/W REV.

PROJECT REFERENCE NO. R-2206C	SHEET NO. EC-76/CONST.37
R/W SHEET NO.	
ROADWAY DESIGN ENGINEER	HYDRAULICS ENGINEER



-Y14DET-

PI Sta 10+87.298	PI Sta 12+10.850
$\Delta = 8^{\circ} 19' 18.2''$ (RT)	$\Delta = 12^{\circ} 50' 12.5''$ (LT)
L = 174.290	L = 72.814
T = 87.298	T = 36.560
R = 1,200.000	R = 325.000

-Y14-

PI Sta 15+40.904
$\Delta = 10^{\circ} 07' 29.0''$ (LT)
L = 989.574
T = 496.078
R = 5,600.000
e = NC

-SR3-

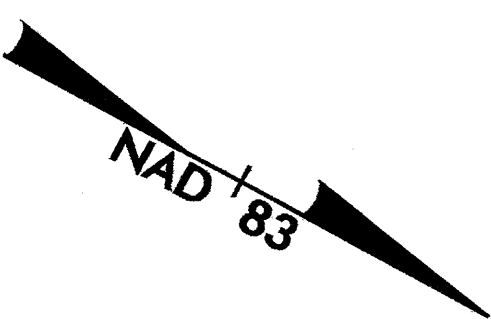
PI Sta 10+24.888
$\Delta = 89^{\circ} 47' 43.8''$ (RT)
L = 31.345
T = 19.929
R = 20.000
SE = RC

-SR3A-

PI Sta 10+24.969
$\Delta = 26^{\circ} 58' 49.9''$ (RT)
L = 14.127
T = 7.197
R = 30.000
SE = RC

MAINTAIN ALL DRIVEWAY CONNECTIONS DURING CONSTRUCTION

--- -Y14- SLOPE STAKES
- - - -Y14DET- SLOPE STAKES



MATCHLINE SEE SHEET 21
-Y14- STA. 13+80.000

SEE SHEET 76 FOR -Y14- PROFILE
SEE SHEETS 46, 47 & 48 FOR -Y14- DETOUR
SEE SHEETS 77 & 78 FOR -Y14DET- PROFILE