

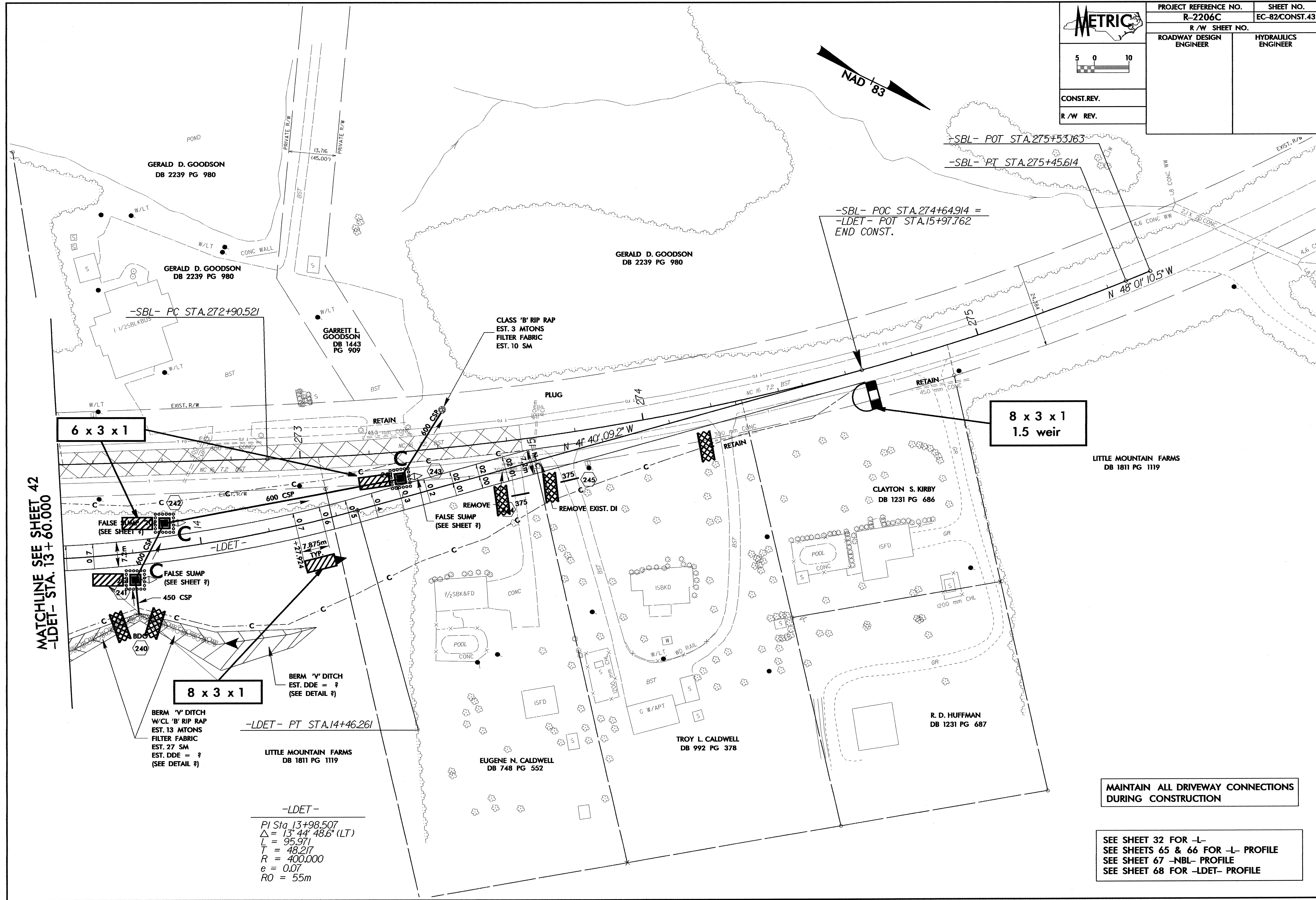
**METRIC**

5 0 10

CONST. REV.

R/W REV.

PROJECT REFERENCE NO. R-2206C	SHEET NO. EC-82/CONST.43
R/W SHEET NO.	
ROADWAY DESIGN ENGINEER	HYDRAULICS ENGINEER



MATCHLINE SEE SHEET 42  
-LDET- STA. 13+60.000

**6 x 3 x 1**

**8 x 3 x 1  
1.5 weir**

**8 x 3 x 1**

BERM 'V' DITCH  
W/CL 'B' RIP RAP  
EST. 13 MTONS  
FILTER FABRIC  
EST. 27 SM  
EST. DDE = ?  
(SEE DETAIL ?)

-LDET- PT STA. 14+46.261

LITTLE MOUNTAIN FARMS  
DB 1811 PG 1119

-LDET-  
PI Sta. 13+98.507  
 $\Delta = 13^{\circ} 44' 48.6''$  (LT)  
L = 95.971  
T = 48.217  
R = 400.000  
e = 0.07  
RO = 55m

**MAINTAIN ALL DRIVEWAY CONNECTIONS  
DURING CONSTRUCTION**

SEE SHEET 32 FOR -L-  
SEE SHEETS 65 & 66 FOR -L- PROFILE  
SEE SHEET 67 -NBL- PROFILE  
SEE SHEET 68 FOR -LDET- PROFILE