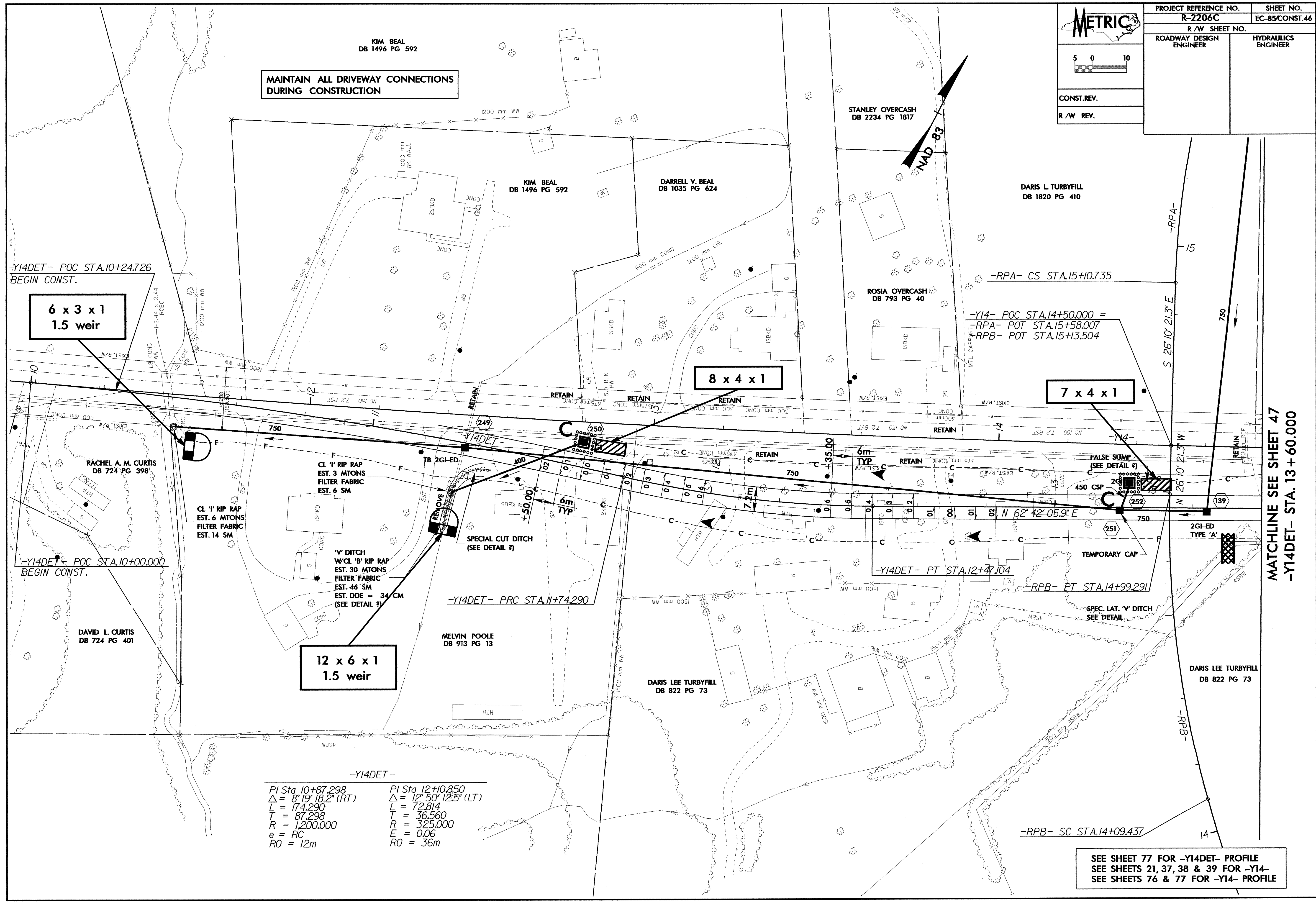


METRIC

CONST. REV.
R/W REV.

PROJECT REFERENCE NO. R-2206C	SHEET NO. EC-85/CONST.46
R/W SHEET NO.	
ROADWAY DESIGN ENGINEER	HYDRAULICS ENGINEER

MAINTAIN ALL DRIVEWAY CONNECTIONS DURING CONSTRUCTION



-Y14DET- POC STA.10+24.726
BEGIN CONST.

**6 x 3 x 1
1.5 weir**

8 x 4 x 1

7 x 4 x 1

**12 x 6 x 1
1.5 weir**

-Y14DET- POC STA.10+00.000
BEGIN CONST.

DAVID L. CURTIS
DB 724 PG 401

CL '1' RIP RAP
EST. 6 MTONS
FILTER FABRIC
EST. 14 SM

CL '1' RIP RAP
EST. 3 MTONS
FILTER FABRIC
EST. 6 SM

'V' DITCH
W/CL 'B' RIP RAP
EST. 30 MTONS
FILTER FABRIC
EST. 46 SM
EST. DDE = 34 CM
(SEE DETAIL #)

MELVIN POOLE
DB 913 PG 13

-Y14DET- PRC STA.11+74.290

DARIS LEE TURBYFILL
DB 822 PG 73

-Y14DET- PT STA.12+47.104

-RPB- PT STA.14+99.291

SPEC. LAT. 'V' DITCH
SEE DETAIL

DARIS LEE TURBYFILL
DB 822 PG 73

-Y14DET-

PI Sta. 10+87.298	PI Sta. 12+10.850
$\Delta = 8^{\circ}19'18.2''$ (RT)	$\Delta = 12^{\circ}50'12.5''$ (LT)
L = 174.290	L = 72.814
T = 87.298	T = 36.560
R = 1,200.000	R = 325.000
e = RC	E = 0.06
RO = 12m	RO = 36m

-RPB- SC STA.14+09.437

SEE SHEET 77 FOR -Y14DET- PROFILE
SEE SHEETS 21, 37, 38 & 39 FOR -Y14-
SEE SHEETS 76 & 77 FOR -Y14- PROFILE

MATCHLINE SEE SHEET 47
-Y14DET- STA. 13 + 60.000