

METRIC

CONST. REV.
R/W REV.

| | |
|---|------------------------------------|
| PROJECT REFERENCE NO. R-2206C | SHEET NO. EC-87/CONST.48 |
| R/W SHEET NO. | |
| ROADWAY DESIGN ENGINEER | HYDRAULICS ENGINEER |

MAINTAIN ALL DRIVEWAY CONNECTIONS DURING CONSTRUCTION

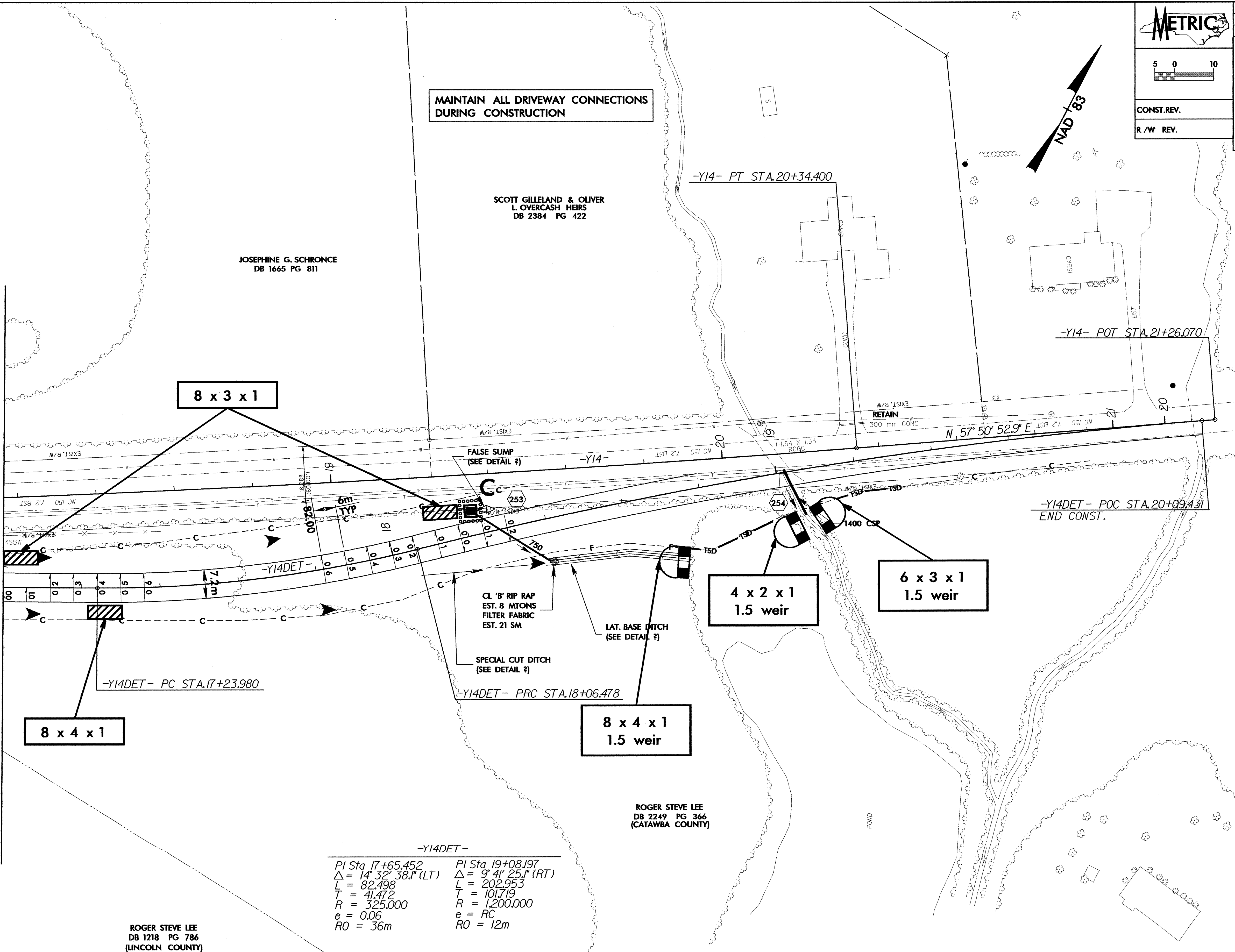
SCOTT GILLELAND & OLIVER
L. OVERCASH HEIRS
DB 2384 PG 422

JOSEPHINE G. SCHRONCE
DB 1665 PG 811

ROGER STEVE LEE
DB 2249 PG 366
(CATAWBA COUNTY)

ROGER STEVE LEE
DB 1218 PG 786
(LINCOLN COUNTY)

MATCHLINE SEE SHEET 47
-Y14DET STA. 17+20.000



-Y14DET-

| | |
|---------------------------------------|--------------------------------------|
| PI Sta 17+65.452 | PI Sta 19+08.197 |
| $\Delta = 14^{\circ} 32' 38.1''$ (LT) | $\Delta = 9^{\circ} 41' 25.1''$ (RT) |
| L = 82.498 | L = 202.953 |
| T = 41.472 | T = 101.719 |
| R = 325.000 | R = 1,200.000 |
| e = 0.06 | e = RC |
| RO = 36m | RO = 12m |

SEE SHEETS 77 & 78 FOR -Y14DET- PROFILE
SEE SHEETS 21, 37, 38 & 39 FOR -Y14-
SEE SHEETS 76 & 77 FOR -Y14- PROFILE