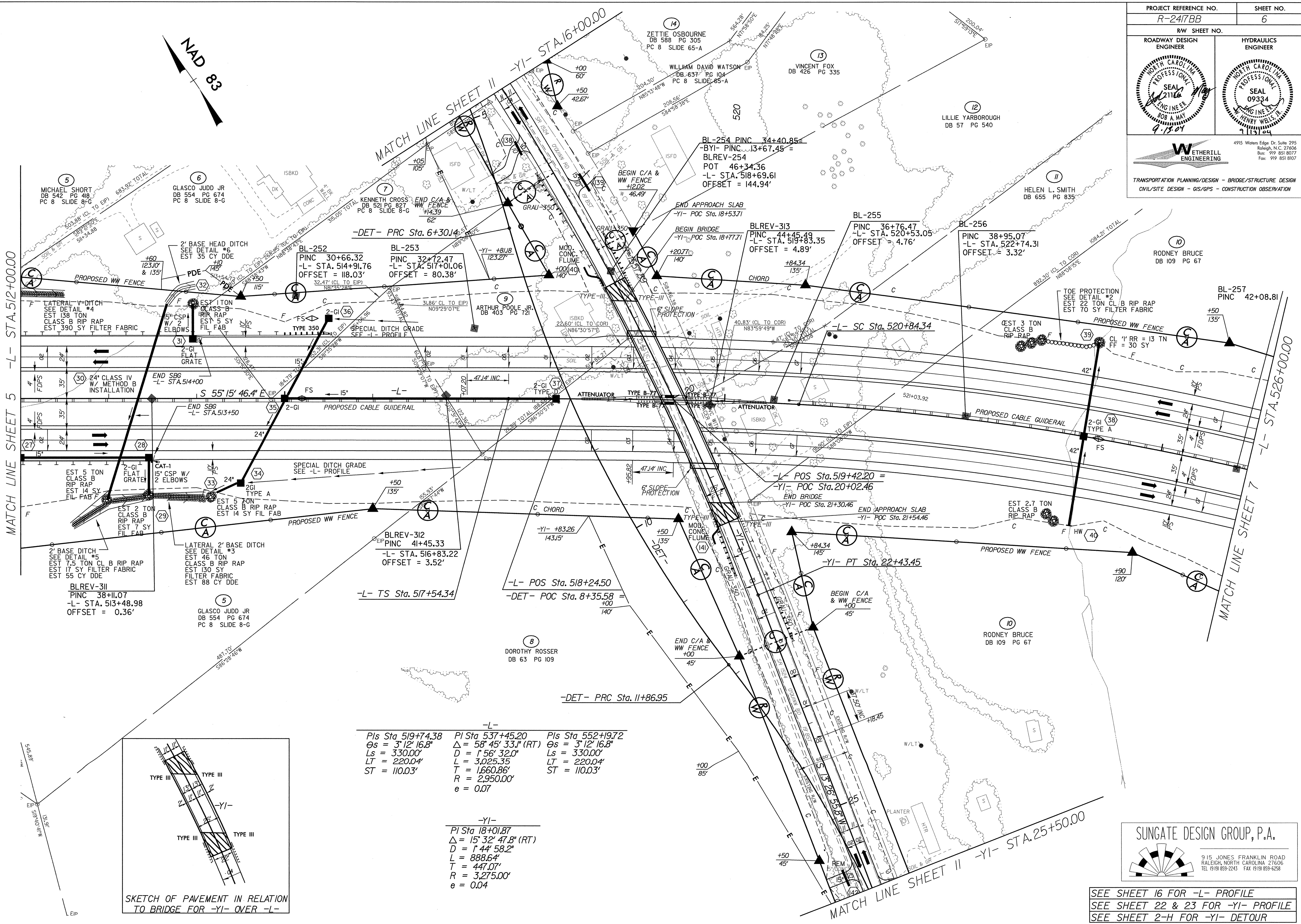


7/2/99

PROJECT REFERENCE NO. R-2417BB		SHEET NO. 6	
RW SHEET NO. ROADWAY DESIGN ENGINEER		HYDRAULICS ENGINEER	
		4915 Waters Edge Dr. Suite 295 Raleigh, N.C. 27606 Bus: 919 851 8077 Fax: 919 851 8107	
TRANSPORTATION PLANNING/DESIGN - BRIDGE/STRUCTURE DESIGN CIVIL/SITE DESIGN - GIS/GPS - CONSTRUCTION OBSERVATION			



MATCH LINE SHEET 5 -L- STA. 512+00.00

MATCH LINE SHEET 7 -L- STA. 526+00.00

NAD 83

MATCH LINE SHEET II -YI- STA. 16+00.00

BL-252 PINC 30+66.32
-L- STA. 514+91.76
OFFSET = 118.03'
32.47' (CL TO EIP)
N81°45'22"E

BL-253 PINC 32+72.47
-L- STA. 517+01.06
OFFSET = 80.38'
123.27'
N89°29'07"E

BL-254 PINC 34+40.85
-BYI- PINC 13+67.45 =
BLREV-254
POT 46+34.36
-L- STA. 518+69.61
OFFSET = 144.94'

BLREV-313 PINC 44+45.49
-L- STA. 519+83.35
OFFSET = 4.89'
140'

BL-255 PINC 36+76.47
-L- STA. 520+53.05
OFFSET = 4.76'
135'

BL-256 PINC 38+95.07
-L- STA. 522+74.31
OFFSET = 3.32'
135'

BL-257 PINC 42+08.81
OFFSET = 3.32'
135'

BLREV-312 PINC 41+45.33
-L- STA. 516+83.22
OFFSET = 3.52'
143.15'

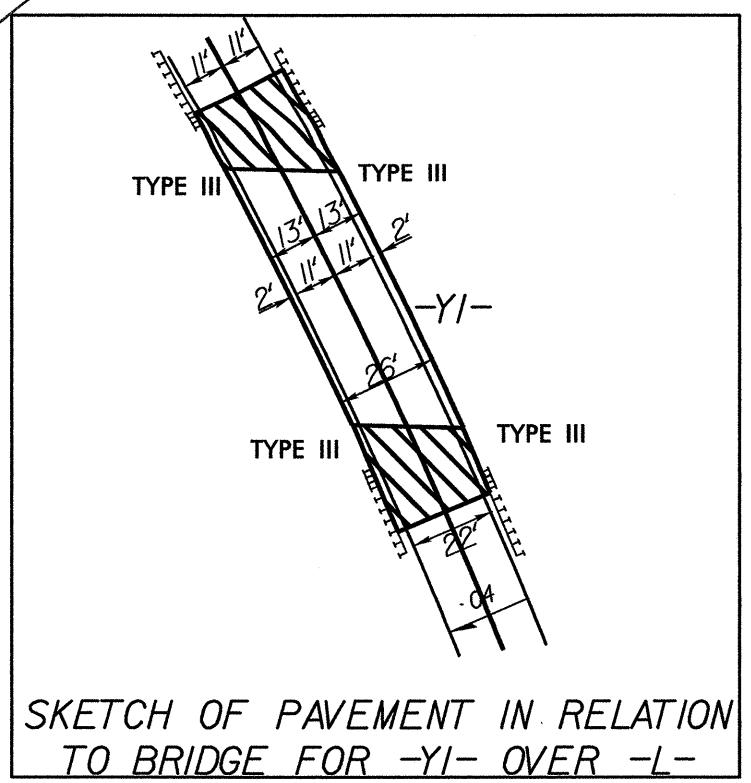
BLREV-311 PINC 38+11.07
-L- STA. 513+48.98
OFFSET = 0.36'
145'

BLREV-310 PINC 38+11.07
-L- STA. 513+48.98
OFFSET = 0.36'
145'

BLREV-309 PINC 38+11.07
-L- STA. 513+48.98
OFFSET = 0.36'
145'

-L-
 Pts Sta 519+74.38 PI Sta 537+45.20 Pts Sta 552+9.72
 $\Delta = 58^{\circ} 45' 33.1''$ (RT) $\Delta = 3^{\circ} 12' 16.8''$
 $L_s = 330.00'$ $D = 1' 56'' 32.0''$ $L_s = 330.00'$
 $LT = 220.04'$ $T = 3.025.35$ $LT = 220.04'$
 $ST = 110.03'$ $R = 1,660.86'$ $ST = 110.03'$
 $R = 2,950.00'$
 $e = 0.07$

-YI-
 PI Sta 18+01.87
 $\Delta = 15^{\circ} 32' 47.8''$ (RT)
 $D = 1' 44'' 58.2''$
 $L = 888.64'$
 $T = 447.07'$
 $R = 3,275.00'$
 $e = 0.04$



13-JUL-2004 13:32
 R:\R-2417\bb\Roadway\Pr9\N-2417bb.rdw...psh06.dgn
 M:\planner\MIKETA\TAYLOR\Pr9\N-2417bb.rdw...psh06.dgn

SUNGATE DESIGN GROUP, P.A.

915 JONES FRANKLIN ROAD
 RALEIGH, NORTH CAROLINA 27606
 TEL 919 859-2243 FAX 919 859-6258

SEE SHEET 16 FOR -L- PROFILE
 SEE SHEET 22 & 23 FOR -YI- PROFILE
 SEE SHEET 2-H FOR -YI- DETOUR