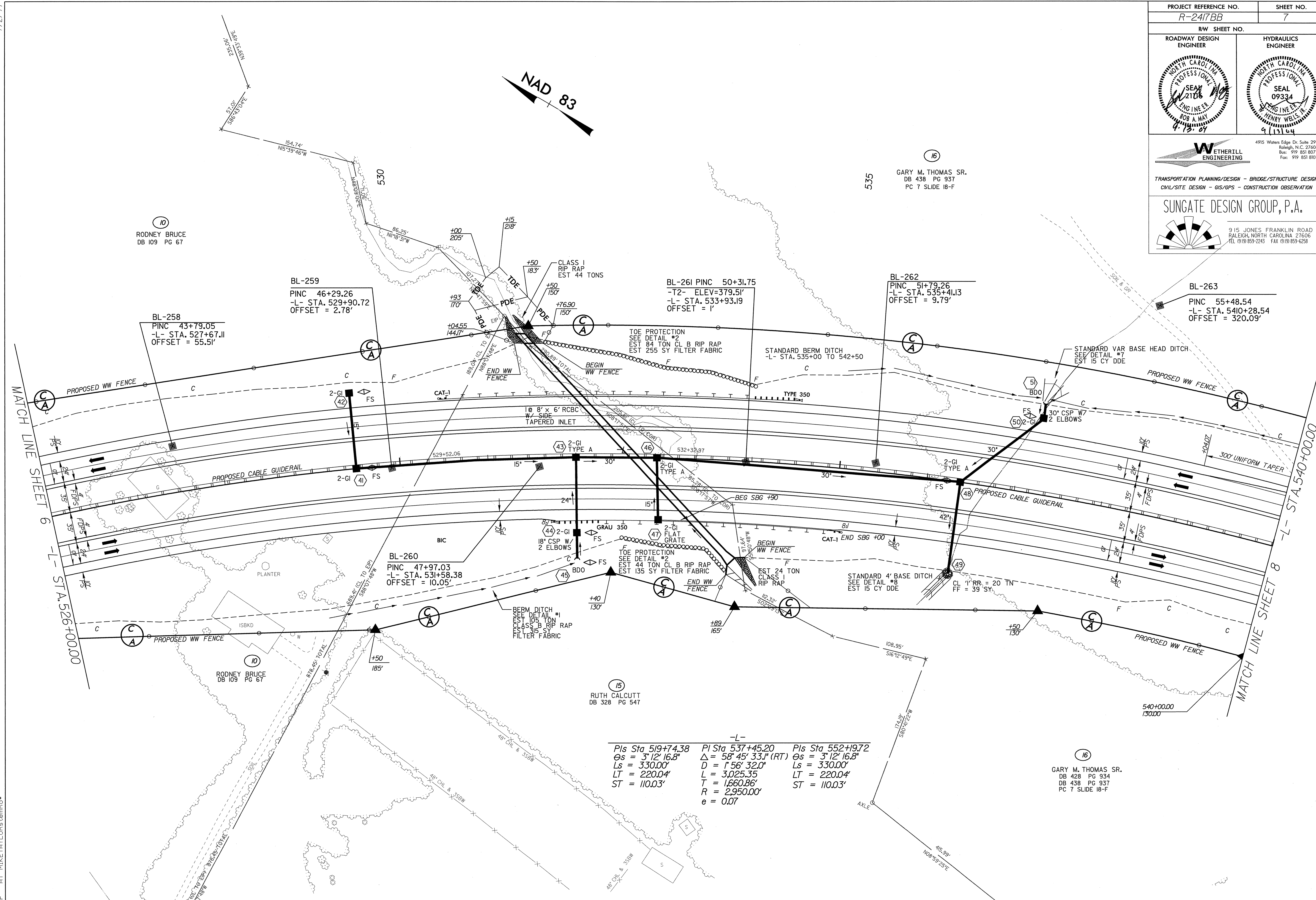


PROJECT REFERENCE NO. R-2417BB		SHEET NO. 7	
RW SHEET NO.		HYDRAULICS ENGINEER	
ROADWAY DESIGN ENGINEER		ENGINEER	
4915 Waters Edge Dr. Suite 295 Raleigh, N.C. 27606 Bus: 919 851 8077 Fax: 919 851 9107			
TRANSPORTATION PLANNING/DESIGN - BRIDGE/STRUCTURE DESIGN CIVIL/SITE DESIGN - GIS/GPS - CONSTRUCTION OBSERVATION			
SUNGATE DESIGN GROUP, P.A. 915 JONES FRANKLIN ROAD RALEIGH, NORTH CAROLINA 27606 TEL (919) 855-2243 FAX (919) 855-6258			



RODNEY BRUCE
DB 109 PG 67

BL-258
PINC 43+79.05
-L- STA. 527+67.11
OFFSET = 55.51'

BL-259
PINC 46+29.26
-L- STA. 529+90.72
OFFSET = 2.78'

BL-260
PINC 47+97.03
-L- STA. 531+58.38
OFFSET = 10.05'

BL-261 PINC 50+31.75
-T2- ELEV=379.51'
-L- STA. 533+93.19
OFFSET = 1'

GARY M. THOMAS SR.
DB 438 PG 937
PC 7 SLIDE 18-F

BL-262
PINC 51+79.26
-L- STA. 535+41.13
OFFSET = 9.79'

BL-263
PINC 55+48.54
-L- STA. 540+28.54
OFFSET = 320.09'

RUTH CALCUTT
DB 328 PG 547

GARY M. THOMAS SR.
DB 428 PG 934
DB 438 PG 937
PC 7 SLIDE 18-F

Pls Sta 519+74.38	Pl Sta 537+45.20	Pls Sta 552+19.72
$\Delta s = 3^{\circ}12'16.8''$	$\Delta = 58^{\circ}45'33.1'' (RT)$	$\Delta s = 3^{\circ}12'16.8''$
$Ls = 330.00'$	$D = 1^{\circ}56'32.0''$	$Ls = 330.00'$
$LT = 220.04'$	$L = 3,025.35'$	$LT = 220.04'$
$ST = 110.03'$	$T = 1,660.86'$	$ST = 110.03'$
	$R = 2,950.00'$	
	$e = 0.07$	

SEE SHEET 16 & 17 FOR -L- PROFILE

13-JUL-2004 13:33
 R:\R-2417bb\Rodney\Prj\8.N=2417bb.RDY..psh07.dgn
 AT MIKE TAYLOR