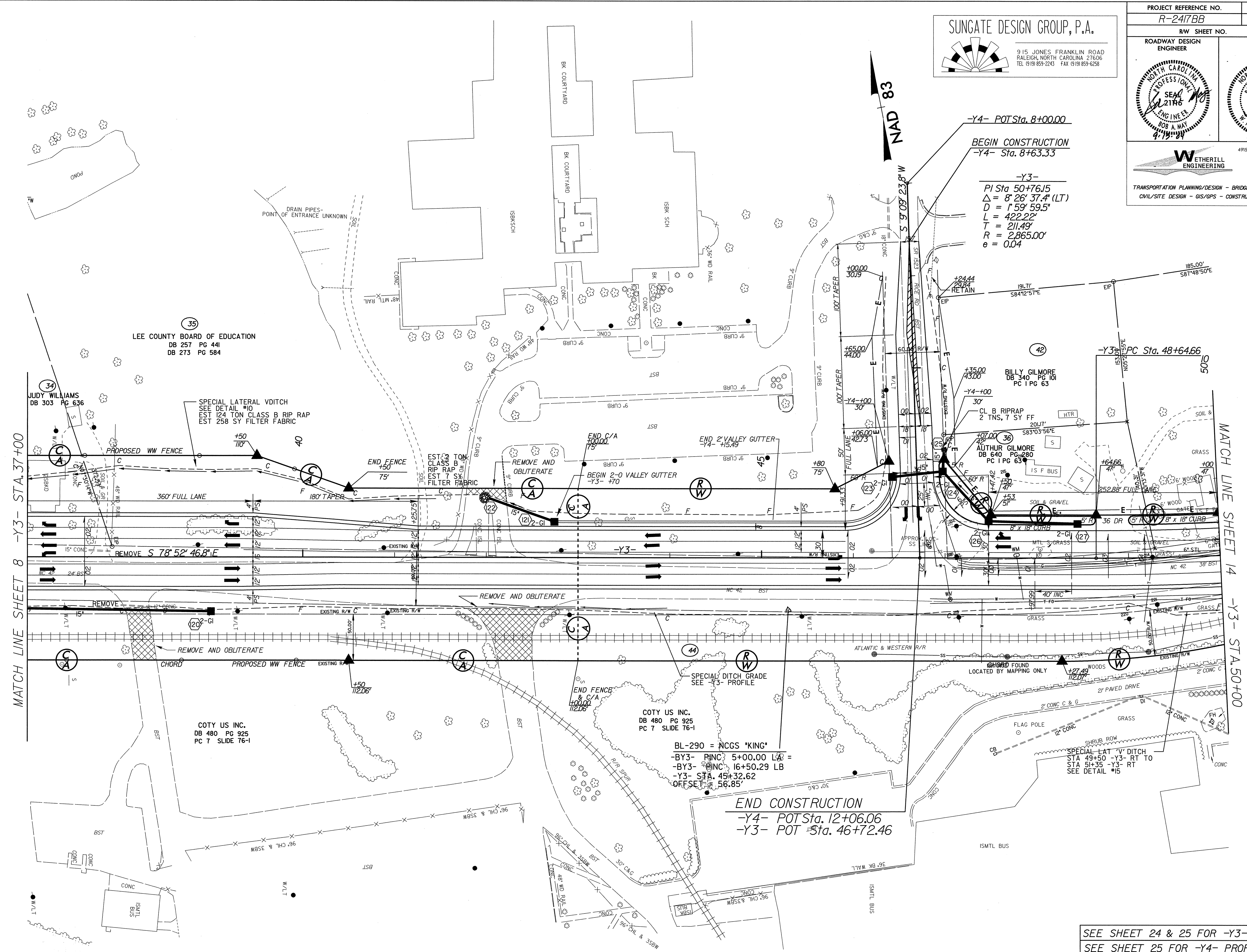


7/2/99

SUNGATE DESIGN GROUP, P.A.
 915 JONES FRANKLIN ROAD
 RALEIGH, NORTH CAROLINA 27606
 TEL 919 859-2243 FAX 919 859-9238

PROJECT REFERENCE NO. R-2417BB	SHEET NO. 13
R/W SHEET NO. ROADWAY DESIGN ENGINEER	HYDRAULICS ENGINEER
WETHERILL ENGINEERING	
4915 Waters Edge Dr. Suite 295 Raleigh, N.C. 27606 Bus: 919 851 8077 Fax: 919 851 8107	
TRANSPORTATION PLANNING/DESIGN - BRIDGE/STRUCTURE DESIGN CIVIL/SITE DESIGN - GIS/GPS - CONSTRUCTION OBSERVATION	



-Y4- POT Sta. 8+00.00
BEGIN CONSTRUCTION
-Y4- Sta. 8+63.33

-Y3-
 PI Sta. 50+76.15
 $\Delta = 8' 26' 37.4" (LT)$
 $D = 1' 59' 59.5"$
 $L = 422.22'$
 $T = 211.49'$
 $R = 2865.00'$
 $e = 0.04$

BL-290 = NCGS "KING"
 -BY3- PINC = 5+00.00 LB =
 -BY3- PINC = 16+50.29 LB
 -Y3- STA. 45+32.62
 OFFSET = 56.85'

END CONSTRUCTION
-Y4- POT Sta. 12+06.06
-Y3- POT Sta. 46+72.46

SEE SHEET 24 & 25 FOR -Y3- PROFILE
 SEE SHEET 25 FOR -Y4- PROFILE

13-SEP-2004 07:00
 P:\R-2417bb\Xp\p13.dgn
 AT: ERIN@SUNGATE.COM