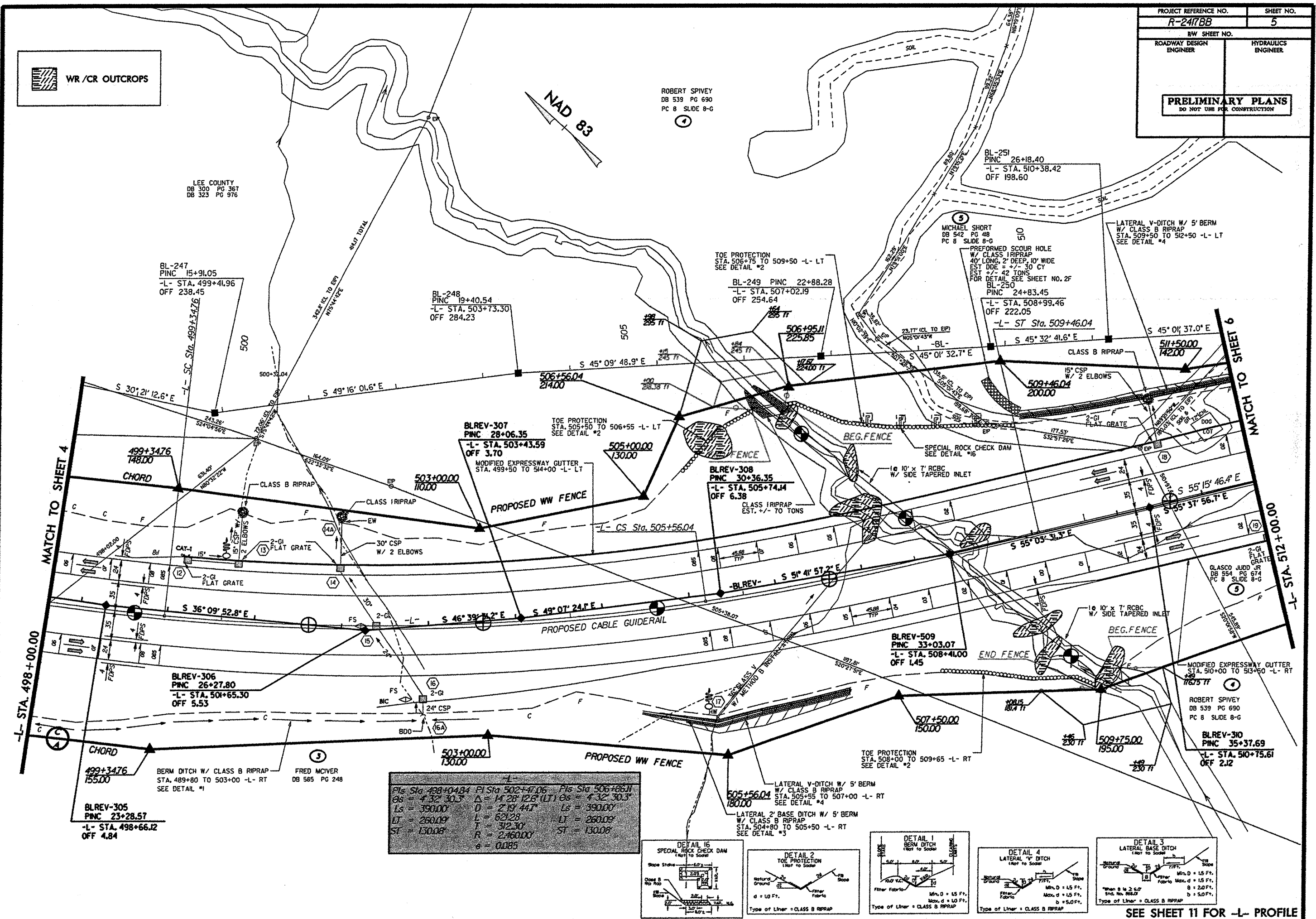


**WR /CR OUTCROPS**

LEE COUNTY  
DB 300 PG 367  
DB 323 PG 976

ROBERT SPIVEY  
DB 539 PG 690  
PC 8 SLIDE 8-G



BL-247  
PINC 15+91.05  
-L- STA. 499+41.96  
OFF 238.45

BL-248  
PINC 19+40.54  
-L- STA. 503+73.30  
OFF 284.23

BL-249  
PINC 22+88.28  
-L- STA. 507+02.19  
OFF 254.64

BL-251  
PINC 26+18.40  
-L- STA. 510+38.42  
OFF 198.60

MICHAEL SHORT  
DB 542 PG 48  
PC 8 SLIDE 8-G  
PREFORMED SCOUR HOLE  
W/ CLASS B RIPRAP  
40' LONG, 2' DEEP, 10' WIDE  
EST DDE = +/- 30 CY  
EST +/- 42 TONS  
FOR DETAIL SEE SHEET NO. 2F  
BL-250  
PINC 24+83.45  
-L- STA. 508+99.46  
OFF 222.05  
-L- ST Sta. 509+46.04

LATERAL V-DITCH W/ 5' BERM  
W/ CLASS B RIPRAP  
STA. 509+50 TO 512+50 -L- LT  
SEE DETAIL #4

BLREV-307  
PINC 28+06.35  
-L- STA. 503+43.59  
OFF 3.70  
MODIFIED EXPRESSWAY GUTTER  
STA. 499+50 TO 514+00 -L- LT

BLREV-308  
PINC 30+36.35  
-L- STA. 505+74.14  
OFF 6.38  
CLASS RIPRAP  
EST. +/- TO TONS

BLREV-509  
PINC 33+03.07  
-L- STA. 508+41.00  
OFF 145

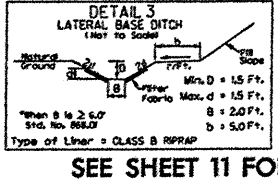
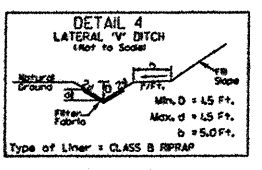
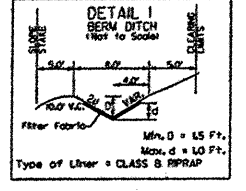
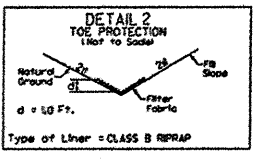
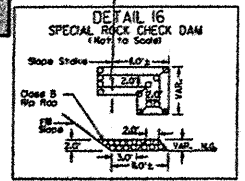
BLREV-306  
PINC 26+27.80  
-L- STA. 501+65.30  
OFF 5.53

ROBERT SPIVEY  
DB 539 PG 690  
PC 8 SLIDE 8-G  
MODIFIED EXPRESSWAY GUTTER  
STA. 510+00 TO 513+50 -L- RT  
17675 TT

BLREV-310  
PINC 35+37.69  
-L- STA. 510+75.61  
OFF 2.12

BLREV-305  
PINC 23+28.57  
-L- STA. 498+66.12  
OFF 4.84

PIs Sta 498+04.84	PI Sta 502+47.06	PIs Sta 506+86.11
Os = 4 32' 30.3"	Δs = 14 28' 12.6" (LT) Os = 4 32' 30.3"	
Ls = 390.00'	D = 2 19' 44.7"	Ls = 390.00'
LT = 260.00'	L = 521.28'	LT = 260.00'
ST = 130.08'	T = 312.30'	ST = 130.08'
	R = 2 460.00'	
	e = 0.085	



SEE SHEET 11 FOR -L- PROFILE