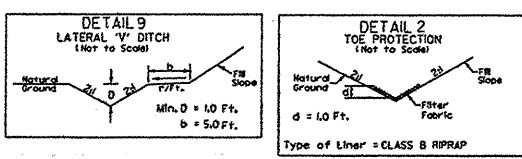


PROJECT REFERENCE NO. R-247BB	SHEET NO. 9
RW SHEET NO.	
ROADWAY DESIGN ENGINEER	HYDRAULICS ENGINEER
PRELIMINARY PLANS DO NOT USE FOR CONSTRUCTION	

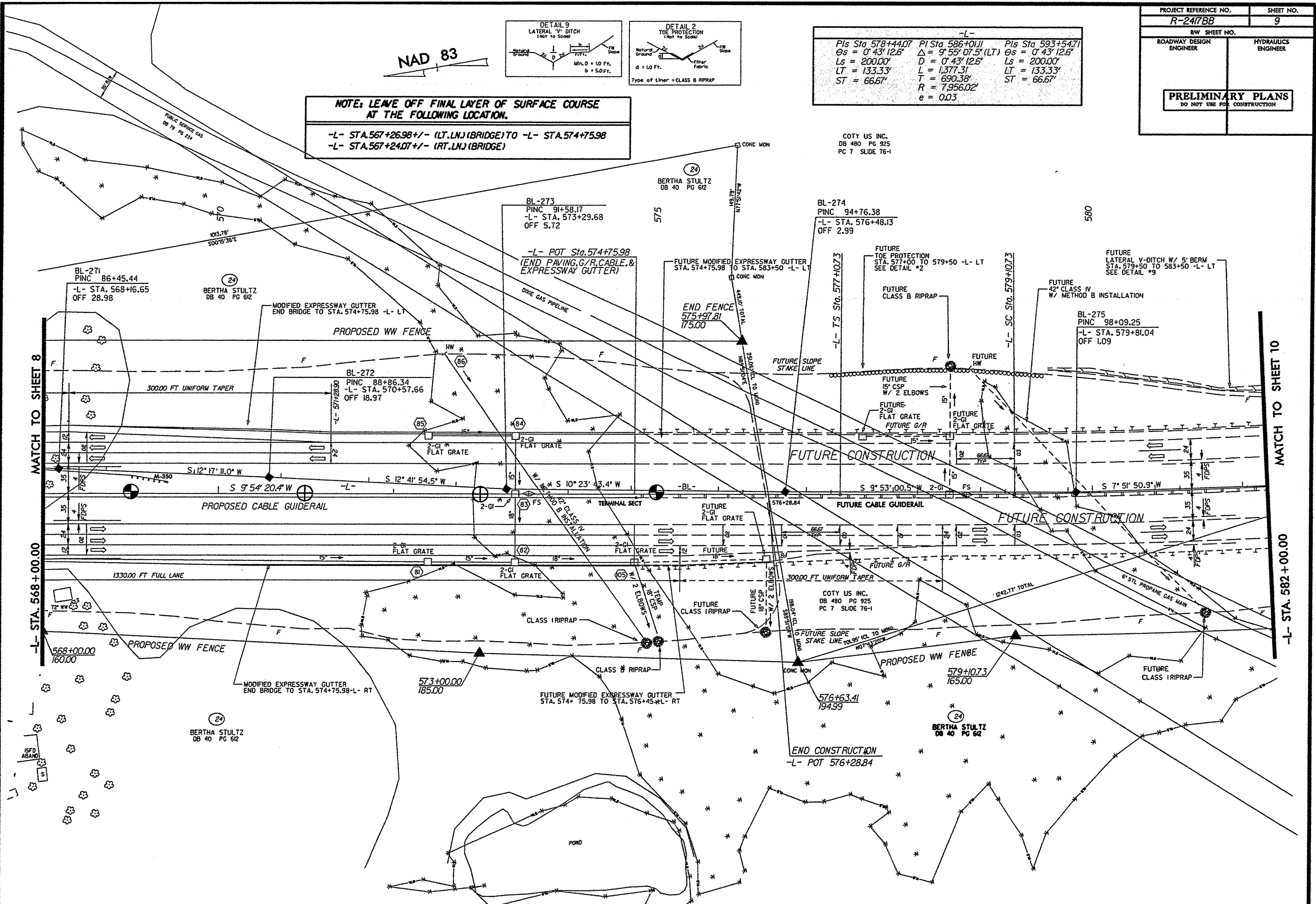


-L-		
PIs Sta 578+44.07 Os = 0° 43' 12.6"	PI Sta 586+0.11 Δ = 9° 55' 07.5" (LT)	PIs Sta 593+54.71 Os = 0° 43' 12.6"
Ls = 200.00'	D = 0° 43' 12.6"	Ls = 200.00'
LT = 133.33'	L = 1,377.31'	LT = 133.33'
ST = 66.67'	T = 690.38'	ST = 66.67'
	R = 7,956.02'	
	e = 0.03	

NOTE: LEAVE OFF FINAL LAYER OF SURFACE COURSE AT THE FOLLOWING LOCATION.

-L- STA. 567+26.98 +/- (LT. LN.) (BRIDGE) TO -L- STA. 574+75.98
 -L- STA. 567+24.07 +/- (RT. LN.) (BRIDGE)

COTY US INC.
DB 480 PG 925
PC 7 SLIDE 76-1



SEE SHEET 16 FOR -L- PROFILE