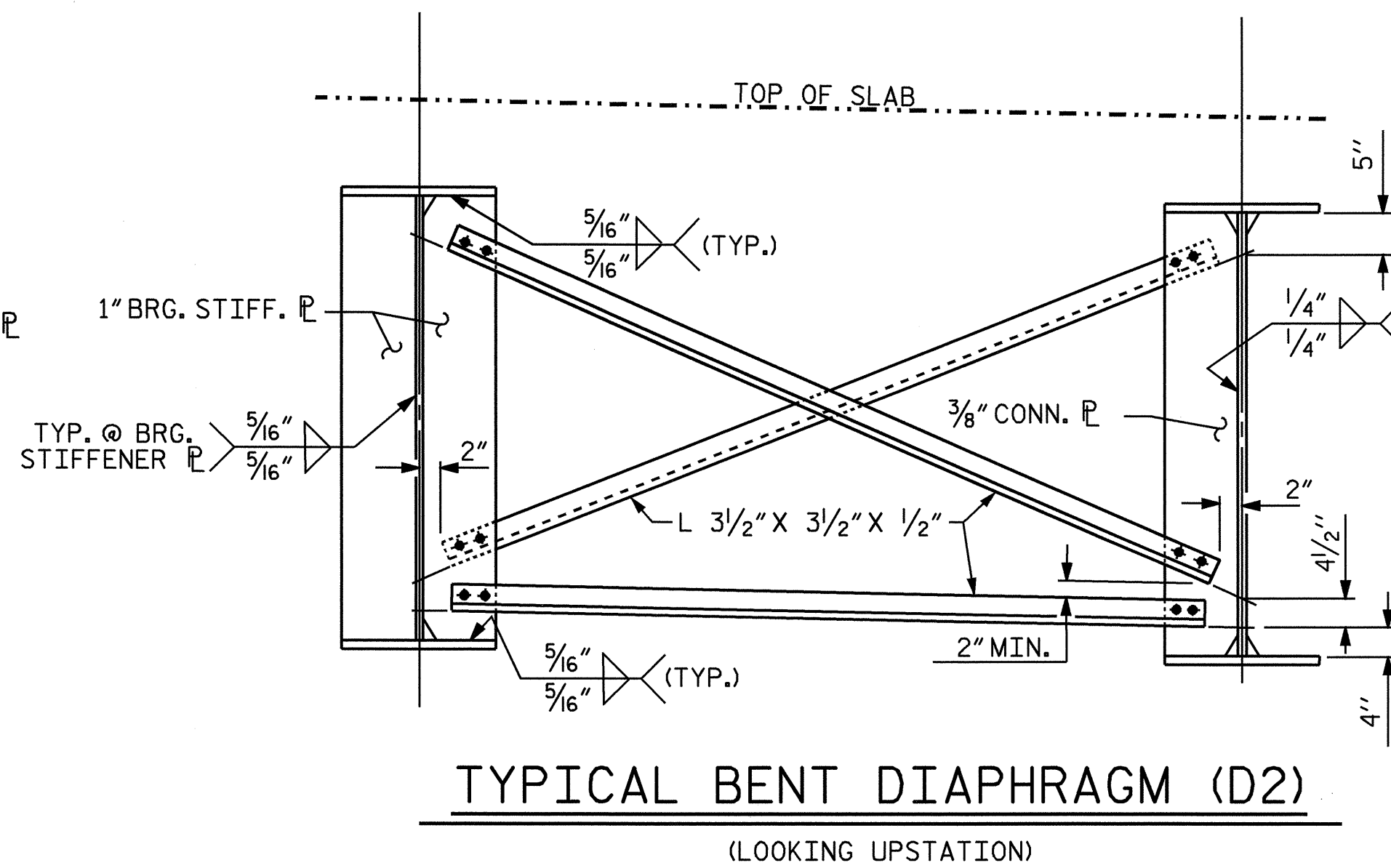
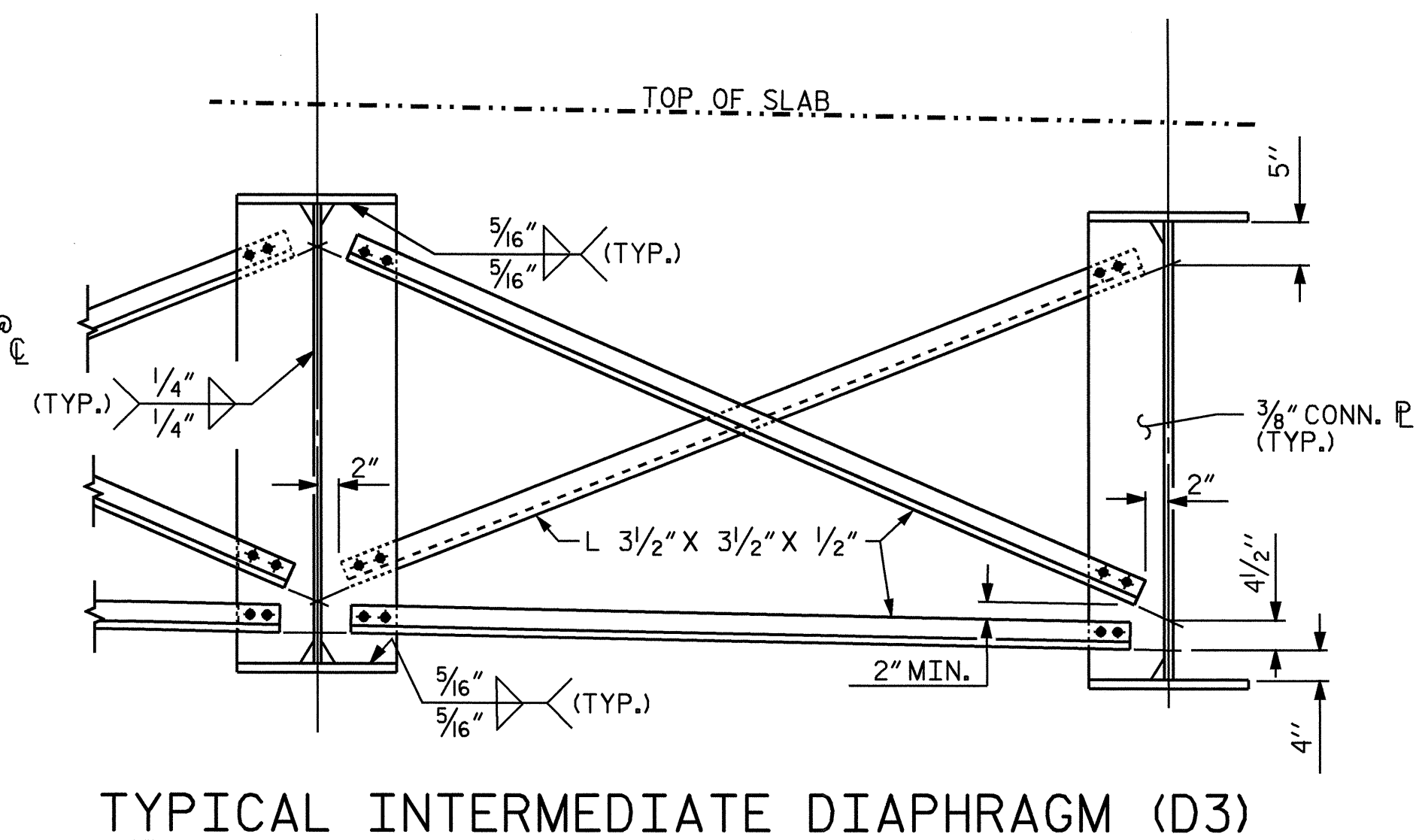


TYPICAL END BENT DIAPHRAGM (D1)

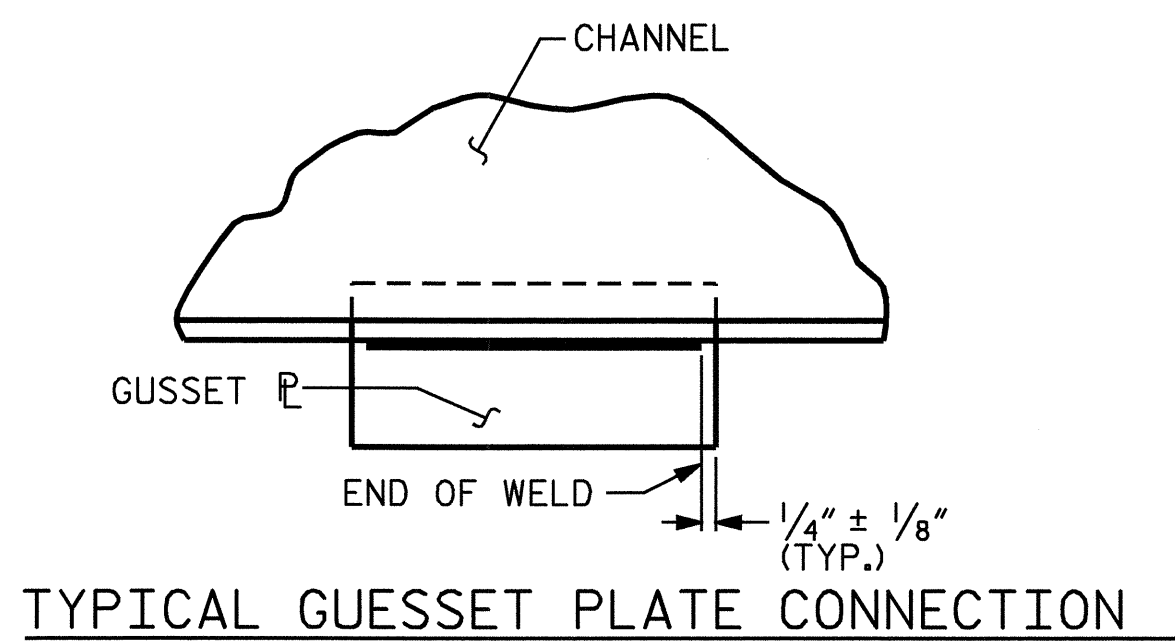


TYPICAL BENT DIAPHRAGM (D2)

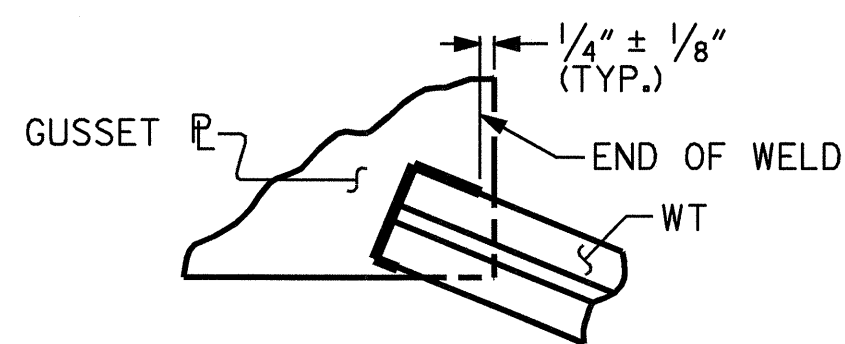
(LOOKING UPSTATION)



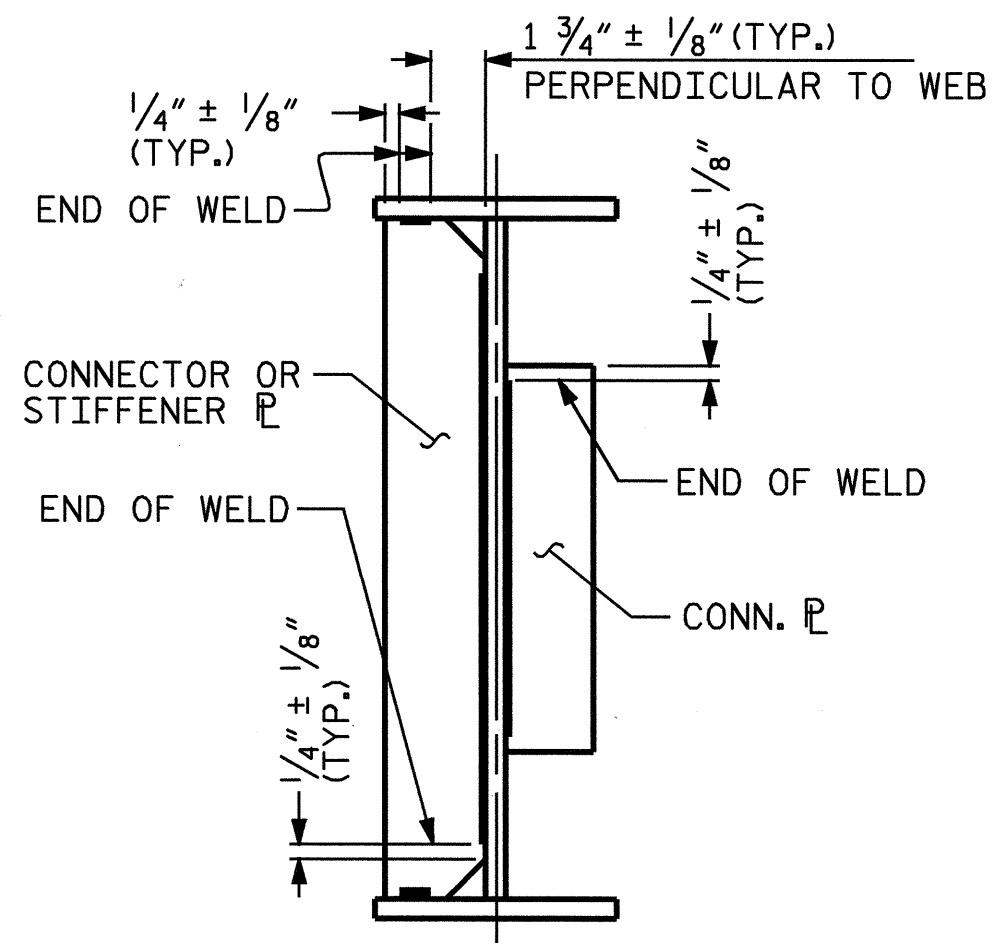
TYPICAL INTERMEDIATE DIAPHRAGM (D3)



TYPICAL GUSSET PLATE CONNECTION

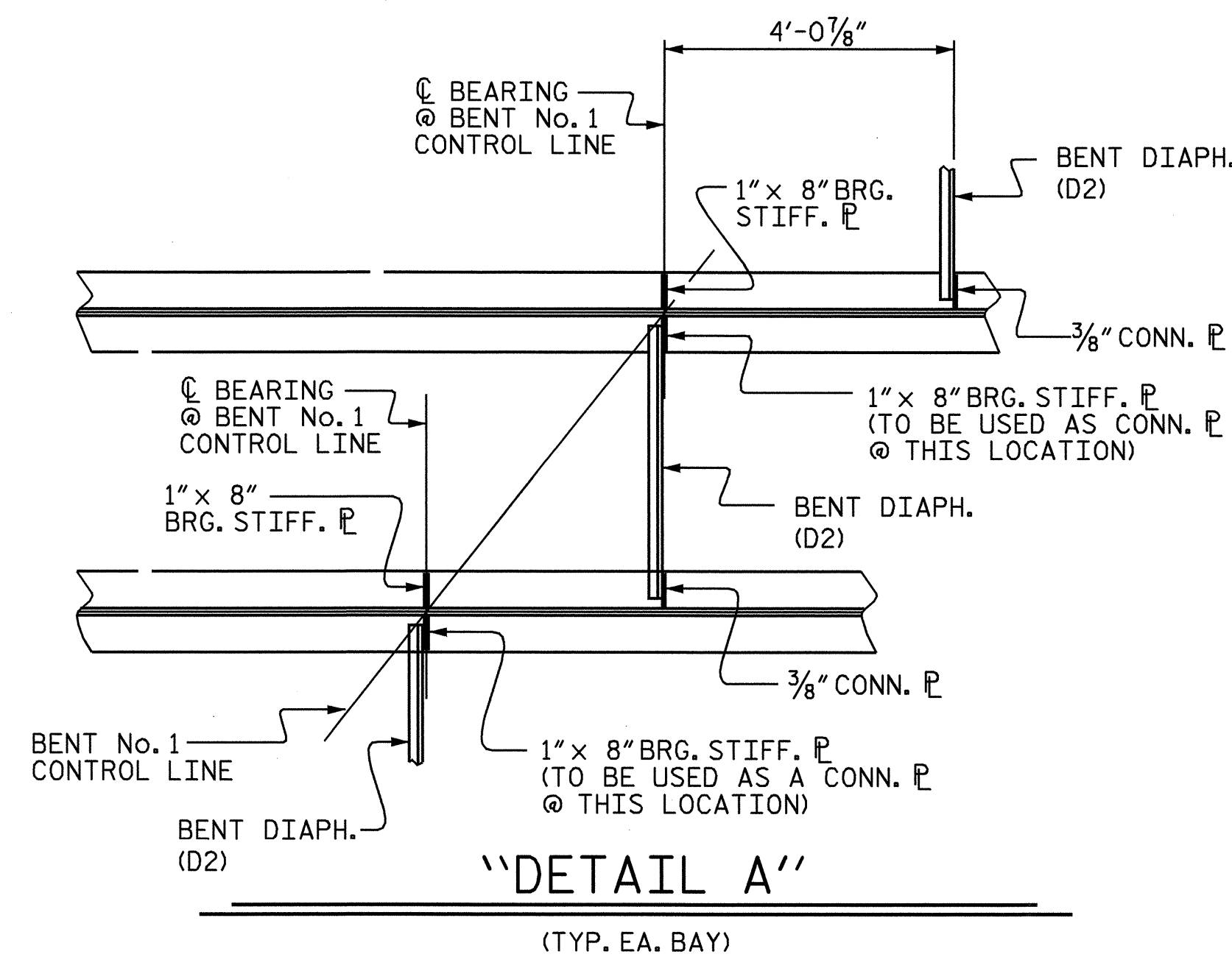


TYPICAL "TEE" TO GUSSET PLATE CONNECTION



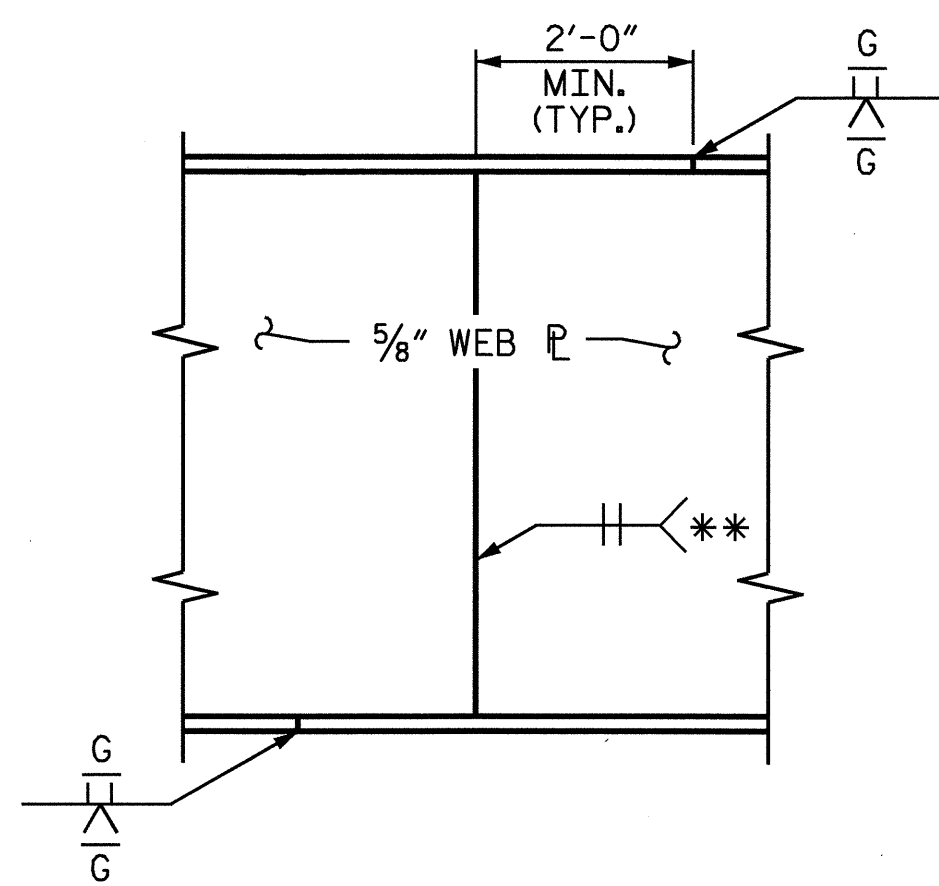
TYPICAL STIFFENER OR CONNECTOR PLATE CONNECTIONS

WELD TERMINATION DETAILS



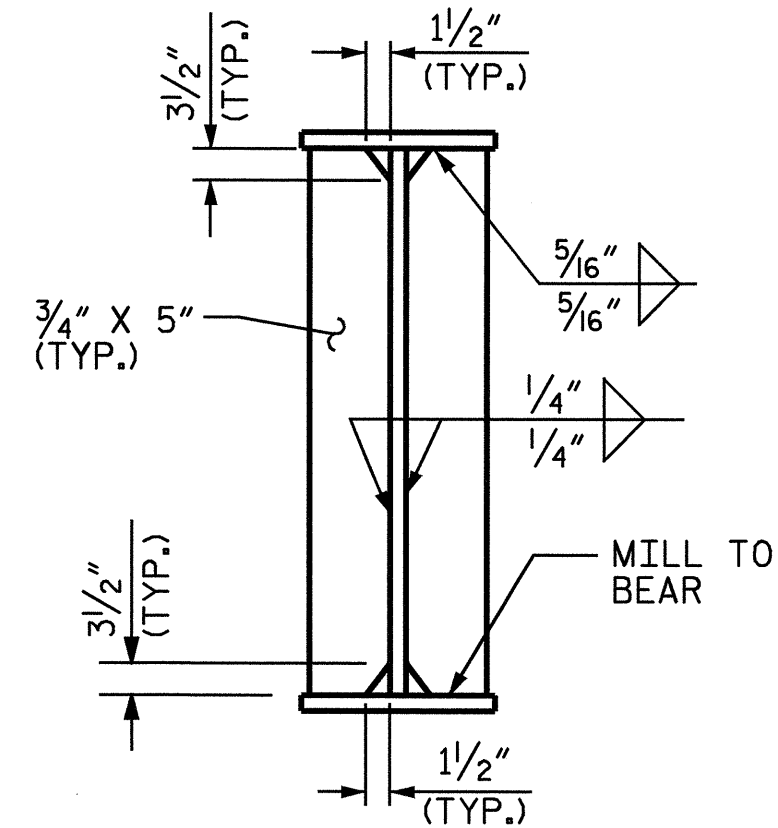
"DETAIL A"

(TYP. EA. BAY)



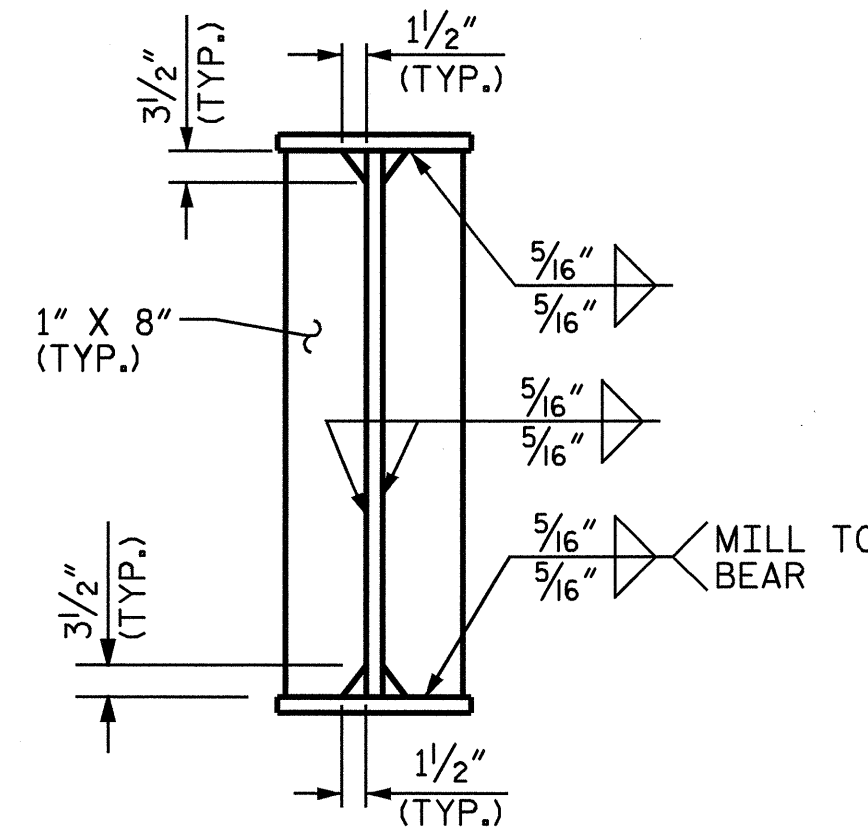
PERMISSIBLE SHOP FLANGE & WEB SPLICE

\*GRIND SMOOTH AND FLUSH ON OUTSIDE OF EXTERIOR GIRDER



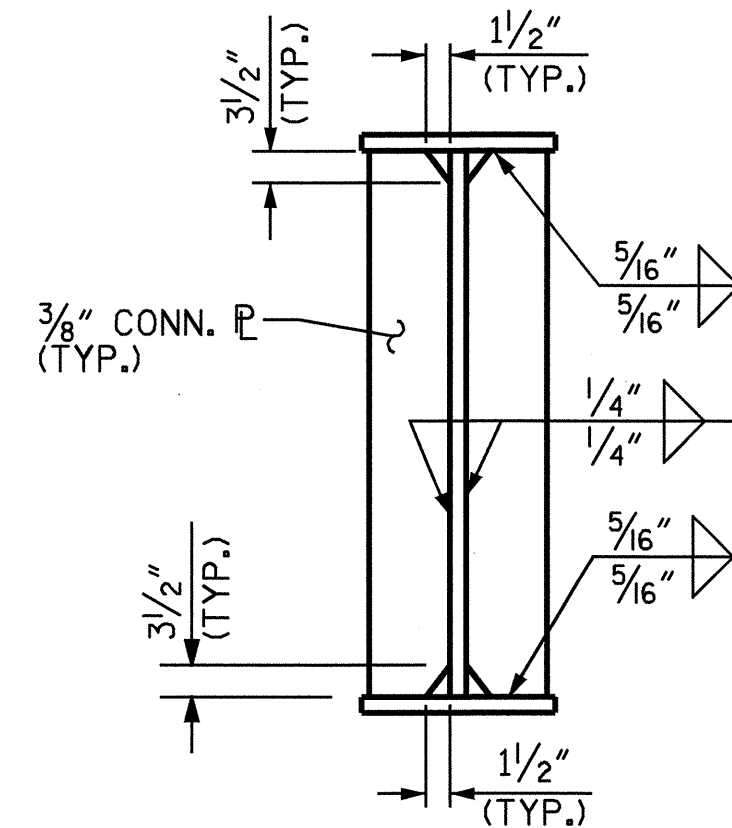
BEARING STIFFENER

(AT END BENTS)



BEARING STIFFENER

(AT BENT No. 1)



CONNECTOR PLATE

PER BRIDGE WELDING CODE FIG. 2.3(C). BEVEL IF NECESSARY AT END BENTS



PROJECT NO. R-2417BB  
LEE COUNTY  
STATION: 519+42.20 -L-

SHEET 2 OF 3

STATE OF NORTH CAROLINA  
DEPARTMENT OF TRANSPORTATION  
RALEIGH  
SUPERSTRUCTURE  
STRUCTURAL STEEL  
DETAILS

REVISIONS						SHEET NO.
NO.	BY:	DATE:	NO.	BY:	DATE:	S-10
1			3			TOTAL SHEETS
2			4			78

DRAWN BY: M. ALLEN DATE: 8/03  
CHECKED BY: B.N. GRADY DATE: 11/03

27-AUG-2004 09:20  
w:\squadw\2417BB\mallen\lmcrostation\R2417BB\_sd\_SS-01.dgn  
bngrady