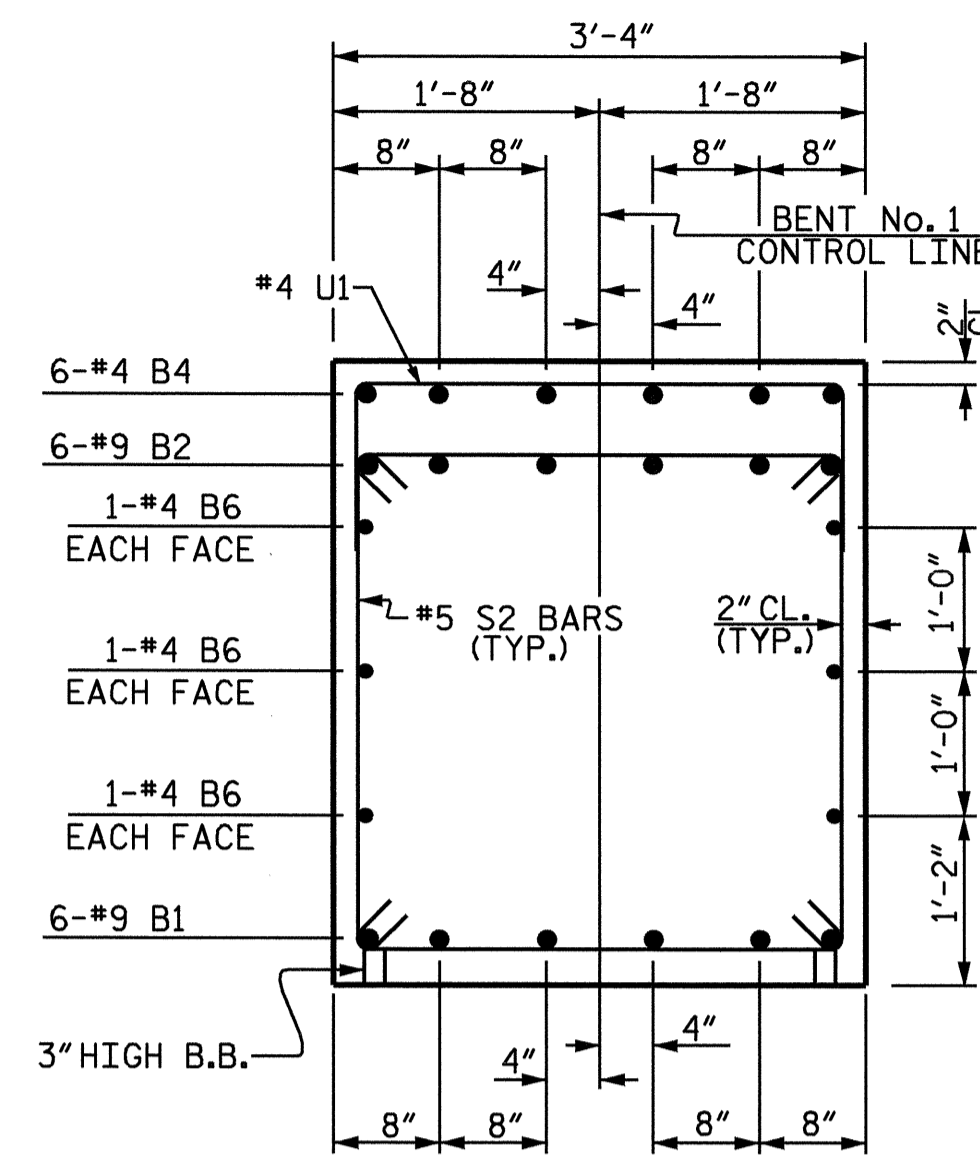
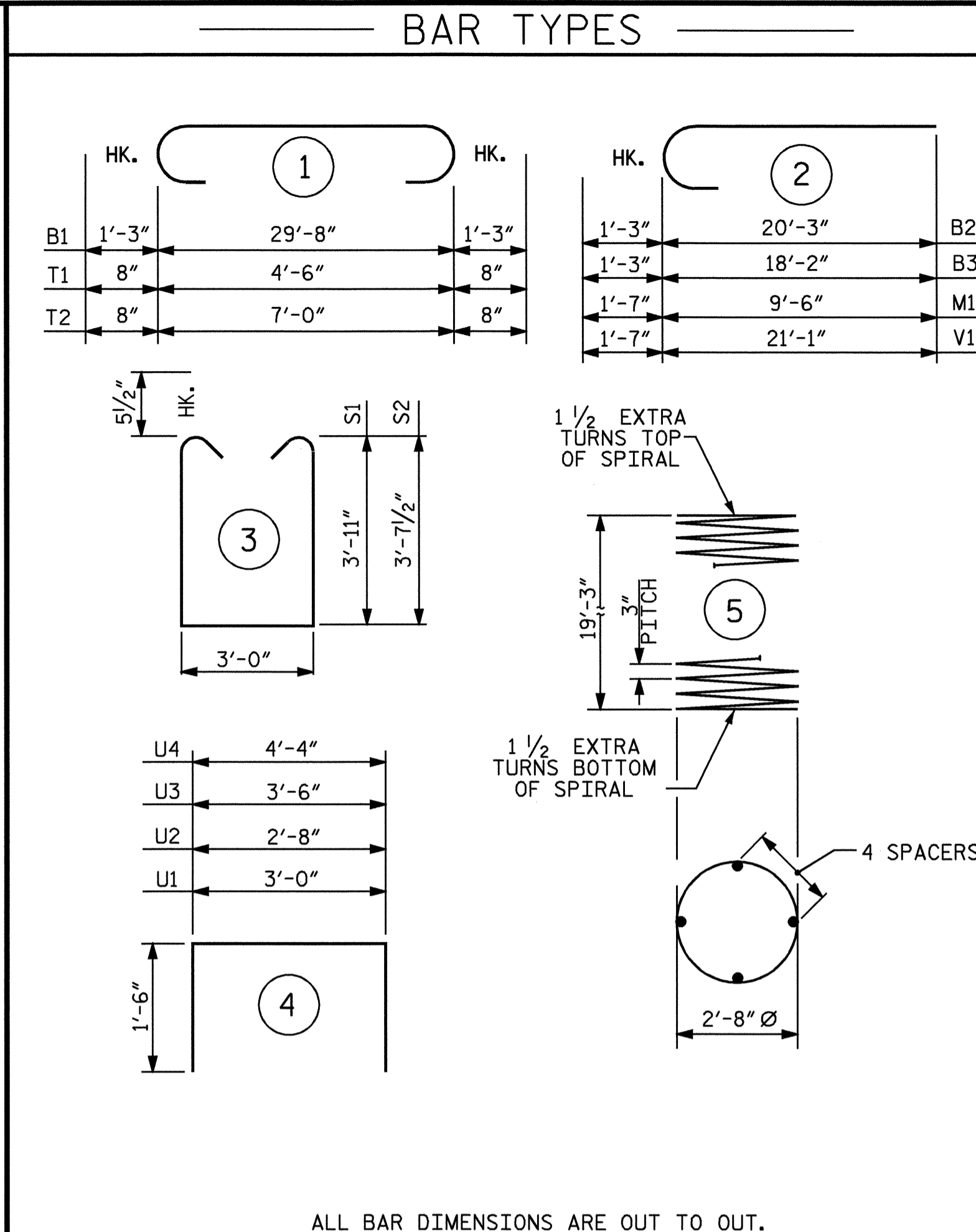


SECTION X-X

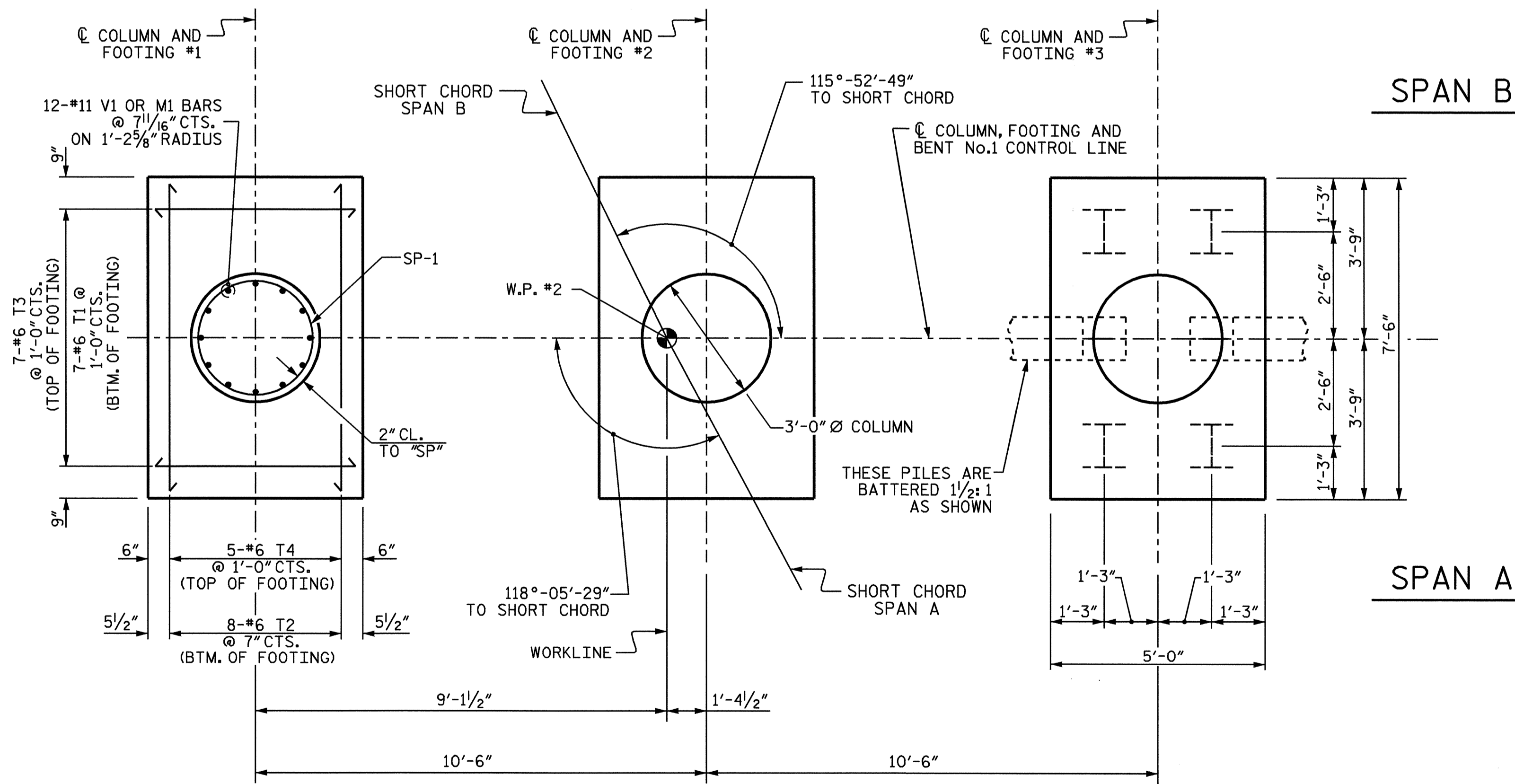


SECTION Y-Y



ALL BAR DIMENSIONS ARE OUT TO OUT.

BILL OF MATERIAL					
BENT NO. 1					
BAR NO	SIZE	TYPE	LENGTH	WEIGHT	
B1	6	9	1	32'-2"	656
B2	6	9	2	21'-6"	439
B3	6	9	2	19'-5"	396
B4	6	4	STR	11'-1"	44
B5	6	4	STR	2'-5"	10
B6	6	4	STR	29'-10"	120
B7	3	4	STR	3'-0"	6
M1	36	11	2	11'-1"	2120
S1	25	5	3	11'-9"	306
S2	13	5	3	11'-2"	151
T1	21	6	1	5'-10"	184
T2	24	6	1	8'-4"	300
T3	21	6	STR	4'-8"	147
T4	15	6	STR	7'-2"	161
U1	24	4	4	6'-0"	96
U2	7	4	4	5'-8"	26
U3	3	4	4	6'-6"	13
U4	3	4	4	7'-4"	15
V1	36	11	2	22'-8"	4335
REINFORCING STEEL				LBS.	9525
SP-1	3	*	5	660'-1"	1323
SPIRAL REINFORCING STEEL				LBS.	1323
* THE SP-1 SPIRAL REINFORCING STEEL SHALL BE W20 OR D-20 COLD DRAWN WIRE OR #4 PLAIN OR DEFORMED BAR.					
HP 12 X 53 STEEL PILES NO. 18					360 FT.
CLASS A CONCRETE BREAKDOWN :					
POUR #1 - (FOOTINGS)					13.5 C.Y.
POUR #2 (COLUMNS)					14.9 C.Y.
POUR #3 - (CAP)					16.2 C.Y.
TOTAL					44.6 C.Y.

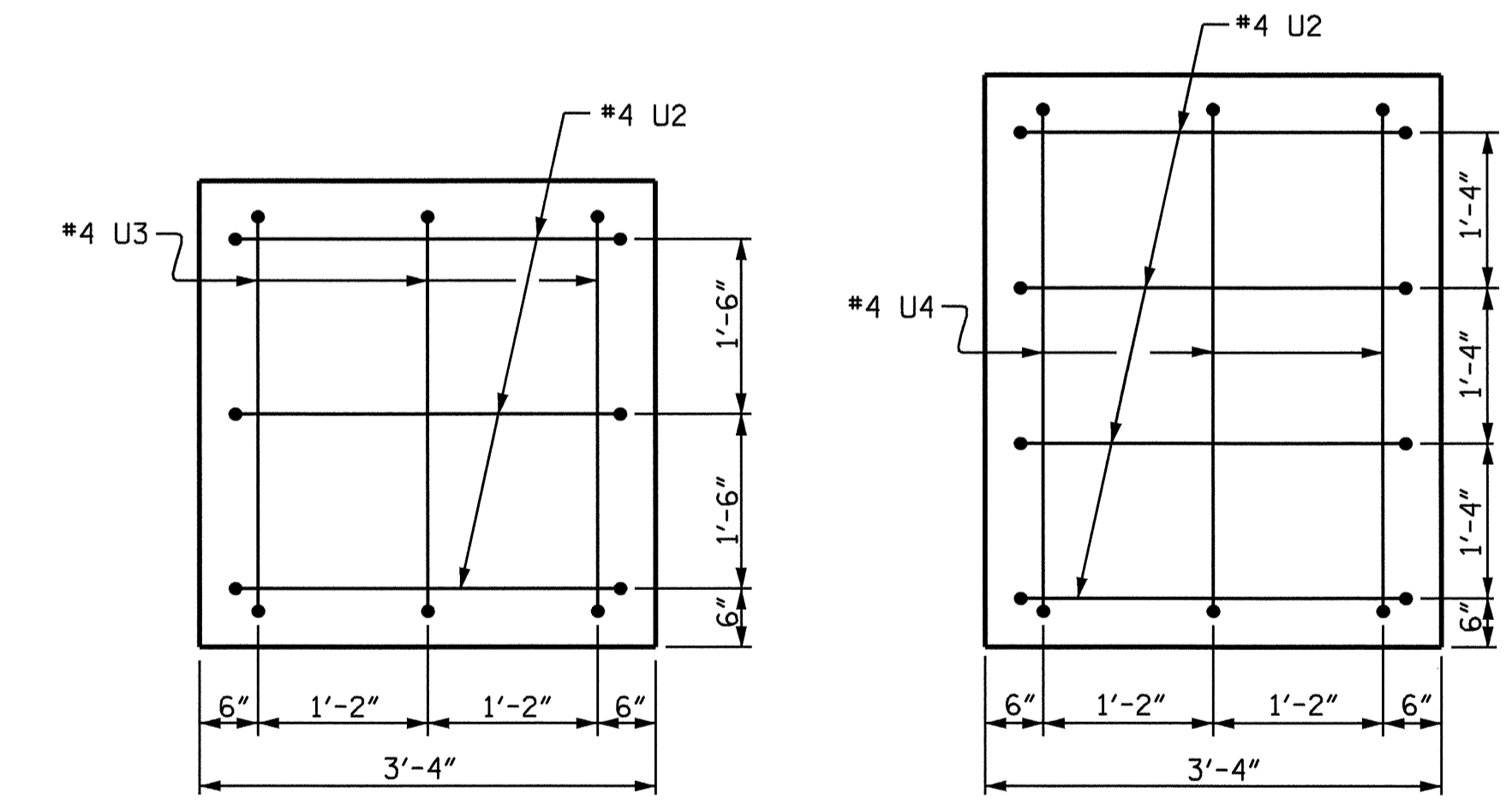


PLAN OF FOOTINGS

(PILE PLACEMENT, REINFORCING STEEL AND DIMENSIONS ARE TYPICAL FOR EACH FOOTING & COLUMN)

SPAN B

SPAN A



VIEW A-A

VIEW B-B

PROJECT NO. R-2417BB
LEE COUNTY
STATION: 519+42.20 -L-

SHEET 2 OF 2

STATE OF NORTH CAROLINA
DEPARTMENT OF TRANSPORTATION
RALEIGH

SUBSTRUCTURE
BENT No. 1

REVISIONS				SHEET NO.	
NO.	BY:	DATE:	NO.	BY:	DATE:
1			3		
2			4		

TOTAL SHEETS: 78



DRAWN BY : A. V. ROYAL DATE : 1-04
CHECKED BY : D. E. PETREY DATE : 2-04

27-AUG-2004 09:15
w:\equadw\2417BB\aroyal\microstation\R2417BB.sd.B1.01.dgn
bngrady