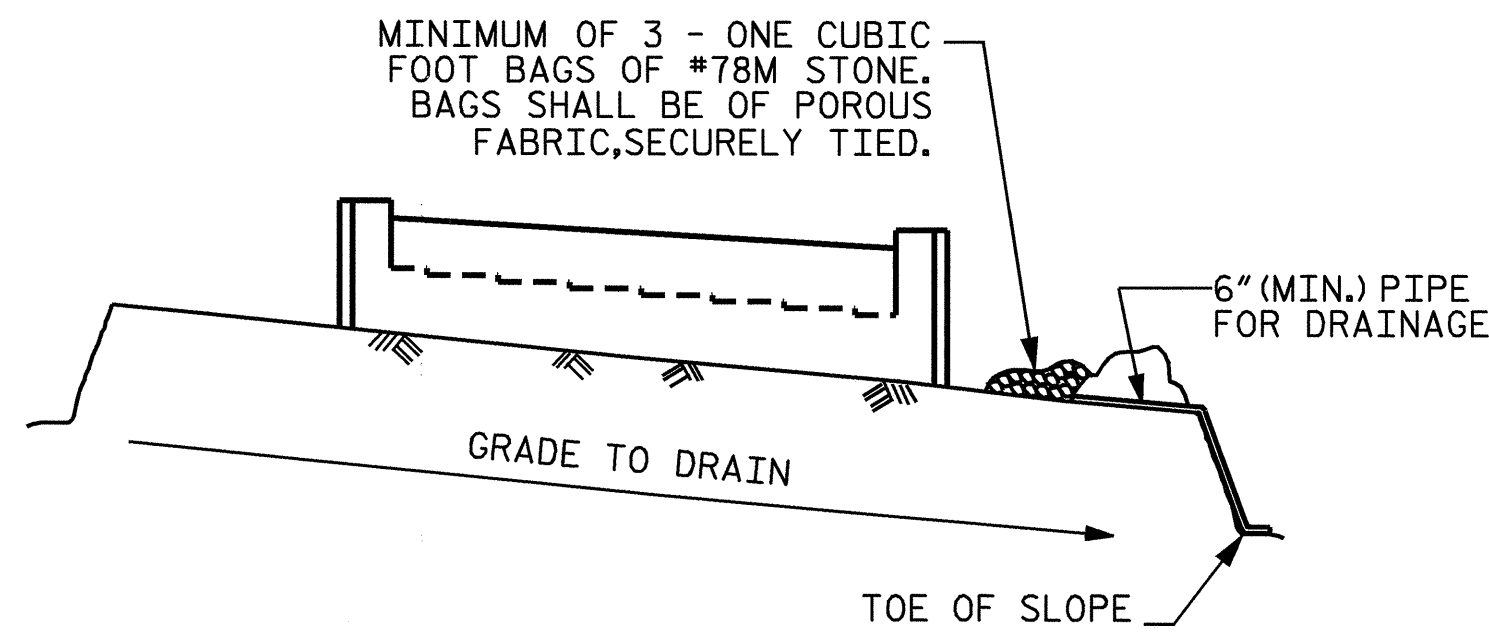


*POSITION OF PILE DURING WELDING.

PILE SPLICE DETAILS

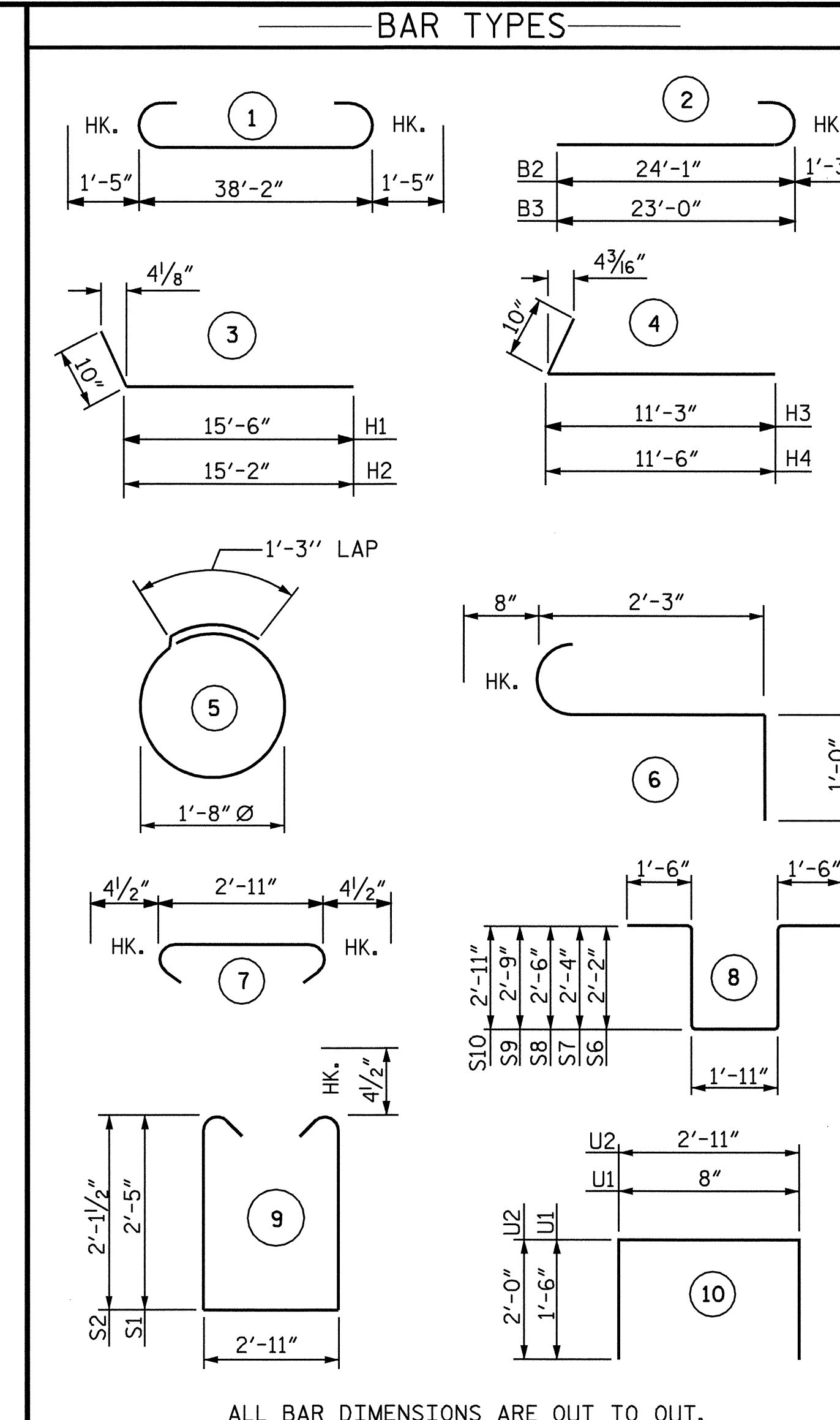


BAGGED STONE AND PIPE SHALL BE PLACED IMMEDIATELY AFTER COMPLETION OF END BENT EXCAVATION. PIPE MAY BE EITHER CONCRETE, CORRUGATED STEEL, CORRUGATED ALUMINUM ALLOY, OR CORRUGATED PLASTIC. PERFORATED PIPE WILL NOT BE ALLOWED.

BAGGED STONE SHALL REMAIN IN PLACE UNTIL THE ENGINEER DIRECTS THAT IT BE REMOVED. THE CONTRACTOR SHALL REMOVE AND DISPOSE OF SILT ACCUMULATIONS AT BAGGED STONE WHEN SO DIRECTED BY THE ENGINEER. BAGS SHALL BE REMOVED AND REPLACED WHENEVER THE ENGINEER DETERMINES THAT THEY HAVE DETERIORATED AND LOST THEIR EFFECTIVENESS.

NO SEPARATE PAYMENT WILL BE MADE FOR THIS WORK AND THE ENTIRE COST OF THIS WORK SHALL BE INCLUDED IN THE UNIT CONTRACT PRICE BID FOR THE SEVERAL PAY ITEMS.

TEMPORARY DRAINAGE AT END BENT

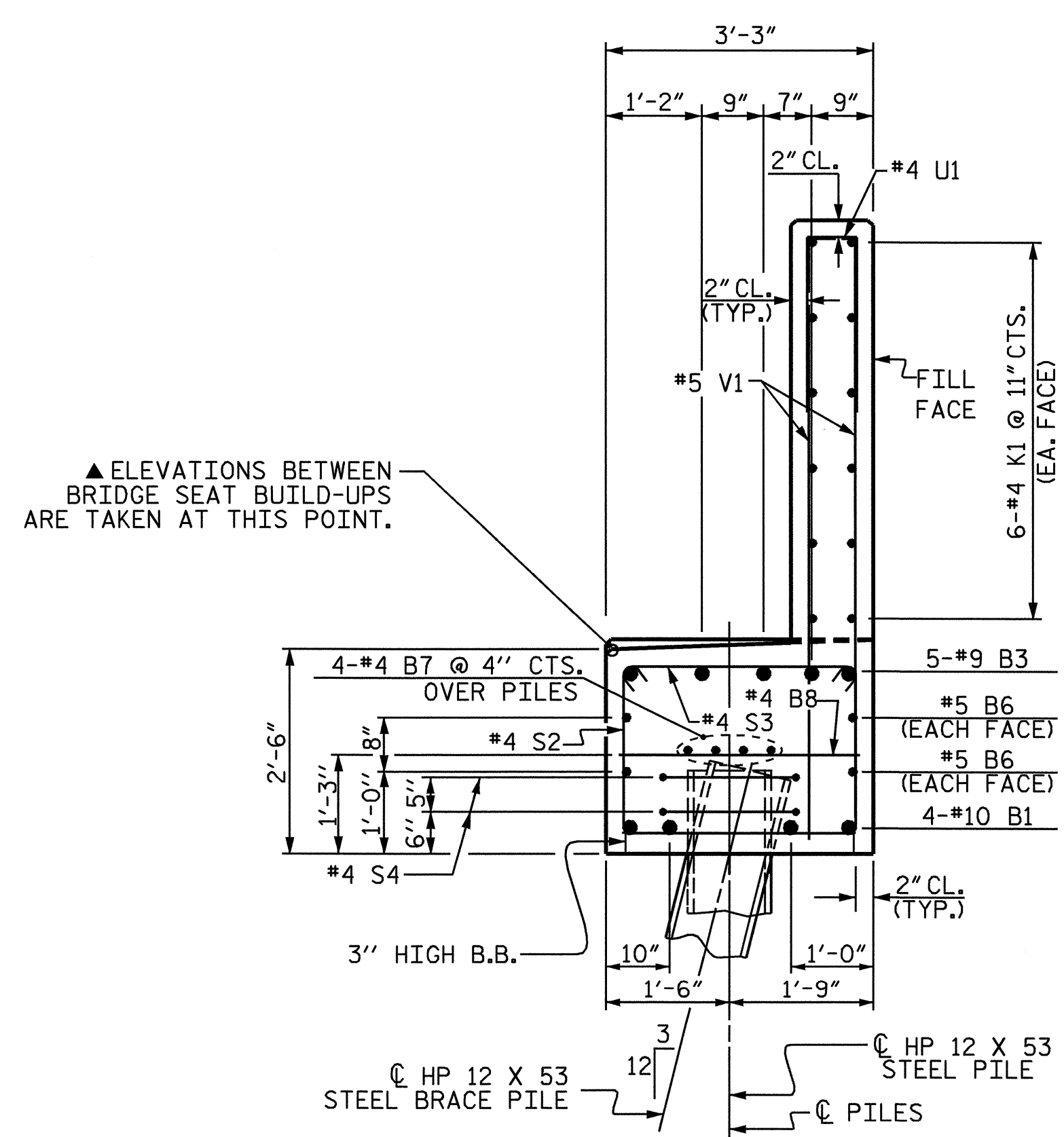


ALL BAR DIMENSIONS ARE OUT TO OUT.

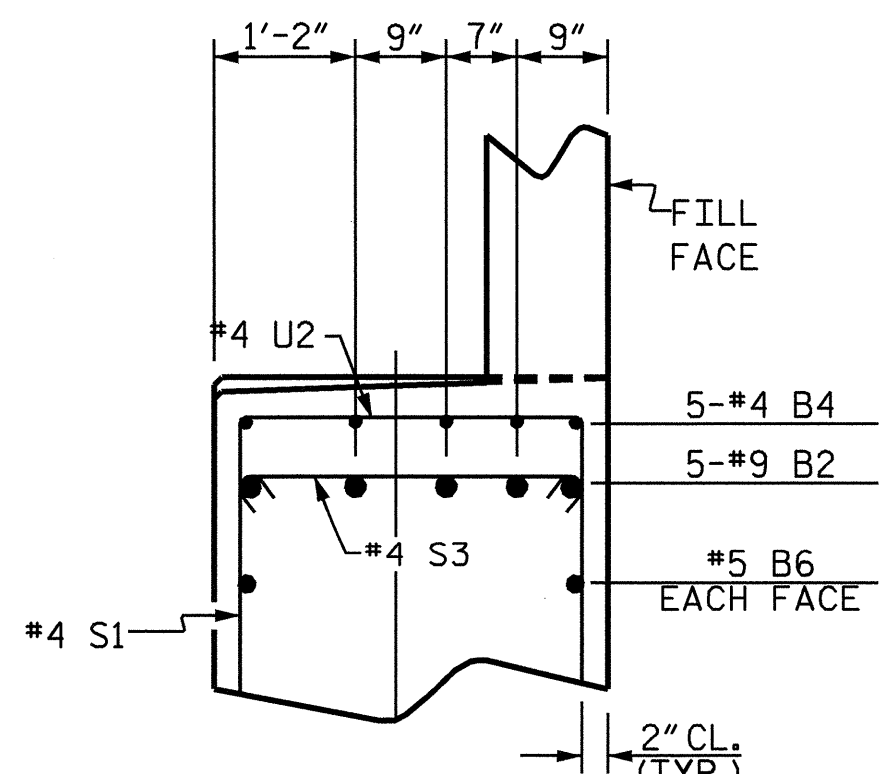
BILL OF MATERIAL					
END BENT No. 2					
BAR NO	SIZE	TYPE	LENGTH	WEIGHT	
B1	4	10	1	41'-0"	706
B2	5	9	2	25'-4"	431
B3	5	9	2	24'-3"	412
B4	5	4	STR	14'-0"	47
B5	5	4	STR	2'-4"	8
B6	4	5	STR	38'-4"	160
B7	8	4	STR	20'-5"	109
B8	13	4	STR	2'-11"	25
B9	4	4	STR	3'-7"	10
B10	4	4	STR	2'-10"	8
B11	4	6	STR	3'-8"	22
H1	11	5	3	16'-4"	187
H2	11	5	3	16'-0"	184
H3	10	5	4	12'-1"	126
H4	10	5	4	12'-4"	129
K1	24	4	STR	20'-5"	327
K2	8	4	STR	2'-9"	15
S1	26	4	9	8'-6"	148
S2	15	4	9	7'-11"	79
S3	41	4	7	3'-8"	100
S4	12	4	5	6'-6"	52
S5	6	6	6	3'-11"	35
S6	2	6	8	9'-3"	28
S7	2	6	8	9'-7"	29
S8	2	6	8	9'-11"	30
S9	2	6	8	10'-5"	31
S10	2	6	8	10'-9"	32
U1	33	4	10	3'-8"	81
U2	13	4	10	6'-11"	60
V1	66	5	STR	7'-6"	516
V2	40	5	STR	9'-8"	403
V3	32	5	STR	8'-8"	289
REINFORCING STEEL		LBS.			4819

CLASS A CONCRETE BREAKDOWN	
POUR #1 (CAP & LOWER WING)	17.1 C.Y.
POUR #2 (BACKWALL & UPPER WING)	15.0 C.Y.
TOTAL CLASS A CONCRETE	32.1 C.Y.

HP 12 X 53 STEEL PILES
NO. 8 360 FEET



SECTION A-A



PARTIAL SECTION B-B

PROJECT NO. R-2417BB
LEE COUNTY
STATION: 519+42.20 -L-

SHEET 3 OF 3

REVISIONS					SHEET NO.
NO.	BY:	DATE:	NO.	DATE:	S-26
1			3		TOTAL SHEETS 78
2			4		



DRAWN BY : A. V. ROYAL DATE : 01-04
CHECKED BY : P. C. BREWER DATE : 01-04