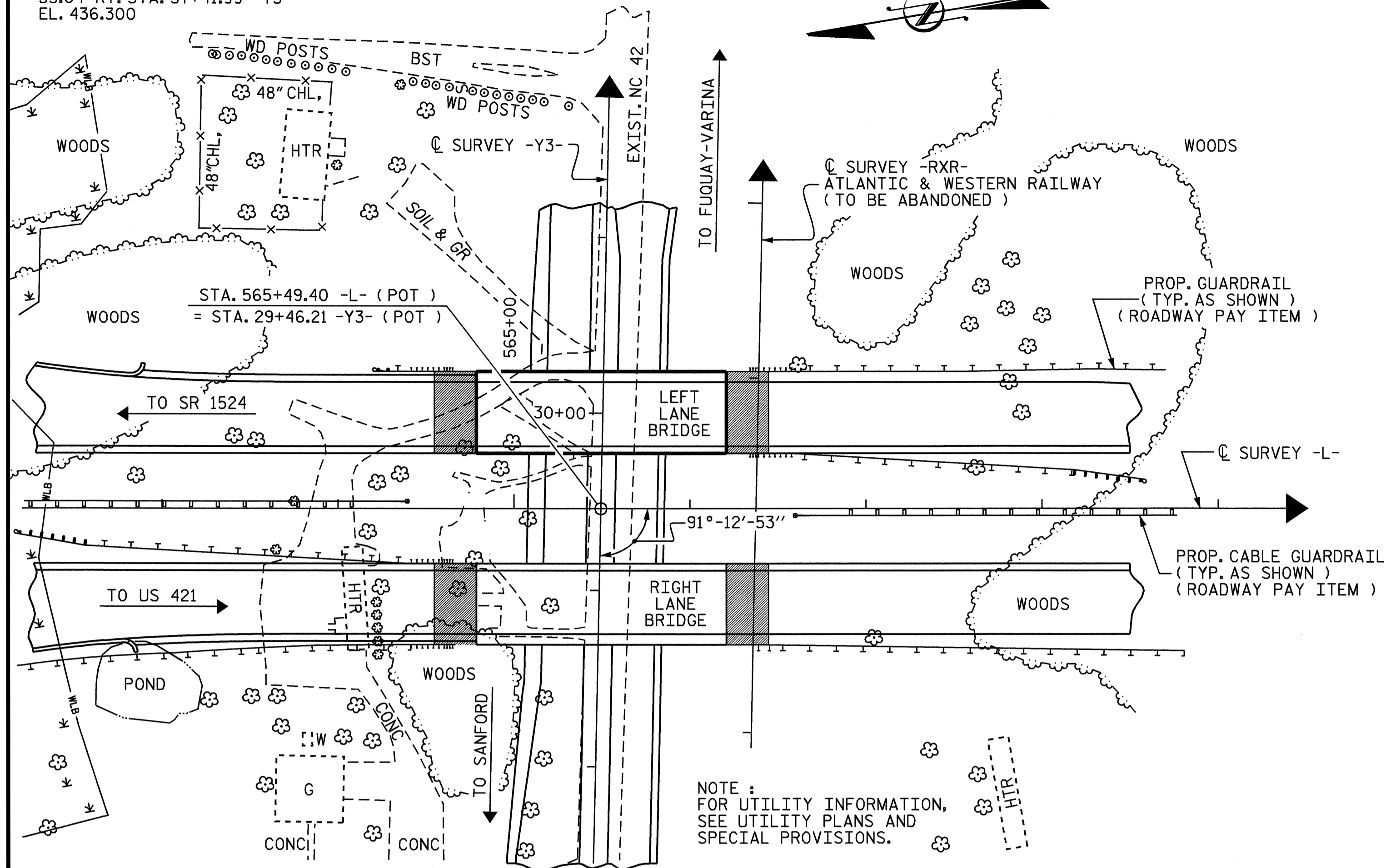


BM #24
 R/R SPIKE IN BASE OF POWER POLE
 55.04' RT. STA. 37+41.99 -Y3-
 EL. 436.300



NOTE:
 FOR UTILITY INFORMATION,
 SEE UTILITY PLANS AND
 SPECIAL PROVISIONS.

LOCATION SKETCH

TOTAL BILL OF MATERIAL

LEFT LANE BRIDGE	REINFORCED CONCRETE DECK SLAB	GROOVING BRIDGE FLOORS	CLASS A CONCRETE	BRIDGE APPROACH SLABS	REINFORCING STEEL	STRUCTURAL STEEL	HP 12 X 53 STEEL PILES		CONCRETE BARRIER RAIL	4" SLOPE PROTECTION	ELASTOMERIC BEARINGS	EVAZOTE JOINT SEALS
	SQ. FT.	SQ. FT.	CU. YDS.	LUMP SUM	LBS.	APPROX. LBS.	NO.	LIN. FT.	LIN. FT.	SQ. YDS.	LUMP SUM	LUMP SUM
SUPERSTRUCTURE	6,890	8,131				276,000			279.79		LUMP SUM	LUMP SUM
END BENT No. 1			34.4		5,356		12	660		365		
END BENT No. 2			34.4		5,356		12	660		355		
TOTAL	6,890	8,131	68.8	LUMP SUM	10,712	276,000	24	1,320	279.79	720	LUMP SUM	LUMP SUM

PROJECT NO. R-2417BB
LEE COUNTY

STATION: 565+49.40 -L-
= 29+46.21 -Y3-

SHEET 3 OF 3

STATE OF NORTH CAROLINA
 DEPARTMENT OF TRANSPORTATION
 RALEIGH

GENERAL DRAWING

LEFT LANE BRIDGE
 OVER NC 42 ON
 US 421/NC 87 SANFORD BYPASS
 BETWEEN SR 1524 AND US 421



REVISIONS						SHEET NO.
NO.	BY:	DATE:	NO.	BY:	DATE:	S-35
1			3			TOTAL SHEETS
2			4			78

DRAWN BY: MIKE BRITT DATE: 8-23-04
 CHECKED BY: P.C. BREWER DATE: 8-24-04