

**NOTES**

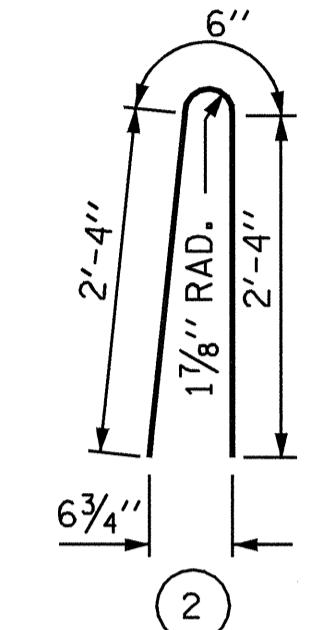
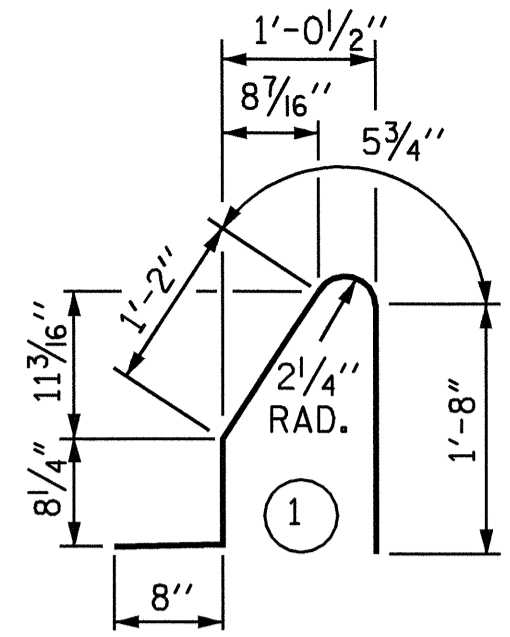
THE BARRIER RAIL SHALL NOT BE CAST UNTIL ALL SLAB CONCRETE HAS BEEN CAST AND HAS REACHED A MINIMUM COMPRESSIVE STRENGTH OF 3,000 PSI.

ALL REINFORCING STEEL IN BARRIER RAILS SHALL BE EPOXY COATED.

VERTICAL GROOVED CONTRACTION JOINTS, 1/2" IN DEPTH, SHALL BE TOOLED IN ALL EXPOSED FACES OF THE BARRIER RAIL AND IN ACCORDANCE WITH ARTICLE 825-10(B) OF THE STANDARD SPECIFICATIONS. THE CONTRACTION JOINT SHALL BE LOCATED AT EACH THIRD POINT BETWEEN BARRIER RAIL EXPANSION JOINTS. ONLY ONE CONTRACTION JOINT IS REQUIRED AT MIDPOINT OF BARRIER RAIL SEGMENTS LESS THAN 20 FEET IN LENGTH AND NO CONTRACTION JOINTS ARE REQUIRED FOR THOSE SEGMENTS LESS THAN 10 FEET IN LENGTH.

THE #5 "S" BARS SHALL BE SHIFTED SLIGHTLY IN ORDER TO MAINTAIN A 2" MINIMUM CLEARANCE TO THE 1/2" EXPANSION JOINT MATERIAL IN BARRIER RAIL.

**BAR TYPES**



ALL BAR DIMENSIONS ARE OUT TO OUT

**BILL OF MATERIAL**

FOR CONCRETE BARRIER RAIL ONLY

BAR	NO.	SIZE	TYPE	LENGTH	WEIGHT
* S1	280	#5	1	4'-8"	1,363
* S2	280	#5	2	5'-2"	1,509
* B1	70	#5	STR	27'-6"	2008

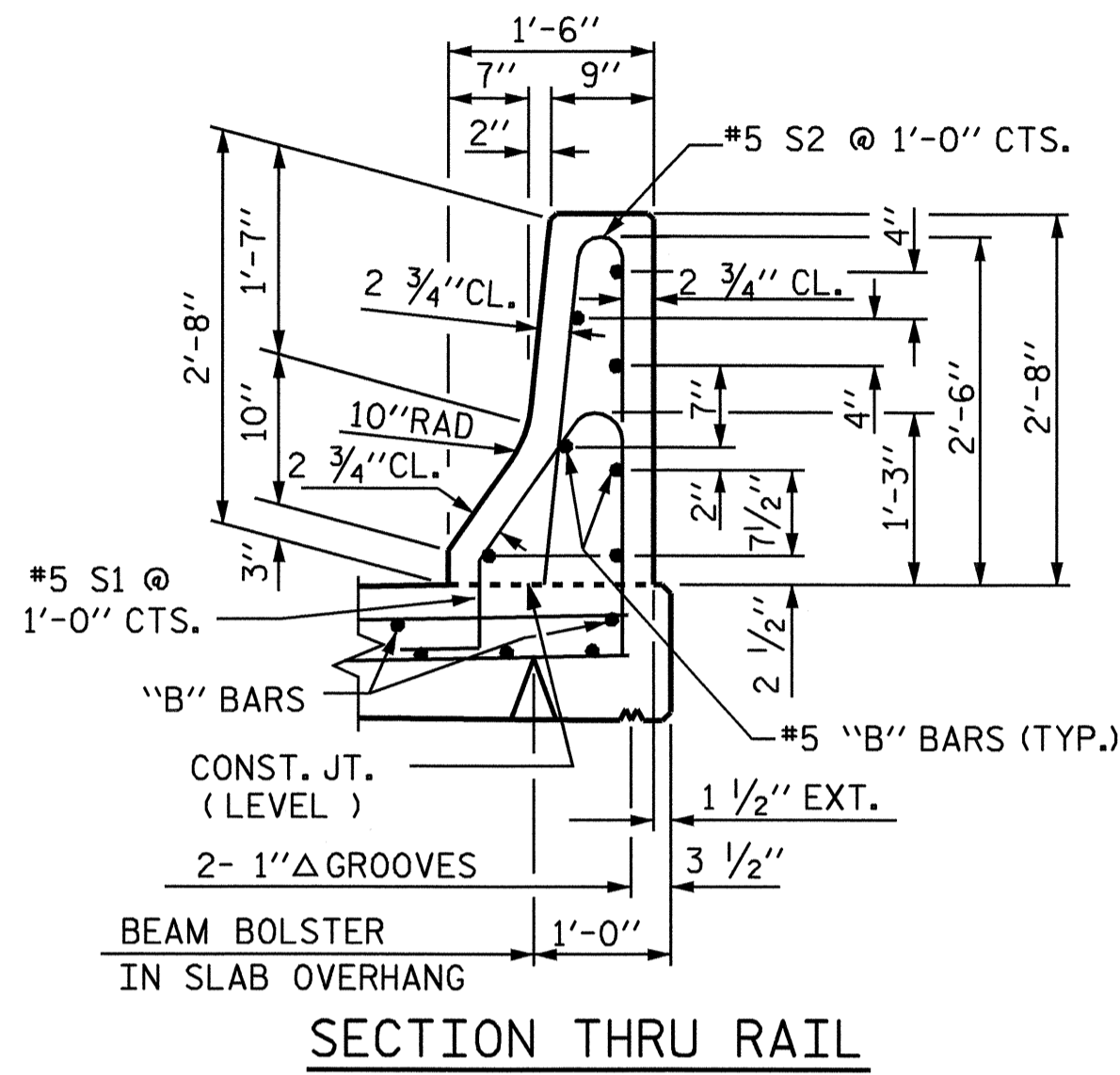
* EPOXY COATED REINFORCING STEEL	4,880 LBS.
CLASS AA CONCRETE	28.0 CU. YDS.
CONCRETE BARRIER RAIL	279.79 LTN. FT.

PROJECT NO. R-2417BB  
LEE COUNTY  
 STATION: 565+49.40 -L-

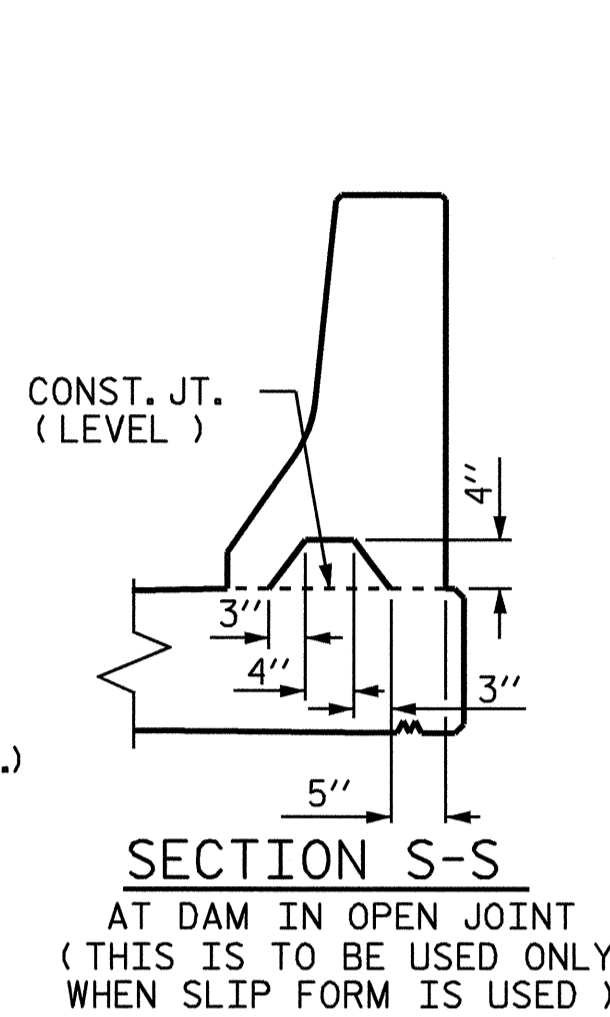
STATE OF NORTH CAROLINA  
 DEPARTMENT OF TRANSPORTATION  
 RALEIGH  
**STANDARD  
 CONCRETE  
 BARRIER RAIL  
 LEFT LANE**

REVISIONS			REVISIONS			SHEET NO.
NO.	BY:	DATE:	NO.	BY:	DATE:	S-44
1			3			TOTAL SHEETS
2			4			78

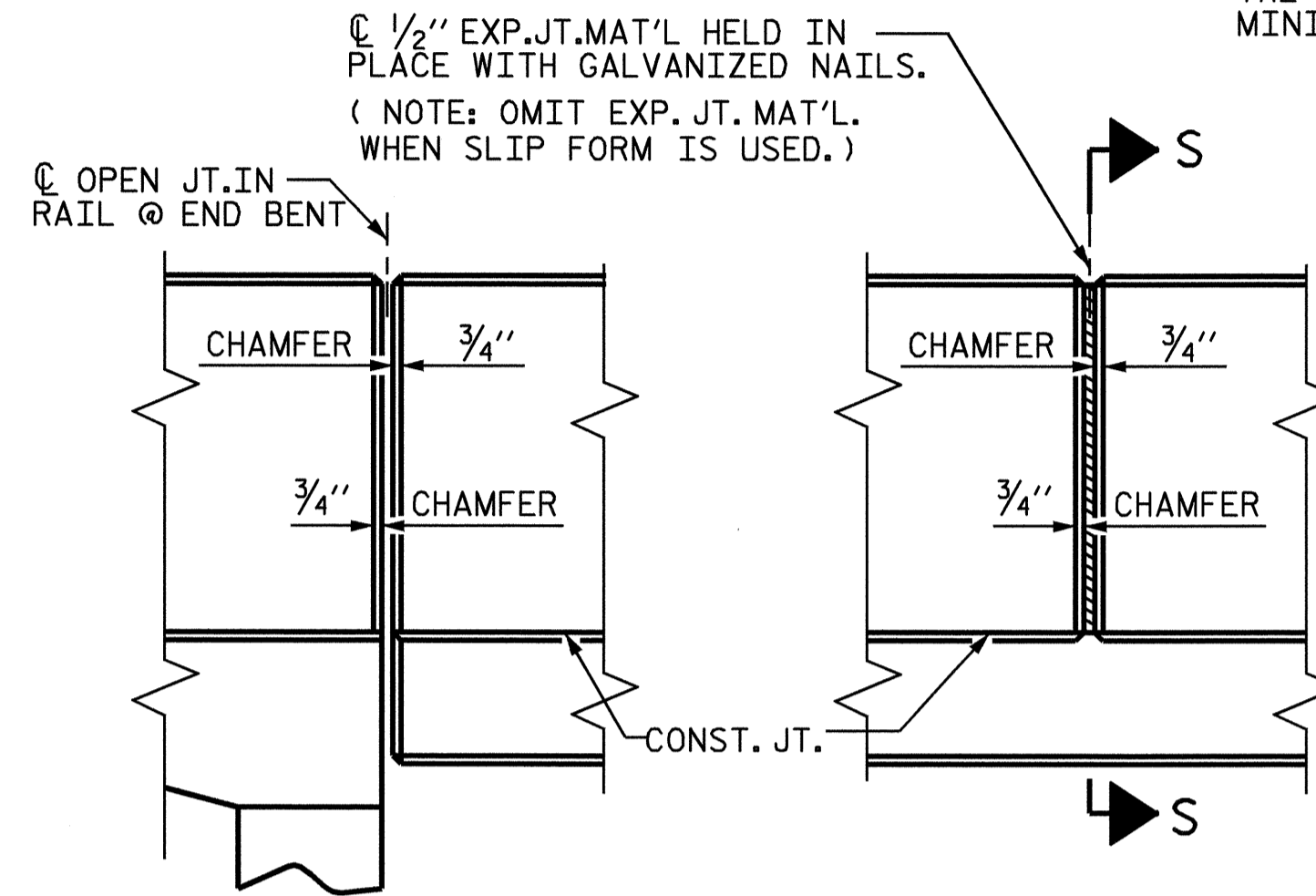
STD. NO. CBRI STR.#2



**SECTION THRU RAIL**

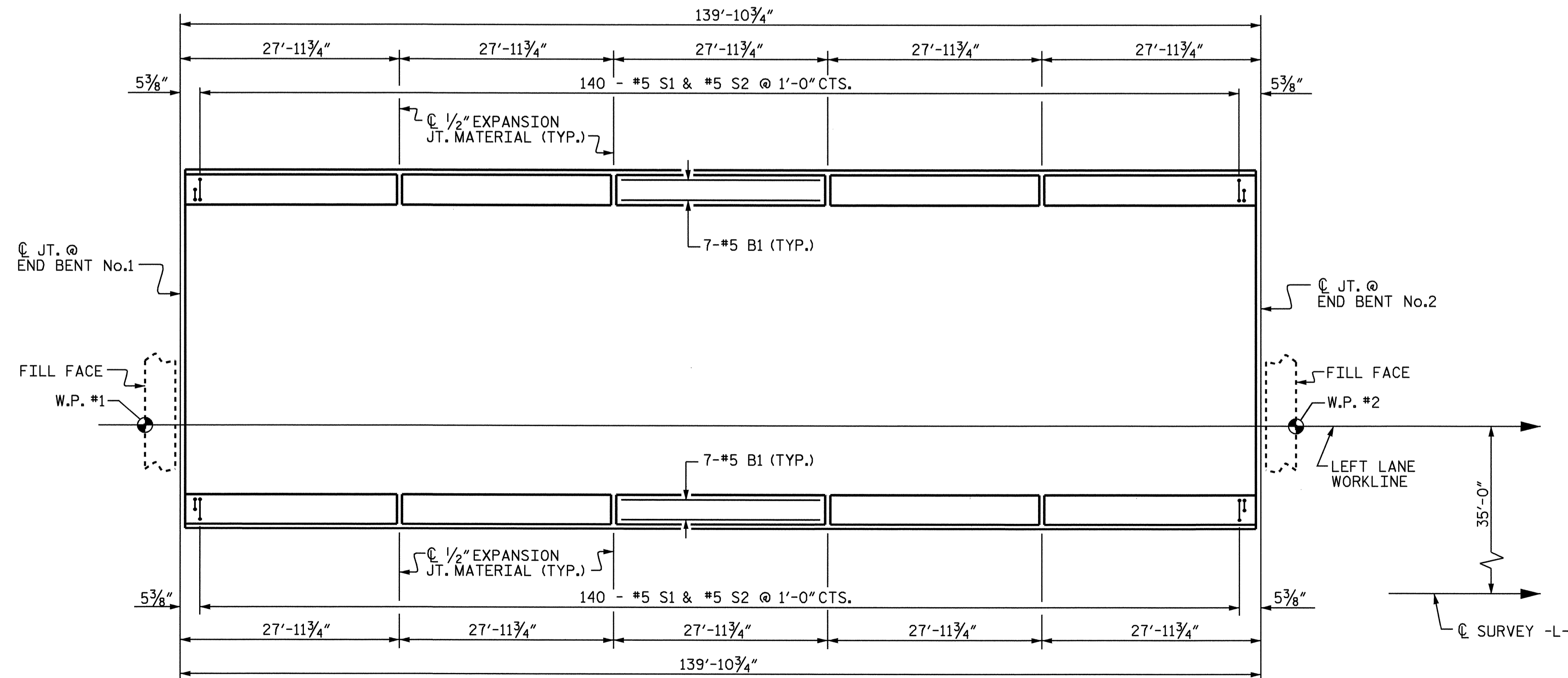


**SECTION S-S  
 AT DAM IN OPEN JOINT  
 (THIS IS TO BE USED ONLY  
 WHEN SLIP FORM IS USED)**



**ELEVATION AT EXPANSION JOINTS**

**BARRIER RAIL DETAILS**



**PLAN OF BARRIER RAIL**

ASSEMBLED BY : A.R.CHESSON	DATE : 4-04
CHECKED BY : B.N.GRADY	DATE : 4-04
DRAWN BY : ARB 5/87	REV. 8/16/99 RWW/LES
CHECKED BY : SJD 9/87	REV. 10/17/00 RWW/LES
	REV. 5/1/03R RWW/JTE

