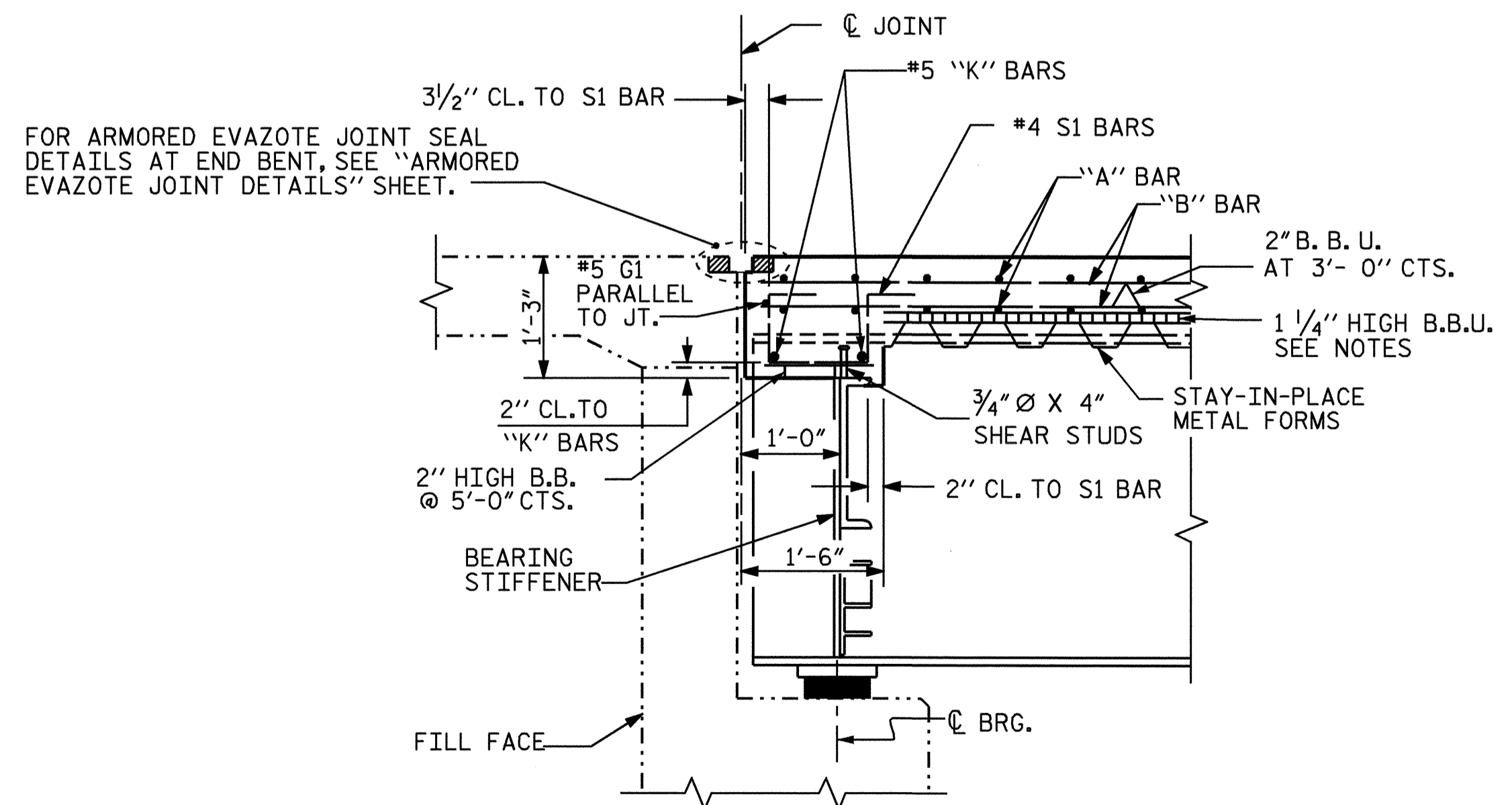


HALF-SECTION SHOWING END BENT DIAPHRAGMS

HALF-SECTION SHOWING INTERMEDIATE DIAPHRAGMS

TYPICAL SECTION



SECTION THRU END BENT DIAPHRAGM

NOTES

PROVIDE 1/4" HIGH BEAM BOLSTERS UPPER AT 4'-0" CTS. ATOP THE METAL STAY-IN-PLACE FORMS TO SUPPORT THE BOTTOM MAT OF 'A' BARS. WHEN USING REMOVABLE FORMS, PROVIDE CONTINUOUS HIGH CHAIRS FOR METAL DECK (C.H.C.M.) @ 4'-0" CTS. WITH A HEIGHT TO SUPPORT THE BOTTOM MAT OF 'A' BARS A CLEAR DISTANCE OF 2 1/2" ABOVE THE TOP OF THE REMOVABLE FORM.

#5 G1 BAR MAY BE SHIFTED SLIGHTLY, AS NECESSARY, TO CLEAR REINFORCING STEEL AND STIRRUPS.

THE CONTRACTOR MAY, WHEN NECESSARY, PROPOSE A SCHEME FOR AVOIDING INTERFERENCE BETWEEN METAL STAY-IN-PLACE FORM SUPPORTS OR FORMS AND GIRDER STIFFENERS OR CONNECTOR PLATES. THE PROPOSAL SHALL BE INDICATED, AS APPROPRIATE, ON EITHER THE STEEL WORKING DRAWINGS OR THE METAL STAY-IN-PLACE FORM WORKING DRAWINGS.

BARRIER RAIL IN SPAN A SHALL NOT BE CAST UNTIL ALL SLAB CONCRETE IN THE SPAN HAS BEEN CAST AND HAS REACHED A MINIMUM COMPRESSIVE STRENGTH OF 3000 PSI.

PROJECT NO. R-2417BB  
LEE COUNTY  
 STATION: 565+49.40 -L-

STATE OF NORTH CAROLINA  
 DEPARTMENT OF TRANSPORTATION  
 RALEIGH  
 SUPERSTRUCTURE  
 TYPICAL SECTION  
 RIGHT LANE



DRAWN BY: A.R.CHESSON DATE: 3-04  
 CHECKED BY: B.N.GRADY DATE: 4-04

| REVISIONS |     |       |     |     |       | SHEET NO.<br>S-59  |
|-----------|-----|-------|-----|-----|-------|--------------------|
| NO.       | BY: | DATE: | NO. | BY: | DATE: |                    |
| 1         |     |       | 3   |     |       | TOTAL SHEETS<br>78 |
| 2         |     |       | 4   |     |       |                    |